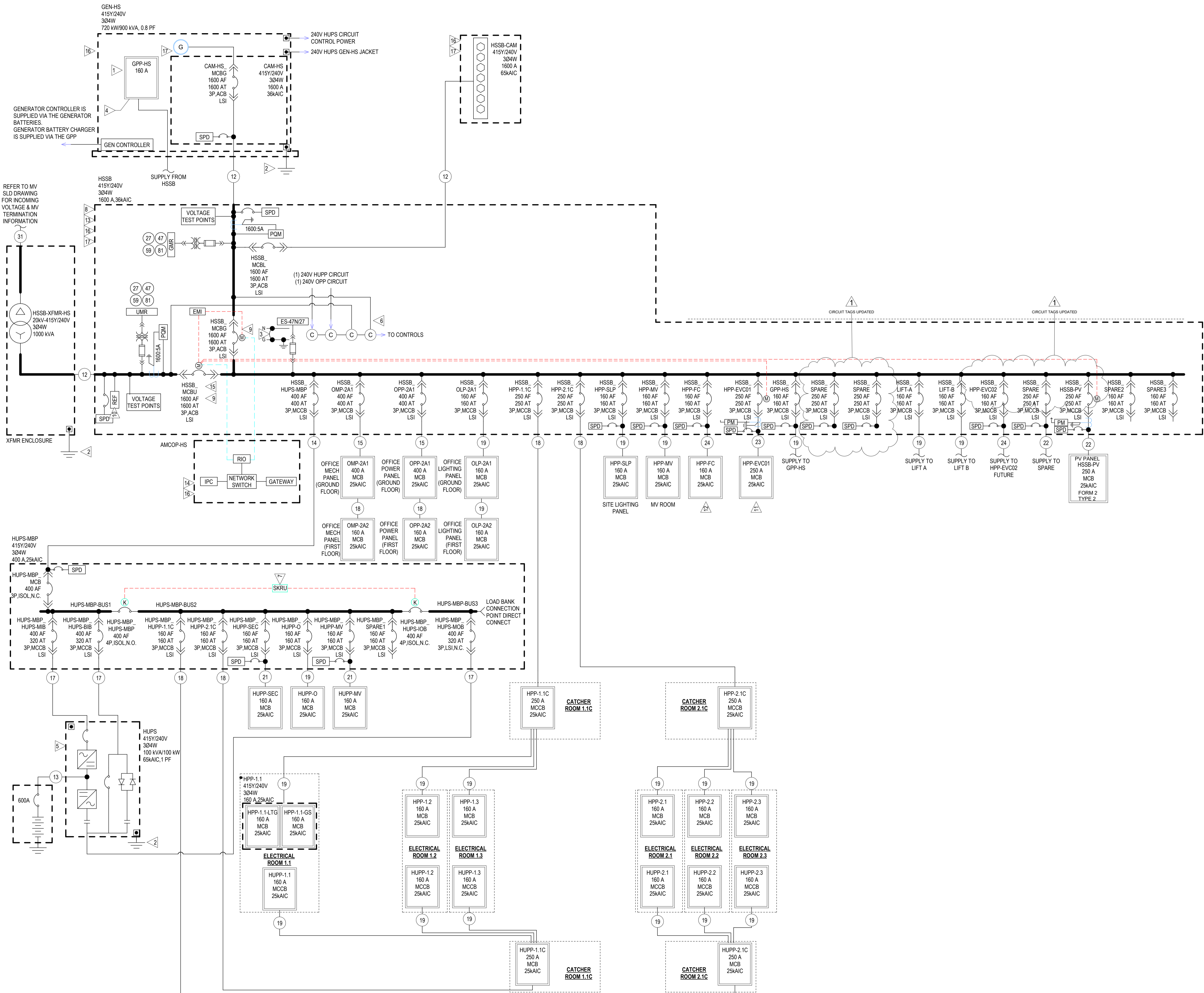


Appendix 03 – 02 Electrical Supply Arrangement

NOTES

GENERAL NOTES

- A. NOT ALL BRANCH FEEDER BREAKERS MAY BE SHOWN. REFER TO PANEL SCHEDULE DRAWINGS FOR ADDITIONAL REQUIREMENTS.
 - B. REFER TO FEEDER/CABLE SCHEDULE DRAWINGS E-9000 SERIES
 - C. THIS DRAWING SHOULD BE READ IN CONJUNCTION WITH EQUIPMENT SPECIFICATIONS, AND E-7500 SERIES DETAIL DRAWINGS.
 - D. PROVIDE FEEDER IDENTIFICATION AS INDICATED ON ELECTRICAL DETAILS SHEET E-8002
 - E. REFER TO EPMS ONE-LINE FOR POM COMMUNICATION DETAILS AND FOR FURTHER INFORMATION ON I/O AND REMOTE I/O'S.
 - F. REFER TO SPECIFICATION 262413.00.MET FOR INTERNAL WIRING CABLE TYPES.
 - G. ALL INTERCONNECT CABLING FROM HSSB TO HSSB-CAM / GEN-HS AND FROM AMCOP TO GEN-HS TO BE EXTERNAL GRADE MULTI CORE LSZI CABLE WITH STEEL WIRE ARMOUR (SWA) 0.6/1kV, CLASS 2 STRANDED COPPER, BLACK OUTER SHEATH
- FLAG NOTES**
- 1. ALL EQUIPMENT AND WIRING INSIDE PACKAGED GENERATOR BY VENDOR. PROVIDE EXTERNAL CONTROL AND POWER CONNECTIONS
 - 2. BOND TO EARTH BAR INDICATED ON ELECTRICAL EARTHING PLANS
 - 3. COMPLETE EARTH SCHEMATIC TO BE FOUND AT E-7500
 - 4. PROVIDE CONNECTION TO GENERATOR MANUFACTURER HOUSE DISTRIBUTION BOARD AS INDICATED
 - 5. UPS SYSTEM SYSTEM POWER WALK-IN: UPON TRANSFER OF LOAD FROM BATTERY SOURCE TO RECTIFIER, THE SYSTEM SHALL GRADUALLY "RAMP" THE LOAD FROM BATTERY SOURCE TO REDUCE THE BLOCK LOADING. TIME TO WALK IN SHALL BE ADJUSTABLE (SET TO 30 SECONDS)
 - 6. PROVIDE CONTROL POWER PER DETAIL 1 ON DRAWING E-7504
 - 7. PROVIDE SOLENOID KEY RELEASE UNIT (SKRU) PER DETAIL 2 ON DRAWING E-7504
 - 8. BREAKERS RATED AT 630A AND ABOVE SHALL BE PROVIDED WITH OPEN / CLOSED / TRIPPED STATUS LAMPS MOUNTED ON THE CUBICLE DOOR.
 - 9. PROVIDE MECHANICAL - ELECTRICAL INTERLOCK CIRCUIT AS PER DRAWING E-7502
 - 10. ELECTRICAL CONTRACTOR TO SUPPLY & INSTALL INTER-TRIP CABLE LINK BETWEEN MDS REF AND MV FEEDER CIRCUIT BREAKER RELAY IN UPSTREAM MV PANEL. REFER TO DRAWING E-7512 FOR DETAILS.
 - 11. HPP-EVC01 MCCBS SHALL BE MOTORISED DEVICES ON RECEIVING AN OPEN / CLOSE SIGNAL FROM MCB. THE EVC MCCB SHALL OPEN/CLOSE REPECTIVELY TO ENSURE NO ELECTRIC VEHICLE CHARGER LOAD IS ON GENERATOR. MANUAL OPEN CLOSE PUSH BUTTONS ASSOCIATED WITH THE MOTORISED FACE PLATE SHALL BE ACCESSIBLE TO THE OPERATOR WITHOUT HAVING TO OPEN THE CUBICLE DOOR AND SHALL BE COVERED WITH GUARDS TO PREVENT ACCIDENTAL OPERATION.
 - 12. HPP-FC IS TO BE SUPPLIED AND INSTALLED BY FUEL COMPOUND VENDOR. APPLICABLE FOR E-7001 ONLY
 - 13. ALL POWER AND CONTROL WIRING BETWEEN AMCOP AND HSSB, HSSB AND GEN-HS, HSSB WILL BE INSTALLED BY THE GENERAL CONTRACTOR
 - 14. FOR AMCOP MK2 INTEGRATION REFER TO DRAWING E-7507
 - 15. PV ARRAY SHALL INTERFACED WITH HSSB_MCBU. WHEN THE HSSB_MCBU IS IN THE OPEN POSITION THE PV ARRAY SHALL BE ISOLATED FROM ELECTRICAL SYSTEM
 - 16. REFER TO DR-E-7507 FOR INTERCONNECT CABLING REQUIREMENTS BETWEEN (i) HOUSE AMCOP AND HSSB AND (ii) HOUSE AMCOP, GEN-HS, HSSB AND HSSB-CAM ALL POWER AND CONTROL WIRING BETWEEN AMCOP WILL BE INSTALLED BY THE GENERAL CONTRACTOR. THE GENERATOR START SIGNAL CABLE FROM AMCOP TO GEN-HS WILL BE WIRED THROUGH THE HSSB-CAM X01 TERMINAL BLOCK USING 1NO CPR COMPLIANT MULTICORE CIRCUIT.
 - 17. 4 NO. CPR COMPLIANT CIRCUITS (1no. MULTICORE) INSTALLED BY THE FOR CAM-HS_MCB'S REMOTE INDICATION AND CONTROL BETWEEN GEN-HS AND THE HSSB
 - 1. TRIP STATUS INDICATION FROM HSSB GEN-HS TO HSSB
 - 2. ON STATUS FROM GEN-HS TO HSSB
 - 3. ON STATUS INDICATION FROM GEN-HS TO HSSB
 - 4. CAM-HS_MCBG SHUNT COMMAND FROM HSSB SELECTOR TO GEN-HS



REV	DATE	DESCRIPTION	DRN	ENG	CHK	APP
0	20 SEP 2024	CONSTRUCTION DOCUMENTS	DDR	DG	DC	RP
1	11 OCT 2024	EVC GSLTG & SLD UPDATES	DOR	DG	DC	RP

ANY UNAUTHORIZED USE OR REPRODUCTION OF THIS DOCUMENT IN WHOLE OR IN PART IS PROHIBITED. DELETE THIS DOCUMENT IF YOU HAVE RECEIVED IT IN ERROR

MECHANICAL ENGINEER:	ELECTRICAL ENGINEER:
ADSL DAVID STIPIC +353864818272 ONE BURLINGTON PLAZA, BURLINGTON ROAD DUBLIN 4	ADSL DARREN GAFFNEY +353864818272 ONE BURLINGTON PLAZA, BURLINGTON ROAD DUBLIN 4
CIVIL ENGINEER:	STRUCTURAL ENGINEER:
ARUP STUART JORDAN +442077552139 8 FITZROY ST, LONDON W1T 4BJ	ARUP EDWARD HOARE +442077558088 8 FITZROY ST, LONDON W1T 4BJ
ARCHITECT:	OTHER CONSULTANT:
ARUP MARCO MUGNAI +442077552139 8 FITZROY ST, LONDON W1T 4BJ	

PROJECT:
TITLE:
POWER ONE-LINE HOUSE LINE UP

PAPER SIZE: ISO A1	SCALE: NTS	AGILE NO: 800-056140-001	REV: 1
-----------------------	---------------	-----------------------------	-----------