







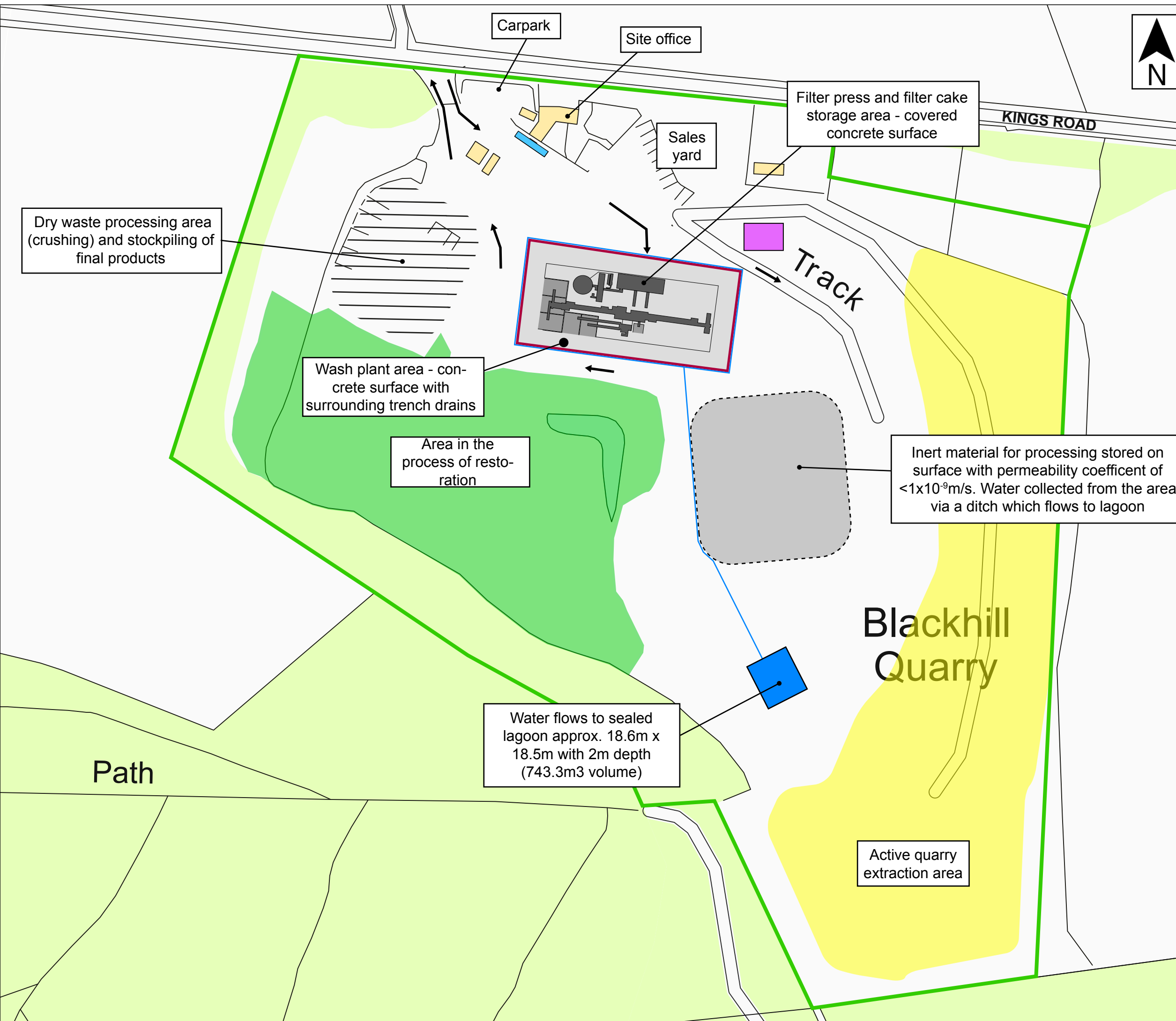


**Drawing Title:**  
Site Master Plan



Key:

-  Permit boundary
-  Extent of concrete pad
-  Direction of traffic on site
-  Incoming waste materials stockpiling area for wash plant only
-  Wash plant final product bays
-  Wheelwash and weighbridge
-  Trench drains
-  Quarantine area



Dry waste processing area (crushing) and stockpiling of final products

Wash plant area - concrete surface with surrounding trench drains

Area in the process of restoration

Inert material for processing stored on surface with permeability coefficient of  $<1 \times 10^{-9} \text{m/s}$ . Water collected from the area via a ditch which flows to lagoon

Water flows to sealed lagoon approx. 18.6m x 18.5m with 2m depth (743.3m<sup>3</sup> volume)

**Blackhill Quarry**

Active quarry extraction area

Notes:  
OS basemap reproduced under licence 100002120.  
Drainage feature location represented schematically - actual locations may vary.

Drawn by:	SP / MS
Checked by:	MS
Approved by:	JMS

**The Mineral Planning Group Ltd.**  
The Rowan Suite  
Oakdene House  
Cottlingley Business Park  
Bingley, West Yorkshire  
BD16 1PE  
Tel: 01274 884599  
headoffice@mpgyorks.co.uk  
www.mpgyorks.co.uk



Scale:  
1:1500 @ A3

Client:  
Mone Brothers Ltd.

Site:  
Blackhill Quarry

Drawing Number: 383/1 - Master Plan-1	Rev: 5.0
--	-------------

Date:  
06/12/2022