

Dust Action Plan

Blackhill Quarry Site **Kings Road** **Bramhope** **Leeds** **LS16 8BG**

Contract Name:	Blackhill Quarry Site
Contract Address:	Kings Road Bramhope Leeds
Postcode:	LS16 8BG
Author:	Denis Greene
Checked:	Denis Greene
Issue Date:	07/12/2022
Revision	1

Site Name:

Blackhill Quarry, Kings Road, Bramhope,
Leeds, LS16 8BG

Ref No:

- Rev 1

TABLE OF CONTENTS

Reference Number	Content Detail	Page Number
Cover Sheet		1
Table of Contents		2
Revision Sheet		3
1.0	Introduction	4
2.0	Project Details	4
2.1	Location	4
2.2	Scope of Document	5
2.3	Details of Project Team	5
2.4	Programme	5
3.0	Site Operation	6
3.1	Site Operation Flow Chart	6
3.2	Sources of Dust	7
3.3	Control of Dust	9
4.0	Monitoring of Dust & Corrective Actions	10
4.1	Description	10
4.2	Visual Dust Monitoring Locations	10
4.3	Corrective Actions	11
	Briefing Sheet	12
Appendix 1	Environmental Check List	13
Appendix 2	Dust Environmental Monitoring Log	15
Appendix 3	Corrective Action Log	17

Site Name:

Blackhill Quarry, Kings Road, Bramhope,
Leeds, LS16 8BG

Ref No:

- Rev 1

Dust Action Plan - Manual Revision Sheet

Revision Number	Date of Issue	Reason for Revision and Comments	Signature
1	07/12/22	Updated to reflect the addition of a Soil Washing Plant to process Highways Specification Materials ie Class 1 & Class 2	<i>PG</i>

Site Name:

Blackhill Quarry, Kings Road, Bramhope,
Leeds, LS16 8BG

Ref No:

- Rev 1

1 Introduction

The Dust Action Plan relates to the Waste Recycling undertaken at the Mone Brothers Excavations Limited site at Blackhill Quarry. The site is controlled by the following Permits: -

- The Environmental Permitting (England and Wales) Regulations 2016, Environmental Permit, Mone Brothers Excavations Limited, Reference No. B0056 issued by Leeds City Council for the operation of crushers and screeners on 30th April 2021.
- The Environmental Permitting (England and Wales) Regulations 2016, Environmental Permit, Mone Brothers Excavations Limited, Reference No. EPR/NB3135RJ/V003 issued by the Environment Agency on 22nd February 2014.
- The Environment Act 1995, Water Resources Act 1991 as amended by the Water Act 2003, The Water Resources (Transitional Provisions) Regulations 2017 – Full License to Abstract Water, License Serial No. NE/027/0020/029 dated 26th March 2021.
- Leeds City Council Planning Consent, Ref 17/02112/FU dated 15th December 2017.
- Leeds City Council Planning Consent, Ref 19/06854/CON dated 23rd December 2019.

In summary the Works at the Blackhill Site Site comprise: -

- Access to the site from Kings Road.
- Traverse along concrete hardstanding road to weighbridge
- Traverse along concrete road into the processing area of the quarry/recycling area and tip inert wastes or deliveries of aggregates and sands or collect primary/secondary aggregates
- Excavate for primary aggregates and transport to processing area
- At the processing area Screen and Crush the materials to produce primary aggregates and secondary aggregate in line with the WRAP Protocol
- At the washing plant processing area, engineering materials will be screened and washed to produce both primary and secondary aggregates of sands, single sized aggregates and engineering clay bound materials in line with the Specification for Highway Works.
- Stockpile aggregates, primary aggregates, secondary aggregates, imported aggregates for re-sale and fines
- Load lorries and transport to weighbridge
- Egress from site via Kings Road

The site is being operated by Mone Brothers Excavations Limited (MBEL) who are acting as the Producer.

2 Project Details

2.1 Location

The site is located 6 miles north of Leeds City Centre and immediately off A660 - Otley Road heading onto Kings Road, Bramhope it is 0.5 mile from Golden Acre Park.

Site Name:

Blackhill Quarry, Kings Road, Bramhope,
Leeds, LS16 8BG

Ref No:

- Rev 1

2.2 Scope of Document

To provide a document which defines the assessment and control of noise at Blackhill, taking into account the requirement for noise minimisation in Condition 17 & 18 of Planning Consent 17/02112/FU.

2.3 Details of the Project Team

Site Operator	Mone Bros Civil Engineering Limited
Address:	Albert Road Morley Leeds LS27 8RU
Tel:	0113 252 3636
Contacts:	Michael Coleman – Managing Director Steve Horsley – Operations Director
E-mail:	Michael.coleman@monebros.co.uk Steve.horsley@monebros.co.uk
Tel:	0113 2523636 – Head Office, Morley 07826 865514 - Michael Coleman 07850 922007 – Steve Horsley
Responsibility for Site Operation	Steve Horsley – Operations Director Kevin Mone – Director Craig Morrell – Site Manager
E-mail:	Steve.horsley@monebros.co.uk kevin.mone@monebros.co.uk craig.morrell@monebros.co.uk
Tel:	0113 267 4386 – Site Landline Number 0113 2523636 – Main Offices Landline Number 07850 922007 – Steve Horsley 07712 597654 – Kevin Mone 07966 612322 – Craig Morrell
Qualifications	WAMITAB for operation management

2.4 Programme

Construction Start Date	N/A
Construction Programme:	Ongoing
Expected Completion Date:	Ongoing

Site Name:

Blackhill Quarry, Kings Road, Bramhope,
Leeds, LS16 8BG

Ref No:

- Rev 1

3 Site Operation

3.1 A Flow Chart is provided in Figure 1 below which summarises potential dust generation activities:

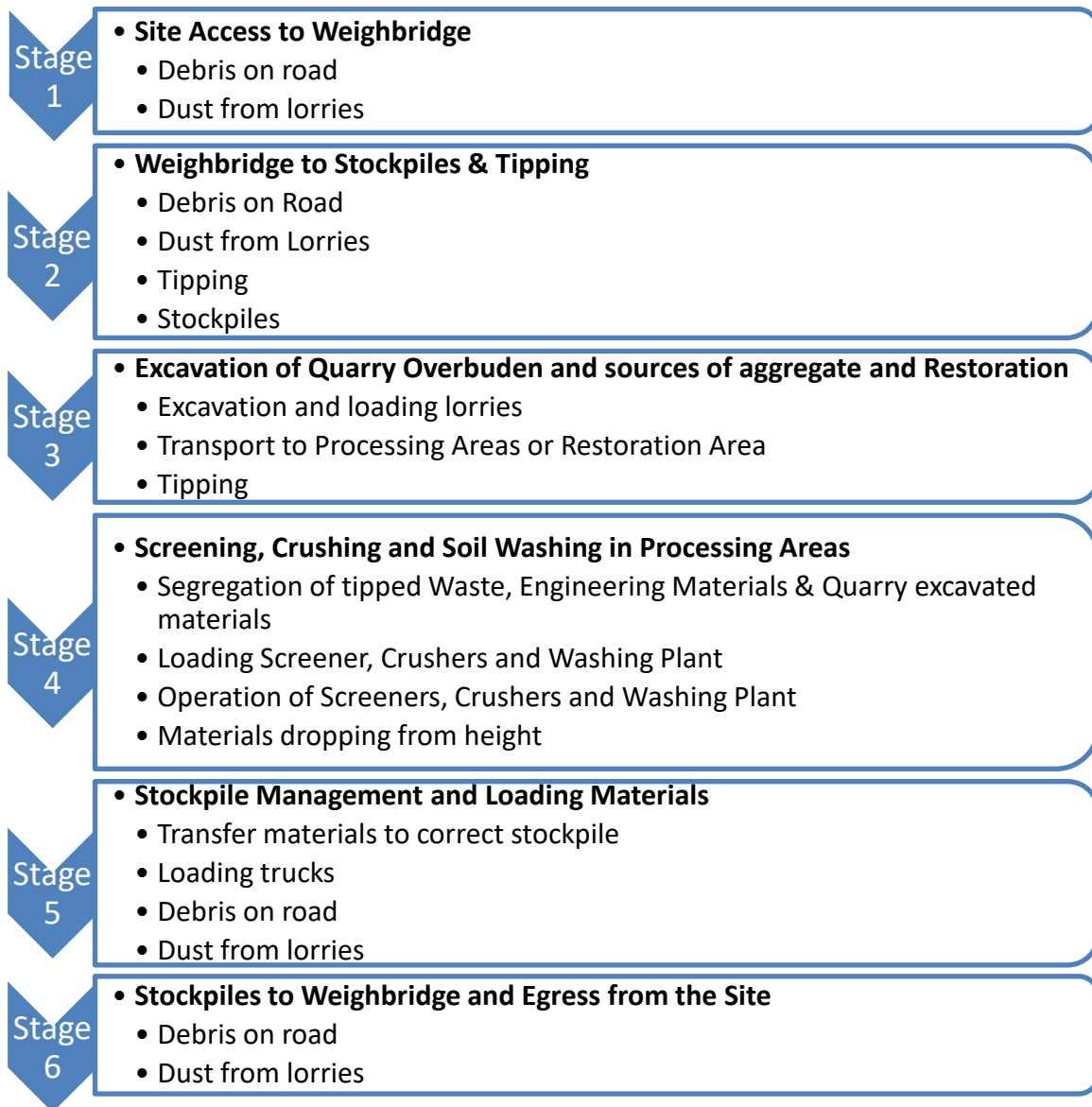


Figure 1 - Flow Chart of Site Operations with Dust Generation

Site Name:

 Blackhill Quarry, Kings Road, Bramhope,
 Leeds, LS16 8BG

Ref No:

- Rev 1

3.2 Sources of Dust: -

There is minimal risk of dust to off-site receptors due to the configuration of the site and distance from sensitive receptors. The following table provides the sources of noise and control regimes.

Source of Dust	Operating Control Measures	Inspection Regime	Corrective Action Plan
Debris on Road on to site and to weighbridge	Direct access off Kings Road onto concrete hardstanding access road. Minimal requirement for maintenance, but road sweeping as required to keep the area clean	Visual inspection.	As required road sweeping and/or scraping road with excavator/front loading shovel
Dust from within delivery materials	Sheeting to be used where available/practicable, to be kept in place until tipping and regular inspection	Visual inspection.	N/A
Lorries Tipping	Only materials as detailed in site permit/planning are to be imported and no materials that are substantially dust.	During booking-in of materials and/or at weighbridge. Visual inspection.	Regular visual inspection & reject unsuitable loads
	Tipping at ground level only, to limit drop height.	Visual inspection.	Maintain working area
	Maintenance of working area to keep tipping areas clean & tidy	Visual inspection.	Maintain working area and water suppression as required.
Stockpiles	Regularly maintained and profiled. Conditioned with water as required.	Management of tipping areas. Visual inspection.	Condition area with water. Reprofile stockpiles.
Excavation	Materials are excavated from the ground in a timely manner. Materials are placed into stockpiles or dumptrucks by excavator bucket with minimal drop height and in a manner to meet the capacity of the crushers/screeners/washing plant.	Visual inspection.	Water suppression applied to input stockpiles as required
Loading Crushers/Screeners & Washing Plant	Materials are excavated from the feed stockpile in a controlled manner. Materials are placed into hopper by excavator/front loader bucket with minimal drop height and in a manner to meet the capacity of the	Visual inspection.	Water suppression applied to input stockpiles as required

Site Name:

Blackhill Quarry, Kings Road, Bramhope,
Leeds, LS16 8BG

Ref No:

- Rev 1

Source of Dust	Operating Control Measures	Inspection Regime	Corrective Action Plan
	crushers/screeners and washing plant.		
Operation of Crushers	The crushers will be operated with the water suppression system and/or water spray turned on where there is potential for dust.	Visual inspection.	Apply water suppression to the area as required.
	The discharge belt is to be kept low to minimize dust generation from materials dropping from height.	Visual inspection.	Apply water suppression to the stockpile as required.
Operation of Screeners	The screeners will by their operation drop the finer materials down to the lower decks.	Visual inspection	Apply water suppression to the area as required.
	The discharge belt of fines is to be kept low to minimize dust generation from materials dropping from height.	Visual inspection.	Apply water suppression to the stockpile as required.
Operation of Washing Plant	The washing plant has a front-end screeners which will by their operation drop the finer materials down to the lower decks. The system involves washing with water which will minimize/eliminate dust	Visual inspection	Apply additional water suppression to the area as required.
	The discharge belts at the end of each process after pre-screening will involve wet materials. The final discharge points will be kept low to minimize dust generation from wet materials dropping from height and into U-shaped concrete bays which again will contain the potential for dust generation and keep the materials wet.	Visual inspection.	Apply water suppression to the stockpile as required.
Loading Lorries	Lorries will be loaded either with a Front Loading Shovel or 360° excavator with minimal drop.	Visual inspection.	Apply water suppression to the stockpile being loaded as required.
Weather	During dry and windy periods: - Haul roads to be wetted with water bowser. Haul roads from reception area to be kept clean with road sweeper to load-in/out areas.	Visual inspection.	Haul roads to be wetted with water bowser. Haul roads from reception area to be kept clean with road

Site Name:

Blackhill Quarry, Kings Road, Bramhope,
Leeds, LS16 8BG

Ref No:

- Rev 1

Source of Dust	Operating Control Measures	Inspection Regime	Corrective Action Plan
	Water suppression system operational. Wheel bath to be used by trucks leaving site Stockpiles to be dampened with water.		sweeper to load-in/out areas. Water suppression system operational. Wheel bath to be used by trucks leaving site Stockpiles to be dampened with water.
Debris on Road from loading area to weighbridge and off-site	Road sweeping to keep the area clean Lorries to pass through wheel bath/wash	Visual inspection.	Road sweeping and/or scraping road with excavator/front loading shovel

Table 1 - Sources of Dust and Control Plan

3.3 Control of Dust: -

The following equipment will be used: -

Equipment	Description of use
Road Sweeper	Cleaning debris and dust from tarmac or concrete hardstandings within the site and along the site access road – as required on an adhoc basis
Water Bowser	Spray water to dampen hardstandings, site haul routes and stockpiles
Wheel Bath	Lorries to pass through the wheel bath to remove mud and debris prior to leaving the site from the processing area
Crusher c/w with water suppression system	Water suppression points spray water over the crusher, crushers have on board water pumps which can be connected to bowser or pond
Screener	Water mists points spray water over the screener
Front Loading Shovels	Loading wagons and movement of materials to stockpiles
360° excavators	Loading wagons and movement of materials to stockpiles
Lorries	20T capacity tippers to use sheeting cover when carrying loads into and out of the site
Washing Plant	It is a system that utilizes water to wash the soil materials, hence by its nature it eliminates dust as part of its operation

Table 2 - Control of Dust

Site Name:

Blackhill Quarry, Kings Road, Bramhope,
Leeds, LS16 8BG

Ref No:

- Rev 1

4. Monitoring and Corrective Actions

4.1 Monitoring is a constant process undertaken by all personnel as part of their Works, with the Works being continually adjusted to meet the changing environmental conditions. Actual recorded monitoring will be undertaken on site a minimum of 3 times per day as per Appendix 1 & 2 which reports the following: -

- Weather conditions – rainfall, temp, wind
- Site entrance – clean/dirty
- Site processing area – clean/dirty
- Internal haul roads – clean/dirty
- Roadsweeper – not required/required & operational
- Mud on roads Y/N
- Dust emissions
 - 1. Site entrance
 - 2 – 5. Processing Area N, E, S & W
 - 6. Processing Area C – Crushers & Screeners

4.2 The locations for visual dust monitoring are as follows: -

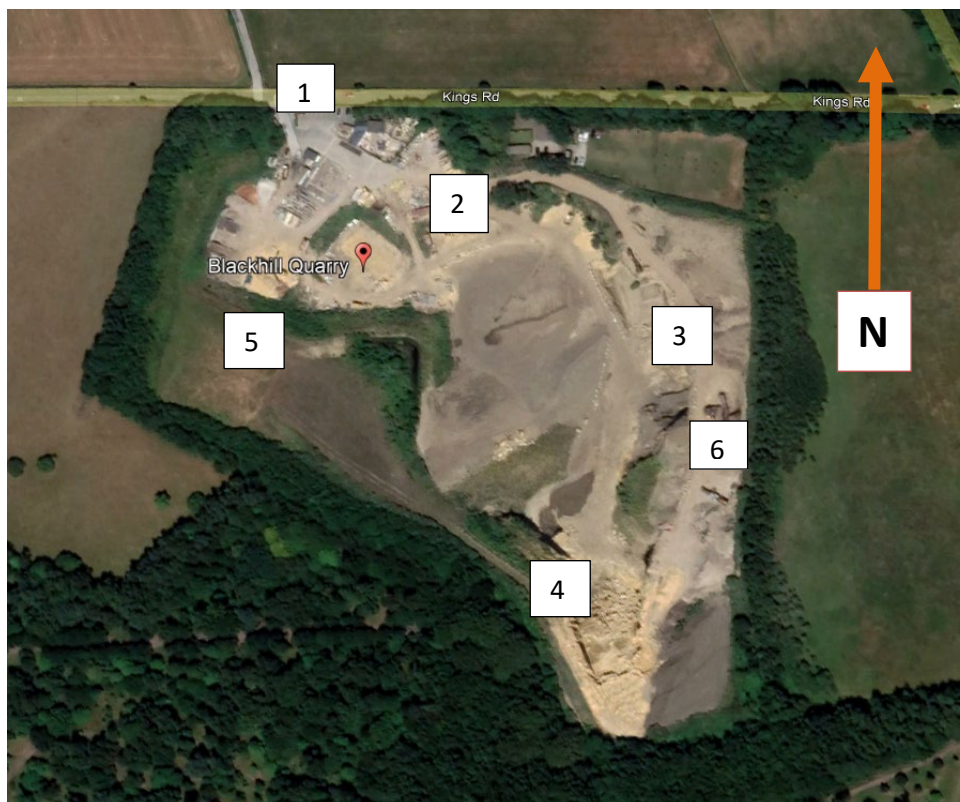


Figure 2 - Blackhill Quarry - Site Layout and Location of Visual Dust Monitoring Points

Site Name:

Blackhill Quarry, Kings Road, Bramhope,
Leeds, LS16 8BG

Ref No:

- Rev 1

- 4.3** Where Corrective Actions are required ie. those which are not part of the daily routine to maintain the site, then these must be put into place immediately and recorded in the Corrective Actions Log in Appendix 3 or the processing works ceased until the Corrective Actions are fully in place and shown to be effective.

Site Name:

Blackhill Quarry, Kings Road, Bramhope,
Leeds, LS16 8BG

Ref No:

- Rev 1

APPENDIX 1

ENVIRONMENTAL SITE CHECK LIST

Site Name:

Blackhill Quarry, Kings Road, Bramhope,
Leeds, LS16 8BG

Ref No:

- Rev 1

**Blackhill Quarry
Environmental Site Check List**

Date:	Day:
Carried out by:	Signed:

Time	07:00						
Weather Conditions							
Site Entrance Condition							
Site Processing Area – Condition							
Internal Haul Routes Condition							
Roadsweeper							
Water Bowser							
Mud on Roads							
Dust Emissions							
Wind Direction							
<u>1 Site Entrance</u>							
<u>2 Processing N</u>							
<u>3 Processing E</u>							
<u>4 Processing S</u>							
<u>5 Processing W</u>							
<u>6 Processing C</u>							
Noise Assessment							
Qualitative Noise Assessment							
Odour Assessment							
Qualitative Odour Assessment							
Notes							

Site Name:

Blackhill Quarry, Kings Road, Bramhope,
Leeds, LS16 8BG

Ref No:

- Rev 1

APPENDIX 2

SPECIFIC DUST EMISSION MONITORING LOG FOR SCREENERS AND CRUSHERS

Site Name:

Blackhill Quarry, Kings Road, Bramhope,
Leeds, LS16 8BG

Ref No:

- Rev 1

Date: _____ **Day:** _____

Time	
Crusher/Screener	
Location	
Weather Conditions	
Visible Dust Emissions	
Duration of Observation	
Observers Name & Signature	
Action Taken	

Time	
Crusher/Screener	
Location	
Weather Conditions	
Visible Dust Emissions	
Duration of Observation	
Observers Name & Signature	
Action Taken	

Time	
Crusher/Screener	
Location	
Weather Conditions	
Visible Dust Emissions	
Duration of Observation	
Observers Name & Signature	
Action Taken	

Site Name:

Blackhill Quarry, Kings Road, Bramhope,
Leeds, LS16 8BG

Ref No:

- Rev 1

APPENDIX 3

CORRECTIVE ACTION LOG

