

A6 Typical details for an *in situ* reinforced concrete wall

For all but the smallest of *in situ* reinforced concrete bund, joints will be required between structural elements to facilitate construction and to allow movement (contraction and expansion of the walls and base). A typical arrangement of joints is shown by Figure A6.1.

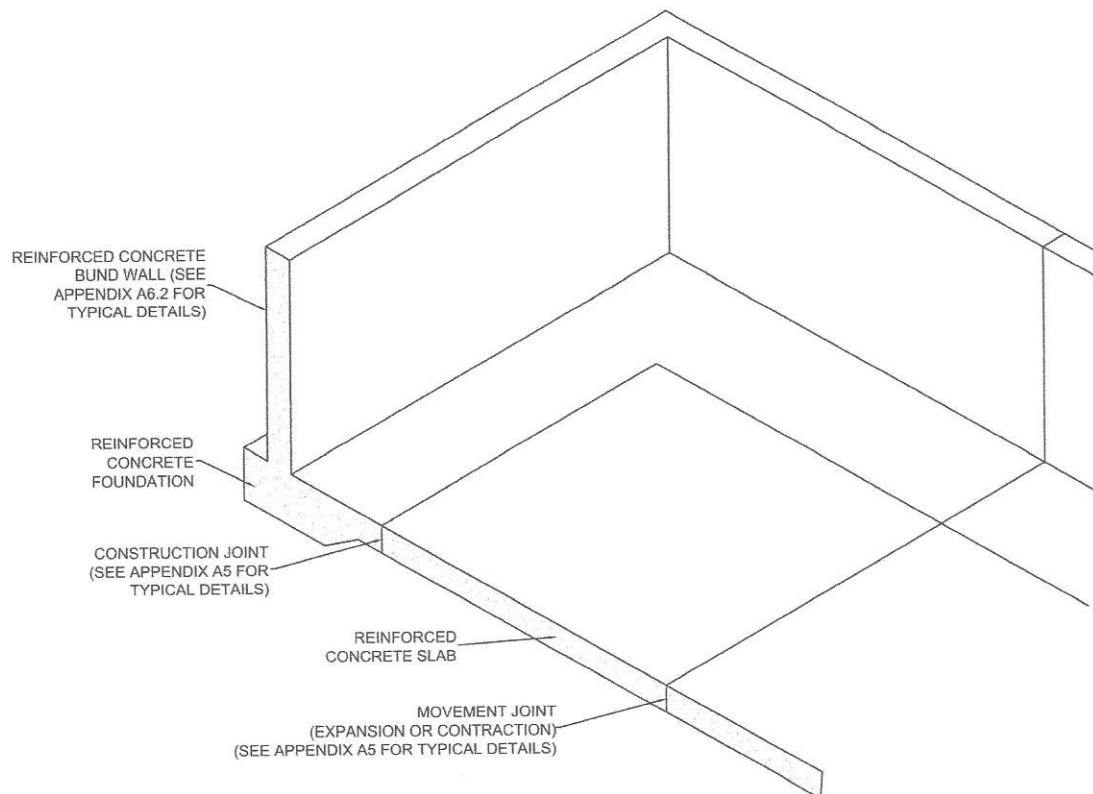


Figure A6.1 Typical arrangement of joints

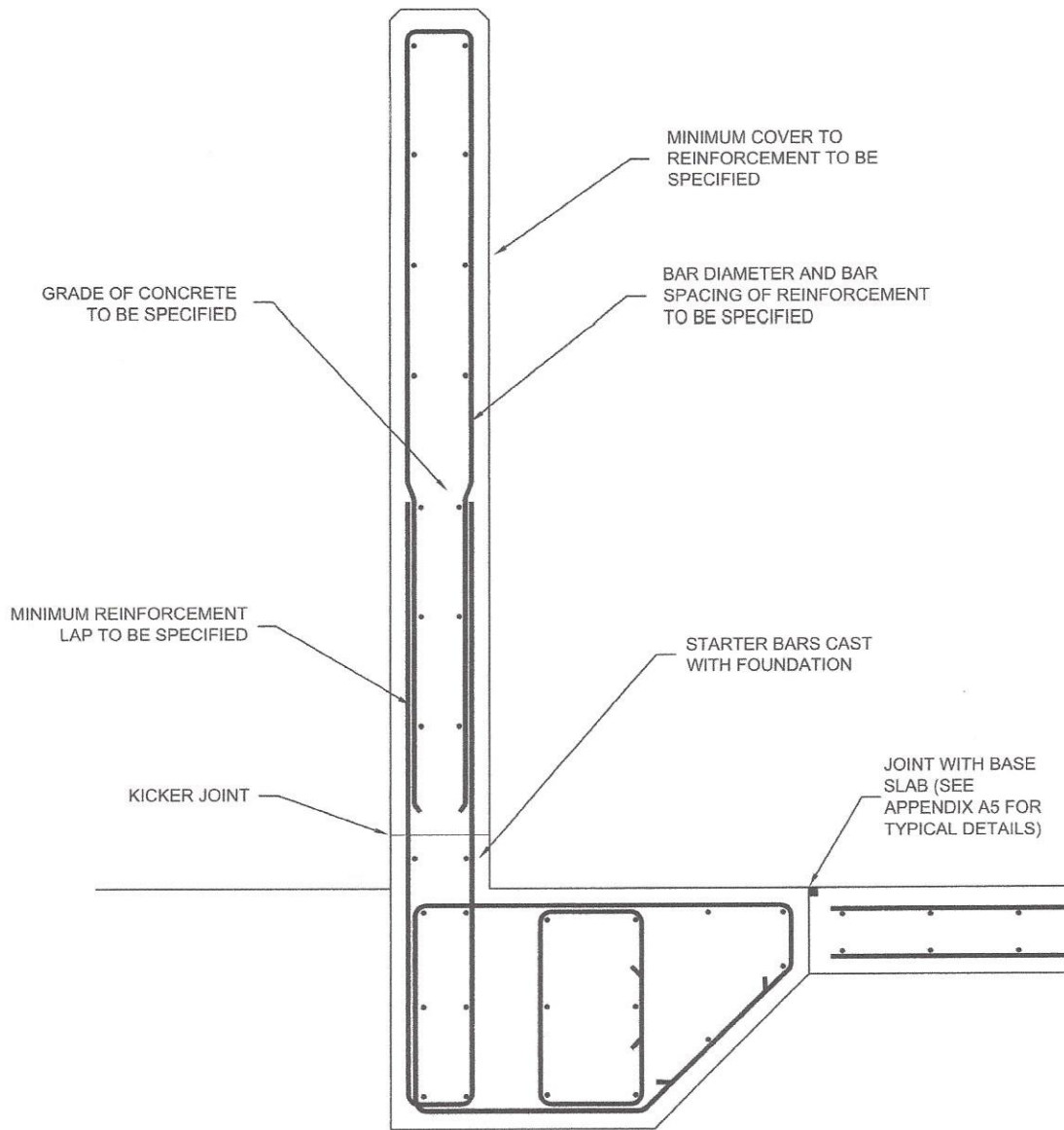


Figure A6.2 Typical in situ reinforced concrete wall detail