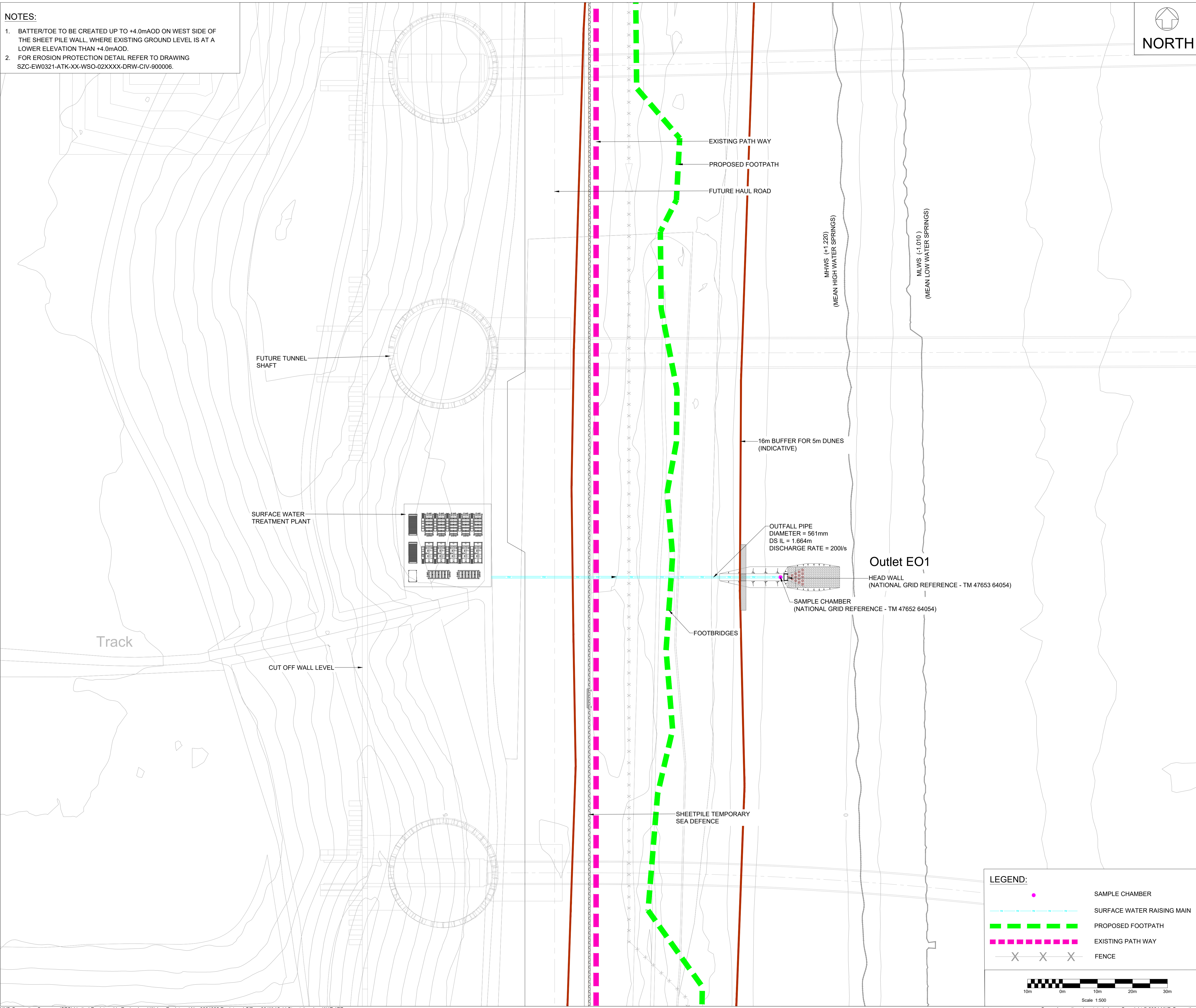


**NOTES:**

- BATTER/TOE TO BE CREATED UP TO +4.0mAOD ON WEST SIDE OF THE SHEET PILE WALL, WHERE EXISTING GROUND LEVEL IS AT A LOWER ELEVATION THAN +4.0mAOD.
- FOR EROSION PROTECTION DETAIL REFER TO DRAWING SZC-EW0321-ATK-XX-WSO-02XXXX-DRW-CIV-900006.



**UK PROTECTIVE MARKING:**  
NOT PROTECTIVELY MARKED

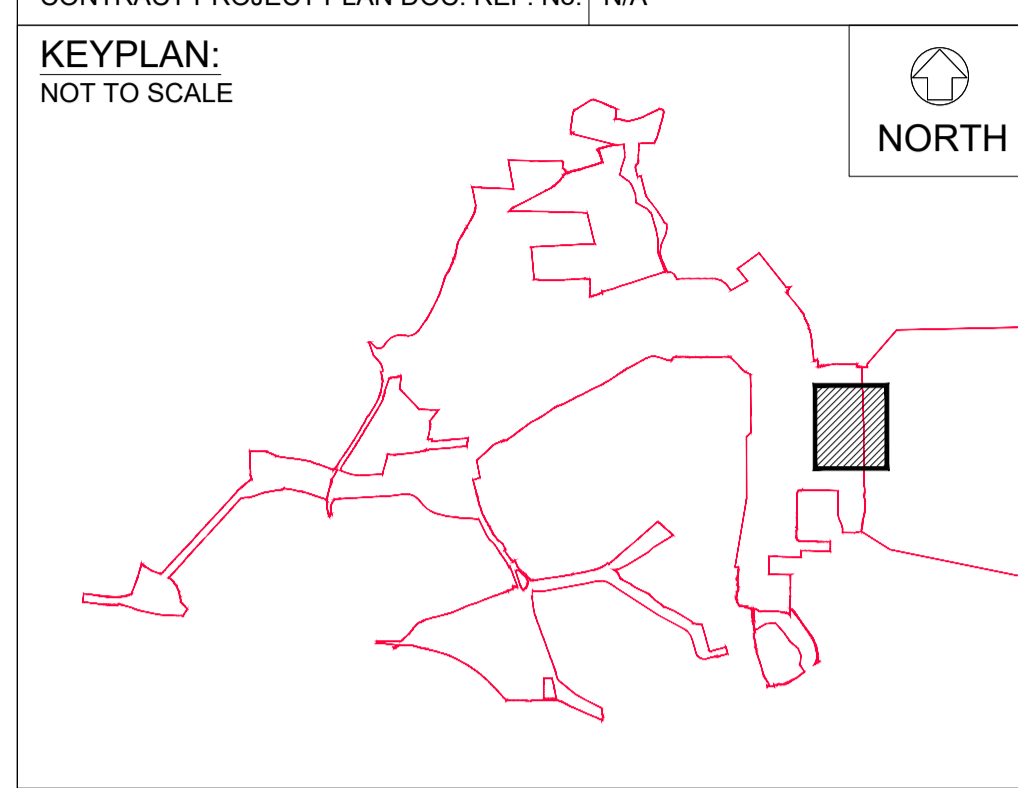
Reproduced from Ordnance Survey map with the permission of Ordnance Survey on behalf of the controller of His Majesty's Stationery Office © Crown copyright (2024). All Rights reserved. NNB GenCo Licence: 0100060408

**DRAWING GRID / COORDINATE SYSTEM:**

SITE LOCAL GRID  NATIONAL GRID OSGB36

OTHER GRID  (To be defined in the contract project plan)

CONTRACT PROJECT PLAN DOC. REF. No: N/A



**SAFETY, HEALTH AND ENVIRONMENTAL INFORMATION**

In addition to the hazards/risks normally associated with the types of work detailed on this drawing, note the following:

- CONSTRUCTION**
- \* CONSTRUCTION WILL TAKE PLACE ON POTENTIALLY UNSTABLE GRANULAR GROUND, HIGH RISK OF TRENCH COLLAPSE AND PLANT GETTING STUCK.
  - \* CONSTRUCTION WILL TAKE PLACE NEXT TO AND ENVIRONMENTALLY SENSITIVE DUNES, VEHICLE MOVEMENTS TO BE KEPT TO A MINIMUM UTILISING A SINGLE TRACK WHERE POSSIBLE.
  - \* CONSTRUCTION WILL TAKE PLACE NEAR TO AND WITHIN THE HIGH TIDE LEVEL, RISK OF DROWNING DURING HIGH TIDE AND STORM SURGE EVENTS.
  - \* RISK OF CONTAMINATION OF BEACH FROM UNTREATED CONTAMINATED SPILL.

- MAINTENANCE/CLEANING**
- \* HIGH VOLUME OF WATER FLOW PIPE DURING MAINTENANCE WITH A RISK OF SUDDEN SURGES PRESENTS A HAZARD DURING MAINTENANCE.
  - \* CONTACT WITH HAZARDOUS FLOWS (E.G. WELL'S DISEASE).
  - \* MAINTENANCE WILL TAKE PLACE NEAR TO AND WITHIN THE HIGH TIDE LEVEL, RISK OF DROWNING DURING HIGH TIDE AND STORM SURGE EVENTS.
  - \* ENSURE PUMP STATION IS OFFLINE DURING MAINTENANCE.

**DECOMMISSIONING/DEMOLITION**

\* SEE CONSTRUCTION AND MAINTENANCE NOTES ABOVE.

The above risks are listed in the Design Risk Register reference SZC-EW0000-ATK-XX-000-XXXXX-REG-CIV-000009

It is assumed that all works will be carried out by a competent contractor working, where appropriate, to an approved method statement

REV.	DATE	PREPARED BY	CHECKED BY	STATUS	REASONS FOR REVISION	APPROVED BY
P01	26/02/24	S.M.	CC	P4	First Revision	SF

CONTRACTOR COMPANY TRADE NAME : AtkinsRéalis

CONTRACTOR REF. No. SZC-EW0921-ATK-XX-WSO-02XXXX-DRW-CIV-900001

CONTRACT NUMBER : Early Works EWXXXX\_098\_01

CONTRACTOR WBS CODE : EW0921

QRA RELATED Yes  No

APPLICABILITY:  
1: Document related to Unit 1  
2: Document related to Unit 2  
9: Document that applies to buildings/systems common to Unit 1 & 2  
0: Documents that relate exclusively to buildings or systems that are common to the whole site (e.g. parking, ancillary buildings...)

NUCL/REP/EPR/UKX			
SZC ( doc: SZ )	0	1	2
	X		

BUILDING N/A

SYSTEM WSO

SCALE 1:500

SIZE A1

PAGE 1/1

TEAMCENTER DOCUMENT REFERENCE No. 101166635

DOCUMENT SUB -TYPE N/A

EDF CLASSIFICATION CODE N/A

SUBCONTRACTOR COMPANY TRADE NAME N/A

SUBCONTRACTOR DOCUMENT REF. No. S213850-SNC-02-XX-DDRW-X-900001

INTELLECTUAL PROPERTY OWNERSHIP: NNB: N/A, EDF: N/A, CONTRACTOR: N/A

UK PROTECTIVE MARKING: NOT PROTECTIVELY MARKED

**LEGEND:**

- SAMPLE CHAMBER
- SURFACE WATER RAISING MAIN
- PROPOSED FOOTPATH
- EXISTING PATH WAY
- FENCE

Scale 1:500