

# Historical Mapping Legends

## Ordnance Survey County Series 1:10,560

	Gravel Pit		Sand Pit		Other Pits
	Quarry		Shingle		Orchard
	Osiers		Reeds		Marsh
	Mixed Wood		Deciduous		Brushwood
	Fir		Furze		Rough Pasture
	Arrow denotes flow of water		Trigonometrical Station		
	Site of Antiquities		Bench Mark		
	Pump, Guide Post, Signal Post		Well, Spring, Boundary Post		
	•285 Surface Level				
	Sketched Contour		Instrumental Contour		
	Main Roads		Minor Roads		
	Sunken Road		Raised Road		
	Road over Railway		Railway over River		
	Railway over Road		Level Crossing		
	Road over River or Canal		Road over Stream		
	Road over Stream				
	County Boundary (Geographical)				
	County & Civil Parish Boundary				
	Administrative County & Civil Parish Boundary				
	County Borough Boundary (England)				
	County Burgh Boundary (Scotland)				
	Rural District Boundary				
	Civil Parish Boundary				

## Ordnance Survey Plan 1:10,000

	Chalk Pit, Clay Pit or Quarry		Gravel Pit
	Sand Pit		Disused Pit or Quarry
	Refuse or Slag Heap		Lake, Loch or Pond
	Dunes		Boulders
	Coniferous Trees		Non-Coniferous Trees
	Orchard		Scrub
	Bracken		Heath
	Marsh		Reeds
	Building		Glasshouse
	Sloping Masonry		Pylon
	Cutting		Embankment
	Road Under		Road Over
	Level Crossing		Foot Bridge
	Standard Gauge Multiple Track		Standard Gauge Single Track
	Siding, Tramway or Mineral Line		Narrow Gauge
	Geographical County		Administrative County, County Borough or County of City
	Municipal Borough, Urban or Rural District, Burgh or District Council		Borough, Burgh or County Constituency
	Civil Parish		
	BP, BS Boundary Post or Stone		Police Station
	Church		Post Office
	Club House		Public Convenience
	Fire Engine Station		Public House
	Foot Bridge		Signal Box
	Fountain		Spring
	Guide Post		Telephone Call Box
	Mile Post		Telephone Call Post
	Mile Stone		Well

## 1:10,000 Raster Mapping

	Gravel Pit		Refuse tip or slag heap
	Rock		Rock (scattered)
	Boulders		Boulders (scattered)
	Shingle		Mud
	Sand		Sand Pit
	Slopes		Top of cliff
	General detail		Underground detail
	Overhead detail		Narrow gauge railway
	Multi-track railway		Single track railway
	County boundary (England only)		Civil, parish or community boundary
	District, Unitary, Metropolitan, London Borough boundary		Constituency boundary
	Area of wooded vegetation		Non-coniferous trees
	Non-coniferous trees (scattered)		Coniferous trees
	Coniferous trees (scattered)		Positioned tree
	Orchard		Coppice or Osiers
	Rough Grassland		Heath
	Scrub		Marsh, Salt Marsh or Reeds
	Water feature		Flow arrows
	Mean high water (springs)		Mean low water (springs)
	Telephone line (where shown)		Electricity transmission line (with poles)
	Bench mark (where shown)		Triangulation station
	Point feature (e.g. Guide Post or Mile Stone)		Pylon, flare stack or lighting tower
	Site of (antiquity)		Glasshouse
	General Building		Important Building

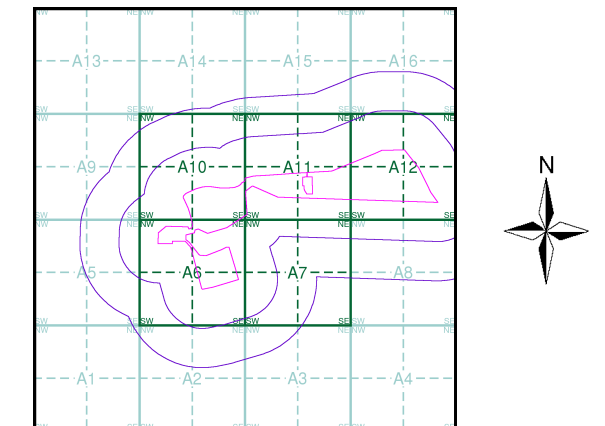
# Envirocheck®

LANDMARK INFORMATION GROUP®

## Historical Mapping & Photography included:

Mapping Type	Scale	Date	Pg
Yorkshire	1:10,560	1855	2
Yorkshire	1:10,560	1892	3
Yorkshire	1:10,560	1910	4
Yorkshire	1:10,560	1928	5
Yorkshire	1:10,560	1951 - 1952	6
Ordnance Survey Plan	1:10,000	1956	7
Ordnance Survey Plan	1:10,000	1978	8
10K Raster Mapping	1:10,000	1999	9
10K Raster Mapping	1:10,000	2006	10
VectorMap Local	1:10,000	2023	11

## Historical Map - Slice A



## Order Details

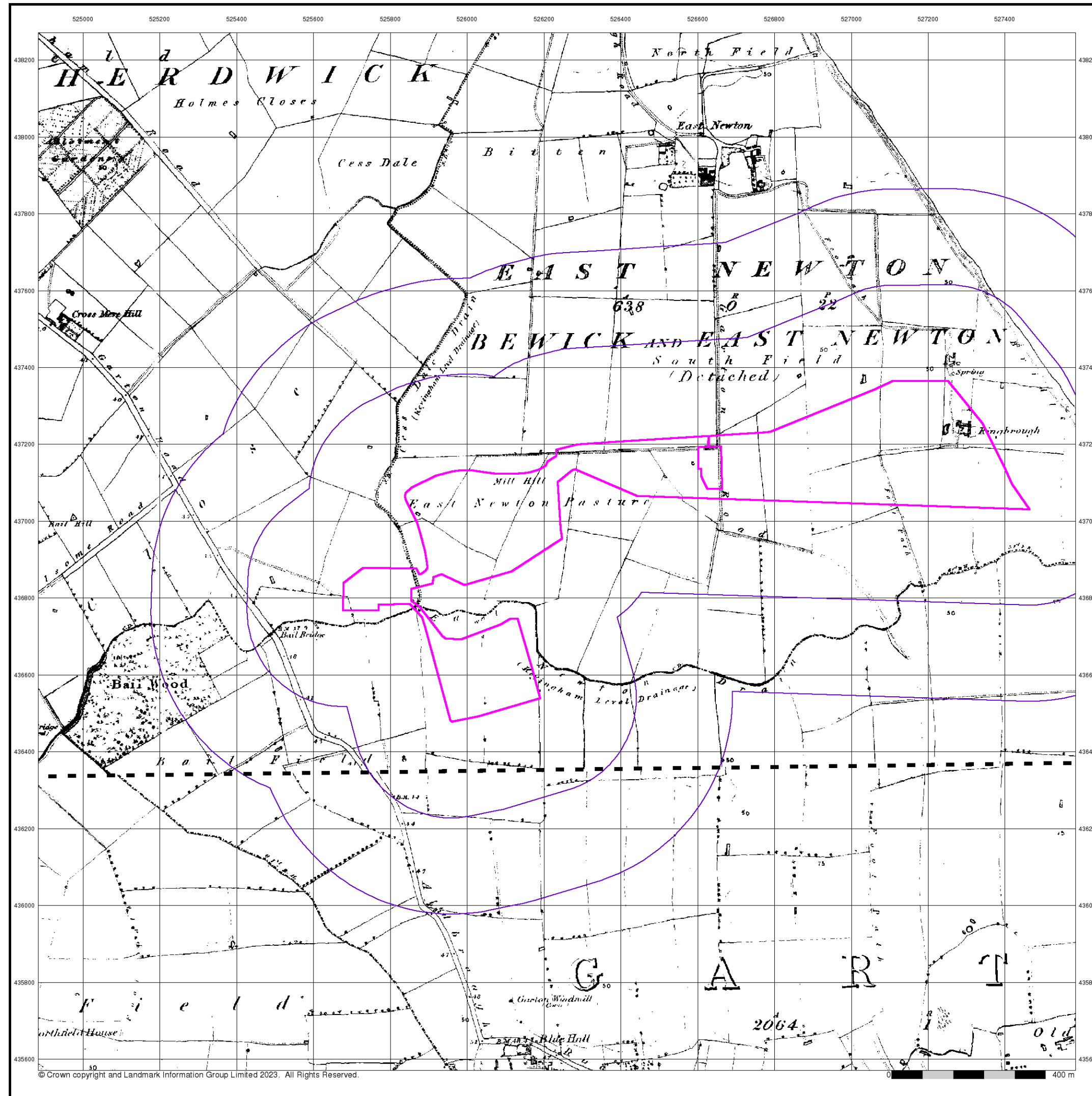
Order Number: 312082408\_1\_1  
Customer Ref: Pathfinder  
National Grid Reference: 526410, 436970  
Slice: A  
Site Area (Ha): 39.95  
Search Buffer (m): 500

## Site Details

Pathfinder

**Landmark®**  
INFORMATION GROUP

Tel: 0844 844 9952  
Fax: 0844 844 9951  
Web: www.envirocheck.co.uk



Yorkshire

Published 1855

Source map scale - 1:10,560

The historical maps shown were reproduced from maps predominantly held at the scale adopted for England, Wales and Scotland in the 1840's. In 1854 the 1:2,500 scale was adopted for mapping urban areas; these maps were used to update the 1:10,560 maps. The published date given therefore is often some years later than the surveyed date. Before 1938, all OS maps were based on the Cassini Projection, with independent surveys of a single county or group of counties, giving rise to significant inaccuracies in outlying areas. In the late 1940's, a Provisional Edition was produced, which updated the 1:10,560 mapping from a number of sources. The maps appear unfinished - with all military camps and other strategic sites removed. These maps were initially overprinted with the National Grid. In 1970, the first 1:10,000 maps were produced using the Transverse Mercator Projection. The revision process continued until recently, with new editions appearing every 10 years or so for urban areas.

Map Name(s) and Date(s)

21300

1855

1:10,560

22800

1855

1:10,560

Historical Map - Slice A

Order Details

Order Number:

312082408\_1\_1

Customer Ref:

Pathfinder

National Grid Reference:

526410, 436970

Slice:

A

Site Area (Ha):

39.95

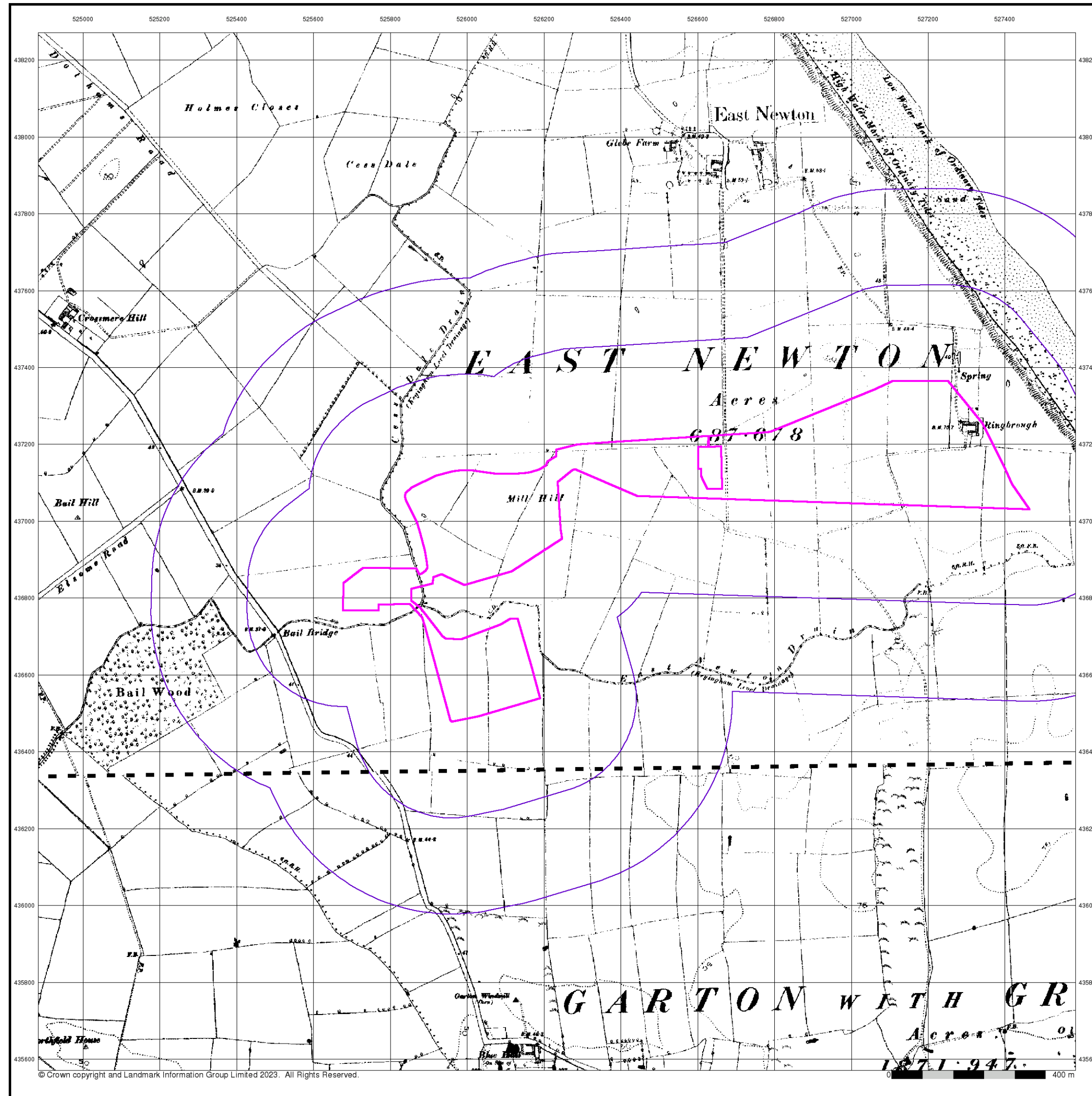
Search Buffer (m):

500

Site Details

Pathfinder





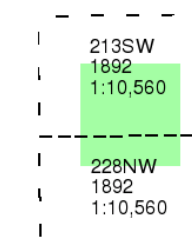
## Yorkshire

Published 1892

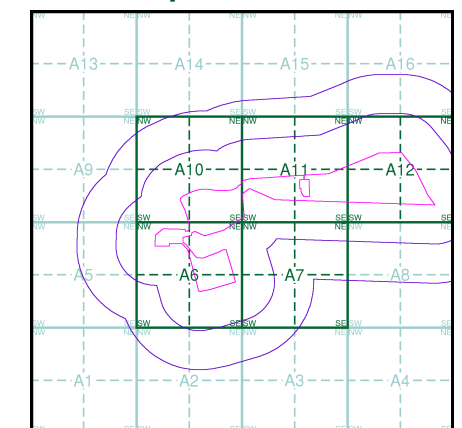
Source map scale - 1:10,560

The historical maps shown were reproduced from maps predominantly held at the scale adopted for England, Wales and Scotland in the 1840's. In 1854 the 1:2,500 scale was adopted for mapping urban areas; these maps were used to update the 1:10,560 maps. The published date given therefore is often some years later than the surveyed date. Before 1938, all OS maps were based on the Cassini Projection, with independent surveys of a single county or group of counties, giving rise to significant inaccuracies in outlying areas. In the late 1940's, a Provisional Edition was produced, which updated the 1:10,560 mapping from a number of sources. The maps appear unfinished - with all military camps and other strategic sites removed. These maps were initially overprinted with the National Grid. In 1970, the first 1:10,000 maps were produced using the Transverse Mercator Projection. The revision process continued until recently, with new editions appearing every 10 years or so for urban areas.

### Map Name(s) and Date(s)



### Historical Map - Slice A

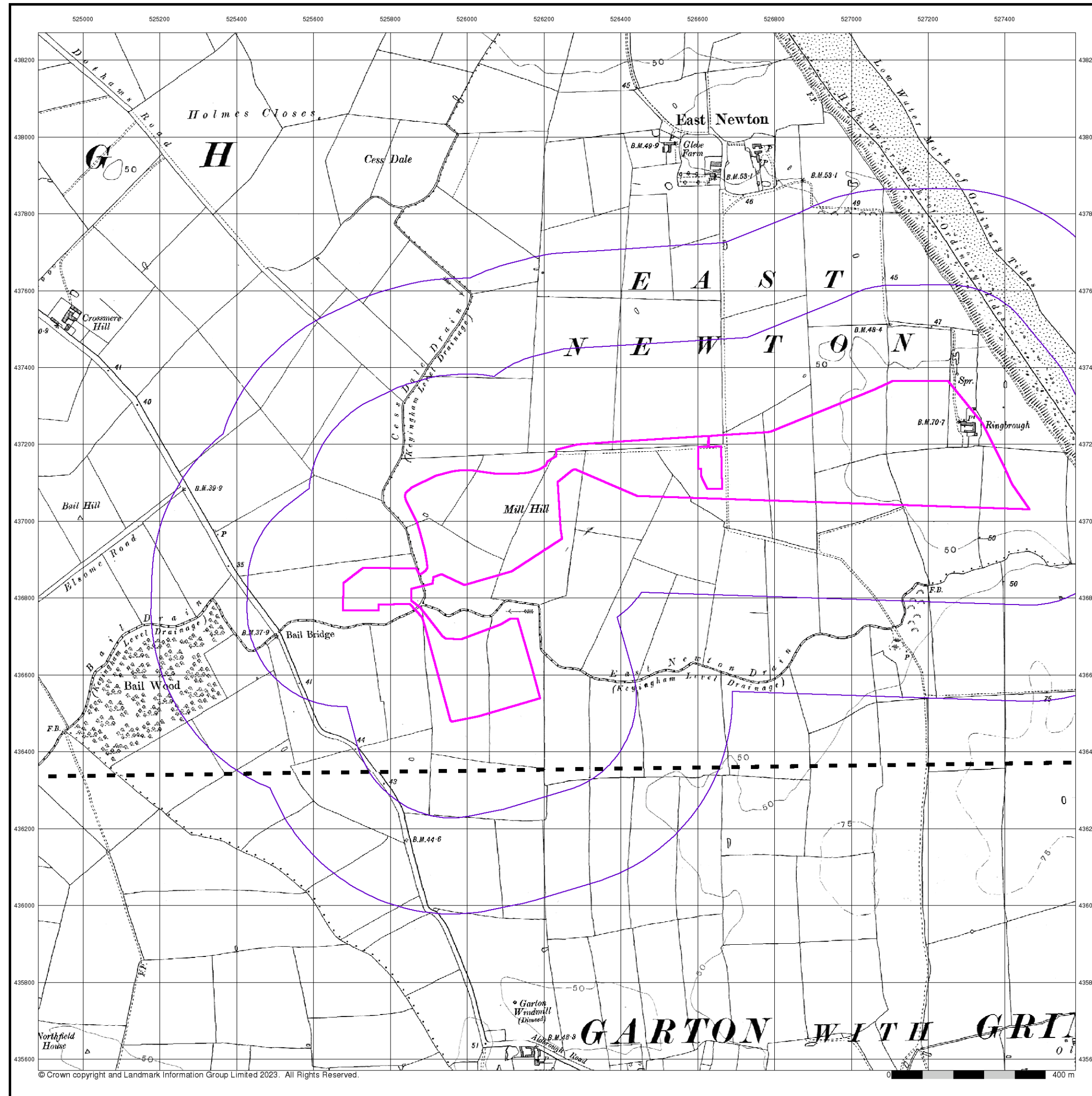


### Order Details

Order Number: 312082408\_1\_1  
Customer Ref: Pathfinder  
National Grid Reference: 526410, 436970  
Slice: A  
Site Area (Ha): 39.95  
Search Buffer (m): 500

### Site Details

Pathfinder



© Crown copyright and Landmark Information Group Limited 2023. All Rights Reserved.

# Envirocheck®

LANDMARK INFORMATION GROUP®

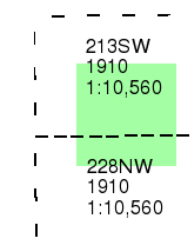
Yorkshire

Published 1910

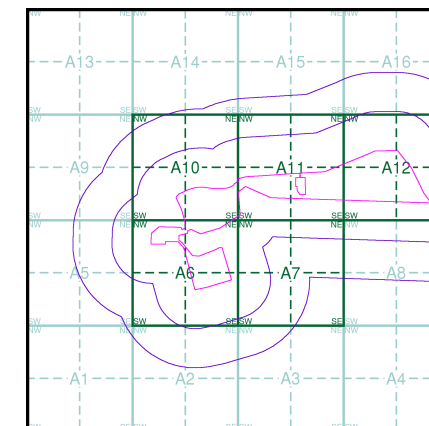
Source map scale - 1:10,560

The historical maps shown were reproduced from maps predominantly held at the scale adopted for England, Wales and Scotland in the 1840's. In 1854 the 1:2,500 scale was adopted for mapping urban areas; these maps were used to update the 1:10,560 maps. The published date given therefore is often some years later than the surveyed date. Before 1938, all OS maps were based on the Cassini Projection, with independent surveys of a single county or group of counties, giving rise to significant inaccuracies in outlying areas. In the late 1940's, a Provisional Edition was produced, which updated the 1:10,560 mapping from a number of sources. The maps appear unfinished - with all military camps and other strategic sites removed. These maps were initially overprinted with the National Grid. In 1970, the first 1:10,000 maps were produced using the Transverse Mercator Projection. The revision process continued until recently, with new editions appearing every 10 years or so for urban areas.

Map Name(s) and Date(s)



Historical Map - Slice A



Order Details

Order Number: 312082408\_1\_1  
Customer Ref: Pathfinder  
National Grid Reference: 526410, 436970  
Slice: A  
Site Area (Ha): 39.95  
Search Buffer (m): 500

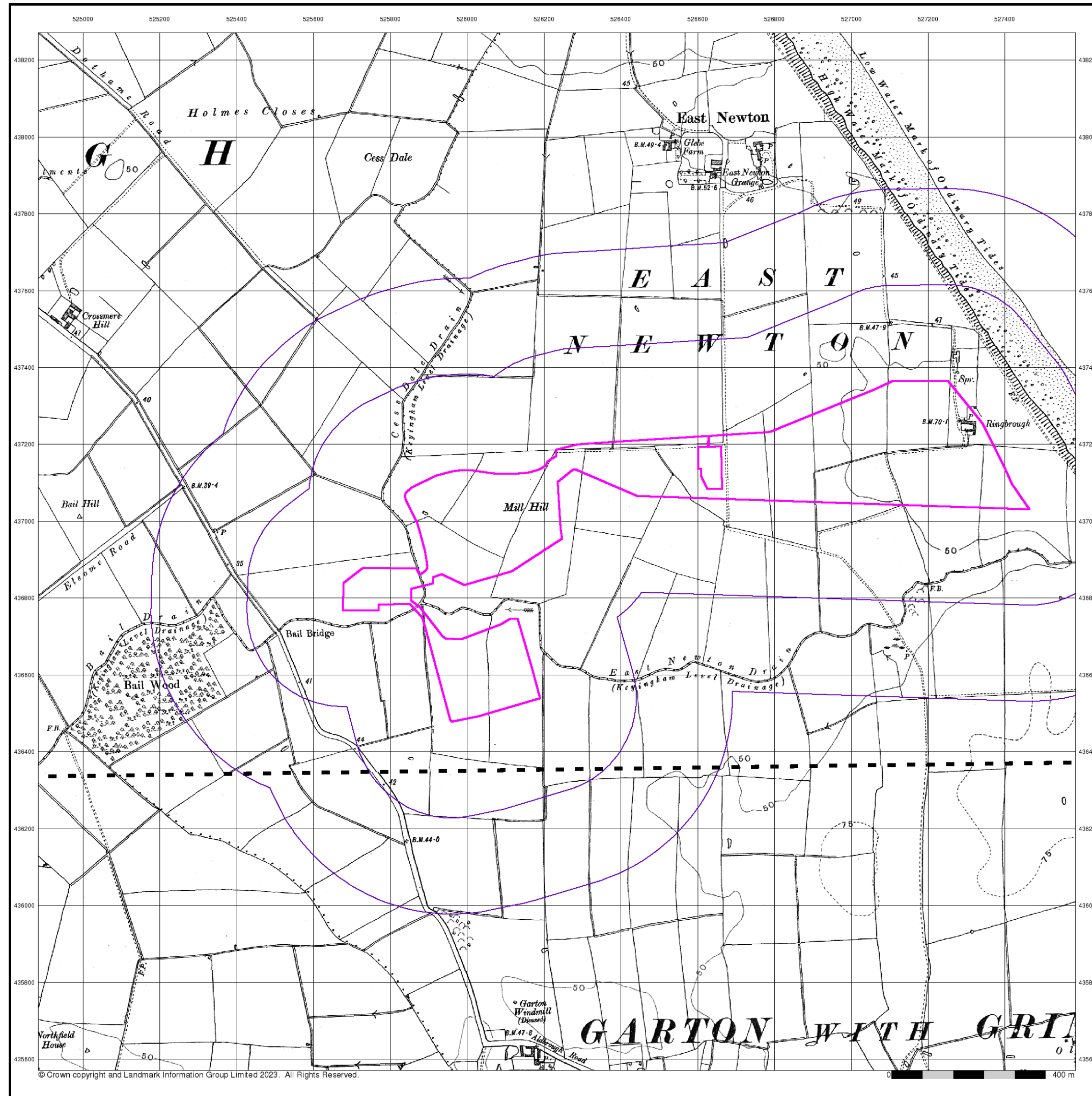
Site Details

Pathfinder

Landmark®  
INFORMATION GROUP

Tel: 0844 844 9952  
Fax: 0844 844 9951  
Web: www.envirocheck.co.uk





© Crown copyright and Landmark Information Group Limited 2023. All Rights Reserved.

# Envirocheck®

LANDMARK INFORMATION GROUP®

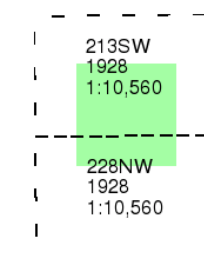
Yorkshire

Published 1928

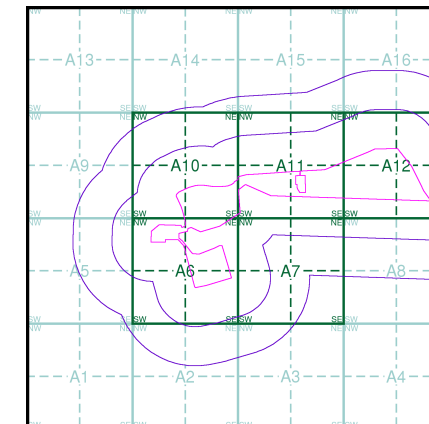
Source map scale - 1:10,560

The historical maps shown were reproduced from maps predominantly held at the scale adopted for England, Wales and Scotland in the 1840's. In 1854 the 1:2,500 scale was adopted for mapping urban areas; these maps were used to update the 1:10,560 maps. The published date given therefore is often some years later than the surveyed date. Before 1938, all OS maps were based on the Cassini Projection, with independent surveys of a single county or group of counties, giving rise to significant inaccuracies in outlying areas. In the late 1940's, a Provisional Edition was produced, which updated the 1:10,560 mapping from a number of sources. The maps appear unfinished - with all military camps and other strategic sites removed. These maps were initially overprinted with the National Grid. In 1970, the first 1:10,000 maps were produced using the Transverse Mercator Projection. The revision process continued until recently, with new editions appearing every 10 years or so for urban areas.

Map Name(s) and Date(s)



Historical Map - Slice A



Order Details

Order Number: 312082408\_1\_1  
Customer Ref: Pathfinder  
National Grid Reference: 526410, 436970  
Slice: A  
Site Area (Ha): 39.95  
Search Buffer (m): 500

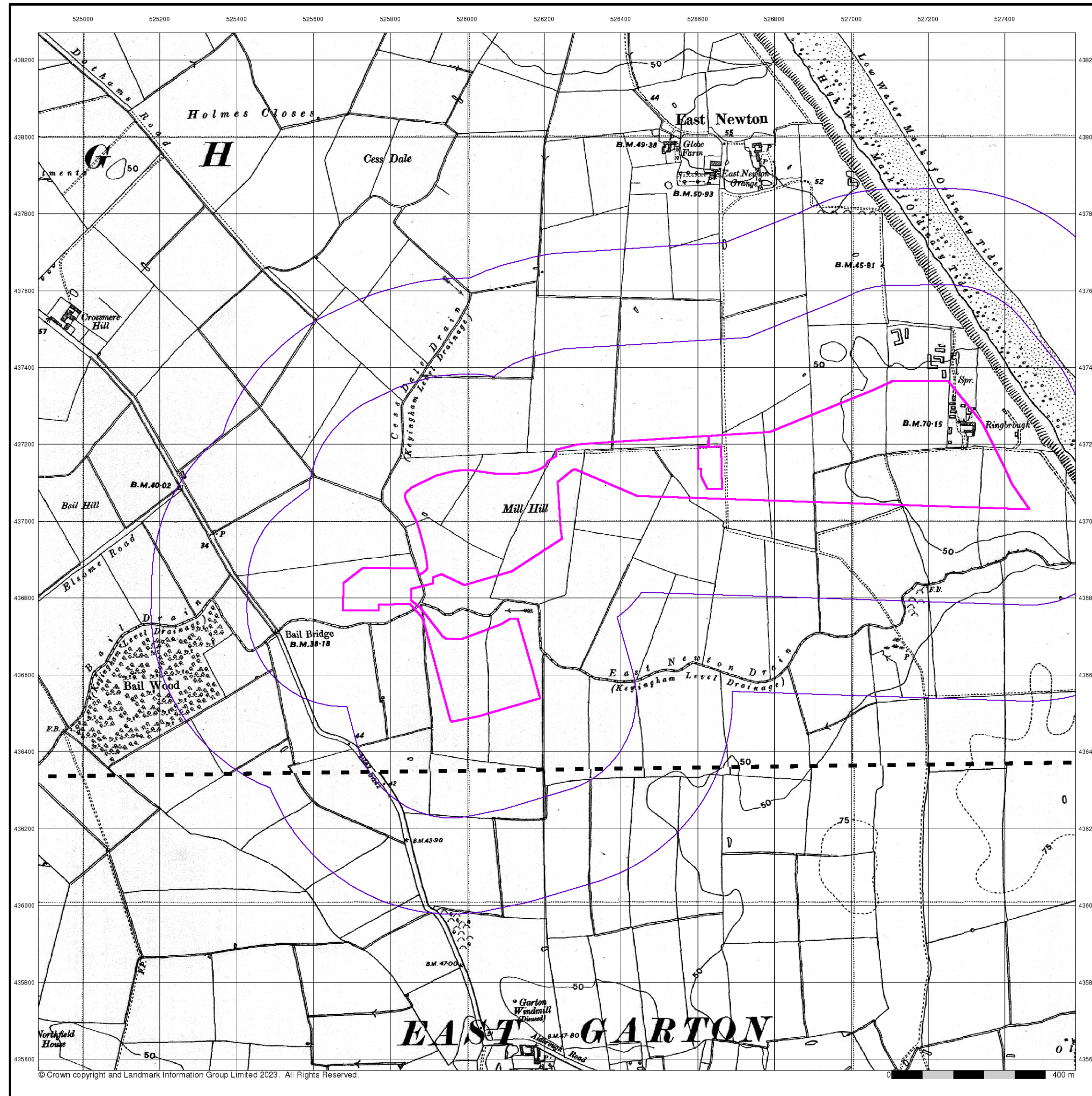
Site Details

Pathfinder

Landmark®  
INFORMATION GROUP

Tel: 0844 844 9952  
Fax: 0844 844 9951  
Web: www.envirocheck.co.uk





© Crown copyright and Landmark Information Group Limited 2023. All Rights Reserved.

# Envirocheck®

LANDMARK INFORMATION GROUP®

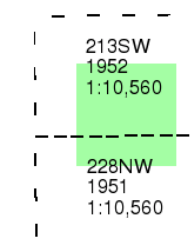
Yorkshire

Published 1951 - 1952

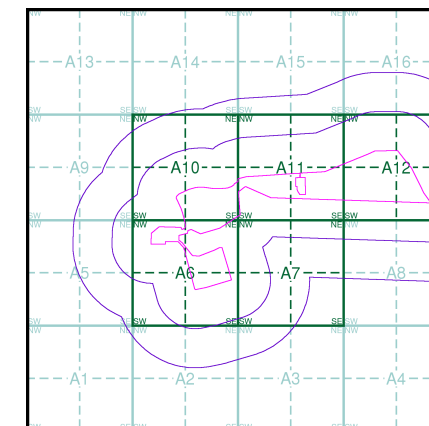
Source map scale - 1:10,560

The historical maps shown were reproduced from maps predominantly held at the scale adopted for England, Wales and Scotland in the 1840's. In 1854 the 1:2,500 scale was adopted for mapping urban areas; these maps were used to update the 1:10,560 maps. The published date given therefore is often some years later than the surveyed date. Before 1938, all OS maps were based on the Cassini Projection, with independent surveys of a single county or group of counties, giving rise to significant inaccuracies in outlying areas. In the late 1940's, a Provisional Edition was produced, which updated the 1:10,560 mapping from a number of sources. The maps appear unfinished - with all military camps and other strategic sites removed. These maps were initially overprinted with the National Grid. In 1970, the first 1:10,000 maps were produced using the Transverse Mercator Projection. The revision process continued until recently, with new editions appearing every 10 years or so for urban areas.

Map Name(s) and Date(s)



Historical Map - Slice A



Order Details

Order Number: 312082408\_1\_1  
Customer Ref: Pathfinder  
National Grid Reference: 526410, 436970  
Slice: A  
Site Area (Ha): 39.95  
Search Buffer (m): 500

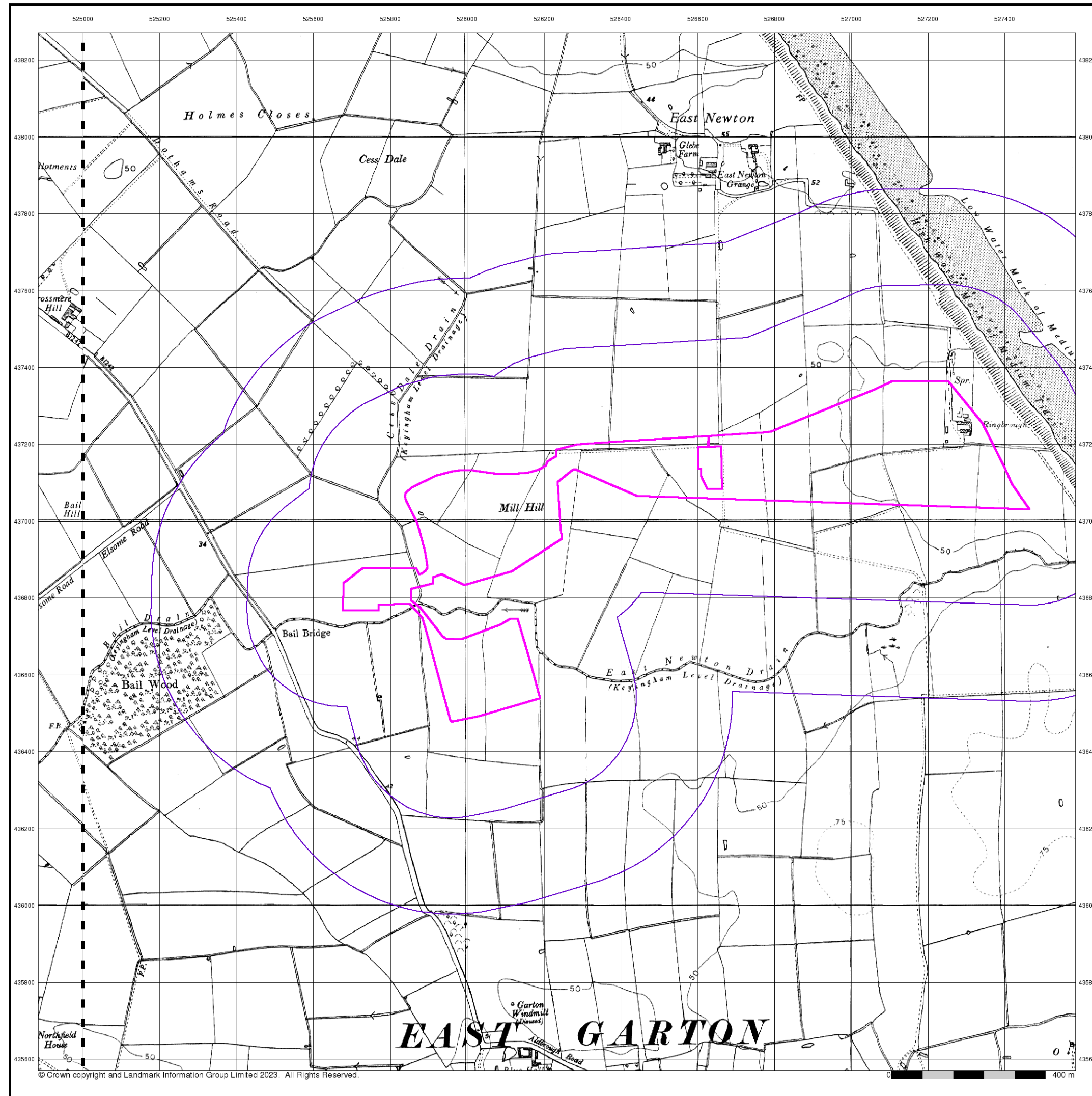
Site Details

Pathfinder

Landmark®  
INFORMATION GROUP

Tel: 0844 844 9952  
Fax: 0844 844 9951  
Web: www.envirocheck.co.uk





© Crown copyright and Landmark Information Group Limited 2023. All Rights Reserved.

# Envirocheck®

LANDMARK INFORMATION GROUP®

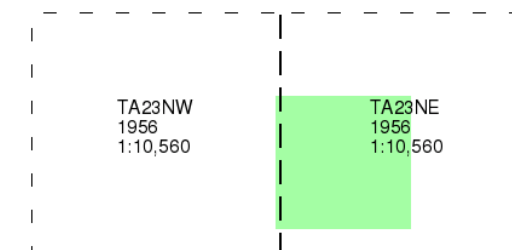
## Ordnance Survey Plan

Published 1956

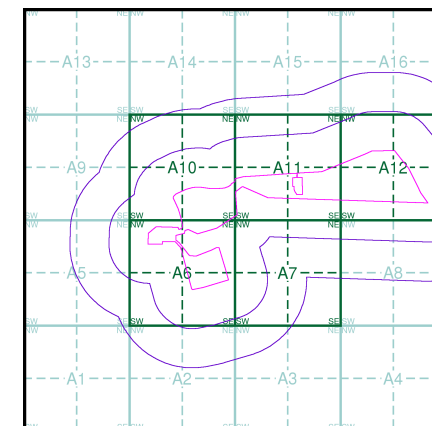
Source map scale - 1:10,000

The historical maps shown were reproduced from maps predominantly held at the scale adopted for England, Wales and Scotland in the 1840's. In 1854 the 1:2,500 scale was adopted for mapping urban areas; these maps were used to update the 1:10,560 maps. The published date given therefore is often some years later than the surveyed date. Before 1938, all OS maps were based on the Cassini Projection, with independent surveys of a single county or group of counties, giving rise to significant inaccuracies in outlying areas. In the late 1940's, a Provisional Edition was produced, which updated the 1:10,560 mapping from a number of sources. The maps appear unfinished - with all military camps and other strategic sites removed. These maps were initially overprinted with the National Grid. In 1970, the first 1:10,000 maps were produced using the Transverse Mercator Projection. The revision process continued until recently, with new editions appearing every 10 years or so for urban areas.

## Map Name(s) and Date(s)



## Historical Map - Slice A



## Order Details

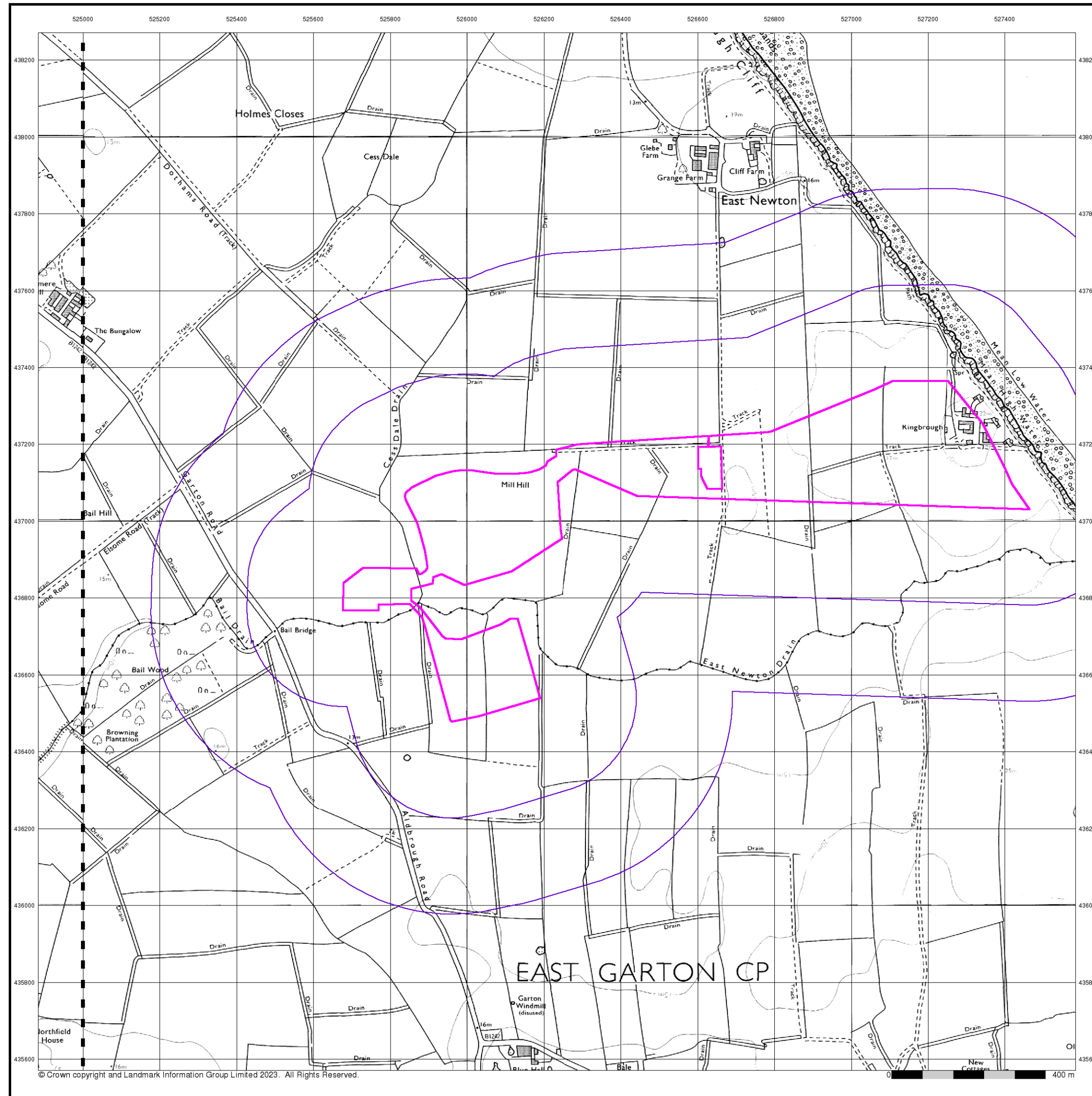
Order Number: 312082408\_1\_1  
Customer Ref: Pathfinder  
National Grid Reference: 526410, 436970  
Slice: A  
Site Area (Ha): 39.95  
Search Buffer (m): 500

## Site Details

Pathfinder

**Landmark®**  
INFORMATION GROUP

Tel: 0844 844 9952  
Fax: 0844 844 9951  
Web: [www.envirocheck.co.uk](http://www.envirocheck.co.uk)



© Crown copyright and Landmark Information Group Limited 2023. All Rights Reserved.

# Envirocheck®

LANDMARK INFORMATION GROUP®

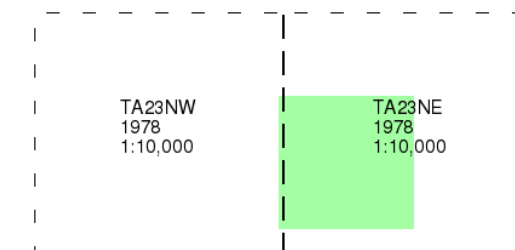
## Ordnance Survey Plan

Published 1978

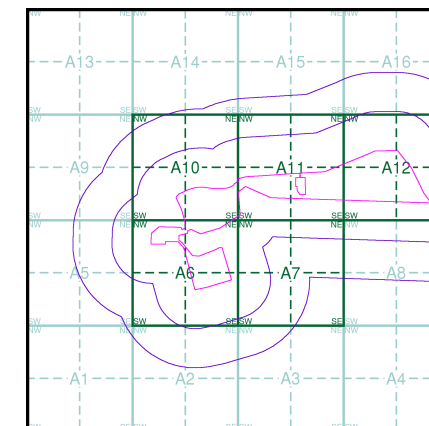
Source map scale - 1:10,000

The historical maps shown were reproduced from maps predominantly held at the scale adopted for England, Wales and Scotland in the 1840's. In 1854 the 1:2,500 scale was adopted for mapping urban areas; these maps were used to update the 1:10,560 maps. The published date given therefore is often some years later than the surveyed date. Before 1938, all OS maps were based on the Cassini Projection, with independent surveys of a single county or group of counties, giving rise to significant inaccuracies in outlying areas. In the late 1940's, a Provisional Edition was produced, which updated the 1:10,560 mapping from a number of sources. The maps appear unfinished - with all military camps and other strategic sites removed. These maps were initially overprinted with the National Grid. In 1970, the first 1:10,000 maps were produced using the Transverse Mercator Projection. The revision process continued until recently, with new editions appearing every 10 years or so for urban areas.

## Map Name(s) and Date(s)



## Historical Map - Slice A



## Order Details

Order Number: 312082408\_1\_1  
Customer Ref: Pathfinder  
National Grid Reference: 526410, 436970  
Slice: A  
Site Area (Ha): 39.95  
Search Buffer (m): 500

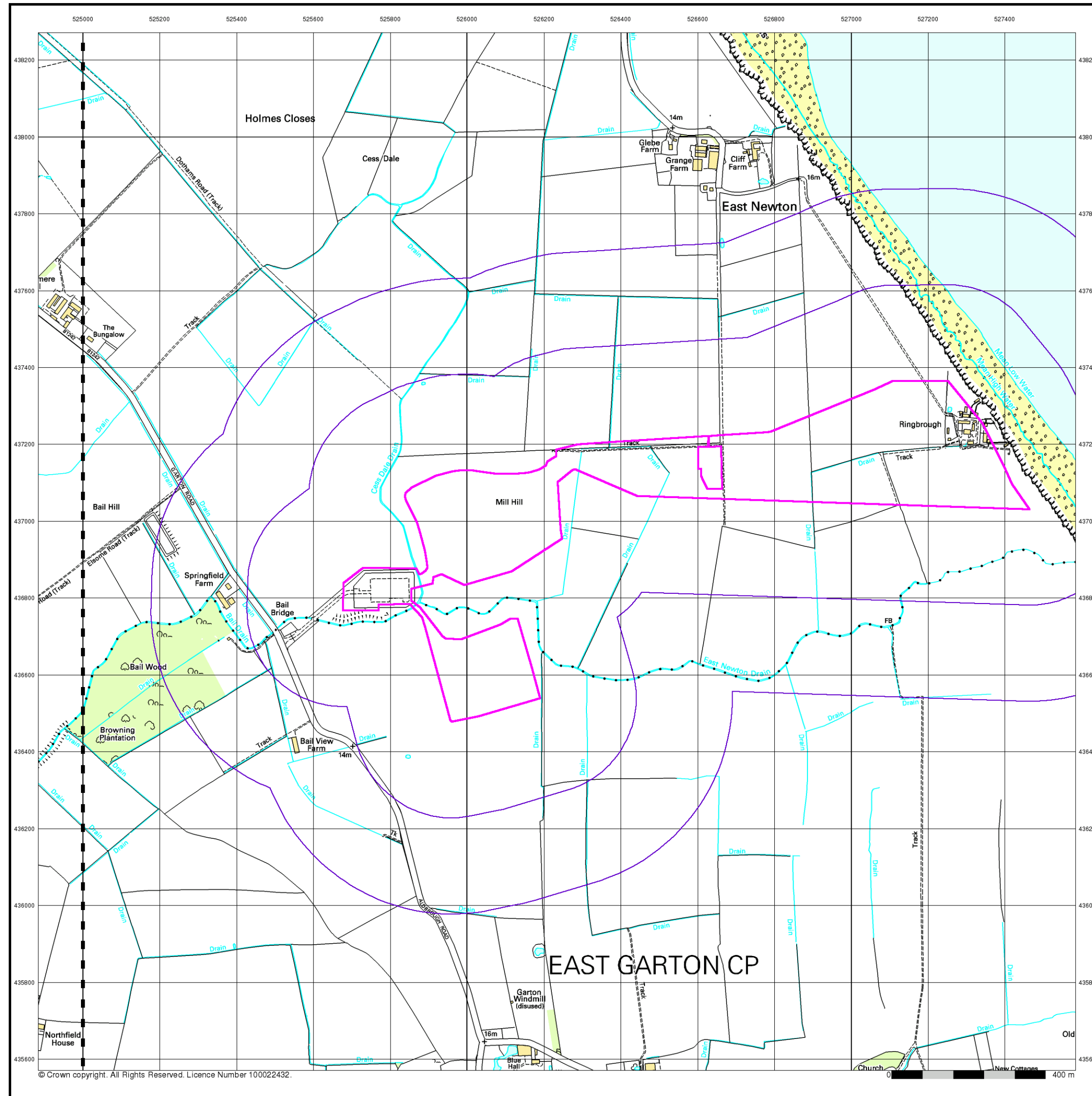
## Site Details

Pathfinder

**Landmark®**  
INFORMATION GROUP

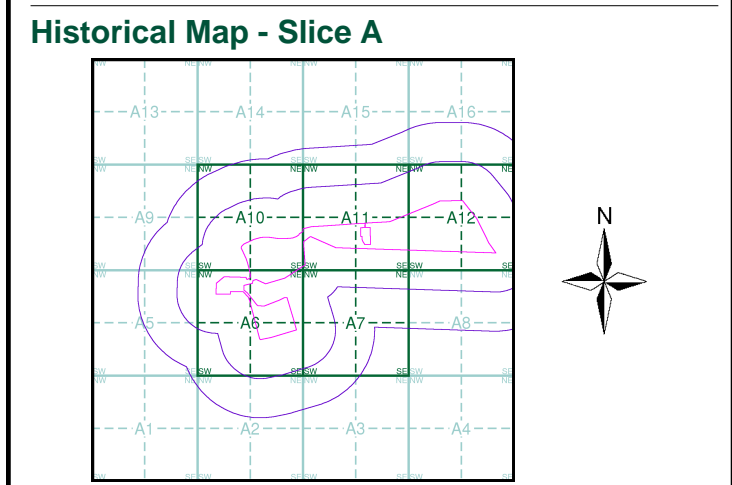
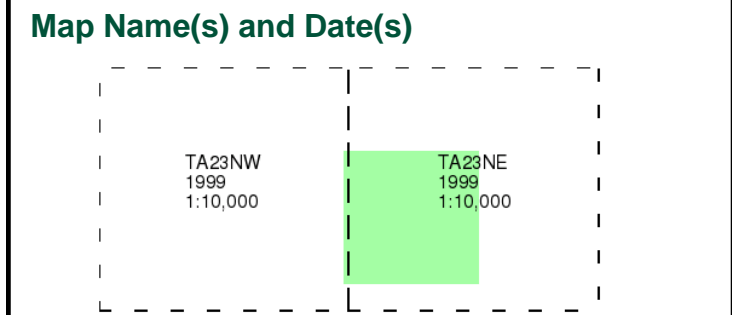
Tel: 0844 844 9952  
Fax: 0844 844 9951  
Web: [www.envirocheck.co.uk](http://www.envirocheck.co.uk)





**10k Raster Mapping**  
**Published 1999**  
**Source map scale - 1:10,000**

The historical maps shown were produced from the Ordnance Survey's 1:10,000 colour raster mapping. These maps are derived from Landplan which replaced the old 1:10,000 maps originally published in 1970. The data is highly detailed showing buildings, fences and field boundaries as well as all roads, tracks and paths. Road names are also included together with the relevant road number and classification. Boundary information depiction includes county, unitary authority, district, civil parish and constituency.

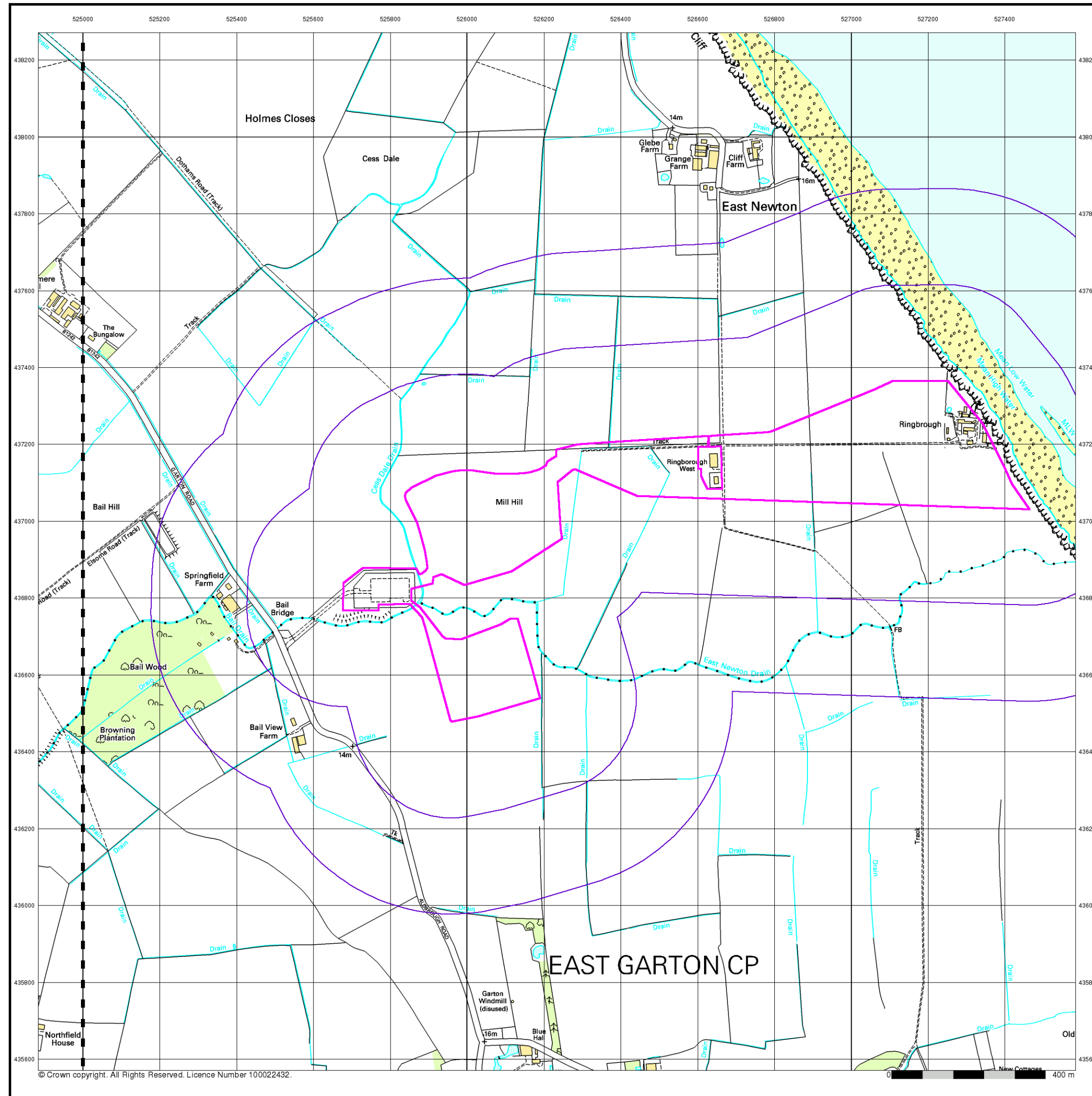


### Order Details

Order Number:	312082408_1_1
Customer Ref:	Pathfinder
National Grid Reference:	526410, 436970
Slice:	A
Site Area (Ha):	39.95
Search Buffer (m):	500

### Site Details

Pathfinder



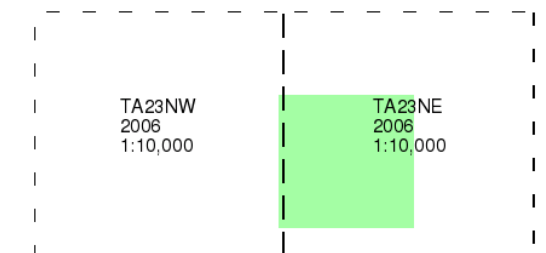
## 10k Raster Mapping

Published 2006

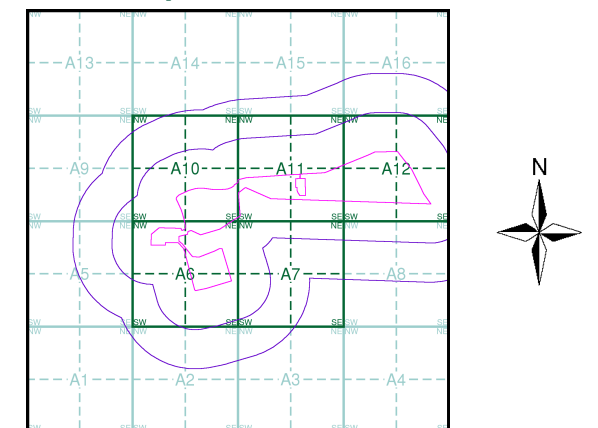
Source map scale - 1:10,000

The historical maps shown were produced from the Ordnance Survey's 1:10,000 colour raster mapping. These maps are derived from Landplan which replaced the old 1:10,000 maps originally published in 1970. The data is highly detailed showing buildings, fences and field boundaries as well as all roads, tracks and paths. Road names are also included together with the relevant road number and classification. Boundary information depiction includes county, unitary authority, district, civil parish and constituency.

### Map Name(s) and Date(s)



### Historical Map - Slice A



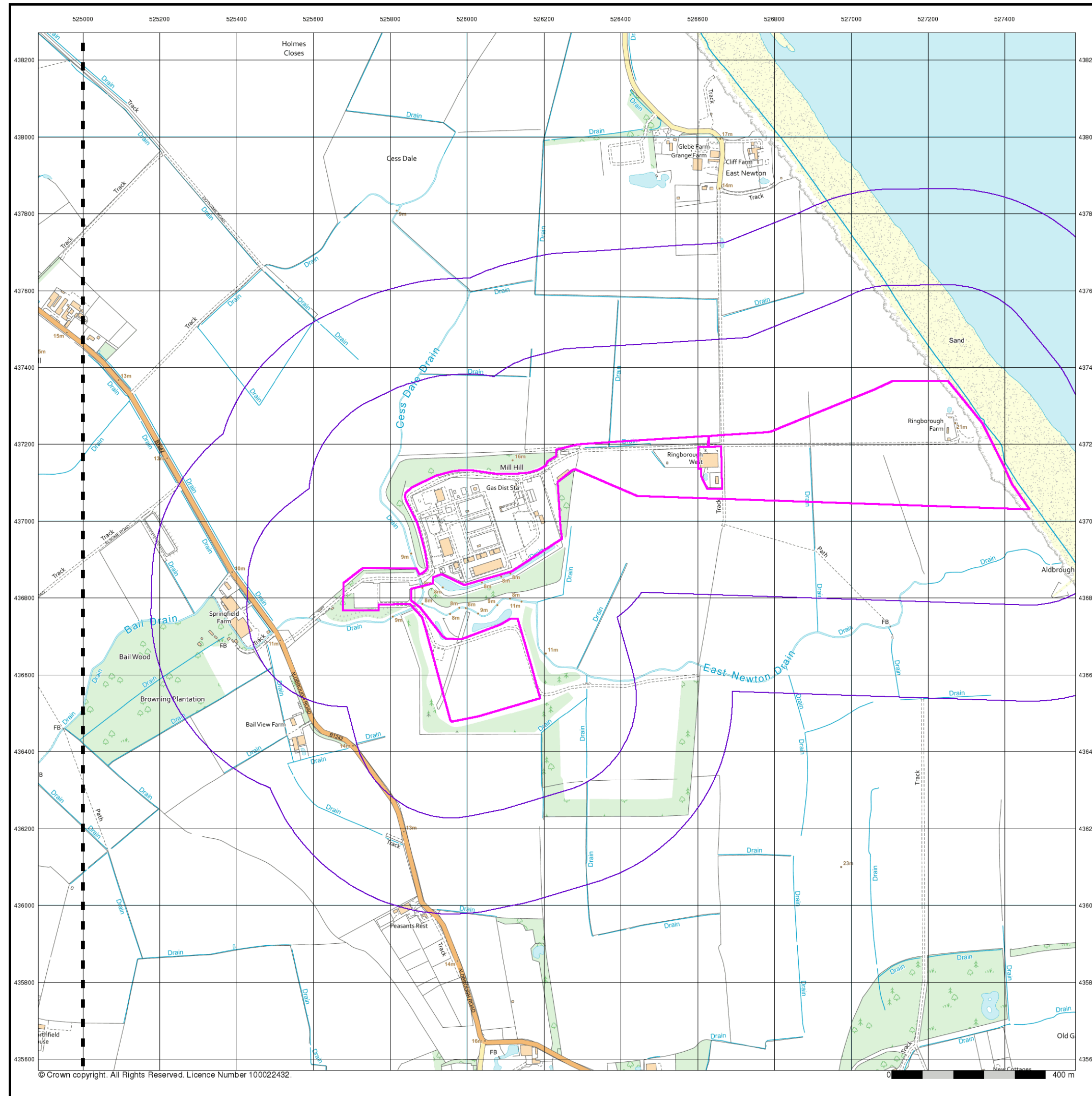
### Order Details

Order Number: 312082408\_1\_1  
Customer Ref: Pathfinder  
National Grid Reference: 526410, 436970  
Slice: A  
Site Area (Ha): 39.95  
Search Buffer (m): 500

### Site Details

Pathfinder





© Crown copyright. All Rights Reserved. Licence Number 100022432.

# Envirocheck®

LANDMARK INFORMATION GROUP®

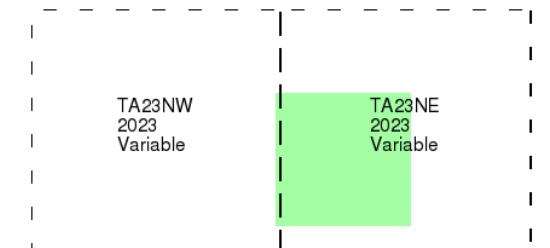
## VectorMap Local

### Published 2023

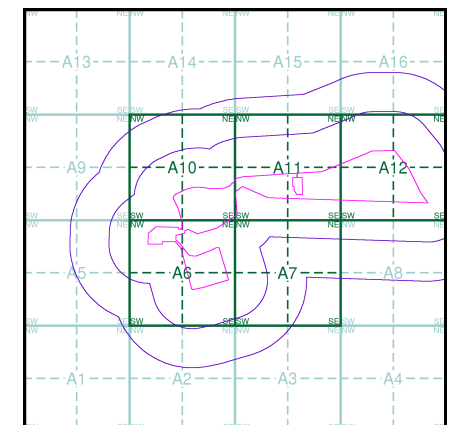
### Source map scale - 1:10,000

VectorMap Local (Raster) is Ordnance Survey's highest detailed 'backdrop' mapping product. These maps are produced from OS's VectorMap Local, a simple vector dataset at a nominal scale of 1:10,000, covering the whole of Great Britain, that has been designed for creating graphical mapping. OS VectorMap Local is derived from large-scale information surveyed at 1:1250 scale (covering major towns and cities), 1:2500 scale (smaller towns, villages and developed rural areas), and 1:10 000 scale (mountain, moorland and river estuary areas).

### Map Name(s) and Date(s)



### Historical Map - Slice A



### Order Details

Order Number:	312082408_1_1
Customer Ref:	Pathfinder
National Grid Reference:	526410, 436970
Slice:	A
Site Area (Ha):	39.95
Search Buffer (m):	500

### Site Details

Pathfinder

**Landmark®**  
LANDMARK INFORMATION GROUP

Tel: 0844 844 9952  
Fax: 0844 844 9951  
Web: [www.envirocheck.co.uk](http://www.envirocheck.co.uk)