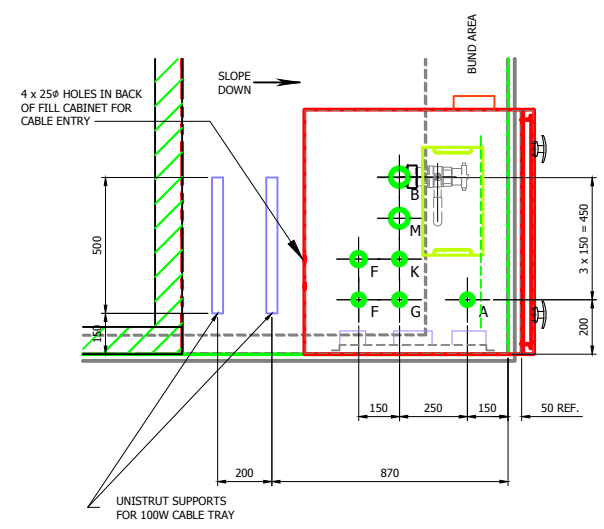
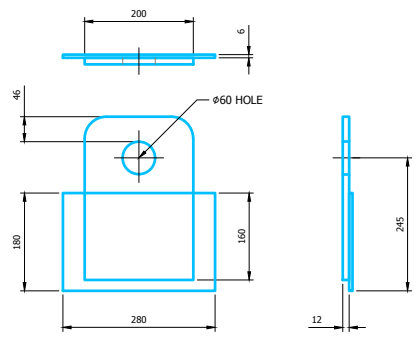
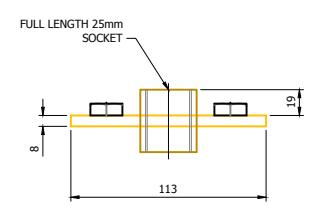
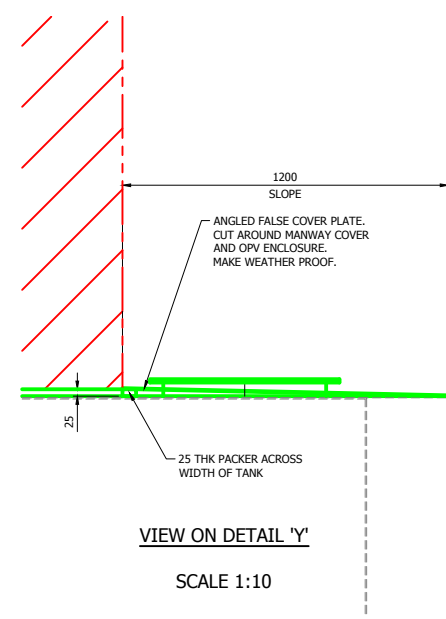
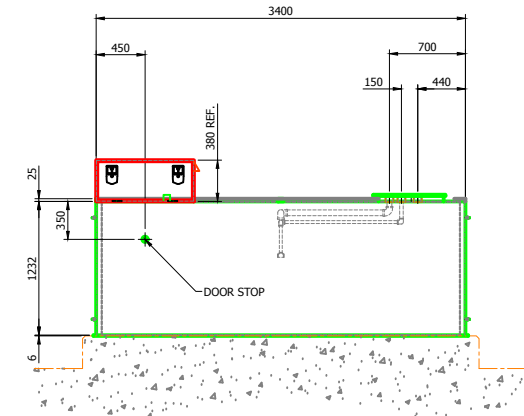
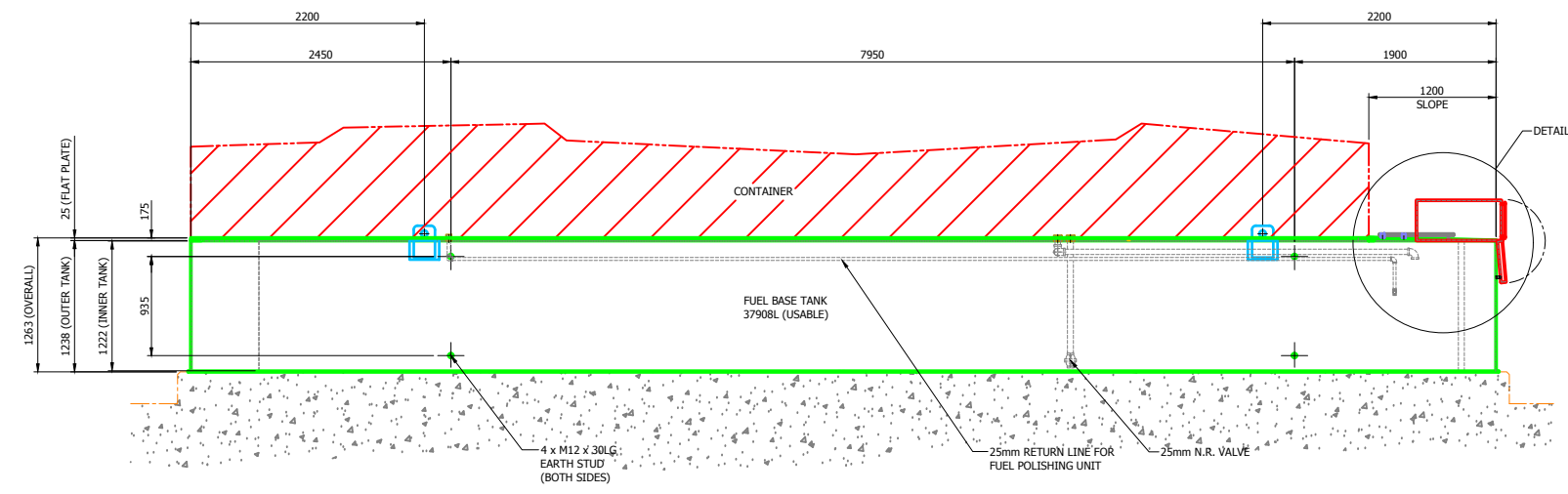
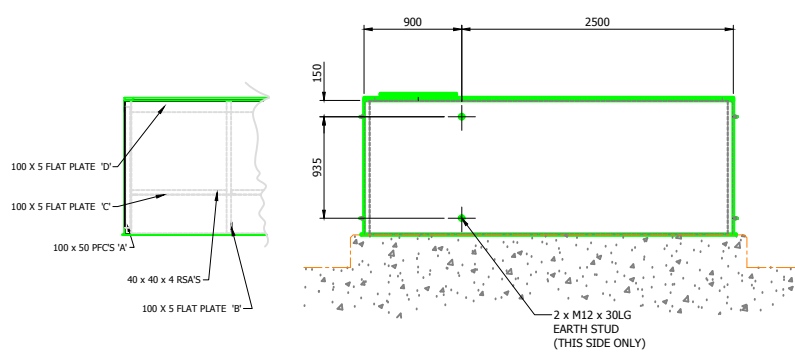
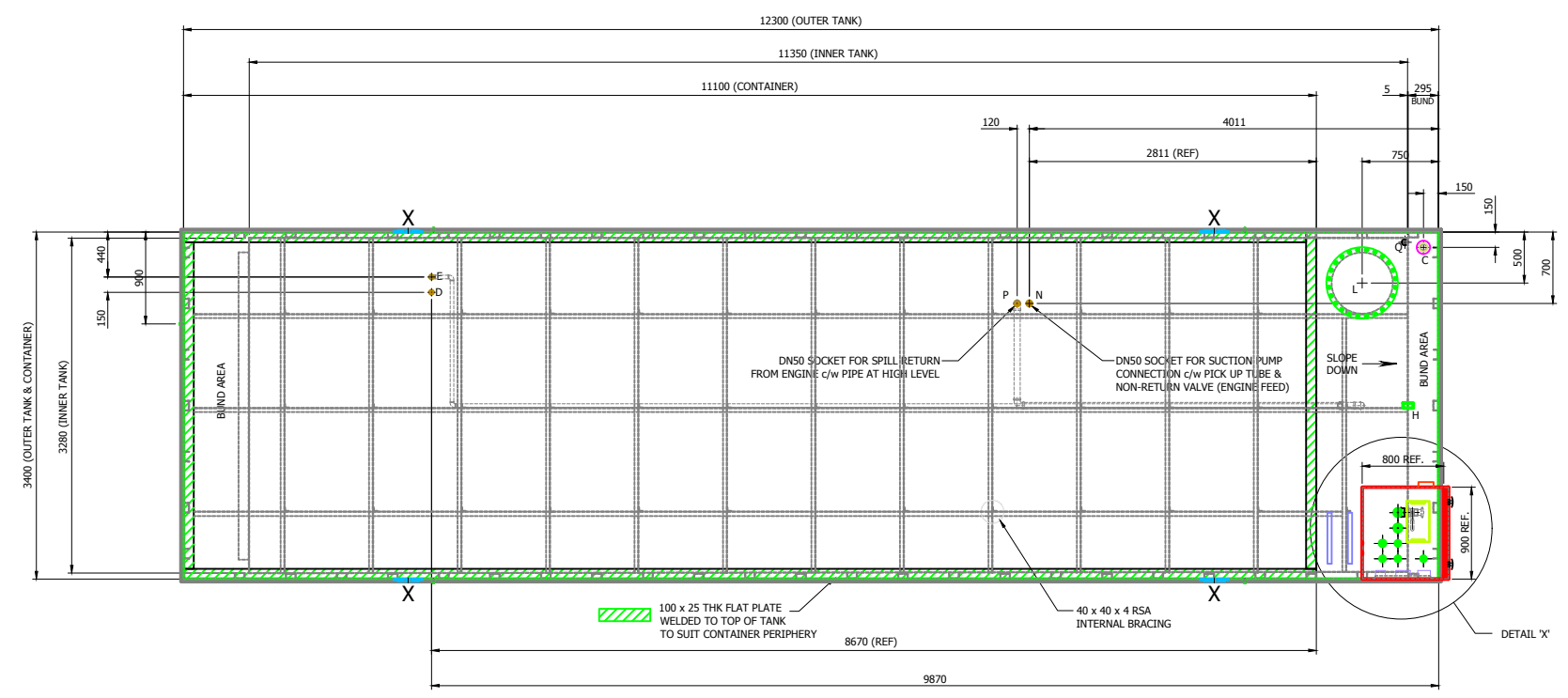


- A = DN25 SOCKET FOR TANK BUND LEAK SWITCH
- B = DN50 SOCKET FOR TANK FILL
- C = DN50 SOCKET MUSHROOM VENT
- D = DN25 SOCKET FOR FUEL POLISHING INLET
- E = DN25 SOCKET FOR FUEL POLISHING RETURN
- F = DN25 SOCKET (2 OFF SPARES)
- G = DN40 SOCKET FOR OVERFILL ALARM & LOW LEVEL ALARM.
- H = VENT PIPE BETWEEN INNER TANK & BUND
- J =
- K = DN25 SOCKET FOR O.L.E. C2020 PROBE
- L = ϕ 600mm INSPECTION ACCESS
- M = DN50 SOCKET (SPARE)
- N = DN50 SOCKET FOR ENGINE FEED c/w FULL BORE 25mm CHECK VALVE.
- P = DN50 SOCKET FOR ENGINE SPILL RETURN
- Q = DN25 SUCTION LINE c/w NRV

- NOTES:**
1. TANK TO BE MANUFACTURED i.a.w. BS 799 Pt. 5 Type 1.
 2. TANK TO BE MANUFACTURED FROM 5mm THK STEEL / BASE 6mm THK STEEL TO S275JR BS EN 10025:2004.
 3. TANK FINISH -
 (i) ELECTRIC WIRE BRUSH (WHERE NECESSARY) & DEGREASE.
 (ii) 1 COAT PRIMER.
 (iii) 2 COATS OF AIR DRYING ENAMEL.
 COLOUR - BS 4800 18-B-25 DARK ADMIRALTY GREY.
 MINIMUM PAINT THICKNESS (DFT) - 70um.
 4. TANK CAPACITY - 37,908 Ltr NOMINAL, 45,490 Ltr BRIMFUL.
 5. WEIGHT - 11.0 Tonnes (DRY), 50 Tonnes (WET).
 6. WELDING TO BE CARRIED OUT i.a.w. BS EN 1011-1:2009 WITH REFERENCE TO BS EN 1011-2:2001.
 7. WELDING SYMBOLS USED ARE i.a.w. BS EN ISO 22553.
 8. INSPECTION & TESTING TO BE CARRIED OUT i.a.w. BS EN 1011-1:2009.
 9. TESTING
 (i) TANK - 0.2 Bar.
 (ii) BUND - 0.1 Bar MAX. TEST PRESSURE.
 ISSUE TEST CERTIFICATE ON SUCCESSFUL COMPLETION.



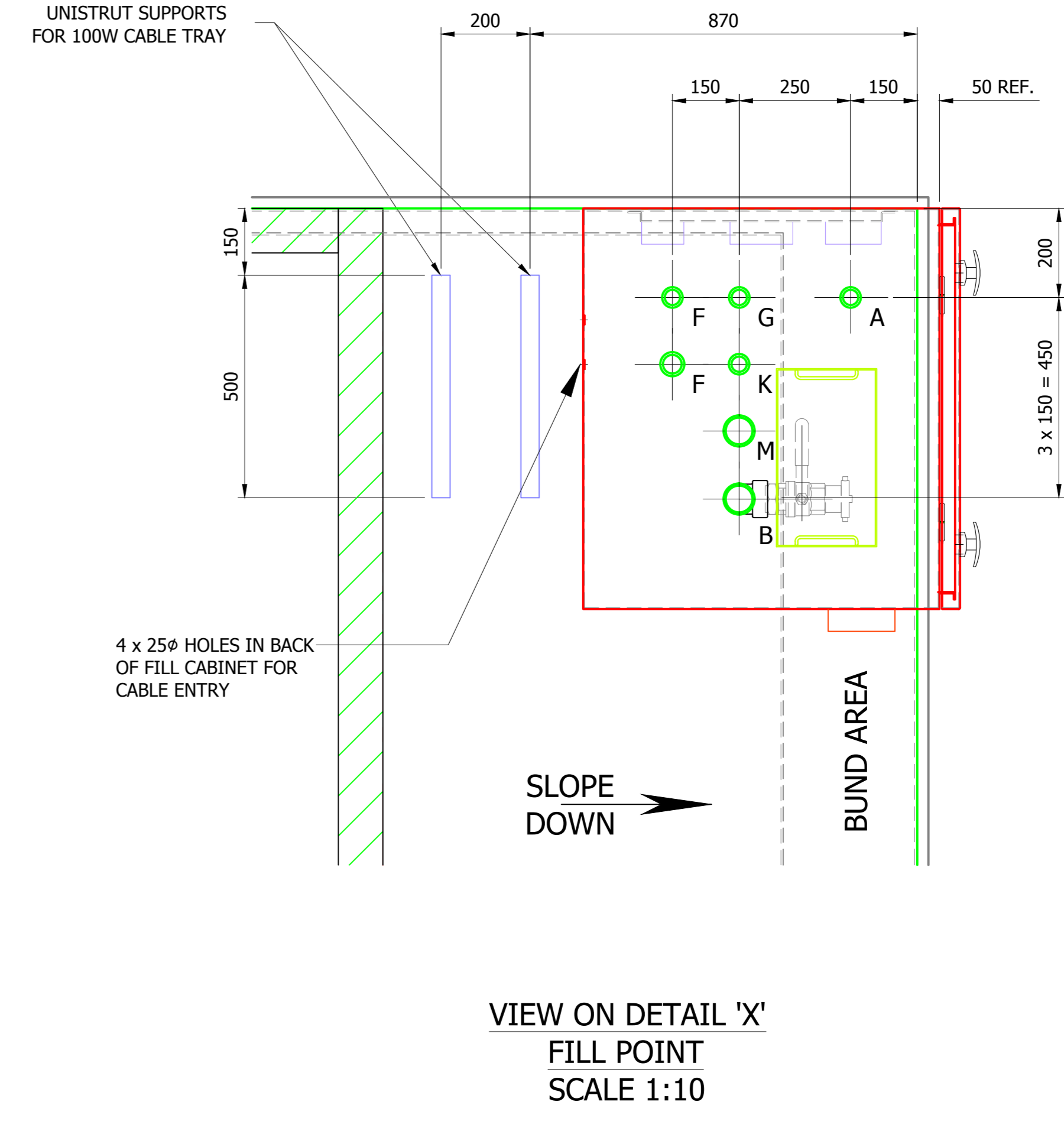
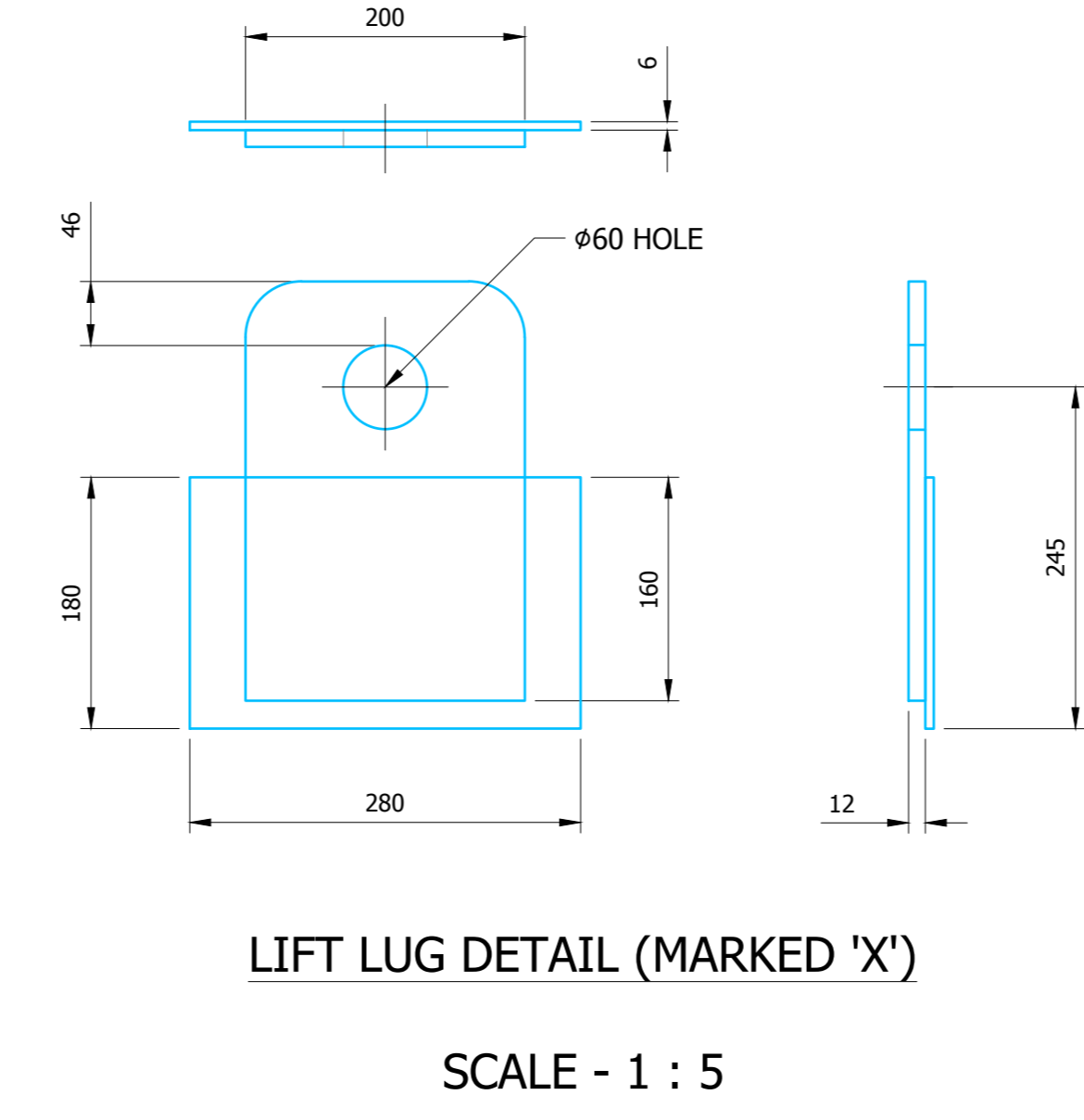
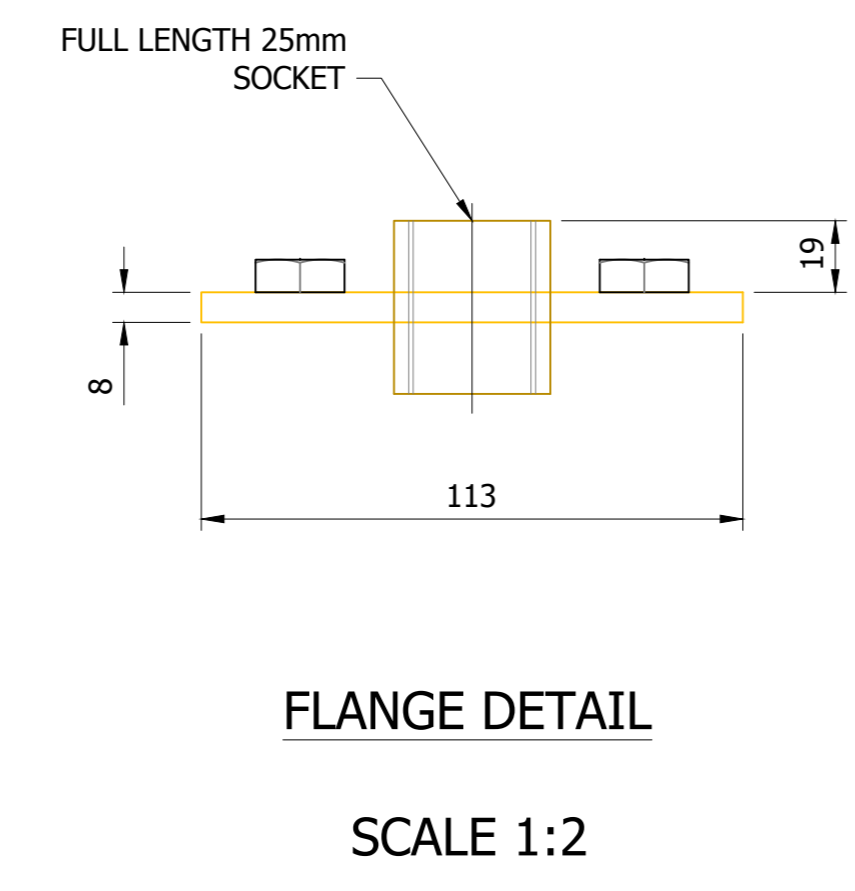
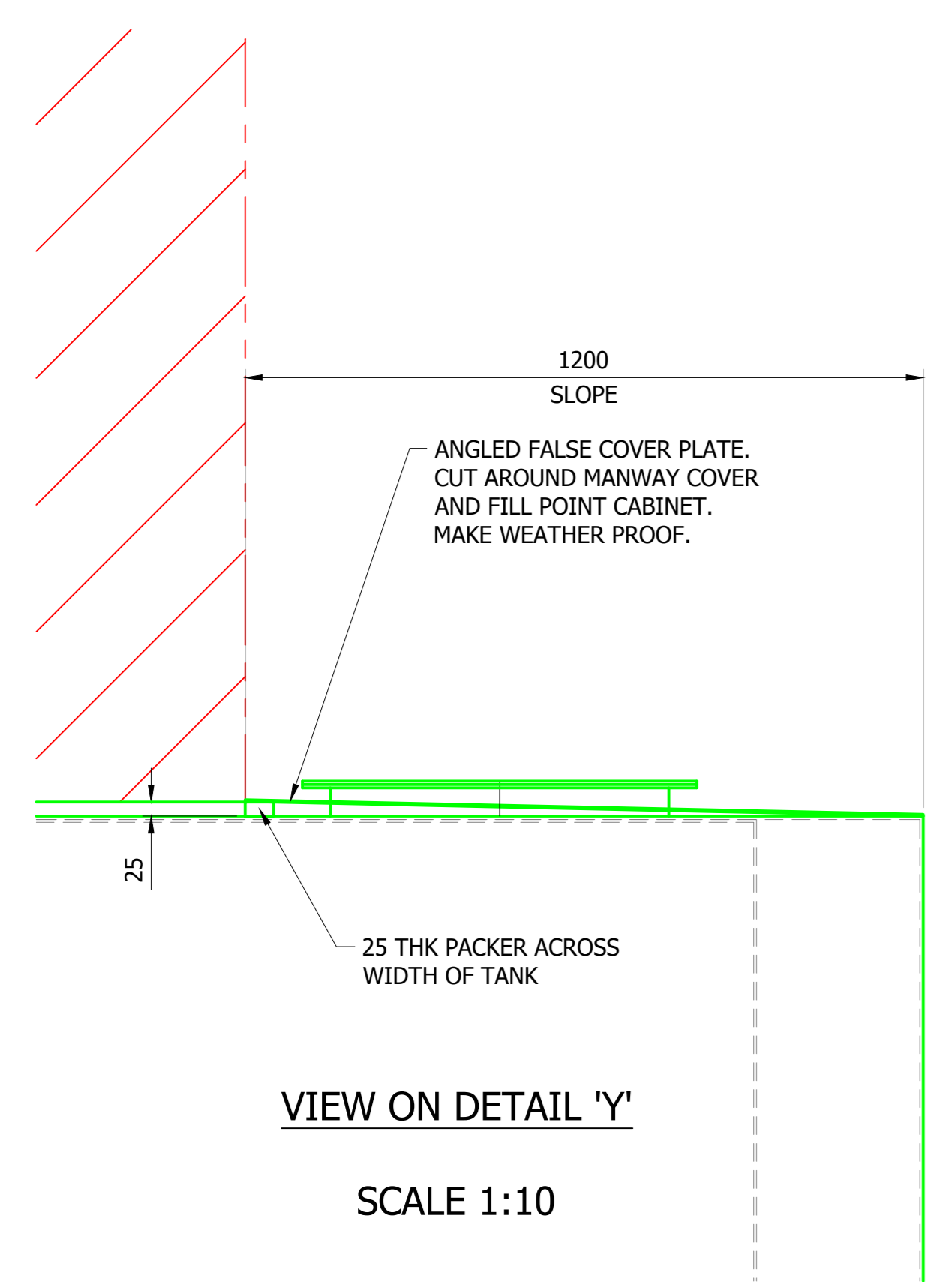
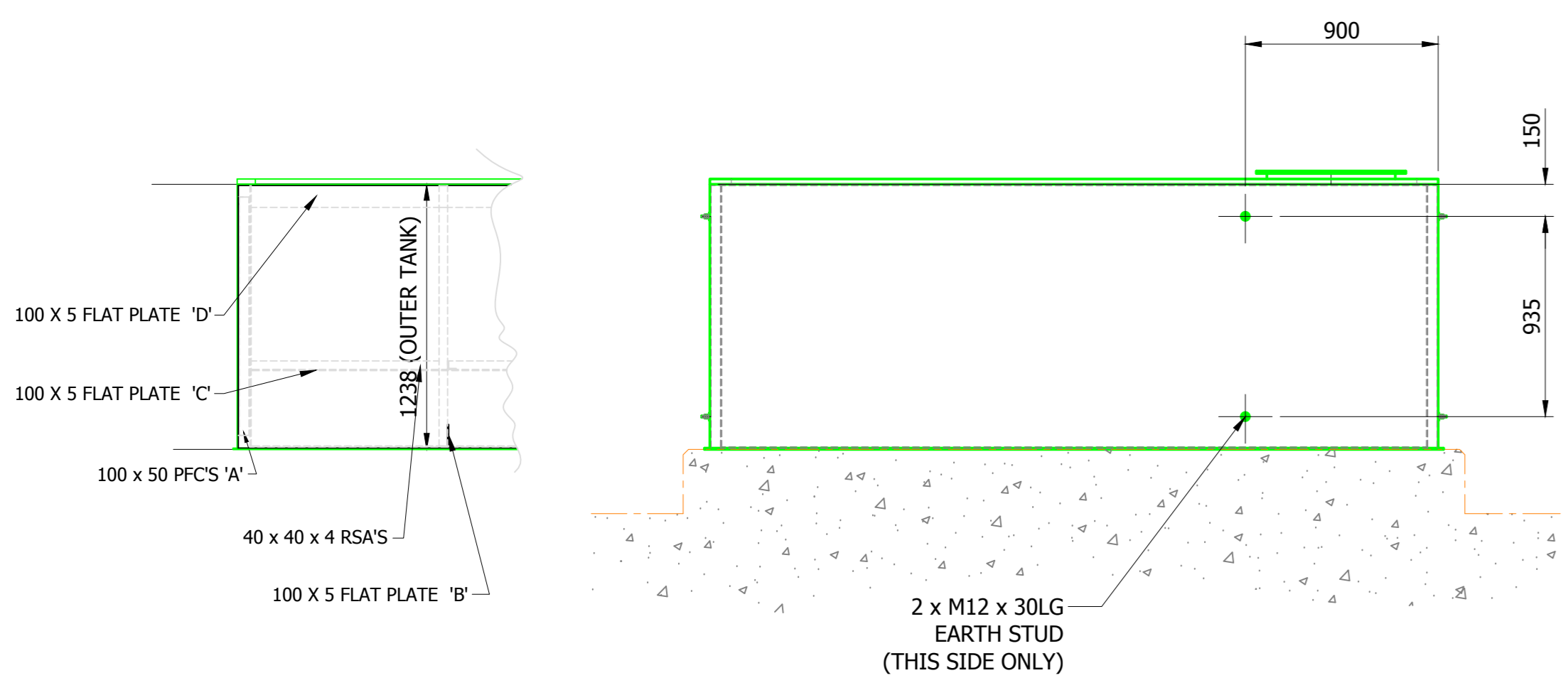
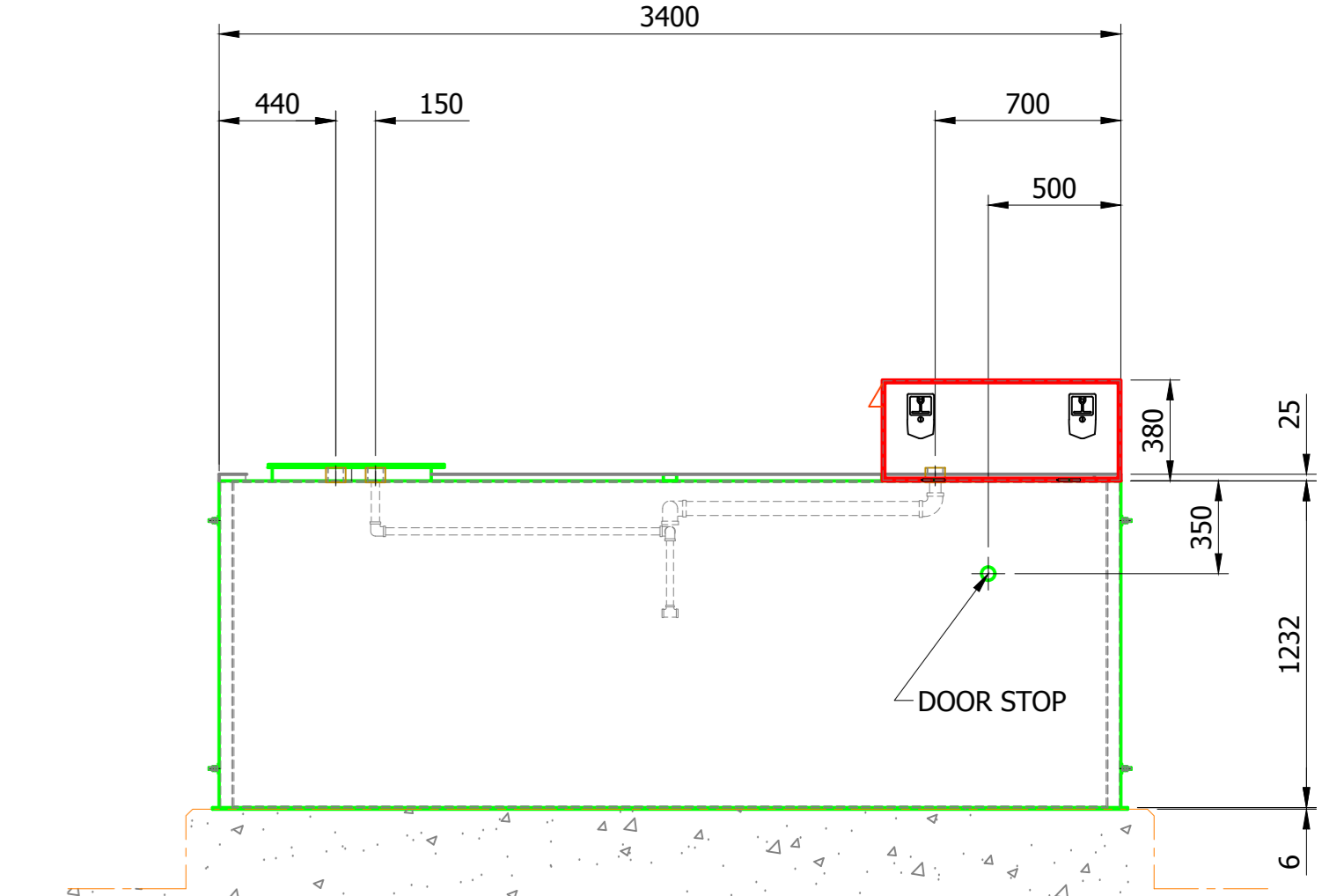
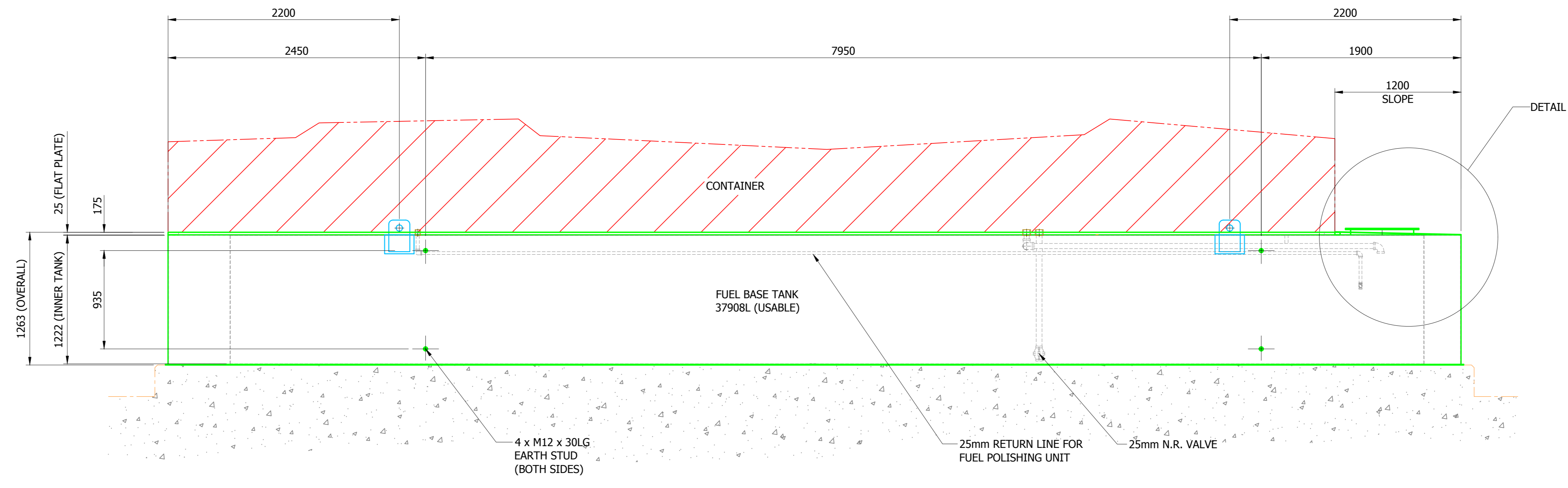
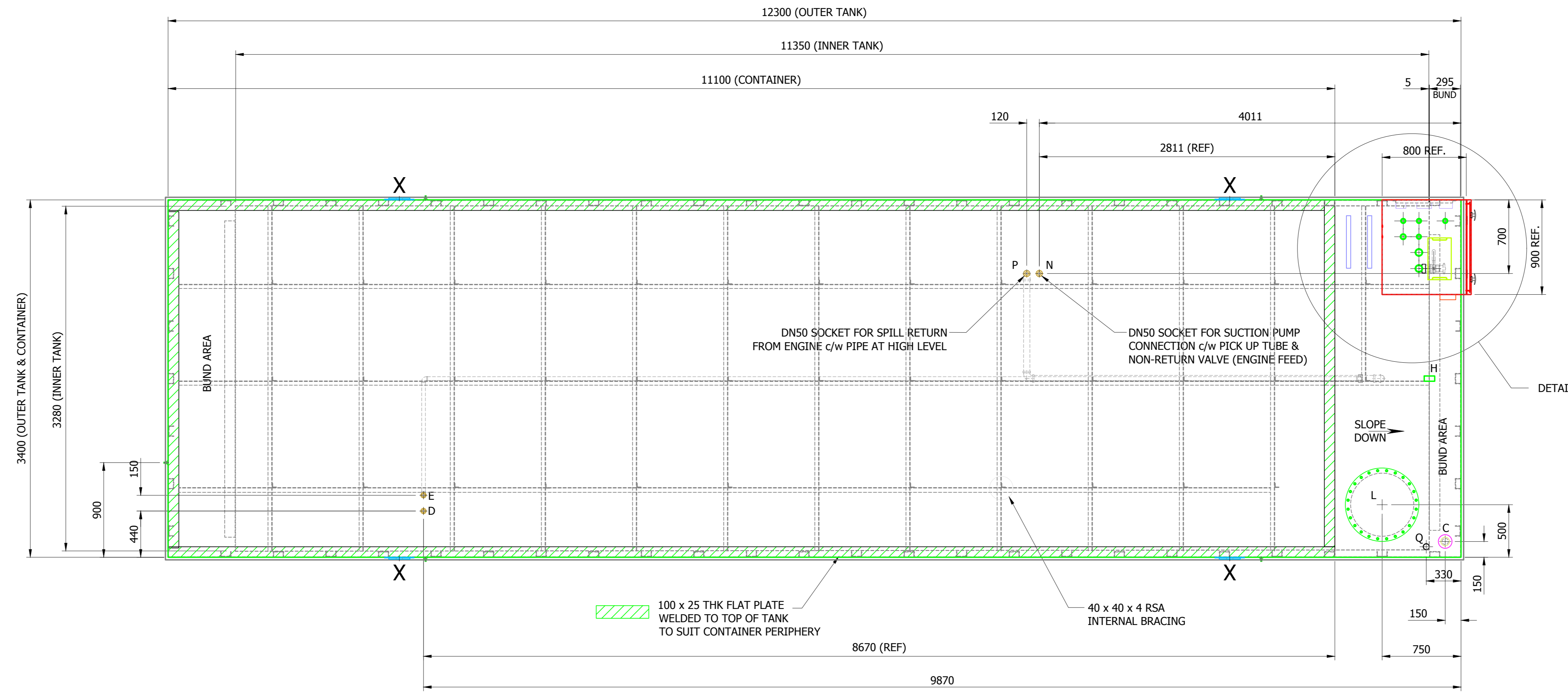
- NOTE:**
1. FOR FILL POINT CABINET INFORMATION SEE DRG. No. JN400140-007.
 2. ALL BLANKING PLUGS TO BE METAL.
 3. FUEL TANK SIZED TO PROVIDE SUFFICIENT FUEL FOR 72 HOURS RUNNING @ 100% STANDBY RATING (526.5 L/hr x 72 hr = 37,908 L)

Rev	By	Check	Date	Description
0				ISSUED FOR CONSTRUCTION
1				DESIGN REVIEW
2				FIRST ISSUE
3				Change

All Dimensions in MM, Unless Otherwise Stated.
AVK ENGINEERING SOLUTIONS
 Power Systems House,
 Malvern Road, Malvern, Victoria, 3660, Australia. SLB 79E
 Tel: 01629 503900 Fax: 01629 503999
 Customer: GRATTE BROTHERS
 Site: ARK A105 CODY PARK
 Title: BASE FUEL TANK DETAIL TYPE 'A' (37908L USABLE)
 Drawn: J.A. Date: 22-08-19 Scale: 1:25 U.O.S.
 Checked: J.A. Date: 22-08-19 Sheet: 1 of 2
 Drawing No: JN400140-006 SH1 1 of 2 SHTS

- A = DN25 SOCKET FOR TANK BUND LEAK SWITCH
- B = DN50 SOCKET FOR TANK FILL
- C = DN50 SOCKET MUSHROOM VENT
- D = DN25 SOCKET FOR FUEL POLISHING INLET
- E = DN25 SOCKET FOR FUEL POLISHING RETURN
- F = DN25 SOCKET (2 OFF SPARES)
- G = DN40 SOCKET FOR OVERFILL ALARM & LOW LEVEL ALARM.
- H = VENT PIPE BETWEEN INNER TANK & BUND
- J =
- K = DN25 SOCKET FOR O.L.E. C2020 PROBE
- L = ø600mm INSPECTION ACCESS
- M = DN50 SOCKET (SPARE)
- N = DN50 SOCKET FOR ENGINE FEED c/w FULL BORE 25mm CHECK VALVE.
- P = DN50 SOCKET FOR ENGINE SPILL RETURN
- Q = DN50 SUCTION LINE c/w NRW

- NOTES:**
1. TANK TO BE MANUFACTURED i.a.w. BS 799 Pt. 5 Type J.
 2. TANK TO BE MANUFACTURED FROM 5mm THK STEEL / BASE 6mm THK STEEL TO S275JR BS EN 10025:2004.
 3. TANK FINISH :-
 (i) ELECTRIC WIRE BRUSH (WHERE NECESSARY) & DEGREASE.
 (ii) 1 COAT PRIMER.
 (iii) 2 COATS OF AIR DRYING ENAMEL.
 COLOUR - BS 4800 18-B-25 DARK ADMIRALTY GREY.
 MINIMUM PAINT THICKNESS (DFT) - 70um.
 4. TANK CAPACITY - 37,908 Ltr NOMINAL, 45,490 Ltr BRIMFUL.
 5. WEIGHT - 11.0 Tonnes (DRY), 50 Tonnes (WET).
 6. WELDING TO BE CARRIED OUT i.a.w. BS EN 1011-1:2009 WITH REFERENCE TO BS EN 1011-2:2001.
 7. WELDING SYMBOLS USED ARE i.a.w. BS EN ISO 22553.
 8. INSPECTION & TESTING TO BE CARRIED OUT i.a.w. BS EN 1011-1:2009.
 9. TESTING
 (i) TANK - 0.2 Bar.
 (ii) BUND - 0.1 Bar MAX. TEST PRESSURE.
 ISSUE TEST CERTIFICATE ON SUCCESSFUL COMPLETION.



NOTE:

1. FOR FILL POINT CABINET INFORMATION SEE DRG. No. JN400140-007.
2. ALL BLANKING PLUGS TO BE METAL.
3. FUEL TANK SIZED TO PROVIDE SUFFICIENT FUEL FOR 72 HOURS RUNNING @ 100% STANDBY RATING (526.5 L/hr x 72 hr = 37,908 L)

Rev.	Date	Scale	By	Check
C	04/01/20			A.O.
B	28/10/19			R.D.
A	01/09/19			R.D.
0	22/05/19			R.D.

3rd Angle Projection Do Not Scale.

AVKSS (UK) LTD
 Power Systems House,
 Malvern Road, Midlandwood,
 Berkshire, SL6 7RE.
 Tel: 01628 503900 Fax: 01628 503999

Customer: **GRATTE BROTHERS**

Site: **ARK A105 CODY PARK**

File: **BASE FUEL TANK DETAIL TYPE 'B' (37908L USABLE)**

Drawn: R.D. Date: 22-05-19 Scale: 1:25 U.O.S.
 Checked: Date: Sheet Size: A0
 Drawing No.: JN400140-006 SHT 2 of 2 SHTS