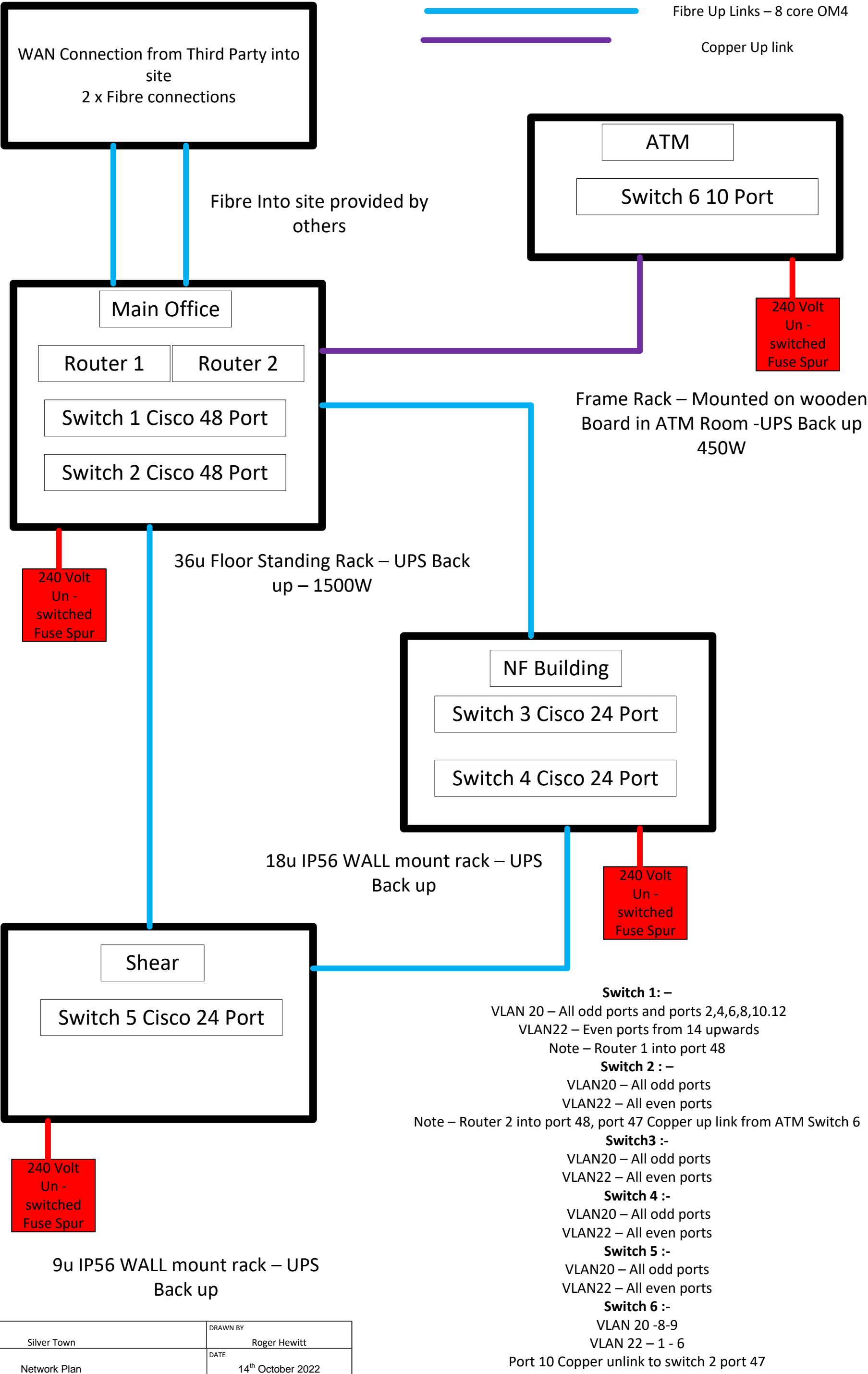
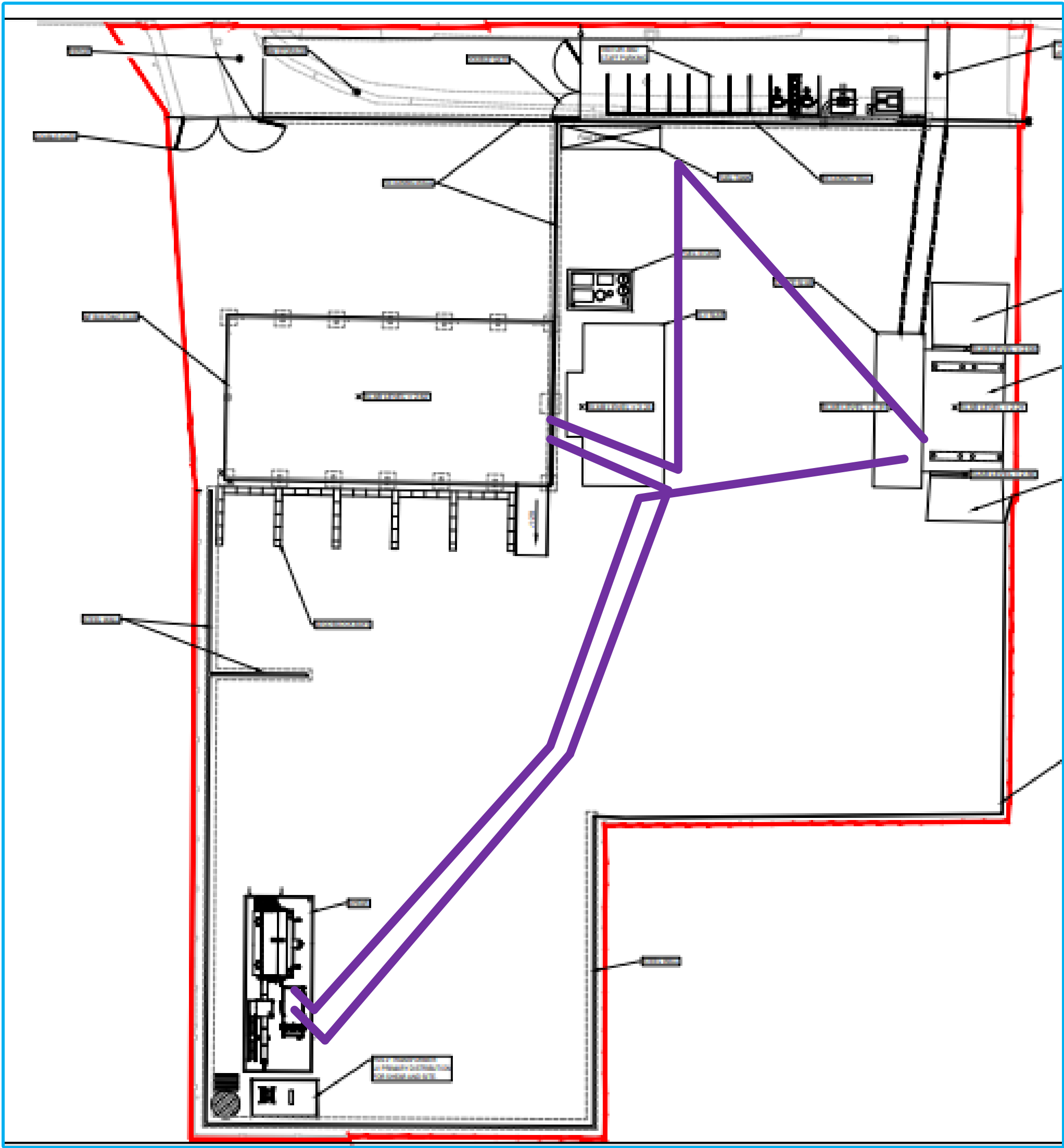


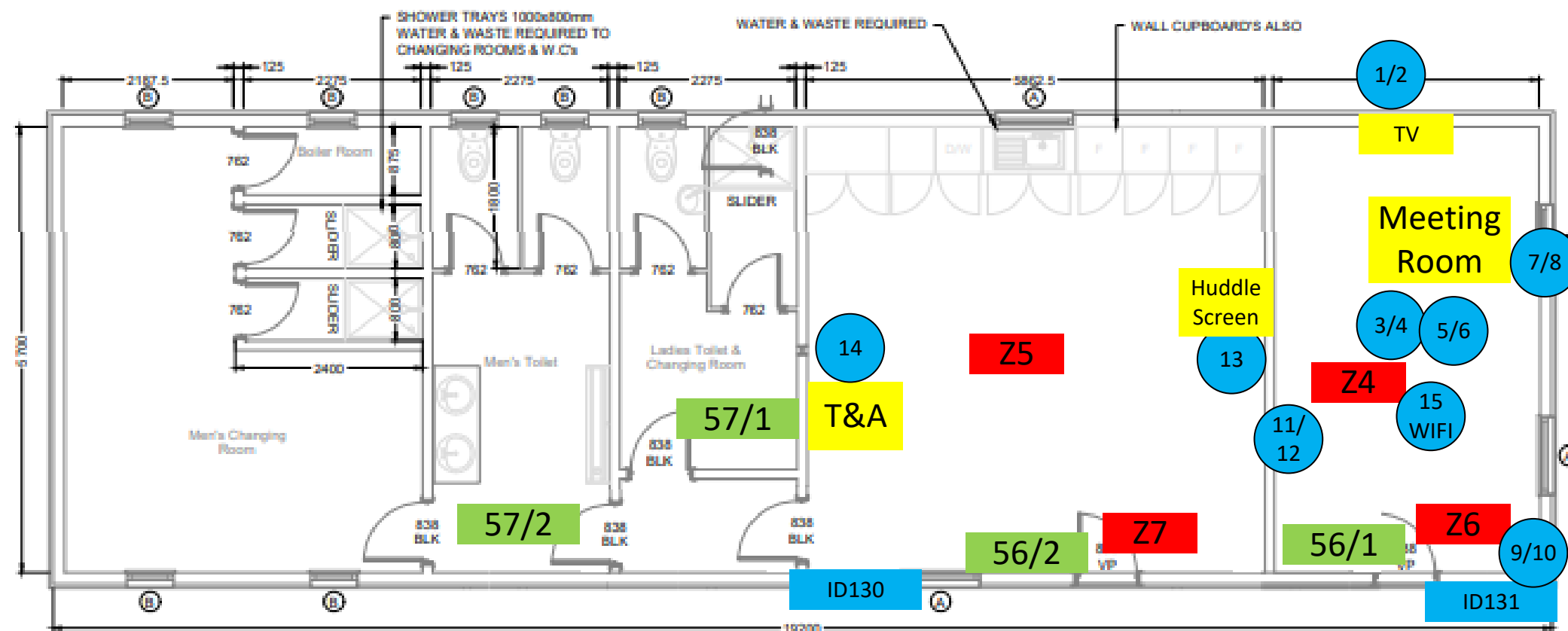
| | | | |
|-------------|-------------|----------|-------------------------------|
| TITLE | Silver Town | DRAWN BY | Roger Hewitt |
| DESCRIPTION | Main Site | DATE | 14 th October 2022 |



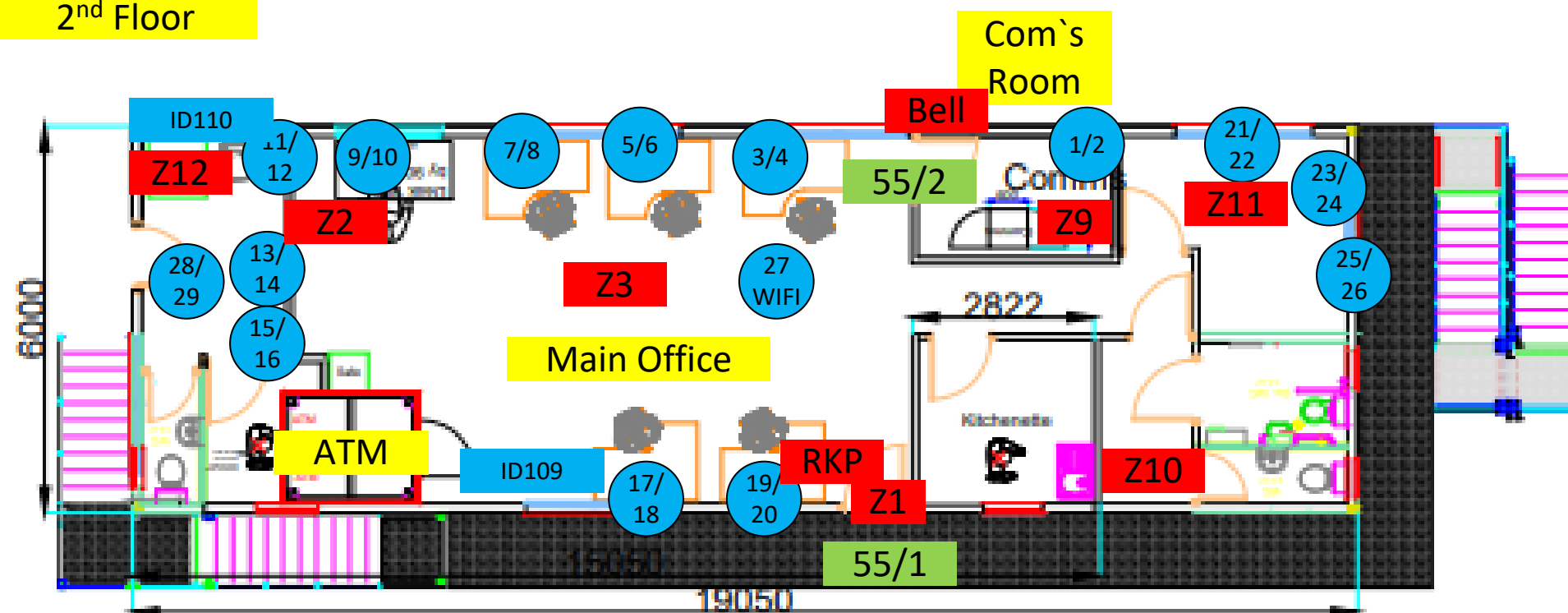
| | | | |
|-------------|--------------|----------|-------------------------------|
| TITLE | Silver Town | DRAWN BY | Roger Hewitt |
| DESCRIPTION | Network Plan | DATE | 14 th October 2022 |



| | | | |
|-------------|--------------------|----------|-------------------------------|
| TITLE | Silver Town | DRAWN BY | Roger Hewitt |
| DESCRIPTION | Fibre Network Plan | DATE | 14 th October 2022 |




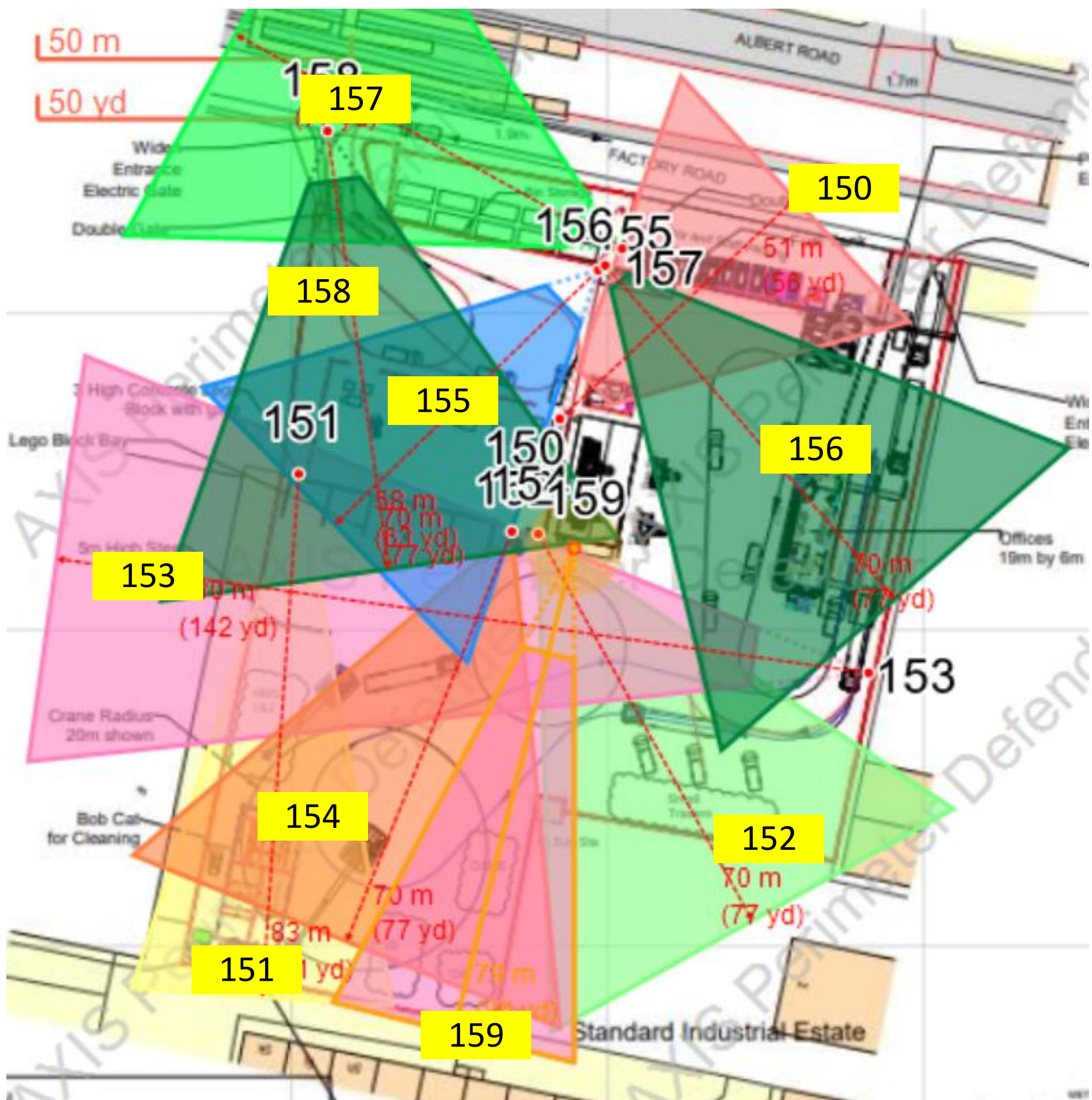
2nd Floor




Ground Floor

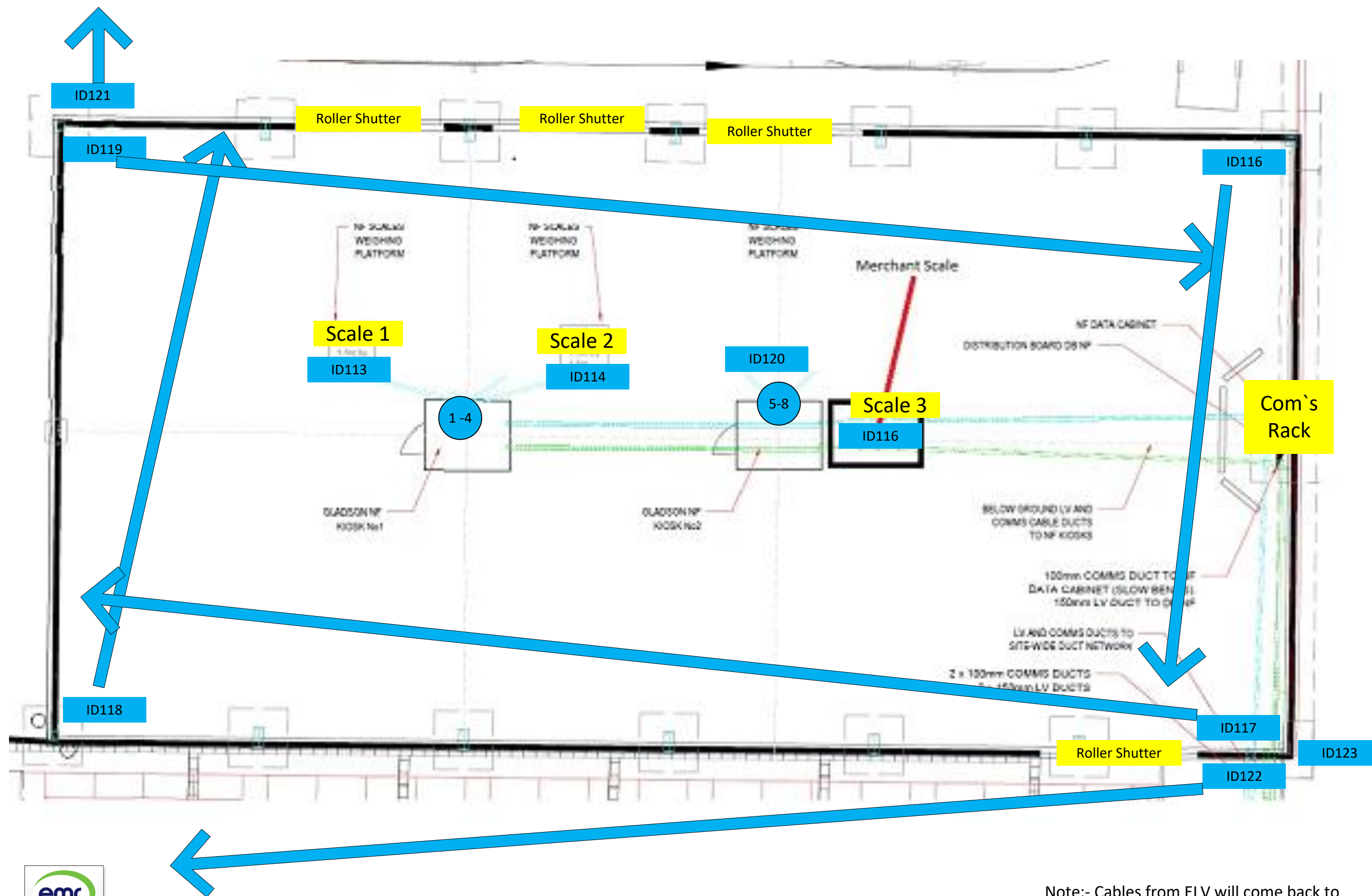
Note – 28/29 additional

| | | |
|---|---|-------------------------------------|
|  | <p>TITLE</p> <p>Silver Town</p> | <p>DRAWN BY</p> <p>Roger Hewitt</p> |
| <p>DESCRIPTION</p> <p>Main Admin Office Building</p> | <p>DATE</p> <p>6th February 2023</p> | |



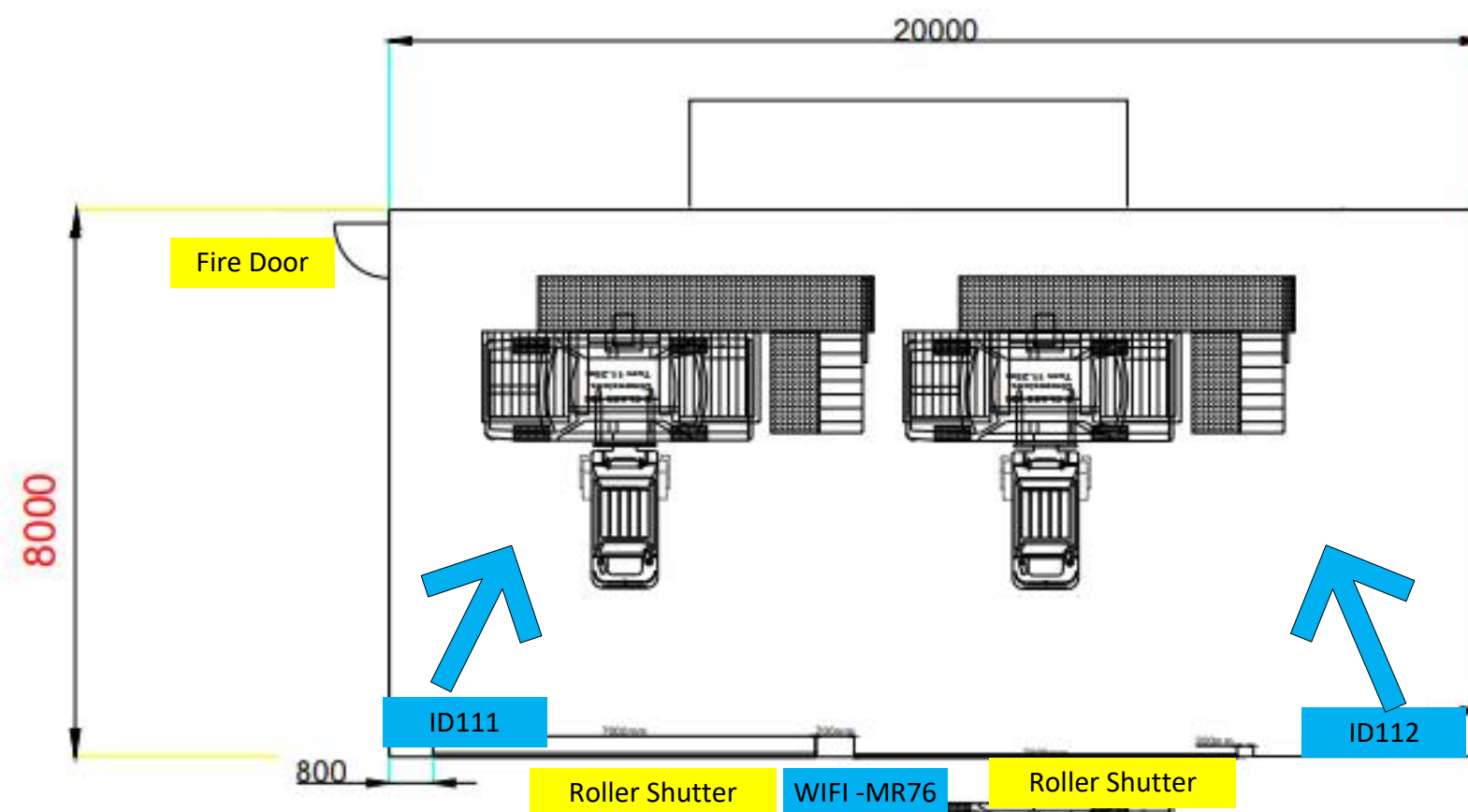
On top of the above Thermal cameras – The following Axis P3265LVE cameras will also act as security cameras Out of business house NF Building Inside – 116,117,118,119 ELV Building Inside – 111,112

| | |
|---|-------------------------------|
|  | |
| TITLE | DRAWN BY |
| Silver Town | Roger Hewitt |
| DESCRIPTION | DATE |
| Security - External | 4 th November 2022 |



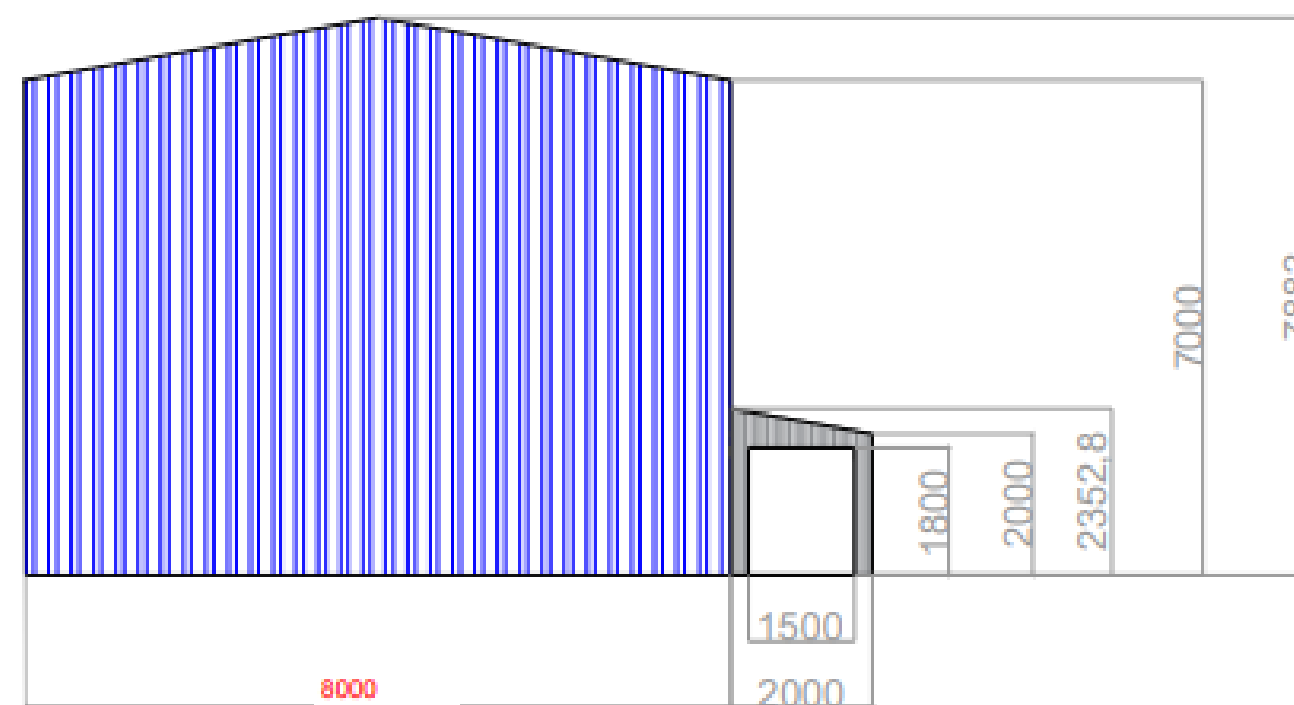
| | | | |
|-------------|-------------|----------|-------------------------------|
| TITLE | Silver Town | DRAWN BY | Roger Hewitt |
| DESCRIPTION | NF Building | DATE | 14 th October 2022 |

Note:- Cables from ELV will come back to the Building – Switch 2



Camera ID 111 Left of Picture
to cover Fire Door

Note :- At night Both roller shutters and Fire door
Locked and Closed
Cables from ELV to go back to NF switch 2



| | | | |
|-------------|--------------|----------|-------------------------------|
| TITLE | Silver Town | DRAWN BY | Roger Hewitt |
| DESCRIPTION | ELV Building | DATE | 14 th October 2022 |