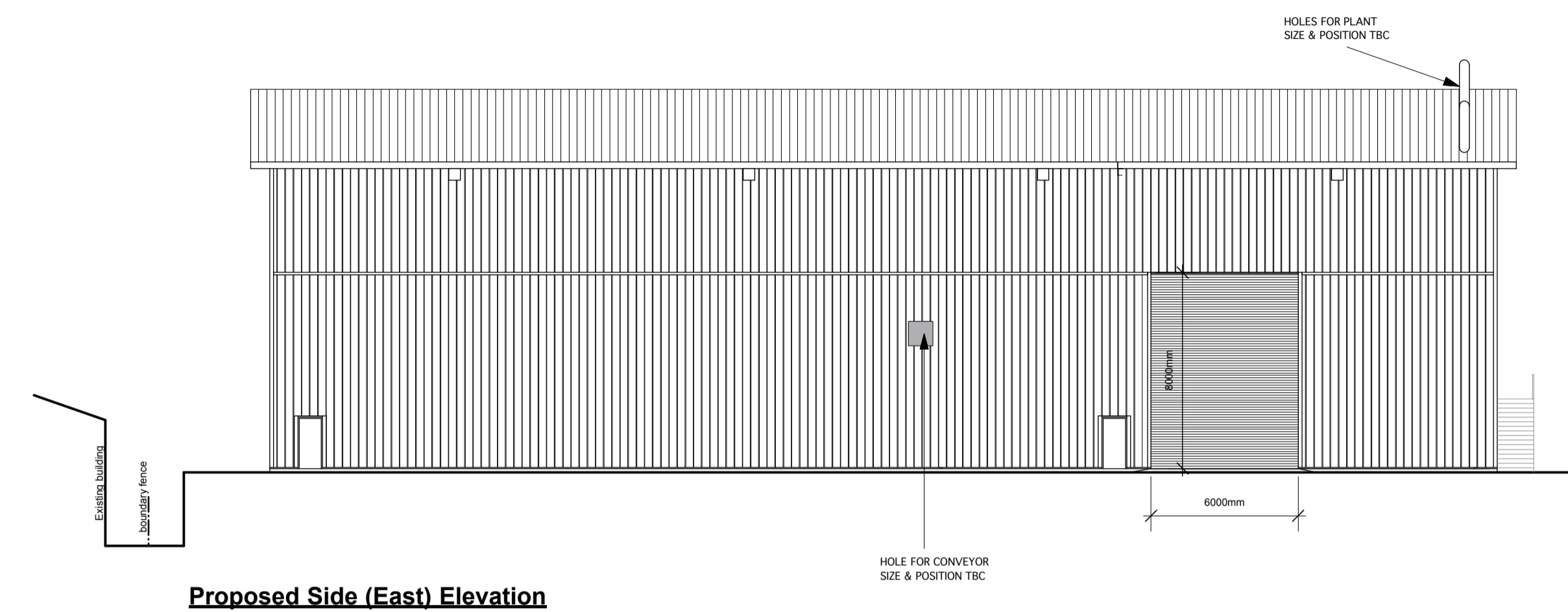
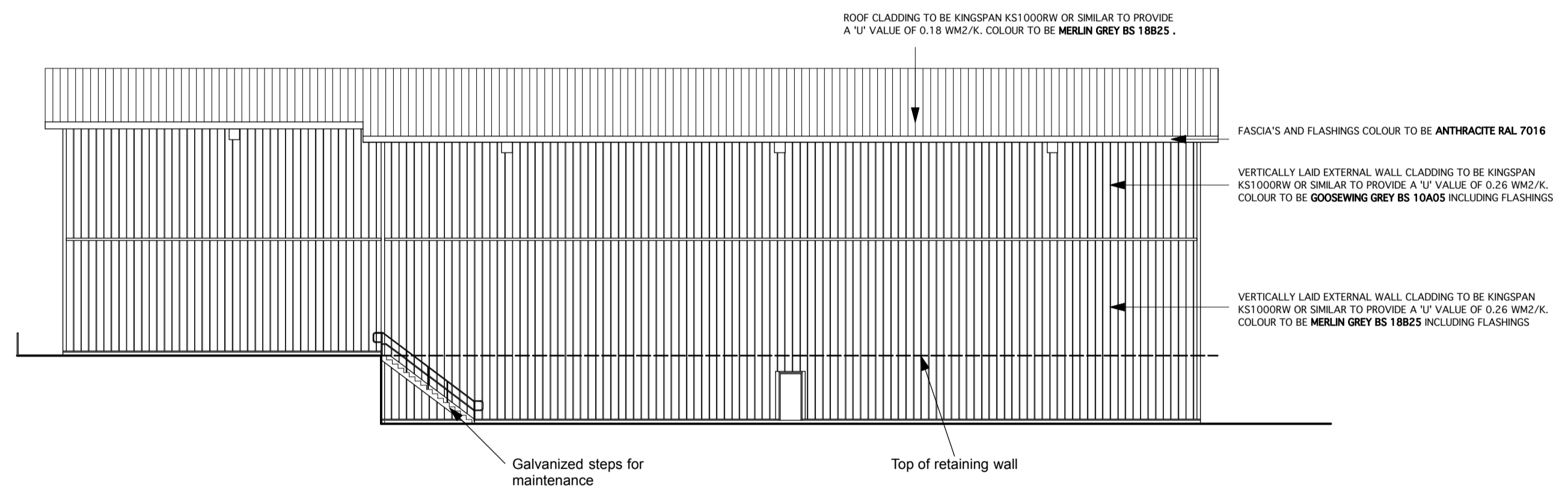


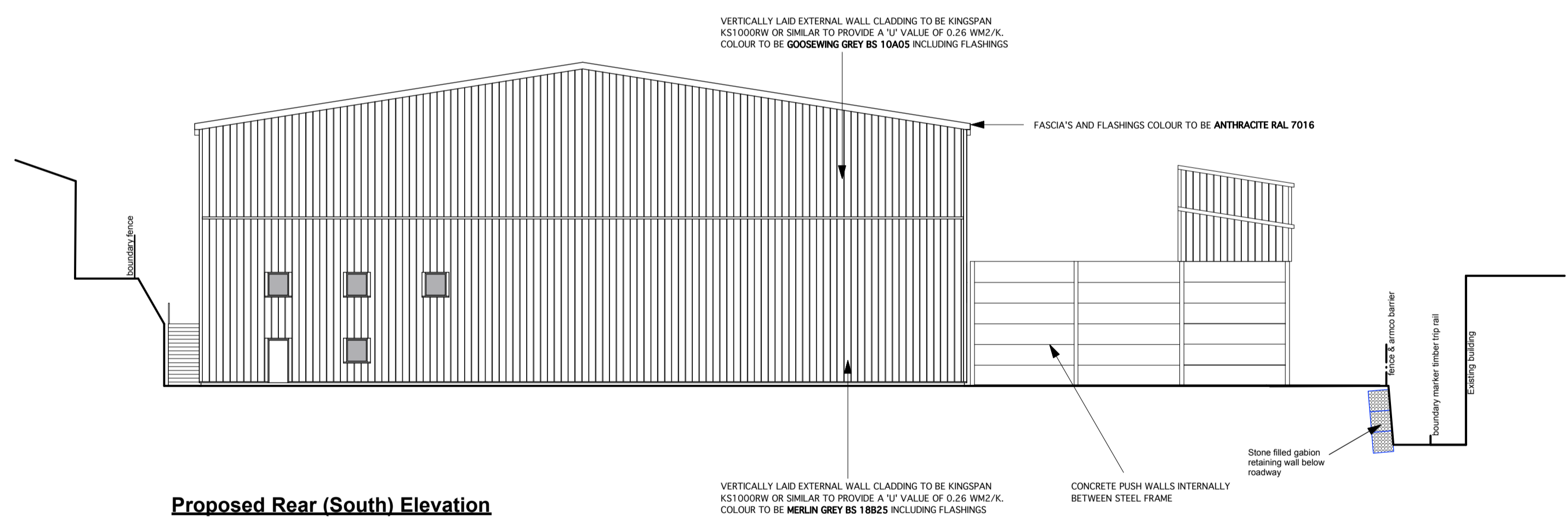
Proposed Front (North) Elevation



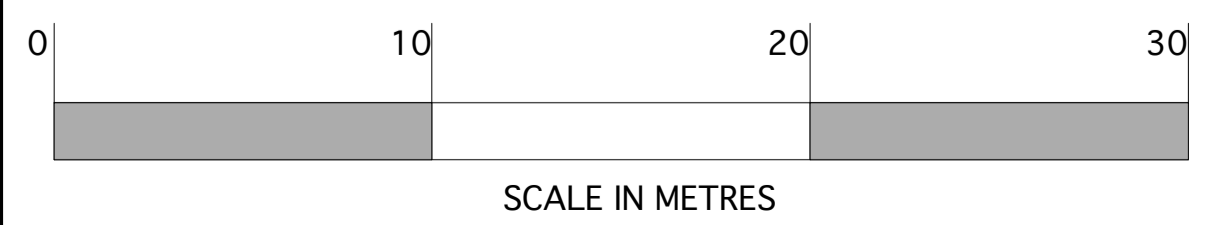
Proposed Side (East) Elevation



Proposed Side (West) Elevation



Proposed Rear (South) Elevation



C	14.09.20	B.W.J.	END OF COVERED BAY REDUCED
B	08.09.20	J.M.R.	RETAINING WALL AMENDED. WINDOWS ADDED. FE DOORS REPOSITIONED
A	24.08.20	J.M.R.	BUILDING REDUCED BY 1M. UPDATED TO SUIT SITE PLAN
INDEX	DATE	INITIAL	REVISION

D.P.S ARCHITECTS

DPS Architects Limited
Architects,
Project Managers,
Development Consultants
Cost Consultants

The Westlands
132 Compton Road,
Wolverhampton WV3 9QB.
Tel : (01902) 427067

CLIENT			
Dartmouth Global Trading Co. Ltd			
PROJECT			
Brewins Way, off Narrowboat Way, DY5 1UF			
DRAWING TITLE	DRAWN BY		
Proposed Elevations	J.M.R.		
SCALE	DATE	DRG. NO.	REVISION
1:200@A1	27.07.20	2172-204	C

TENDER DRAWING