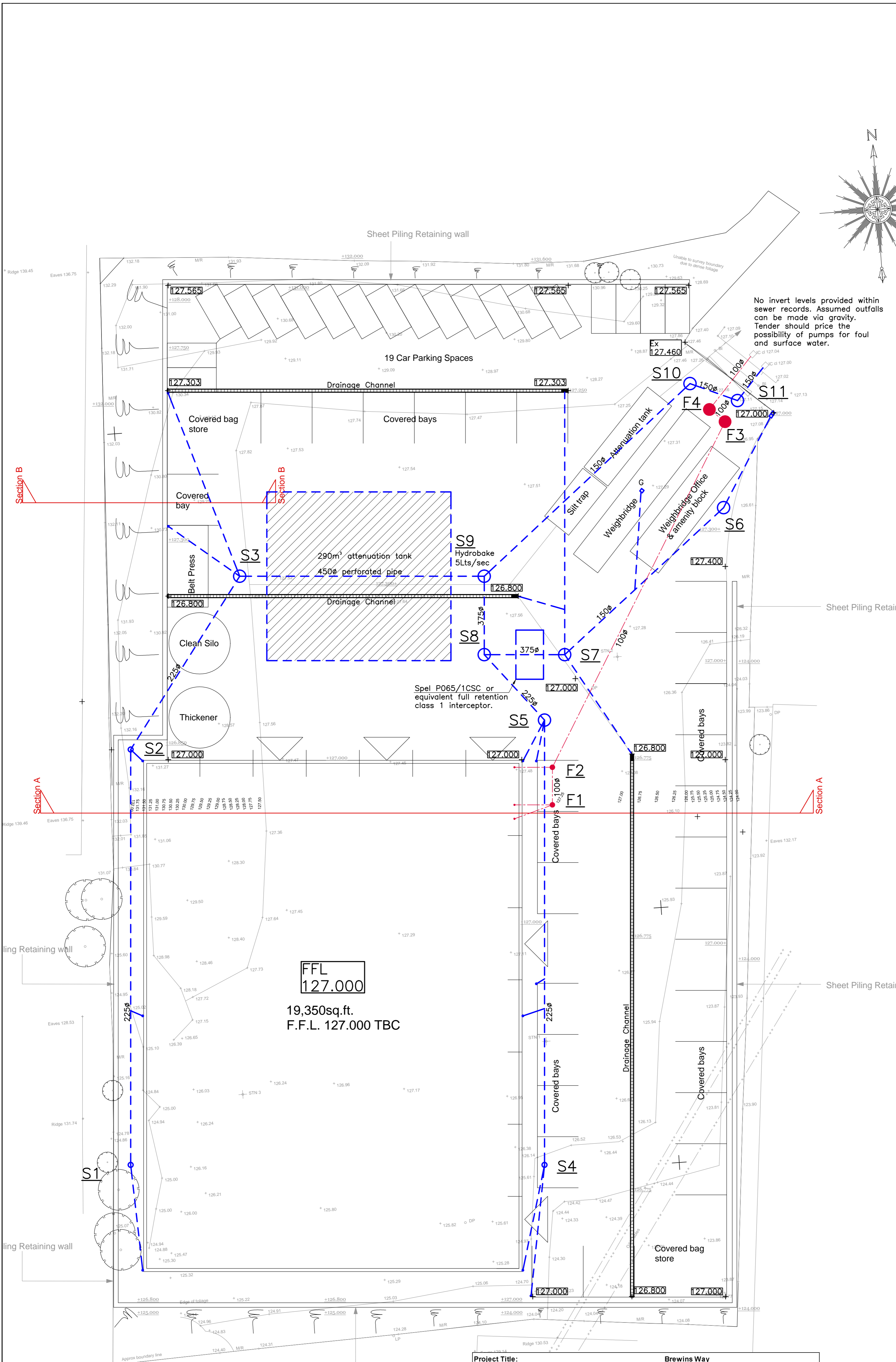


NOTES:

- This drawing is to be read in conjunction with all relevant Architect's, Engineer's, Specialists details and the Specification.
- All surface water pipes sizes as stated.
- All foul water pipes sizes as stated.
- All drainage pipes to BS EN 295 (clayware) or BS EN 1401 (plastic) U.N.O. Other materials may be permitted subject to the approval of the Engineer.
- Pipes to BS EN 295 with more than 900mm cover between pipe soffit and finished surface to be in Type 'B' bedding. Pipes to BS EN 1401 with more than 900mm between pipe soffit and finished surface to be in Type 'S' bedding.
- All pipes under external paved areas with less than 900mm cover to be in Type 'A5' bedding.
- All manholes, trenches, culverts etc to be backfilled with imported granular fill to Class 6F1 (capping material) compacted to a maximum of 95% of maximum dry density of BS.1377: Part 4 (Vibrating Hammer method).
- The Contractor is responsible for ensuring that full and adequate temporary works are provided to maintain safety and stability of the existing structure whilst the new works are being carried out. The propping is to remain in position until such time that the new works can adequately sustain the intended loads. Details of the proposed temporary works are to be forwarded to the Engineer for comment prior to commencement of works being carried out. Reference should also be made to Nolan Associates Standard detail - Pipes near buildings. (D22)
- Polypropylene Access Chambers (denoted A.C.) are to be no deeper than 600mm.
- Pipe Gradients:
Pipes are to be laid to the levels and gradients shown. Pipe branches are to be laid no flatter than the following table:

	100ø	150ø
Gullies, sinks and basins	1:40	1:40
Pipes draining 1 or more WC's	1:80	-
Pipes draining 5 or more WC's	1:80	1:150

- For Manhole covers see schedule.
- The Contractor is to enter into all necessary legal agreements with the drainage authority for all connections to the Public Sewer Network.
- The Contractor is to survey all drainage outfalls and determine the levels of any Utility Apparatus that might affect the levels of drainage connections, prior to commencing any drainage works on site.
- The Contractor is to obtain the consent of the Highway Authority to any works within the highway and enter into any necessary legal agreements.
- Rising main to be BS EN 13244-2, all joints electrofusion welded to provide continuous main.



Project Title: Brewins Way							
Project No.: 2019-227							
Foul Water							
M.H. No.	Cover level	Invert level	Size	Type	Largest pipe	Cover type	Notes
F1	126.950	125.850	475	PPIC	100	D400	
F2	126.950	125.813	475	PPIC	100	D400	
F3	127.150	125.300	1200	CR	100	D400	
F4	127.200	125.250	1200	CR	100	D400	

NOTES

- C.R. - Concrete ring manhole see std. detail D1 or D15.
- P.P.I.C - Polypropylene Inspection Chamber see std. detail D13
- A.C. - Plastic Access Chamber
- Tegra - Tegra Inspection Chamber see std. detail D49
- X - 600 sq. Medium duty recessed, air-tight, screw-down cover and frame eg Broadstel
- D400 - 600sq. Heavy duty, ductile iron, cover and frame to BS EN 124:D400
- C250 - 600sq. Medium duty, ductile iron, cover and frame to BS EN 124:C250
- B125 - 600sq. Light duty, ductile iron, cover and frame to BS EN 124:B125
- C - proprietary light duty cover and frame

Project Title: Brewins Way							
Project No.: 2019-227							
Surface Water							
M.H. No.	Cover level	Invert level	Size	Type	Largest pipe	Cover type	Notes
S1	126.900	125.600	1200	CR	225	D400	
S2	127.000	125.410	1200	CR	225	D400	
S3	126.850	125.140	1350	CRCP	450	D400	
S4	126.900	125.600	1200	CR	225	D400	
S5	127.000	125.410	1200	CR	225	D400	
S6	127.380	126.300	475	PPIC	150	D400	
S7	126.900	126.300	1350	CRCP	375	D400	
S8	126.900	125.202	1350	CRCP	375	D400	
S9	126.850	125.090	1350	CRCP	450	D400	Hydrobrake 5Lts/sec
S10	127.400	124.910	1200	CR	150	D400	
S11	127.100	124.835	1200	CR	150	D400	

NOTES

- C.R. - Concrete ring manhole see std. detail D1 or D15.
- CRCP - Concrete Ring Catchpit see std. detail D14
- P.P.I.C - Polypropylene Inspection Chamber see std. detail D13
- X - 600 sq. Medium duty recessed, air-tight, screw-down cover and frame eg Broadstel
- D400 - 600sq. Heavy duty, ductile iron, cover and frame to BS EN 124:D400
- C - proprietary light duty cover and frame

P1	Preliminary issue	MH	JJG	14.08.19
REV	DESCRIPTION	BY	CHKD	DATE

Brewins Way

Drainage Layout

NOLAN ASSOCIATES
CONSULTING CIVIL & STRUCTURAL ENGINEERS

54 HAGLEY ROAD, EDGBASTON, BIRMINGHAM B16 8PE
TEL: 0121-454 3099 FAX: 0121-454 3059
E-MAIL: enquiries@nolanassociates.co.uk

Drawn by	Date	Plot Date	Scale
JJG	06.08.19	06.08.19	1: 200@A1
Checked by	Project No	Dwg No	
JJG	2019-227	100	P1