

+ 95.00m
Stack

+ 49.50m
Boiler Pop Up Parapet

+ 43.10m
ACCs Top of Cladding

+ 37.10m
Bunker Parapet

+ 28.50m
Admin / Welfare Parapet

+ 22.00m
5th Flr Contrl Rm.

+ 18.00m
4th Flr Offices/Meeting

+ 14.00m
3rd Flr Offices/Meeting

+ 10.00m
2nd Flr Welfare

+ 6.00m
1st Flr Services/Welfare

+ 0.67m
Gatehouse

+ 16.00m
Tipping Hall Parapet

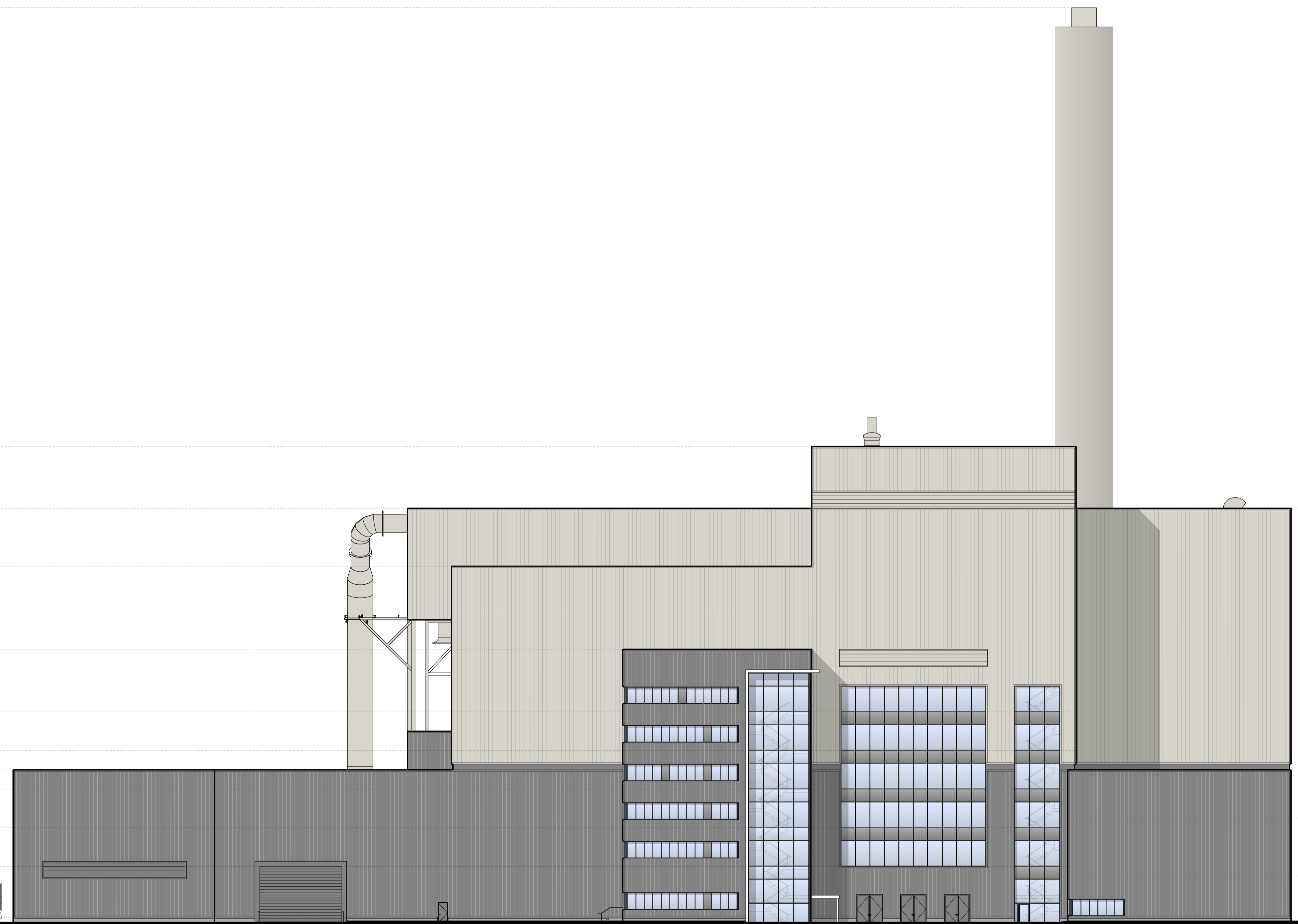
+ 0.00m (+7.25m AOD)
Site Level

+ 43.10m
FGT Parapet

+ 16.00m
Workshop Parapet

+ 11.00m
Plant Room

+ 5.00m
Parts Storage



NOTE

1. THIS DRAWING IS COPYRIGHT GSDA LTD.
2. THE CONTRACTOR MUST NOT SCALE FROM THE DRAWING ALL DIMENSIONS TO BE TAKEN FROM DIMENSION STRINGS.
3. WHERE ANY DISCREPANCIES ARE FOUND BETWEEN DIMENSIONS THESE MUST BE BROUGHT TO THE ATTENTION OF THE ARCHITECTS FOR RESOLUTION.
4. WHERE DISCREPANCIES EXIST BETWEEN REFERENCE OR ASSEMBLY DRAWINGS & DETAIL DRAWINGS, THE LATTER TAKE PREFERENCE.

PROJECT

DONCASTER EFW

DRAWING

Main Facility - South East Elevation

FOR PLANNING

- 20/05/29 Issued for Information

1:250@A1

20/05/29

SCALE

DATE

1388 PL302

-

DWG. NO.

REVISION

GSDA
GARRY STEWART DESIGN ASSOCIATES

Highlands House, Office 300A, 165 The Broadway, Wimbledon, London, SW19 1NE
T. 020 8544 8085