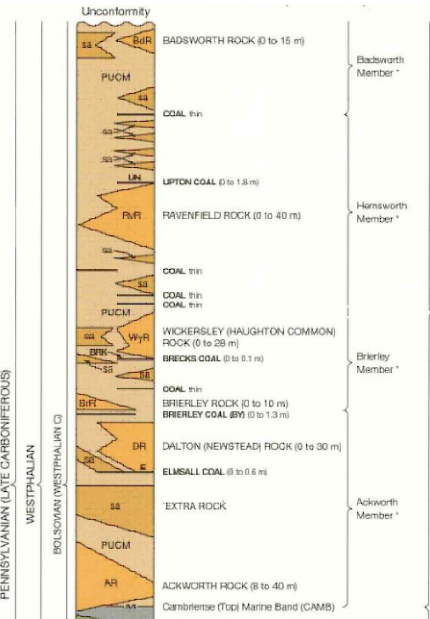
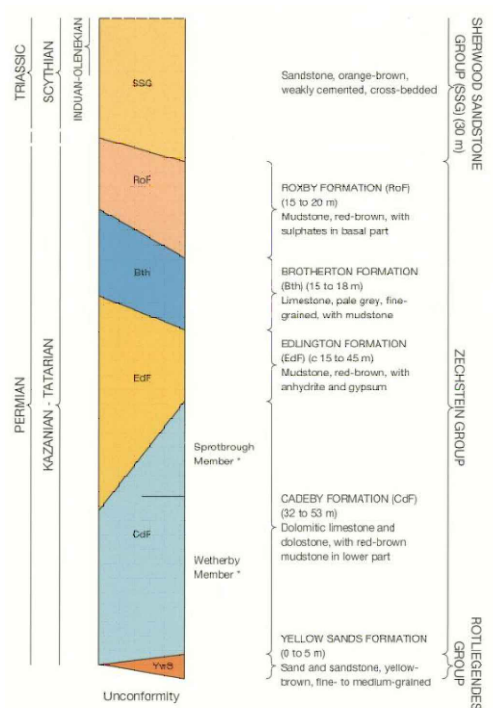


NOTES



THIS INFORMATION IS CONFIDENTIAL AND THE PROPERTY OF SIRIUS. IT IS RELEASED ON CONDITION THAT NONE OF THE INFORMATION SHALL BE DISCLOSED TO ANY THIRD PARTY OR REPRODUCED IN WHOLE OR PART WITHOUT THE PRIOR CONSENT IN WRITING OF SIRIUS.

Environmental Permit Boundary

ARTIFICIALLY MODIFIED GROUND

- Worked Ground: mainly quarries
- Made Ground: mainly colliery spoil and landfill
- Filled Ground: mainly restored opencast coal sites, brick pits and quarries

SUPERFICIAL DEPOSITS

- Landslide Deposits
- Head: rock fragments in a clay to sand matrix
- Peat
- Alluvium: silt, clay and sand with gravel and peat interbeds
- Alluvial Fan Deposits: sand and gravel
- First River Terrace Deposits: sand and gravel
- Second River Terrace Deposits: sand and gravel
- River Terrace Deposits, undifferentiated: sand and gravel
- Glaciolacustrine Deposits: silt and clay
- Glaciolacustrine Deposits: sand
- Lacustrine Shoreface and Beach Deposits: clay and silt
- Glaciofluvial Deposits: sand and gravel
- Tilt: clay to sand, unsorted, with common pebbles and cobbles

The Superficial Deposits listed above are not necessarily shown in order of superposition

Symbol indicates the Quaternary deposit at surface and the Bedrock formation at rockhead; other Quaternary deposits may intervene

For Bedrock symbols and colours see Generalized Vertical Sections

- Geological boundary, Artificially Modified Ground and Superficial Deposits
- Geological boundary, Bedrock
- Fault at rockhead, crossmark on downthrow side, throw in metres where known
- Fault with mineral vein Pb: Lead (galena)
- Coal or Ironstone outcrop, name on the younging-direction side of the outcrop
- Marine band
- Gently inclined strata
- Inclined strata, dip in degrees
- Inclined strata measured underground, in seam named, dip in degrees
- Generalized dip of inclined strata
- Borehole

Note: Key not drawn to scale

REV	DESCRIPTION	DATE	BY
-----	-------------	------	----

CLIENT

FCC Environment (UK) Limited
Ground Floor West, 900 Pavilion Drive, Northampton Business Park, Northampton, NN4 7RG

The Beacon Centre for Enterprise, Dafen, Llanelli, SA14 8LQ, 01554 780 544

JOB TITLE
ENVIRONMENTAL PERMIT VARIATION
APPLICATION - SKELBROOKE QUARRY
EXTENSION AREA

DRAWING TITLE
REGIONAL GEOLOGY

DRAWN	DATE	APPROVED	DATE
L.E.	11/3/2020	D.T	11/3/2020
SCALE	SHEET	DRAWING NUMBER	REVISION
1:20,000	A3L	WR640/10/ESSD6	0