

THIS INFORMATION IS CONFIDENTIAL AND THE PROPERTY OF SIRIUS. IT IS RELEASED ON CONDITION THAT NONE OF THE INFORMATION SHALL BE DISCLOSED TO ANY THIRD PARTY OR REPRODUCED IN WHOLE OR PART WITHOUT THE PRIOR CONSENT IN WRITING OF SIRIUS.

NOTES

Geology

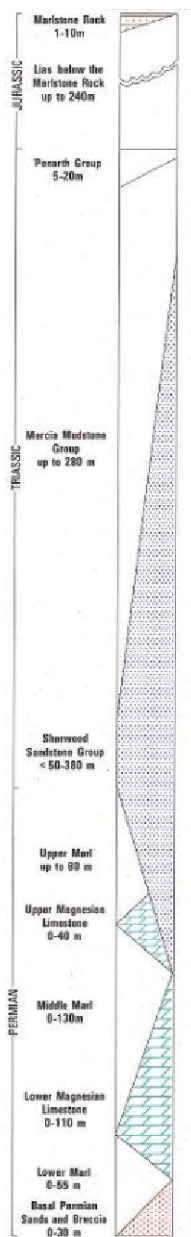
- Boundary between solid formations
- Drift boundary
- Solid boundary beneath drift, or combined solid and drift boundary
- Fault, arrow on downthrow side (conjectural in places)
- Contours on the base of the Sherwood Sandstone Group in metres relative to Ordnance Datum
- Isopachytes for the Sherwood Sandstone Group in metres
- Contours on the base of the Lower Magnesian Limestone in metres relative to Ordnance Datum

Surface Water Features

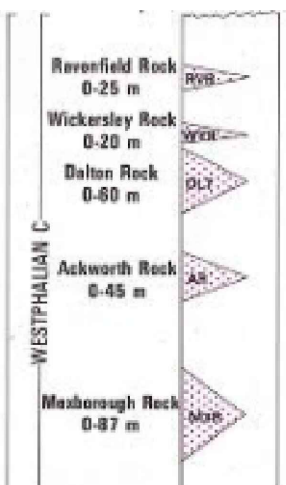
- Course of natural, or mainly natural, perennial river or stream
- Tidal reach of river
- Canal, irrigation or drainage channel
- Tidal reach of canal
- River gauging station, with long term mean discharge (where available) in cumecs (top) and surface water catchment in square kilometres (bottom)
- Hydrometric area boundary (mainly surface water divide)
- Spring (group of springs) from the Magnesian Limestone with a flow greater than 0.1 l/s in October 1977
- Spring (s) licensed to abstract <0.05 Mm<sup>3</sup>/a
- Spring (s) licensed to abstract ≥0.05 Mm<sup>3</sup>/a
- Lake, reservoir or standing water (with dam and capacity where ≥1 Mm<sup>3</sup>)
- Surface water intake for public supply, licensed to abstract more than 0.5 Mm<sup>3</sup>/a

Artificial Features

- Well or bore
- Group of wells or bores
- Overflowing artesian bore
- Bore from which water is abstracted for gravel washing
- Bore or shaft from which water is abstracted for mining purposes
- Public supply pumping station (includes private water undertakings)
- Quarry or gravel pit from which ground-water is abstracted (includes springs in gravel workings)
- Quarry or gravel pit from which ground-water is abstracted for gravel washing
- Principal trunk water supply pipeline
- Observation well measured manually
- Observation well with autographic recorder
- Mine drainage abstraction (≥0.05 Mm<sup>3</sup>/a) from bore or shaft discharged into surface water or sewer (pipeline and arrow omitted where discharge close to abstraction point)



RIVER SKELL



- Environmental Permit Boundary
- Licensed Abstractions
- Springs
- Private Water Abstraction

REV	DESCRIPTION	DATE	BY
-----	-------------	------	----

CLIENT

FCC Environment (UK) Limited  
Ground Floor West, 900 Pavilion Drive, Northampton Business Park, Northampton, NN4 7RG

The Beacon Centre for Enterprise, Dafen, Llanelli, SA14 8LQ, 01554 780 544

JOB TITLE  
ENVIRONMENTAL PERMIT VARIATION  
APPLICATION - SKELBROOKE QUARRY  
EXTENSION AREA

DRAWING TITLE  
HYDROGEOLOGY AND  
HYDROLOGY

DRAWN	DATE	APPROVED	DATE
L.E.	12/3/2020	D.T	12/3/2020
SCALE	SHEET	DRAWING NUMBER	REVISION
1:50,000	A3L	WR7640/10/ESSD7	0