

FOR MATCHLINE CONTINUATION SEE DRAWING NUMBER 36026

FOR MATCHLINE CONTINUATION SEE DRAWING NUMBER 36028

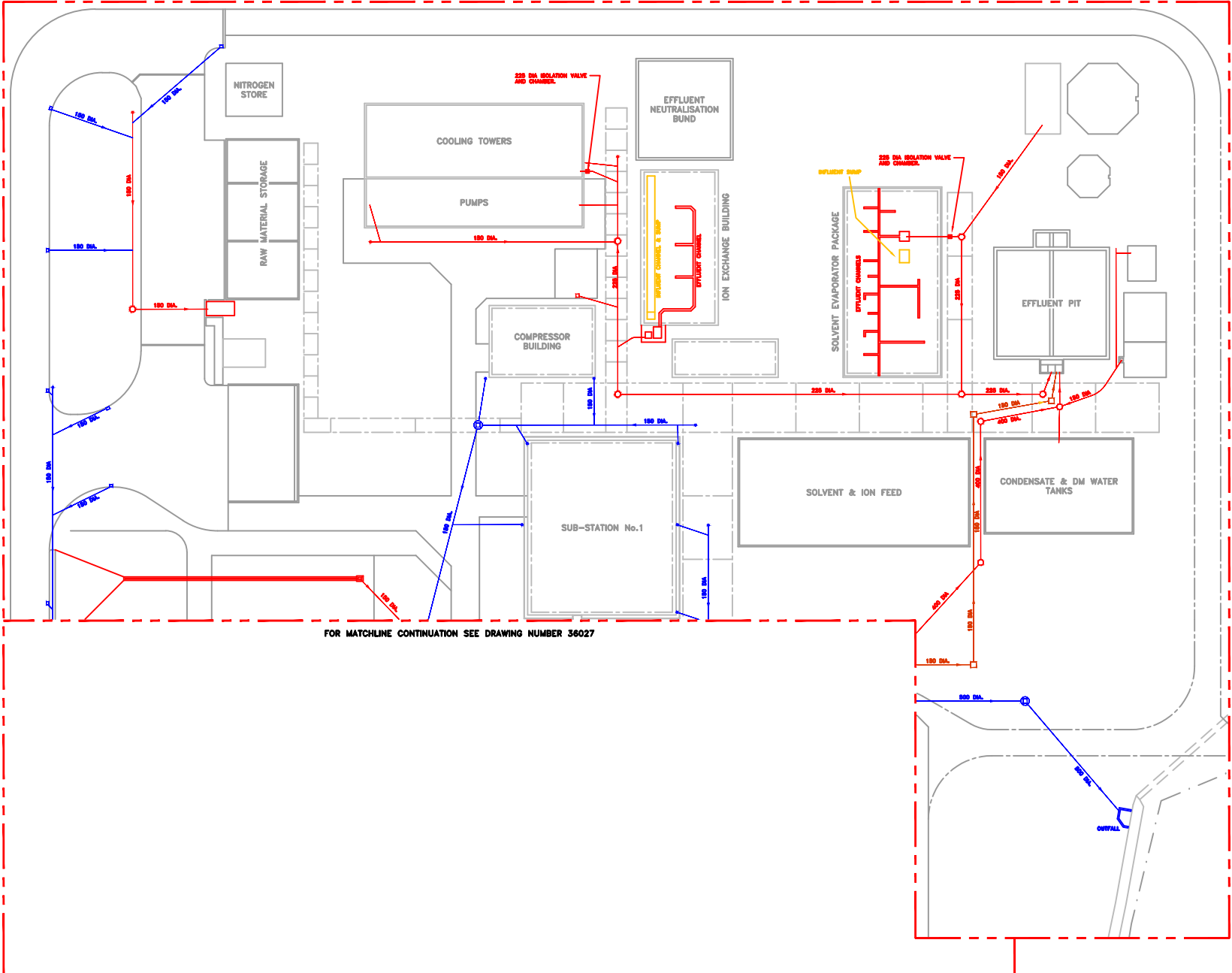
KEY

- FOLL DRAIN
- STORM
- INFLUENT
- EFFLUENT

EMERGENCY CONTROL REFERENCE DOCUMENT
 See This Drawing to Modified Based Two Option
 To The Department Manager

CONTROLLED DOCUMENT
 CHECKS SEE ENVIRONMENTAL
 SYSTEMS MANUAL (APPENDIX "I")
 THIS DRAWING (AND ANY MODIFICATIONS)
 MUST BE APPROVED BY THE
 RESPONSIBLE BUSINESS ENVIRONMENTAL
 ADVISOR.

**REDUCED COPY
 DO NOT SCALE**



KEY

- FOUL DRAIN
- STORM
- EFFLUENT
- EFFLUENT

FOR MATCHLINE CONTINUATION SEE DRAWING NUMBER 36027

EMERGENCY CONTROL REFERENCE DOCUMENT
 Each Time Drawing is Modified Issue Two Copies to Fire Department Manager

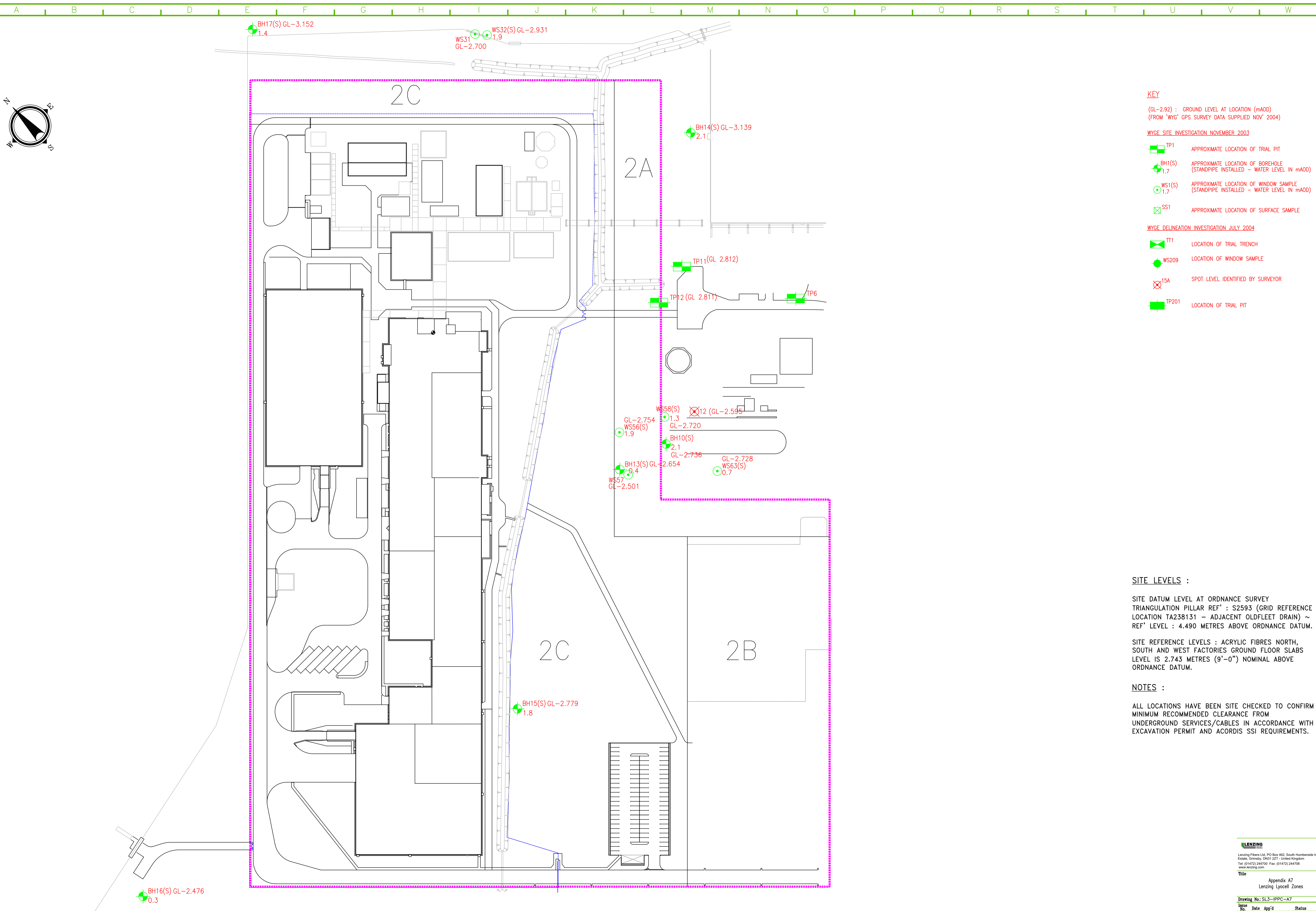
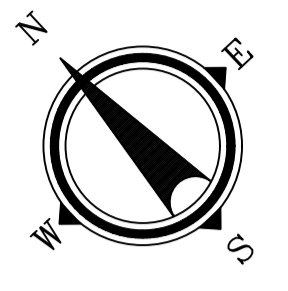
CONTROLLED DOCUMENT
 CHECK THE ENVIRONMENTAL SYSTEMS MANUAL (APPENDIX 1)
 THIS DRAWING (AND ANY MODIFICATIONS) MUST BE APPROVED BY THE PROFESSIONAL BUSINESS ENVIRONMENTAL ADVISOR.

REDUCED COPY
 DO NOT SCALE

WILKINSON
 Leasing Point Ltd, PO Box 452, South Harborne Industrial Estate, Coventry, CV31 2ZT, United Kingdom
 Tel: 01455 244720 Fax: 01455 244728
 www.wilkinson.com

**APPENDIX A4 FIG 3
 OFFSITE DRAINS**

Rev	Date	By	Check
1	12/08	Current	Current



- KEY**
- (GL-2.92) : GROUND LEVEL AT LOCATION (mAOD)
(FROM 'WYG' GPS SURVEY DATA SUPPLIED NOV' 2004)
 - WYGE SITE INVESTIGATION NOVEMBER 2003**
 - TP1 APPROXIMATE LOCATION OF TRIAL PIT
 - BH1(S) APPROXIMATE LOCATION OF BOREHOLE
(STANDPIPE INSTALLED - WATER LEVEL IN mAOD)
 - WS1(S) APPROXIMATE LOCATION OF WINDOW SAMPLE
(STANDPIPE INSTALLED - WATER LEVEL IN mAOD)
 - SS1 APPROXIMATE LOCATION OF SURFACE SAMPLE
 - WYGE DELINEATION INVESTIGATION JULY 2004**
 - TT1 LOCATION OF TRIAL TRENCH
 - WS209 LOCATION OF WINDOW SAMPLE
 - SS15A SPOT LEVEL IDENTIFIED BY SURVEYOR
 - TP201 LOCATION OF TRIAL PIT

SITE LEVELS :

SITE DATUM LEVEL AT ORDANCE SURVEY
TRIANGULATION PILLAR REF : S2593 (GRID REFERENCE
LOCATION TA238131 - ADJACENT OLDFLEET DRAIN) ~
REF' LEVEL : 4.490 METRES ABOVE ORDANCE DATUM.

SITE REFERENCE LEVELS : ACRYLIC FIBRES NORTH,
SOUTH AND WEST FACTORIES GROUND FLOOR SLABS
LEVEL IS 2.743 METRES (9'-0") NOMINAL ABOVE
ORDANCE DATUM.

NOTES :

ALL LOCATIONS HAVE BEEN SITE CHECKED TO CONFIRM
MINIMUM RECOMMENDED CLEARANCE FROM
UNDERGROUND SERVICES/CABLES IN ACCORDANCE WITH
EXCAVATION PERMIT AND ACORDIS SSI REQUIREMENTS.

LENZING
Lenzing Fibers Ltd, PO Box 462, South Humberside Industrial
Estate, Gurnsey, DN12 2ET, United Kingdom
Tel: (01472) 244700 Fax: (01472) 244708
www.lenzing.com

Title
Appendix A7
Lenzing Lyocell Zones

Drawing No:	SL3-IPPC-A7
Issue No:	1/02/06
Date App'd:	
Status:	Current
Drawn:	
Checked:	
Scale:	Sheet No. 1 of 1