

DO NOT SCALE

ELEVATION LEVELS BASED ON SITE DATUM OF 0.000m



HEALTH AND SAFETY GUIDANCE NOTES

RESIDUAL HEALTH AND SAFETY RISK  H01

- H01.
- H02.
- H03.
- H04.
- H05.

RESIDUAL ECOLOGICAL RISK  E01

- E01.
- E02.
- E03.
- E04.
- E05.

REFER TO THE PROJECT HAZARD SUMMARY SHEET FOR FURTHER DETAILS OF RESIDUAL RISKS

NOTES

1. THE DRAWING IS INTENDED AS A GUIDE ONLY TO REFLECT AQUABIO'S REQUIREMENTS.
2. ANY QUERIES SHOULD BE DIRECTED TO THE AQUABIO DESIGN OFFICE.
3. ALL LEVELS AND DIMENSIONS SHOWN ARE TO BE USED FOR GUIDANCE ONLY.
4. ALL DIMENSIONS ARE IN mm.
5. THE MECHANICAL INSTALLATION (M.I.) CONTRACTOR IS RESPONSIBLE FOR CONDUCTING THEIR OWN SITE SURVEY PRIOR TO FABRICATION, ASSESSING SITE CONDITIONS AND FABRICATING TO THEIR OWN MEASUREMENTS, CUTTING ALLOWANCE TO BE BUILT INTO PIPEWORK WHERE APPLICABLE AND FINAL LENGTHS TO BE DETERMINED ON SITE BY M.I. CONTRACTOR.
6. ANY PIPE SUPPORTS SHOWN ARE INTENDED AS A GUIDE ONLY. THE M.I. CONTRACTOR IS RESPONSIBLE FOR THE FINAL DESIGN, FABRICATION, QUANTITY & POSITIONING OF ALL SUPPORTS.
7. FLANGE POSITIONS ARE INDICATED FOR GUIDANCE ONLY - FINAL POSITIONS TO BE DETERMINED BY THE M.I. CONTRACTOR.
8. ALL PIPEWORK AND FABRICATIONS ARE TO BE SMOOTH AND FREE FROM BURRS.
9. ELECTRICAL INSTALLER TO UNDERTAKE SITE SURVEY PRIOR TO FABRICATION TO CONFIRM ACCESS ROUTES AND DESIGN FEASIBILITY.
10. CABLE/LADDER TRAY ROUTES ARE INDICATIVE ONLY. FINAL DESIGN AND ROUTE TO BE CONFIRMED BY ELECTRICAL INSTALLER ON-SITE FOLLOWING SITE SURVEY

PIPEWORK

ALL PIPEWORK TO BE SS 316 (UNLESS OTHERWISE NOTED)

GLASS COATED STEEL TANKS

EXTERNAL COLOUR: RAL6006 GREY OLIVE

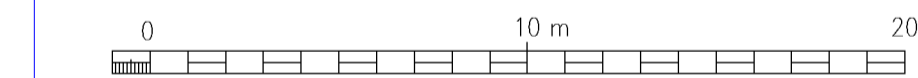
SPECIFICATION

REFER TO AQUABIO MECHANICAL INSTALLATION SPECIFICATION (M.I.S. REV 6)

HOLDS

1. AREA SHOWN IN CLOUD AS PROVISIONAL SUM IS SUBJECT TO CHANGE. FINAL DETAILS TO BE CONFIRMED.
2. ROAD DESIGN TO BE REVIEWED BY CIVILS AND SUITABILITY FOR VEHICULAR ACCESS, UNLOADING, LOADING AND EGRESS CONFIRMED. OVERALL SITE DIMENSIONS TO BE CONFIRMED IN LINE WITH THIS.
3. CHEMICAL DELIVERY AREA DESIGN TO BE CONFIRMED BY CIVILS.
4. EXISTING PIPE BRIDGE DETAILS TO BE CONFIRMED
- 5.

SCALE 1 : 200



FOR INFORMATION

Rev. No.	Revision Notes	Date	By	Approved
1	DESIGN ISSUE LATEST SUPPLIER INFORMATION ADDED	31/03/2023	AH	DT
0	DESIGN ISSUE LATEST SUPPLIER INFORMATION ADDED	13/03/2023	AH	DT

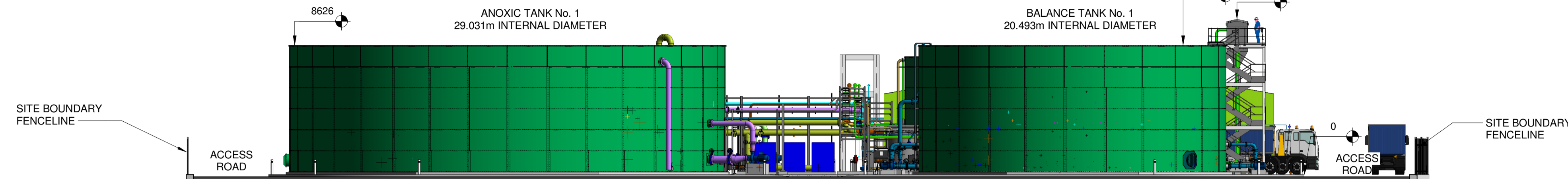
**Aquabio Limited**  
 Bail Mill Top Business Park, Hallow, Worcester, WR2 6LS  
 Aquabio Ltd is part of the Freudenberg Filtration Technology group of companies  
 Tel:- +44(0) 1905 641966  
 email:- info@aquabio.co.uk

This document contains proprietary information and is the property of Aquabio Ltd. It shall not be copied, reproduced, transmitted or communicated to third parties without explicit permission in writing, of Aquabio Ltd. Aquabio Ltd. Registered No. 3379754 England

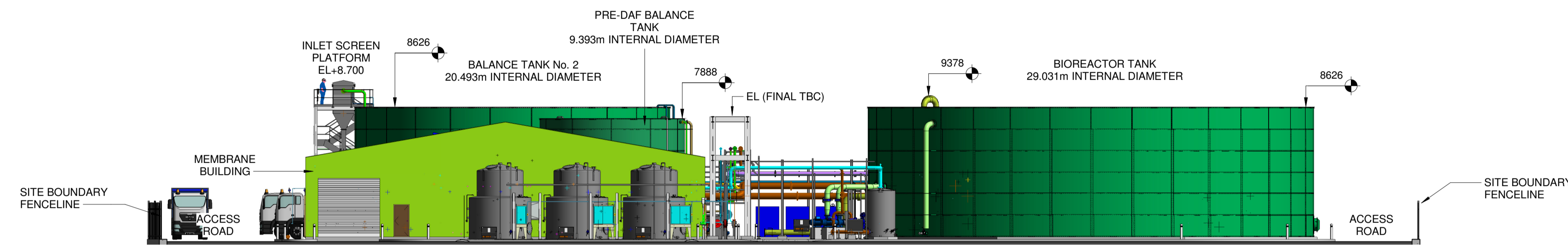
Client LENZING FIBRES, GRIMSBY

Title OVERALL SITE ELEVATIONS

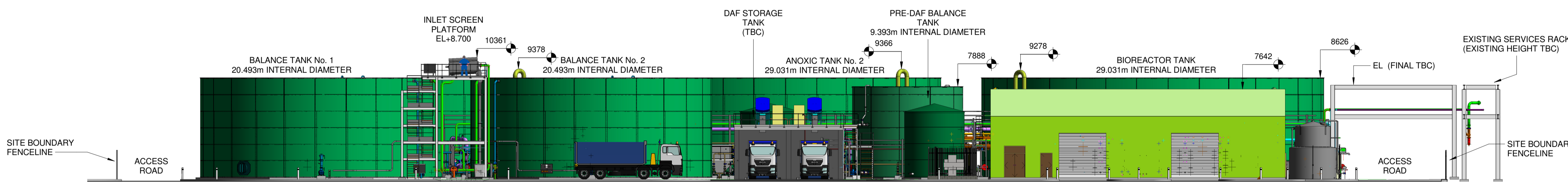
Model Number	Drawing No	Rev.	Sheet	Scale	A1
FEDERATED MODEL	J6285 - GA004	1		1 : 200	



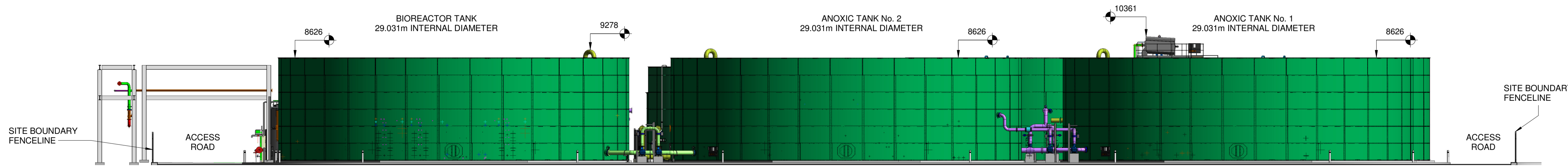
ELEVATION LOOKING TO SITE NORTH



ELEVATION LOOKING TO SITE SOUTH



ELEVATION LOOKING TO SITE WEST



ELEVATION LOOKING TO SITE EAST