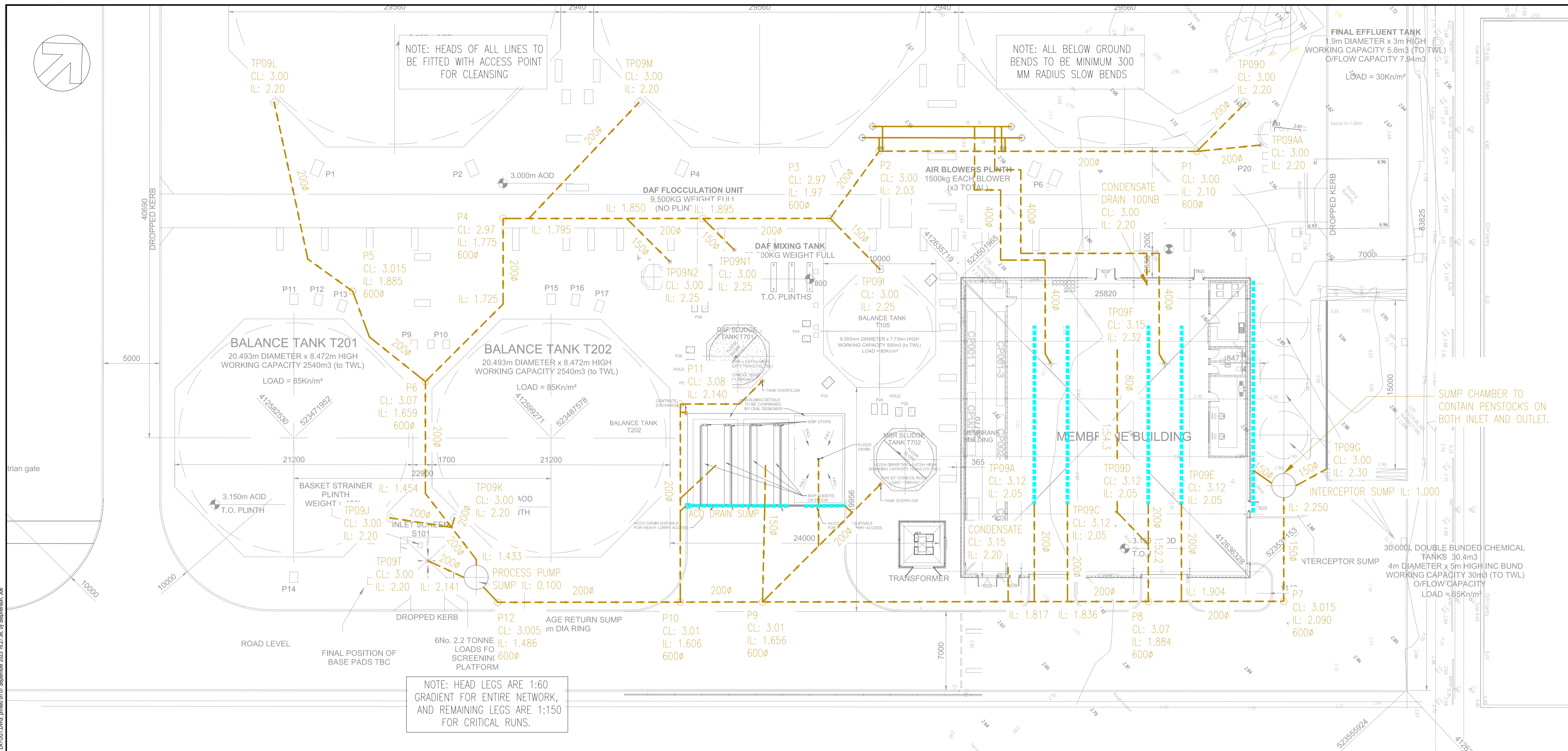


DO NOT SCALE

KEY:

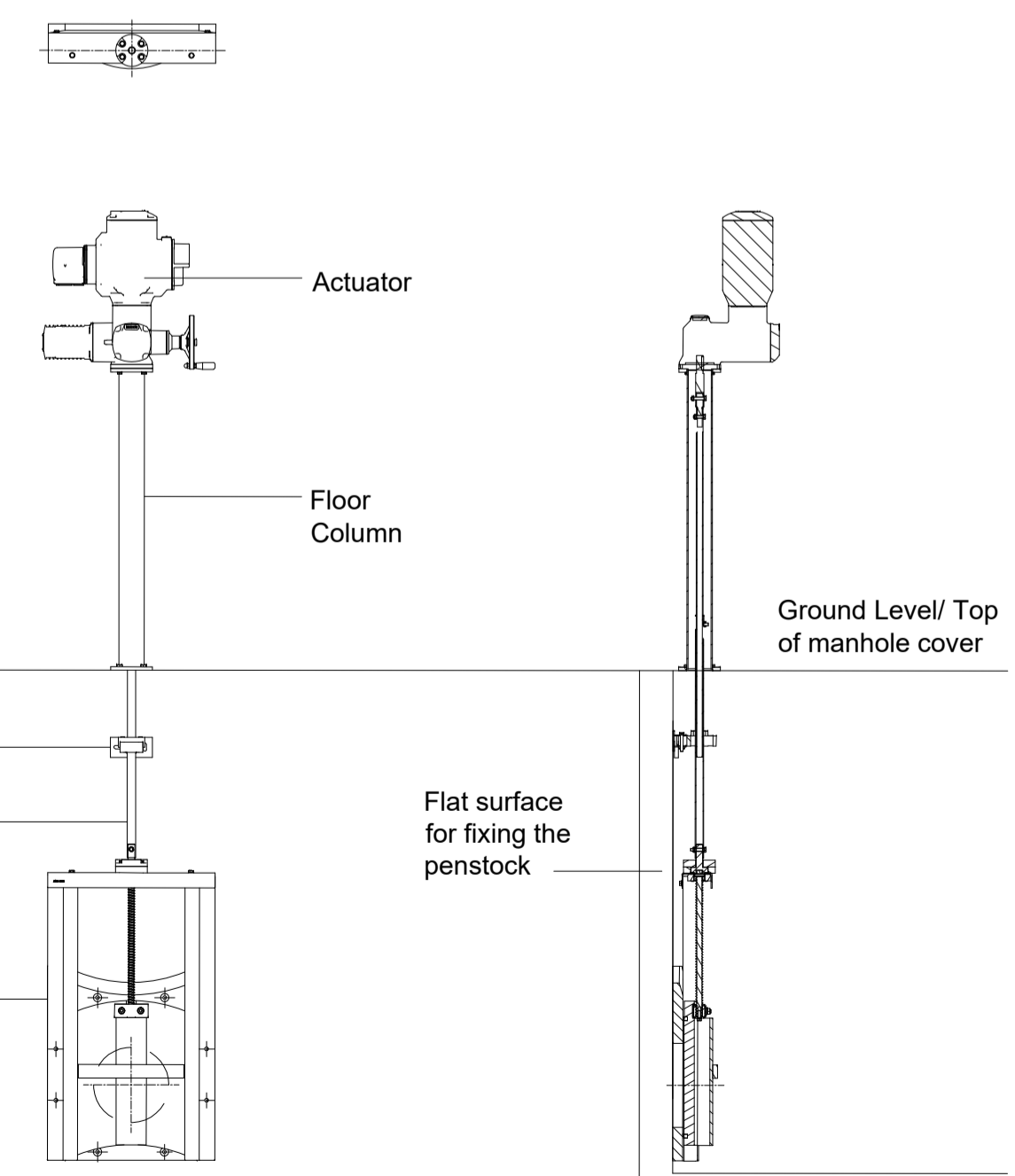
- - - - - PROPOSED PROCESS WATER PIPE
- - - - - PROPOSED S100 ACO DRAIN

1. PLEASE REFER TO DRAWING NUMBER 70096275-WSP-XX-XX-DG-CV-1360 FOR BUILDING POP-UP SETTING OUT INFORMATION.



Althon 150 HDPE/SS316 Penstock
Specification Information
Opening: Ø150mm
Standard supplied with a non-rising spindle.
It has an HDPE back plate.
EPDM lip seal between door and frame plate.
Supplied with neoprene seal between wall and frame plate.
Door made from HDPE and large penstocks will be reinforced with SS316 U-profiles.

Materials used: HDPE, SS316, EPDM, POM, Neoprene.
Max. load (on/off seating): 5 MWC from bottom invert level (B.I.L.)
Bare shaft: Ø20mm
All dimensions in mm.



150Ø PENSTOCK WITH ACTUATOR DETAIL
NOT TO SCALE

ALTHON PRA-G 150 HDPE/SS PENSTOCK SPECIFICATION INFORMATION

- THE PENSTOCK IS SUPPLIED WITH A NON-RISING SPINDLE AS STANDARD
- IT HAS AN OLG SPINDLE BEARING AND AN HDPE BACK PLATE
- IT HAS AN HDPE MOVING PLATE PROVIDED WITH RV3316L STIFFENERS WITH POM SPINDLE BLOCK
- THE MOUNTING MATERIAL AND THE SPINDLE ARE MADE OF SS316
- THE SEAL BETWEEN THE MOVING AND BACK PLATE CONSISTS OF AN INTEGRAL EPDM LIP SEAL, WHICH DOES NOT REQUIRE ANY ADJUSTMENT AFTER INSTALLATION

MATERIAL: HDPE, SS316, EPDM AND POM
MAX. LOAD (ON/OFF SEATING): 5 MWC FROM BOTTOM INVERT LEVEL (B.I.L.)
NUMBER OF CHEMICAL ANCHORS: M8 4PCS
NUMBER OF COUNTERSUNK HEAD SCREWS: M10 4PCS
BARE SHAFT: Ø20MM
CONICAL SQUARE SOCKET REMOVED WHEN USING SPINDLE EXTENSION
ALL DIMENSIONS IN MM

REV	DATE	BY	DESCRIPTION	CHK	APP
C03	07/09/2023	JS	CONSTRUCTION ISSUE	MD	IP
C02	25/07/2023	JS	CONSTRUCTION ISSUE	MD	IP
C01	28/06/2023	JS	CONSTRUCTION ISSUE	NM	IP
P01	01/06/2023	MH	TENDER ISSUE	NM	IP

DRAWING STATUS: **A - FIT FOR CONSTRUCTION**

Amber Court, William Armstrong Drive, Newcastle upon Tyne, NE4 7YQ, UK
T+ 44 (0) 191 226 2000, F+ 44 (0) 191 226 2104
wsp.com

CLIENT: **LENZING FIBERS GRIMSBY**

SITE/PROJECT: **WASTE WATER TREATMENT PLANT**

TITLE: **BELOW GROUND PROCESS DRAINAGE LAYOUT**

SCALE @ A1:	CHECKED:	APPROVED:
1:500	NM	IP

PROJECT NO:	DESIGNED:	DRAWN:	DATE:
70096275	MH	MH	22/08/2023

DRAWING NO:	REV:
70096275-WSP-XX-XX-DG-CV-1360	C03

© WSP UK Ltd

File name: \\UK.VSP.GROUP\CENTRAL_DATA\PROJECTS\70096275\WSP-XX-XX-DG-CV-1360\PROCESS_DRAINAGE_LAYOUT\DWG_01 September 2023 16:27:38, by: Stephanie.be