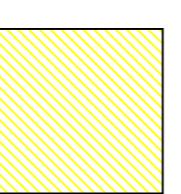


- Notes:**
1. This drawing is to be read in conjunction with all relevant Architects and Engineers Drawings.
  2. It is assumed that all works will be carried out by a competent contractor working, where appropriate, to an approved method statement.

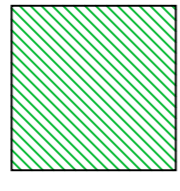
Catchment area draining to this point = 16934m<sup>2</sup>  
Peak flows attenuated to 90L/sec on a 1in100 year storm with 30% allowance for climate change  
Connection into 525mm SW sewer



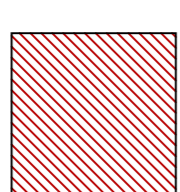
Catchment area draining to this point = 3537m<sup>2</sup>  
Peak flows attenuated to 9.1L/sec on a 1in100 year storm with 20% allowance for climate change  
Connection into 375mm SW sewer



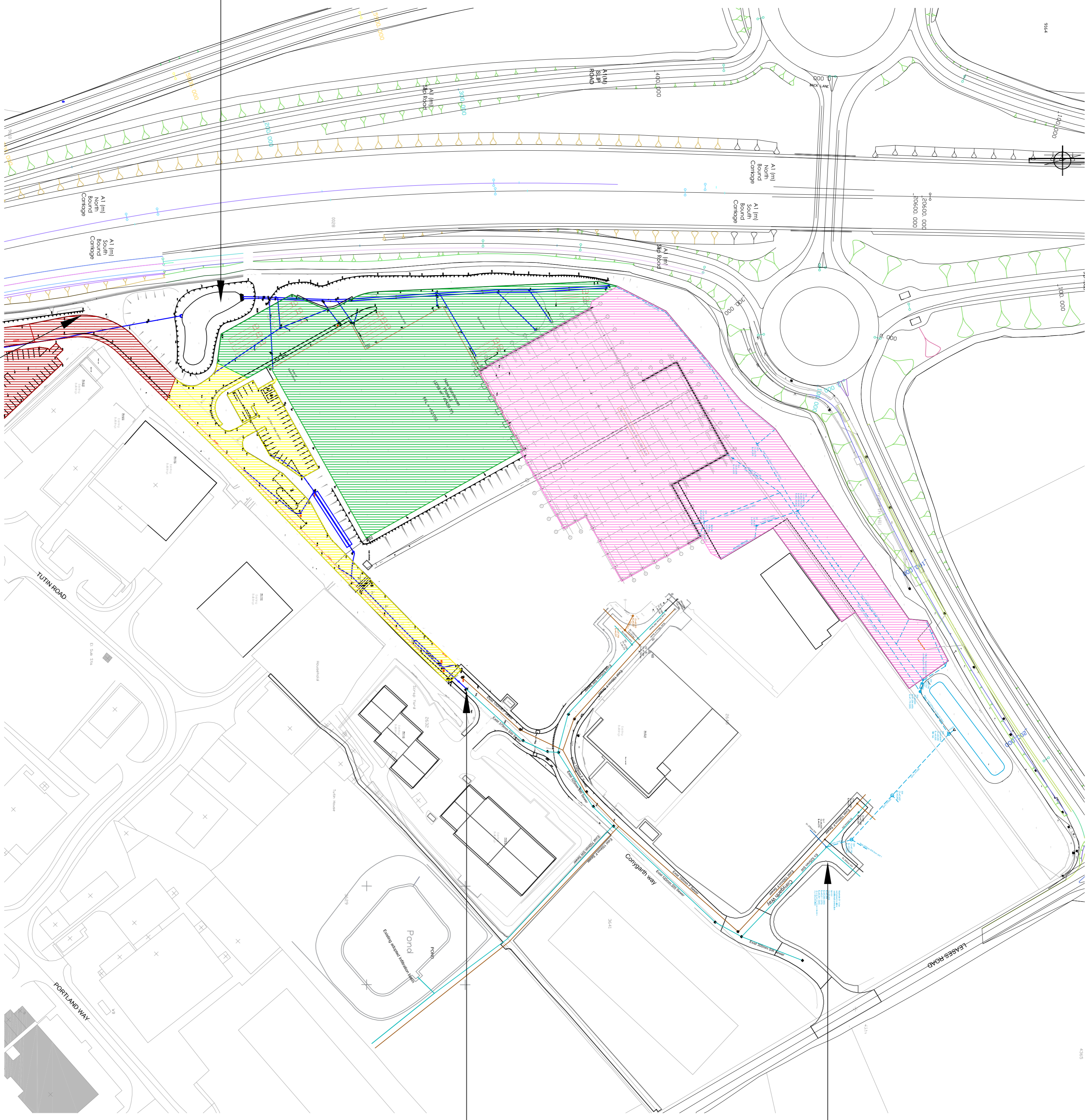
Catchment area draining to top infiltration pond with overflow into bottom infiltration pond = 12889m<sup>2</sup>  
No flows from site



Catchment area draining to soakaway in lower car park area  
No flows from site



Site Plan (1:1250 at A1)



**Client**  
Caw Ingredients  
Northern Development

**Project**  
Northern Development

**Drawing title**  
Catchments Ares and Flows into Adopted Sewers In Conygarth Way

|              |       |         |      |          |          |       |      |              |
|--------------|-------|---------|------|----------|----------|-------|------|--------------|
| Drawn        | PG    | Chkd    | DF   | Date     | Feb 2020 | Scale | (A1) | 1:1250 at A1 |
| Contract No. | 18369 | Dwg No. | C-70 | Revision |          |       |      |              |

**TOPPING ENGINEERS**  
Structural Engineers  
Aire House, 12 Victoria Avenue  
Harrrogate, HG1 1ED  
T: 01433 522 255  
E: info@topping-engineers.com