

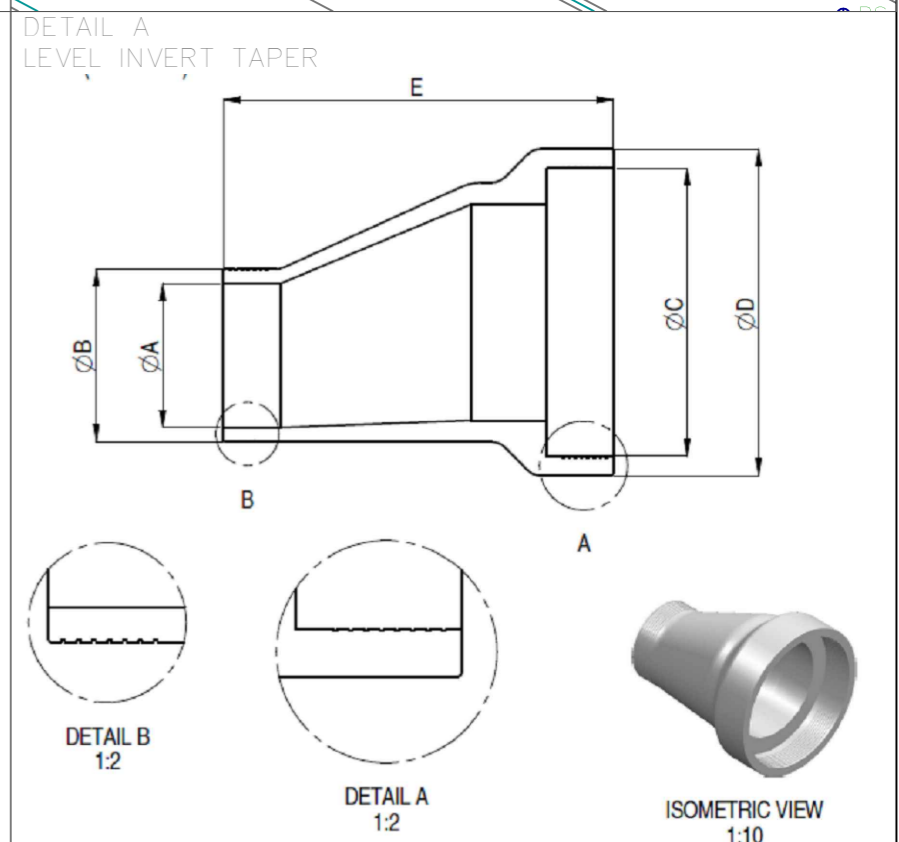
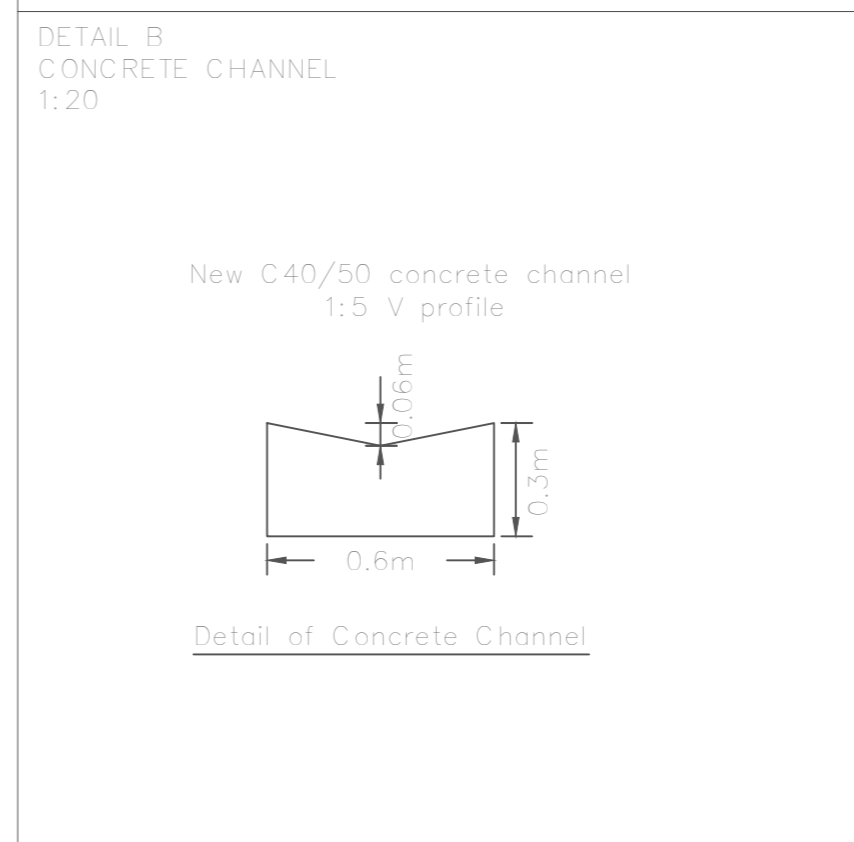
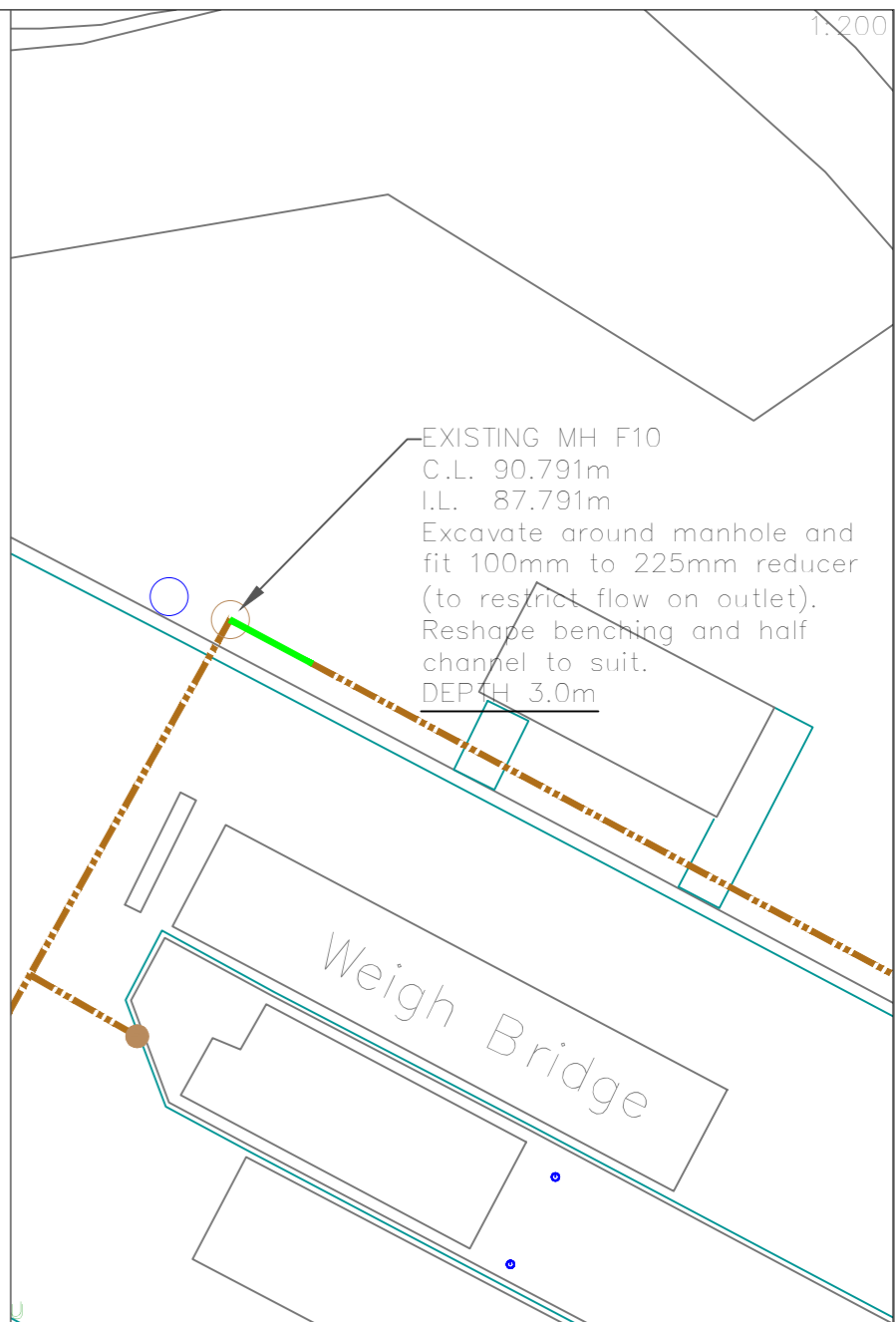
**KEY**

- Existing foul sewer
- Proposed pipework (brown twin wall)
- 225mm to 100mm Reducer Code No. KRT 3/2 (Detail A) <http://www.knowledrainage.co.uk>
- PCC 125 x 255 half batter to drawing no. HMS/11/01
- 150mmØ connection to main unless stated different
- Concrete channel - Detail B
- Road gully to detail HMS/05/05
- Chamber to HMS/05/11 with 600x600 grated cover
- Proposed manhole 1500mmØ to drawing no. HMS/05/12
- Orifice Plate on MH
- Existing manhole

**Note:**

Pipe bedding surround 150mmØ pipe to be 150mm thick with A10 aggregate.

Pipe bedding surround 675mmØ pipe to be 150mm thick with A20 aggregate.



CODE No.	A	B	C	D	E	WEIGHT (Kg)
KRT3/1	100	135	220	185		7.50
KRT3/2	100	135	300	340		12.50
KRT3/3	150	185	300	340	410	13.20
KRT3/5	150	185	383	440		41.35
KRT3/6	225	270	383	440		43.35
KRT3/9	225	270	475	545		54.00
KRT3/10	300	350	475	545		56.20
KRT3/13	225	270	595	680		81.10
KRT3/14	300	350	595	680		87.80
KRT3/15	375	450	595	680		96.20

Rev/Amdt	Drawn By		Approved By			Descriptor Of Amendments
	Name	Date	Name	Date	Sgn	
	D.Taylor	10.04.14				
B	D.Taylor	29.04.14				

PATH:

**Durham County Council**

Spennymoor Office  
Drainage & Coastal Protection Team

Terry Collins  
Corporate Director  
Neighbourhood Services  
County Hall, Durham  
DH1 5UQ

Project  
Heighington Ln. Waste Transfer Site

Drawing  
Drainage Layout

Scales  
1:250 @ A2

Project/Drawing No.

Rev. B

Reproduced from Ordnance Survey material with the permission of Ordnance Survey on behalf of the Controller of Her Majesty's Stationery Office © Crown copyright. Unauthorised reproduction infringes Crown copyright and may lead to prosecution or civil proceedings. Durham County Council. LA 100049055. 2012.