

KEY PLANT ITEMS

- 1 RK CARBONISATION FURNACE
- 48 NEW RK CARBONISATION FURNACE
- 2 ABATEMENT PLANT (LESNI) (new unit)
- 3 No.17 PIT FURNACE (removed)
- 4 RAPID CARBON FURNACE (removed)
- 5 No.10 FURNACE
- 6 No.9 FURNACE
- 7 No.11 FURNACE
- 8 No.12 FURNACE
- 9 No.13 FURNACE
- 10 No.14 FURNACE
- 11 HEATING COIL (13 OFF)
- 12 No.4 BOILER
- 13 No.2 BOILER
- 14 No.1 BOILER
- 15 No.3 BOILER
- 16 PUMPHOUSE
- 17 CUTTING & LAYING UP CLOTH AREA
- 18 HEAT TREATMENT - OLD FACILITY
- 19 HEAT TREATMENT - NEW FACILITY
- 20 CLOTH CELL EXTRACTION
- 21 DCE UNICELL FILTER DUST COLLECTOR
- 22 DCE UNICELL FILTER DUST COLLECTOR
- 23 DCE UNICELL FILTER DUST COLLECTOR
- 24 HEAT TREATMENT - OLD FACILITY EXTRACTION SYSTEMS (2-OFF)
- 25 HEAT TREATMENT - NEW FACILITY EXTRACTION SYSTEMS (2-OFF)
- 26 RK CARBONISATION - OLD INCINERATOR
- 27 RK CARBONISATION HOOD EXTRACTION
- 42 NU-CARB FURNACE 51
- 43 NU-CARB FURNACE 52
- 44 NU-CARB FURNACE 53
- 45 NU-CARB FURNACE 54
- 46 SECO OVEN
- 47 NEW RK CARBONISATION HOOD EXTRACTION

SUB STATIONS & TRANSFORMERS

- 28 SUB STATION 20
- 29 TRANSFORMER COMPOUND
- 30 TRANSFORMERS
- 31 TRANSFORMER No. 11 FURNACE
- 32 TRANSFORMER No. 14 FURNACE
- 33 SUB STATION 20A
- 34 TRANSFORMER COMPOUND (No.12 & No.13 FURNACES)
- 49 TRANSFORMER COMPOUND FOR NU-CARB

COOLING TOWERS

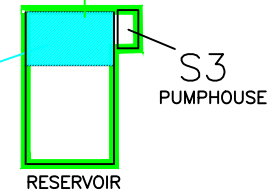
- 35 COOLING TOWER (No.14 FURNACE)
- 36 COOLING TOWER (No.12 FURNACE)
- 37 COOLING TOWER (No.13 FURNACE)
- 38 COOLING TOWER (No.11 FURNACE)
- 39 COOLING TOWER (No.9 & 10 FURNACES)
- 50 NEW COOLING SYSTEM CVD
- 51 COOLING PLANT FURNACES 51,52,53,54.
- 52 COOLING TOWER FURNACES 51,52,53,54.

ADDITIONAL PLANT

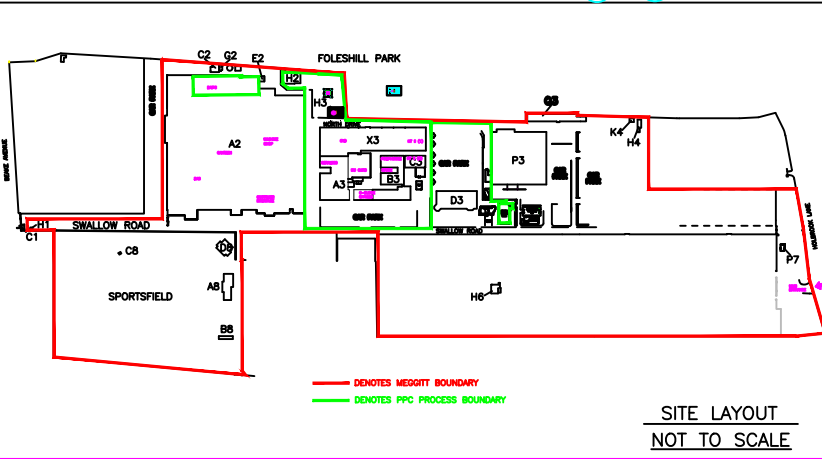
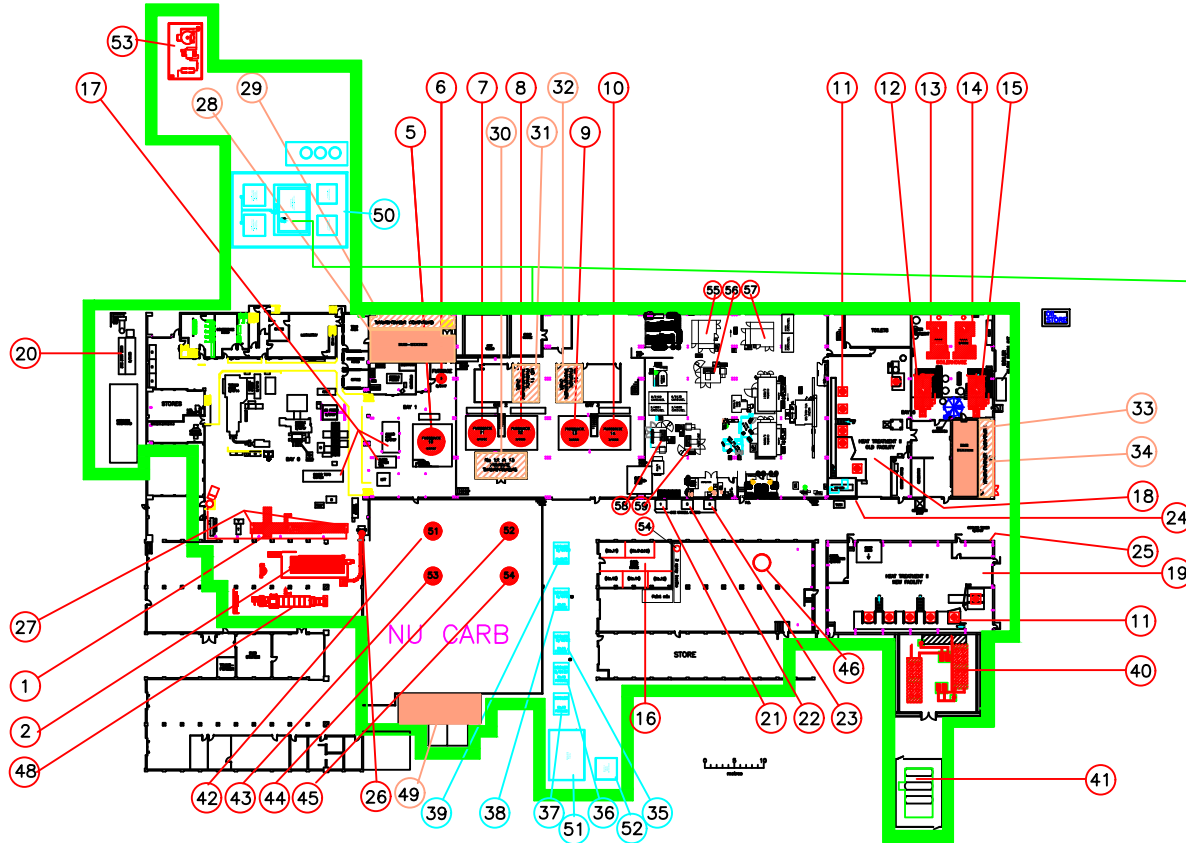
- 40 Cooling system HT. Plant
- 41 Propane Dosing Storage Tanks.
- 53 LNG PLANT & TANK
- 54 Spray booths extraction point
- 55,56,57 CNC M/C dust collectors
- 58,59 CNC M/C dust collectors

COOLING WATER PIPEWORK BETWEEN STEAM TOWERS AND COOLING TOWERS

COOLING TOWERS OVER RESERVOIR



— DENOTES PPC PROCESS BOUNDARY



SITE LAYOUT  
NOT TO SCALE

ISSUE	DATE	DRAWN	CHECKED	MODIFICATION	OPERATIONS DIRECTOR	MANAGER C.V.D.	TEAM LEADER C.V.D.	MANAGER AUXILIARY	MANAGER SITE FACILITIES	SAFETY & ENH. OFFICER	CHIEF OF SECURITY
4	JAN 20	RIP		Updated, Nu-carb, new Lesni, 2nd RK furnace							
3	FEB 11	RP									
2	MAY 06	AJ									
1	FEB. 06	AJ									

TITLE

MAIN PLANT ITEMS IN PPC BOUNDARY (CVD)

DRG.No.

WE 3260/B