

KEY

- F1 - COMPRESSOR HOUSE
- A2 - MANUFACTURING FACILITY
- A8 - SOCIAL CLUB
- C2 - COMPRESSOR HOUSE
- G2 - BLAST CHAMBER
- H2 - WASTE COMPOUND
- A3 - MANUFACTURING OFFICES
- B3 - OFFICES
- C3 - HT II (FACILITY 2)
- D3 - OFFICES
- P3 - MEGGITT CONTROL SYSTEMS
- Q3 - MEDICAL CENTRE
- H4 - GAS METER HOUSE
- H6 - LEASED BUILDING
- K4 - STORM WATER INTERCEPTOR
- P3 - MEGGITT CONTROL SYSTEMS
- P7 - SECURITY BUILDING
- S3 - PUMPHOUSE
- T3 - FIRESTATION
- X3 - CVD
- H3 - PROPOSED COOLING TOWERS

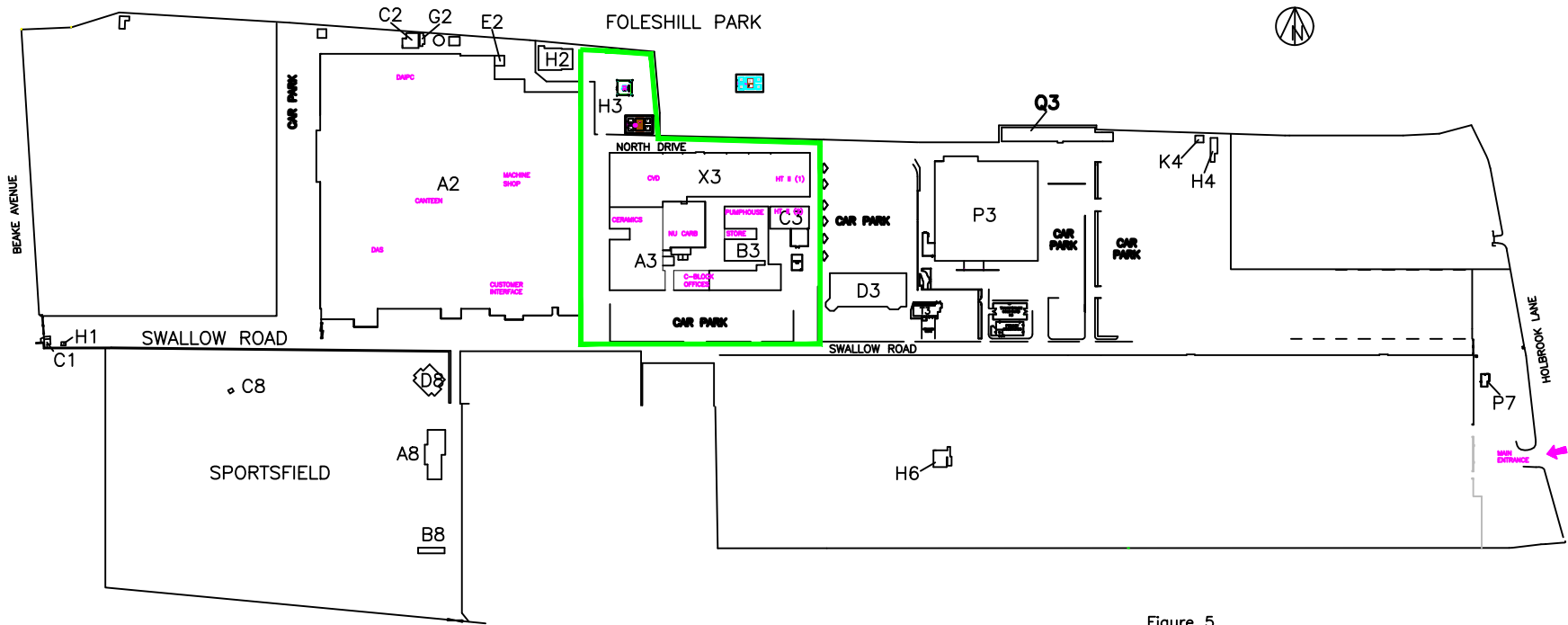
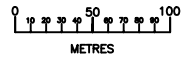


Figure 5

— DENOTES PPC PROCESS BOUNDARY
AND CVD MEGGITT BOUNDARY

DRG.No. WE 3259

6	1/08/19	SS		LNG INCLUDED																
5	APRIL.17	SS																		
4	FEB. 11	RP																		
8	Jan 20	RIP		Cooling System Changed																
7	Dec 19	RIP		NU CARB INCLUDED																
ISSUE	DATE	DRAWN	CHECKED	MODIFICATION	OPERATIONS DIRECTOR	MANAGER C.V.D.	TEAM LEADER C.V.D.	MANAGER ALLIARY	MANAGER SITE FACILITIES	SAFETY & ENVL. OFFICER	CHIEF OF SECURITY									

TITLE
MEGGITT
SITE OWNERSHIP & PPC PROCESS
BOUNDARIES

DRG.No.
WE 3259