

KEY

- F1 - COMPRESSOR HOUSE
- A2 - MANUFACTURING FACILITY
- A8 - SOCIAL CLUB
- C2 - COMPRESSOR HOUSE
- G2 - BLAST CHAMBER
- H2 - WASTE COMPOUND
- A3 - MANUFACTURING OFFICES
- B3 - OFFICES
- C3 - HT II (FACILITY 2)
- D3 - OFFICES
- P3 - MEGGITT CONTROL SYSTEMS
- Q3 - MEDICAL CENTRE
- H4 - GAS METER HOUSE
- H6 - LEASED BUILDING
- K4 - STORM WATER INTERCEPTOR
- P3 - MEGGITT CONTROL SYSTEMS
- P7 - SECURITY BUILDING
- S3 - PUMPHOUSE
- T3 - FIRESTATION
- X3 - CVD
- H3 - PROPOSED COOLING TOWERS

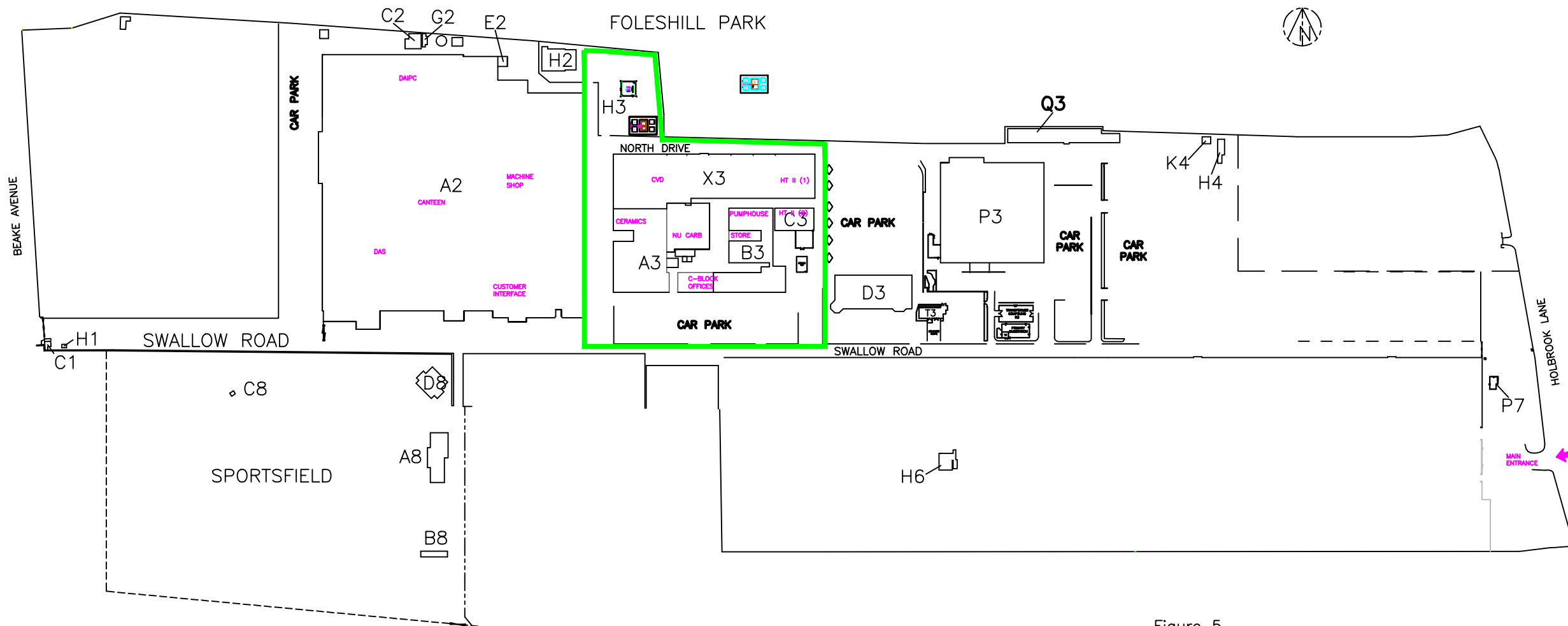
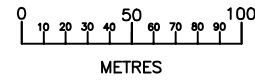


Figure 5

— DENOTES PPC PROCESS BOUNDARY  
AND CVD MEGGITT BOUNDARY

DRG.No. WE 3259	6	1/08/19	SS	LNG INCLUDED										
	5	APRIL.17	SS											
	4	FEB. 11	RP											
	8	Jan 20	RIP	Cooling System Changed										
	7	Dec 19	RIP	NU CARB INCLUDED										
ISSUE	DATE	DRAWN	CHECKED	MODIFICATION	OPERATIONS DIRECTOR	MANAGER C.V.D.	TEAM LEADER C.V.D.	MANAGER A.M.LABY	MANAGER SITE FACILITIES	SAFETY & ENVL. OFFICER	CHIEF OF SECURITY			

TITLE  
MEGGITT  
SITE OWNERSHIP & PPC PROCESS  
BOUNDARIES

DRG.No.  
WE 3259