

- Fine fiber technology ensures longer filter life at a significantly lower pressure drop
- Wide pleat spacing provides thorough pulse cleaning of fibrous and agglomerative particles
- MERV\* 14 filtration efficiency rating per ASHRAE 52.2-2007
- Superior particle release due to surface filtration
- Lightweight and easy to install
- Flame retardant media available
- Stainless steel construction available



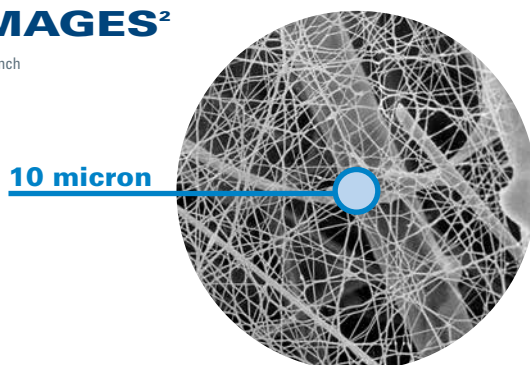
**Fibra-Web Cartridge**

## APPLICATIONS

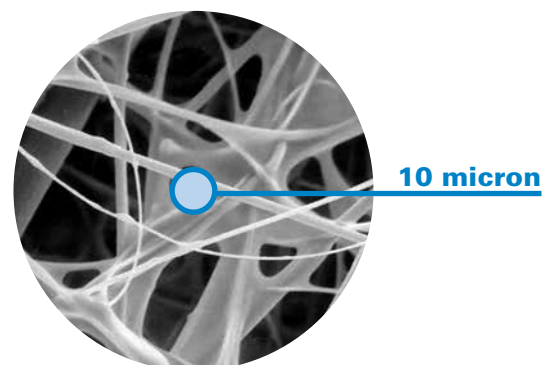
- Excellent on applications with a combination of fibrous and non-fibrous dust including ceramics, cotton, fiberglass, grains, and many more
- Proven solution for agglomerative dust

## SEM IMAGES<sup>2</sup>

1 micron = 1/25,400 of an inch  
(1/1000 of a millimeter)



**Fibra-Web (600x)**  
Fine Fiber Media



**Synthetic Media (600x)**

<sup>†</sup> Scanning Electron Microscope

\* Refer to Minimum Efficiency Reporting Value on page 2.

## SPECIFICATIONS

MEDIA COMPATIBILITY DATA	
Temperature Resistance	180°F / 82°C
Moisture Absorption**	Maximum 14% @ 70°F (21°C) and 65% RH
Chemical Tolerance***	Acids→Poor      Oxidants→Fair Bases→Fair      Solvents→Good
Abrasion Resistance	Good per TAPPI 476 (Taber Method)
MEDIA COMPOSITION	
Fine Fiber Technology	Proprietary synthetic fibers with an average diameter of 0.2 µm
Substrate	Proprietary blend of synthetic fibers with an average diameter of 12 µm Flame retardant version per UL <sup>†</sup> Standard 558 TAPPI Standard T 461 om-94, and DIN 53438 Part 3

CARTRIDGE CONSTRUCTION	
Standard Construction	Galvanized metal end caps Galvanized expanded metal inner liner 60% open area Urethane gasket No outer liner
Options	Stainless steel liner and end caps Flame retardant media EPDM gasket
MEDIA EFFICIENCY	
U.S. Efficiency Rating	MERV* 14 per ASHRAE 52.2-2007

## CONFIGURATIONS

Collector Models	Filter Area		Pleat Height		Dimensions		Fibra-Web		
	ft²	m²	in	mm	in	mm	Standard	FR	SS
Bin Vent (TBV)	111.0	10.3	2.0	50.8	12.74 x 26.0	323.6 x 660.4	•	•	•
CX Series	119.0	11.1	2.0	50.8	13.84 x 26.0	351.5 x 660.4	•	•	
Downdraft Bench (DB)	119.0	11.1	2.0	50.8	13.84 x 26.0	351.5 x 660.4	•	•	
Downflo® (DF)	111.0	10.3	2.0	50.8	12.74 x 26.0	323.6 x 660.4	•	•	•
Downflo® II (DFT)	119.0	11.1	2.0	50.8	13.84 x 26.0	351.5 x 660.4	•	•	•
Downflo® Containment System (DCS)	89.0	8.3	1.5	38.1	11.4 x 14.4 x 26.0	288.5 x 364.7 x 660.4	•	•	•
Downflo® Oval (DFO)	89.0	8.3	1.5	38.1	11.4 x 14.4 x 26.0	288.5 x 364.7 x 660.4	•	•	•
Downflo® Evolution (DFE)	119.0	11.1	2.0	50.8	13.74 x 13.74 x 26.0	349.1 x 349.1 x 660.4	•	•	•
Downflo® WorkStation (DWS)	89.0	8.3	1.5	38.1	11.4 x 14.4 x 26.0	288.5 x 364.7 x 660.4	•	•	•
Downflo® (SDF)	55.0	5.1	1.5	38.1	9.2 x 22.3	233.9 x 566.1	•	•	
Environmental Control Booth (ECB)	111.0	10.3	2.0	50.8	12.74 x 26.0	323.6 x 660.4	•	•	•
MTD	111.0	10.3	2.0	50.8	12.74 x 26.0	323.6 x 660.4	•	•	•
ProBooth™	111.0	10.3	2.0	50.8	12.74 x 26.0	323.6 x 660.4	•	•	•
TD Large	111.0	10.3	2.0	50.8	12.74 x 26.0	323.6 x 660.4	•	•	•
TD Small	43.0	4.0	2.0	50.8	7.9 x 16.0	201.4 x 406.4	•		

† UL is a registered trademark of Underwriters Laboratories, Inc.

\* The Minimum Efficiency Reporting Value (MERV) of this filter cartridge has been determined through independent laboratory testing using ASHRAE 52.2 (2007) test standards. The MERV rating was determined at a face velocity of 118 feet per minute (36.0 meters per minute) and loading up to four inches (101.6 millimeters) water gauge. Actual efficiency of any filter cartridge will vary according to the specific application parameters. Dust concentration, airflow, particle characteristics, and pulse cleaning methods all affect filtration efficiency.

\*\* Environmental conditions involving combinations of high temperature, corrosive material, and moisture can reduce media strength. Reduction in media strength may compromise cartridge integrity and performance.

\*\*\* A combination of chemicals may alter fiber resistance to the specified performance level. Chemical attack may compromise cartridge integrity and performance.

Significantly improve the performance of your collector with genuine Donaldson Torit replacement filters and parts. **Call Donaldson Torit at 800-365-1331.**

### Important Notice

Many factors beyond the control of Donaldson can affect the use and performance of Donaldson products in a particular application, including the conditions under which the product is used. Since these factors are uniquely within the user's knowledge and control, it is essential the user evaluate the products to determine whether the product is fit for the particular purpose and suitable for the user's application. All products, product specifications, availability and data are subject to change without notice, and may vary by region or country.



Donaldson Company, Inc.  
Minneapolis, MN  
[donaldson.com](http://donaldson.com) • [shop.donaldson.com](http://shop.donaldson.com)

**North America**  
Email: [donaldson@donaldson.com](mailto:donaldson@donaldson.com)  
Phone: (USA): 800-365-1331 • (MX): 800-343-3639

**Australasia**  
Email: [marketing.australia@donaldson.com](mailto:marketing.australia@donaldson.com)  
Phone: +61 2 4350 2000  
Toll Free: (AU) 1800 345 837 • (NZ) 0800 743 387

F118117 ENG (06/18) Fibra-Web Cartridge ©2011-2018 Donaldson Company, Inc.

Donaldson, Torit, Fibra-Web, Downflo, ProBooth and the color blue are marks of Donaldson Company, Inc. All other marks belong to their respective owners.

**China IAF**  
Email: [info.cn@donaldson.com](mailto:info.cn@donaldson.com)  
Phone: (86) 400-820-1038

**Donaldson Europe B.V.B.A.**  
Email: [IAF-europe@donaldson.com](mailto:IAF-europe@donaldson.com)  
Phone: +32 (0) 16 38 38 11

**India**  
Email: [marketing.India@donaldson.com](mailto:marketing.India@donaldson.com)  
Phone: +91 124 4807400  
Toll Free: 18001035018

**Latinoamerica**  
Email: [IndustrialAir@donaldson.com](mailto:IndustrialAir@donaldson.com)  
Phone: +52 449 300 2442

**South Africa**  
Email: [SAMarketing@donaldson.com](mailto:SAMarketing@donaldson.com)  
Phone: +27 11 997 6000

**Southeast Asia IAF**  
Email: [IAF.SEA@donaldson.com](mailto:IAF.SEA@donaldson.com)  
Phone: (65) 63117373