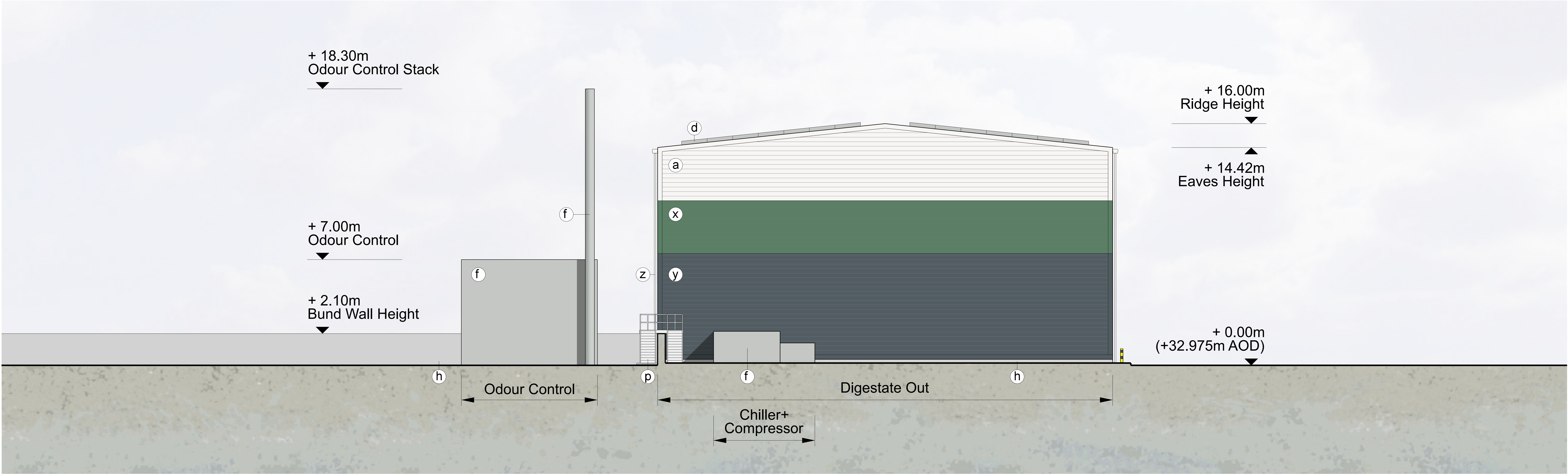
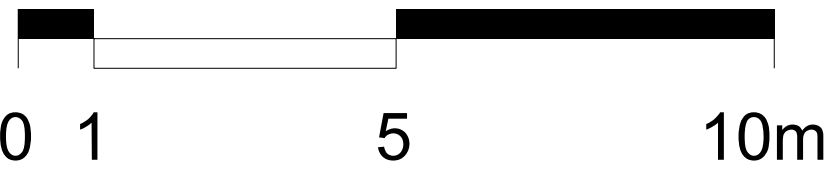


East Elevation



West Elevation



<div>NOTE</div> <div>1. THIS DRAWING IS COPYRIGHT GSDA LTD.</div> <div>2. THE CONTRACTOR MUST NOT SCALE FROM THE DRAWING ALL DIMENSIONS TO BE TAKEN FROM DIMENSION STRINGS.</div> <div>3. WHERE ANY DISCREPANCIES ARE FOUND BETWEEN DIMENSIONS THESE MUST BE BROUGHT TO THE ATTENTION OF THE ARCHITECTS FOR RESOLUTION.</div> <div>4. WHERE DISCREPANCIES EXIST BETWEEN REFERENCE OR ASSEMBLY DRAWINGS &amp; DETAIL DRAWINGS, THE LATTER TAKE PREFERENCE.</div>	<div>LEGEND</div> <div><div>a Trapezoidal metal wall cladding / flashing Colour: Hamlet (RAL 9002)</div><div>b Trapezoidal metal roof cladding / flashing Colour: Hamlet (RAL 9002)</div><div>c Flat roofing and gutter - Single ply membrane system Colour: Lead Grey (RAL 7012)</div><div>d Photovoltaic panels</div><div>e Powder coated aluminium louvres and louvered door to plant room Colour: Anthracite (RAL 7016)</div><div>f Paint finish to plant, tanks, ducts and stacks etc Colour: Oyster (RAL 7035)</div><div>g Paint finish to plant, tanks, ducts and stacks etc Colour: Anthracite (RAL 7016)</div><div>h Concrete plinth and concrete push wall</div><div>i Outer steel roller shutter door. Inner high speed curtain door. Colour: Anthracite (RAL 7016)</div><div>j Aluminium framed curtain walling and glazing and doors Colour: Anthracite (RAL 7016)</div><div>k Painted metal personnel doors, Colour: Anthracite (RAL 7016)</div><div>l PPC Metal rainwater goods, Colour: Anthracite (RAL 7016)</div><div>m Trapezoidal metal screening to gas upgarding and gas to grid Colour: Anthracite (RAL 7016)</div><div>n Protective bollards</div><div>o Bickwork plinth</div><div>p PPC metal gantries, stairs and rooftop railings Colour: Hamlet (RAL 9002)</div><div>q ARMCO barrier Finish: galvanised steel</div><div>r PPC Roof access hatch Colour: Lead Grey RAL 7012</div><div>s PPC Metal rainwater goods, Colour: Lead Grey RAL 7012</div><div>t PVC tank hood Colour: light grey</div><div>u Flat metal cladding / flashing Colour: Anthracite (RAL 7016)</div><div>v AC Unit Colour: Anthracite (RAL 7016)</div><div>w Curtain walling glass spandrel (blanking) panels Colour: Alaska Grey (RAL 7000)</div><div>x Trapezoidal metal wall cladding / flashing Colour: Jade Green (RAL 150 50 20)</div><div>y Trapezoidal metal wall cladding / flashing Colour: Anthracite (RAL 7016)</div><div>z PPC Metal rainwater goods, Colour: Hamlet (RAL 9002)</div><div>a1 Trapezoidal metal roof cladding / flashing Colour: Anthracite (RAL 7016)</div><div>b1 Curtain walling glass spandrel (blanking) panels Colour: Jade Green (RAL 150 50 20)</div><div>c1 Flat metal cladding / flashing Colour: Jade Green (RAL 150 50 20)</div><div>d1 Brise Soleil, PPC steel louvre transoms with horizontal extruded aluminium fins Colour: Anthracite (RAL 7016)</div><div>e1 Powder coated aluminium louvres Colour: Jade Green (RAL 150 50 20)</div></div>									
	<div>PROJECT</div> <div>Suez Beddington Lane AD</div>									
	<div>DRAWING</div> <div>Main Process Building - Proposed Elevations (Sheet 2 of 2)</div>									
	<div>FOR PLANNING</div> <div>1:100@A0 SCALE</div> <div>23/02/15 DATE</div> <div>1452 PL301 DWG. NO.</div> <div>- REVISION</div> <div>23/02/15 Issued for Planning</div> <div></div> <div></div> <div></div> <div></div> <div></div> <div></div>									

GSDA

GARRY STEWART DESIGN ASSOCIATES

01 Meadlake Place, Thorpe Lea Road, Egham, Surrey, TW20 8HE  
T. 01932 629139