

MATERIAL THICKNESSES.

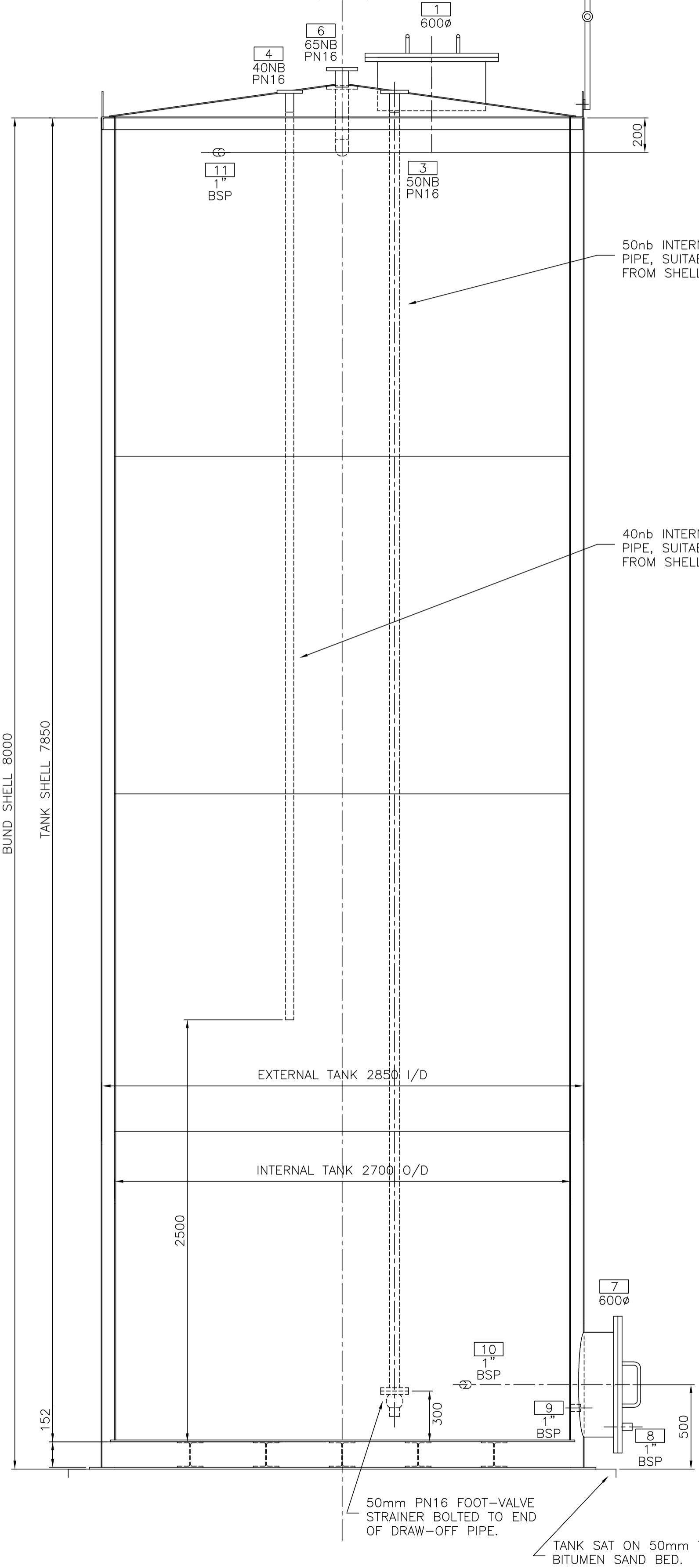
INTERNAL SHELL & ROOF 6mm
 INTERNAL TANK BASE 10mm
 EXTERNAL SHELL 5mm
 EXTERNAL BASE 10mm

ULTRASONIC INSTRUMENT FITTED TO NOZZLE 2 TO PROVIDE LOW LEVEL, HIGH LEVEL AND OVERFILL ALARMS.

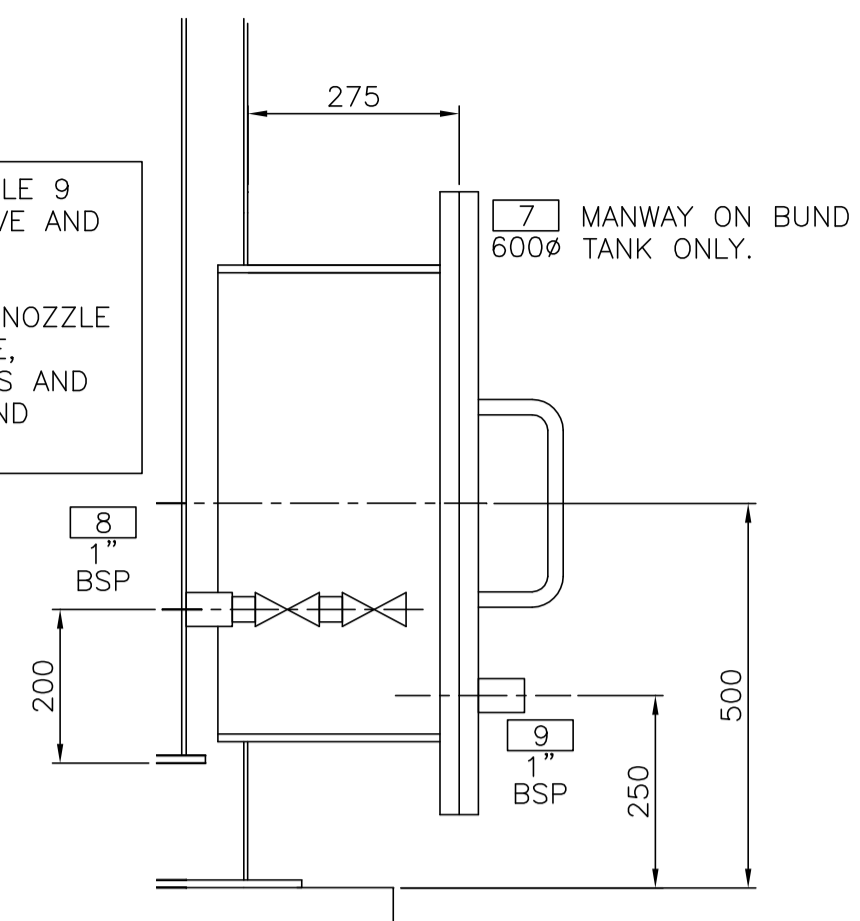
LIFTING & TAILING LUGS POSITIONED AS REQUIRED.

BUND DRAIN ON NOZZLE 9 FITTED WITH BALL VALVE AND PLUGGED OFF.
 MAIN TANK DRAIN ON NOZZLE 8 FITTED WITH DOUBLE, LOCKABLE BALL VALVES AND CONTAINED WITHIN BUND MANWAY.

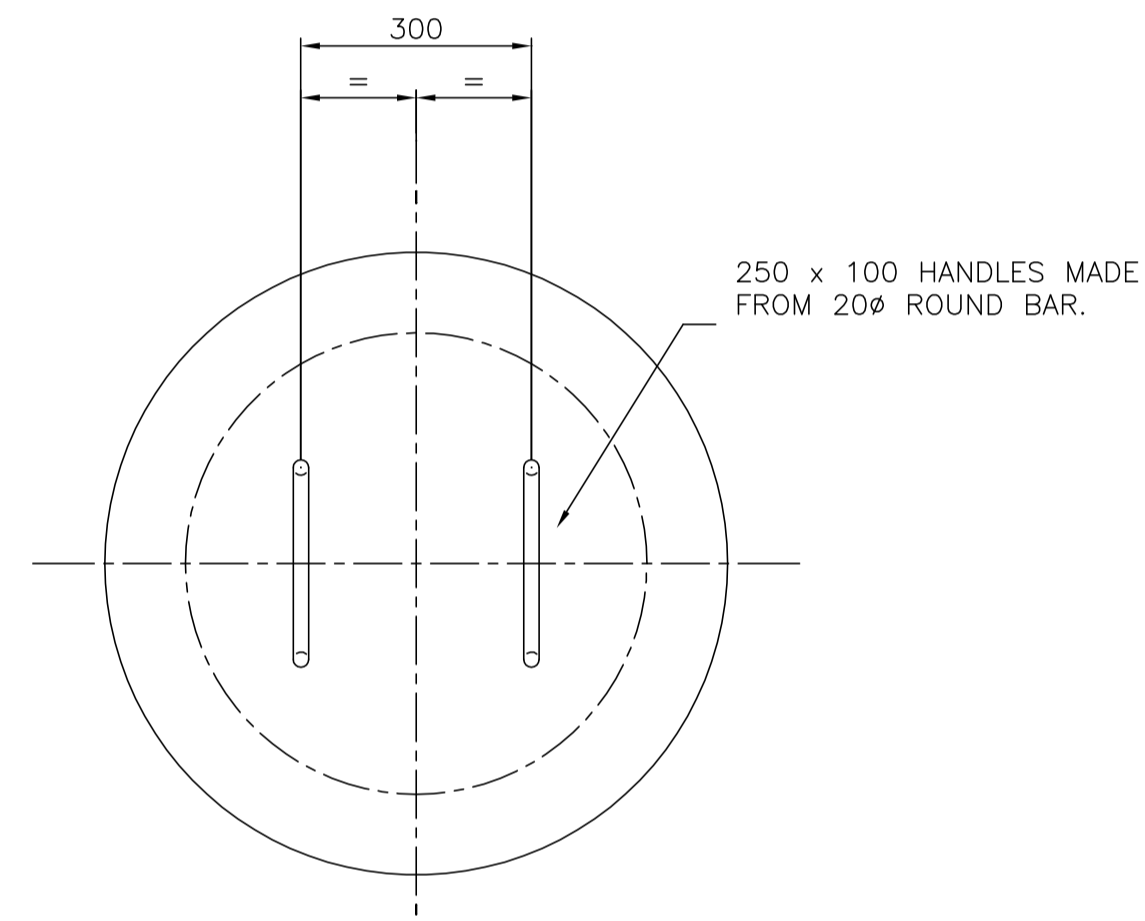
ACCESS LADDER AND PERIPHERY HANDRAILING TO BE GALVANISED.



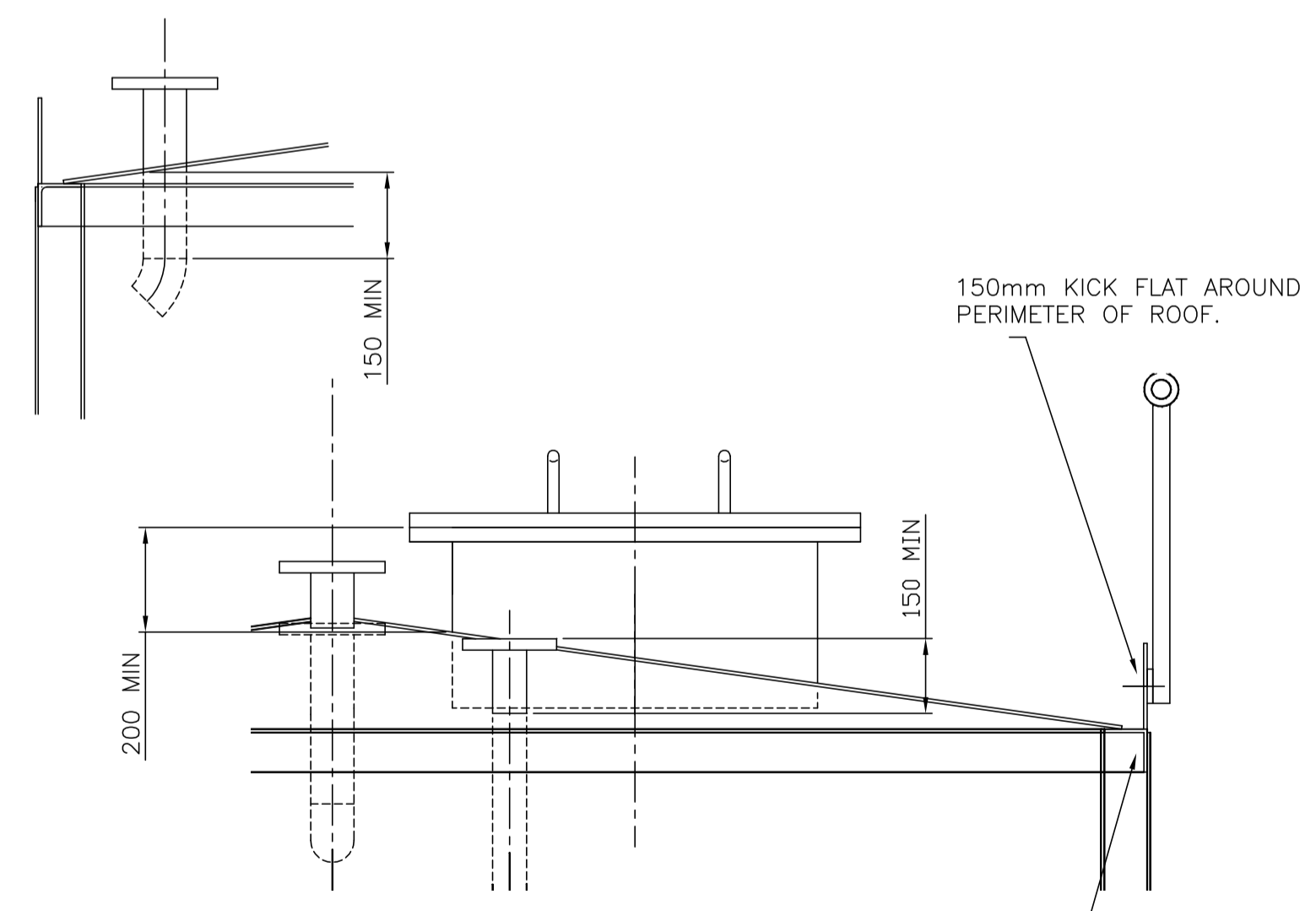
ELEVATION ON 'X'



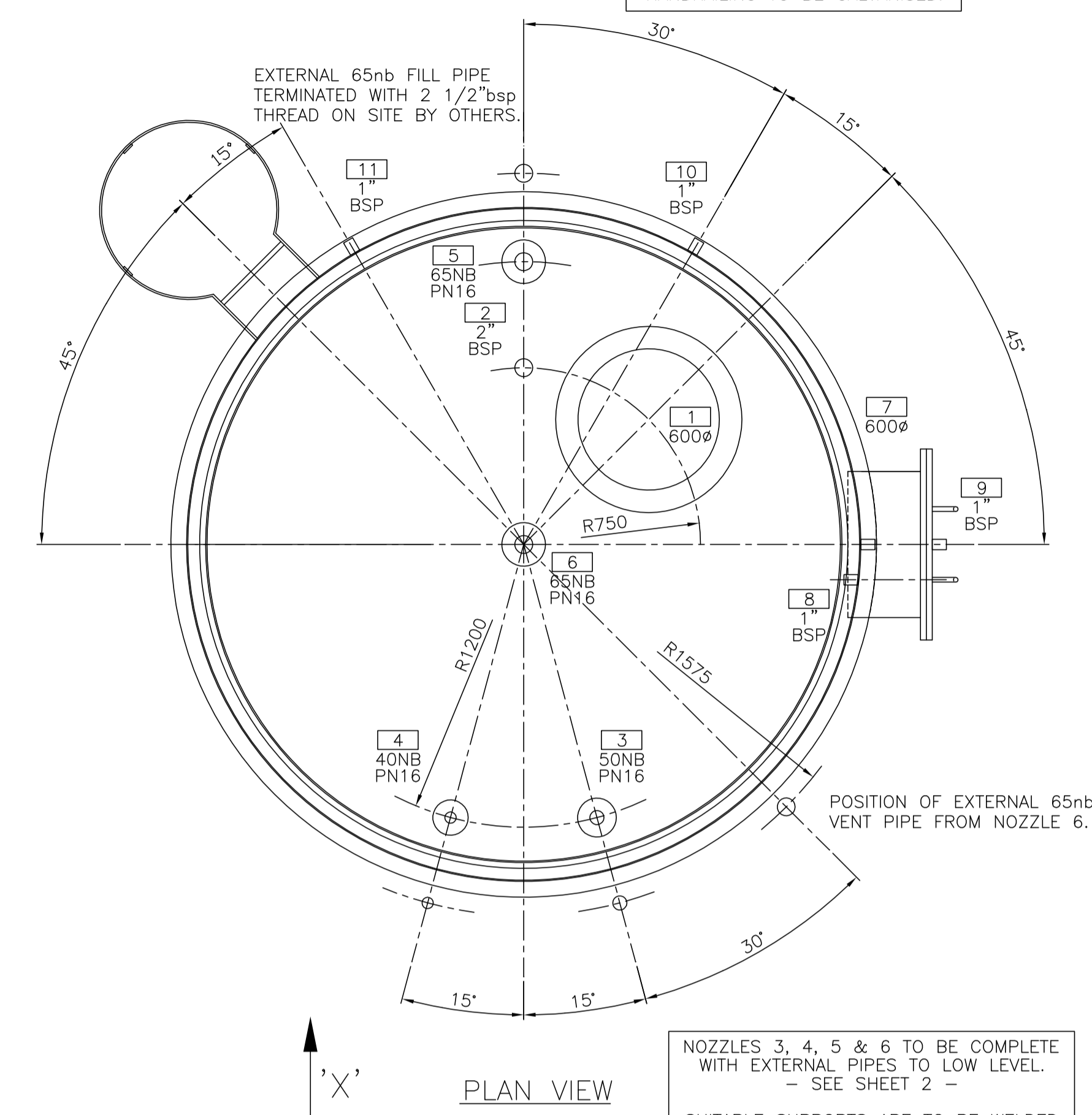
DETAIL OF BUND AND TANK DRAIN NOZZLE POSITIONS (SCALE 1:10)



DETAIL OF MANWAY HANDLES (SCALE 1:10)

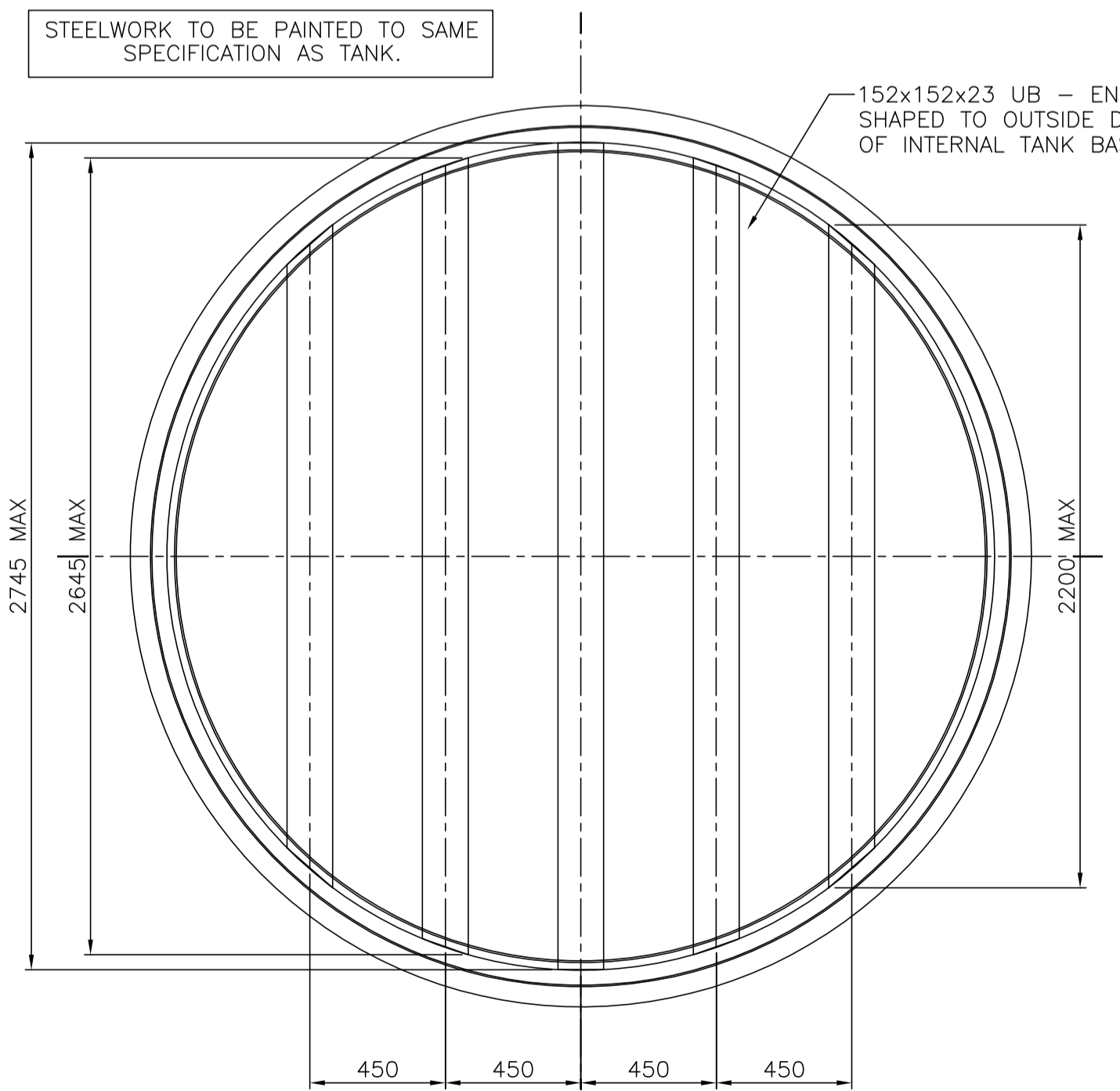


DETAIL OF ROOF AND TYPICAL NOZZLE UPSTANDS (SCALE 1:10)



PLAN VIEW

NOZZLES 3, 4, 5 & 6 TO BE COMPLETE WITH EXTERNAL PIPES TO LOW LEVEL. - SEE SHEET 2 -
 SUITABLE SUPPORTS ARE TO BE WELDED TO EXTERNAL SHELL OF BUND TANK.



SECTIONAL PLAN VIEW SHOWING SUPPORT STEELWORK

STEELWORK TO BE DESIGNED TO SUSTAIN LOADS OF INTERIOR TANK.

NOZZLE SCHEDULE					
NOZZ	SIZE	RATING	No OFF	SERVICE	REMARKS
1	600nb	BS4504 PN16	ONE	ROOF MANWAY	-
2	2"	BSP CPLG	ONE	LEVEL INSTRUMENT	ULTRASONIC
3	50nb	BS4504 PN16	ONE	DRAW OFF	-
4	40nb	BS4504 PN16	ONE	RETURN	-
5	65nb	BS4504 PN16	ONE	FILL	-
6	65nb	BS4504 PN16	ONE	VENT	TO BE CONFIRMED
7	600nb	BS4504 PN16	ONE	BUND MANWAY	+ NOZZ 9
8	1"	BSP CPLG	ONE	SLUDGE DRAIN	-
9	1"	BSP CPLG	ONE	BUND DRAIN	-
10	1"	BSP CPLG	ONE	LEAK DETECTION	VIBRATING FORK
11	1"	BSP CPLG	ONE	BUND VENT	-

DESIGN CONDITIONS	
DESIGN CODE :	BS799 PART 5 : 1987 TYPE G
WORKING PRESSURE :	ATMOSPHERIC
DESIGN PRESSURE :	-
WORKING TEMPERATURE :	AMBIENT
DESIGN TEMPERATURE :	-
TEST MEDIUM :	AIR
TEST PRESSURE :	0.21 BAR
CORROSION ALLOWANCE :	-
STRESS RELIEVE :	NONE
NDT :	VISUAL INSPECTION OF WELDS
CERTIFICATE :	TO BE PROVIDED BY MANUFACTURER

WEIGHTS	
WEIGHT EMPTY :	8 TONNE (MAX)
OPERATING WEIGHT :	48 TONNE
TOTAL VOLUME :	45 CUBIC METRES
WORKING VOLUME :	44.9 CUBIC METRES
DENSITY OF CONTENTS :	890 KG/CUBIC METRE

MATERIALS OF CONSTRUCTION	
SHELL :	MILD STEEL BSEN10 025 S275
TOP & BASE:	MILD STEEL BSEN10 025 S275
NOZZLES (PIPE) :	MILD STEEL TUBE API 5L GRADE B
NOZZLES (FLANGES) :	MILD STEEL BS4504 PN16 RF SLIP ON
NOZZLES (COUPLINGS) :	FORGED STEEL BS3799 - ENDS AS NOTED
GASKETS :	-
BOLTS :	-
SADDLES :	N/A
STIFFNERS :	MILD STEEL
INTERNAL COIL :	N/A
COMPENSATION PLATES :	MILD STEEL
LIFTING LUGS :	MILD STEEL
EARTHING BOSS :	-
DAVIT ARMS :	MILD STEEL
NAMEPLATE	-

SURFACE FINISH	
EXTERNAL :	SHOT BLAST - SA25 PAINTED -INTERCURE 200, DFT 80microns -INTERCURE 384, DFT 120microns -INTERCURE 629, DFT 50microns COLOUR -RAL 6003
INTERNAL :	CLEANED AND LEFT SELF COLOUR

INSPECTION	
VISUAL	

REV	DATE	DESCRIPTION	DWN	CHK	APP
4	09.03.06	BUND MANWAY OUTSTAND CONFIRMED DRAW-OFF PIPE MODIFIED AND FOOT-VALVE STRAINER ADDED.			SCH
3	03.03.06	NOZZLE ORIENTATIONS CHANGED SHEET 2 (EXT. PIPEWORK) ADDED			SCH
2	22.02.06	VARIOUS MODS FOLLOWING CLIENT COMMENTS			SCH
1	17.02.06	FOR CLIENT APPROVAL			SCH

THIS DRAWING IS PRIVATE AND CONFIDENTIAL AND IT MUST NOT BE COPIED OR COMMUNICATED TO A THIRD PARTY WITHOUT OUR WRITTEN CONSENT.

rdeth engineering
 Dewsbury Road, Elland, West Yorkshire, HX5 9AZ, U.K.
 Tel: +44(0)1222 371014 Fax: +44(0)1422 372218
 Email: info@ardeth.com Web: www.ardeth.com

IF IN DOUBT ASK

DRAWN : S.C.HARLOW	DATE : 17.02.06	PLANT / PROJECT TITLE :
CHECKED :	SCALE : 1:20@A1	COPELLA FRUIT JUICES BOXFORD
APPROVED :	PROJECT No : R0172	

TITLE : OIL STORAGE TANK
 40,000m3 (NOMINAL) - 'TWIN SKIN'

DRAWING No: R0172-1 SHEET 1 REV 4