

File Note**Client:**

Chelmsford City Council

Title:

R008 - Drainage Works Addendum

Project:

2513 - Drovers Way

12 December 2025

Drainage Improvement Works – Addendum

Following the submission of the bespoke application EPR/BP3022LQ/A001 on 27 June 2025 the site has undertaken a number of improvements to the drainage at the site. The purpose of this addendum is to provide a summary of the improvements along with photographic evidence of the improvements. This addendum should be read in conjunction with the submitted application and specifically the following reports

- 2513-R002 Supporting Information
- 2513-R004 Fire Prevention Plan
- 2513-R007 Environmental Risk Assessment






Following a visit to site with representatives from AardvarkEM Ltd (environmental consultants) and the regulatory officer (28 May 2025) it was discussed that improvements to the sites drainage were required. A visual representation of the Improvement Plan for the drainage network is presented in Appendix 1. Improvements to the site drainage were carried out by a contractor, works commenced on the 1st September and were completed on 15th September 2025. A summary of the improvements carried out are outlined below

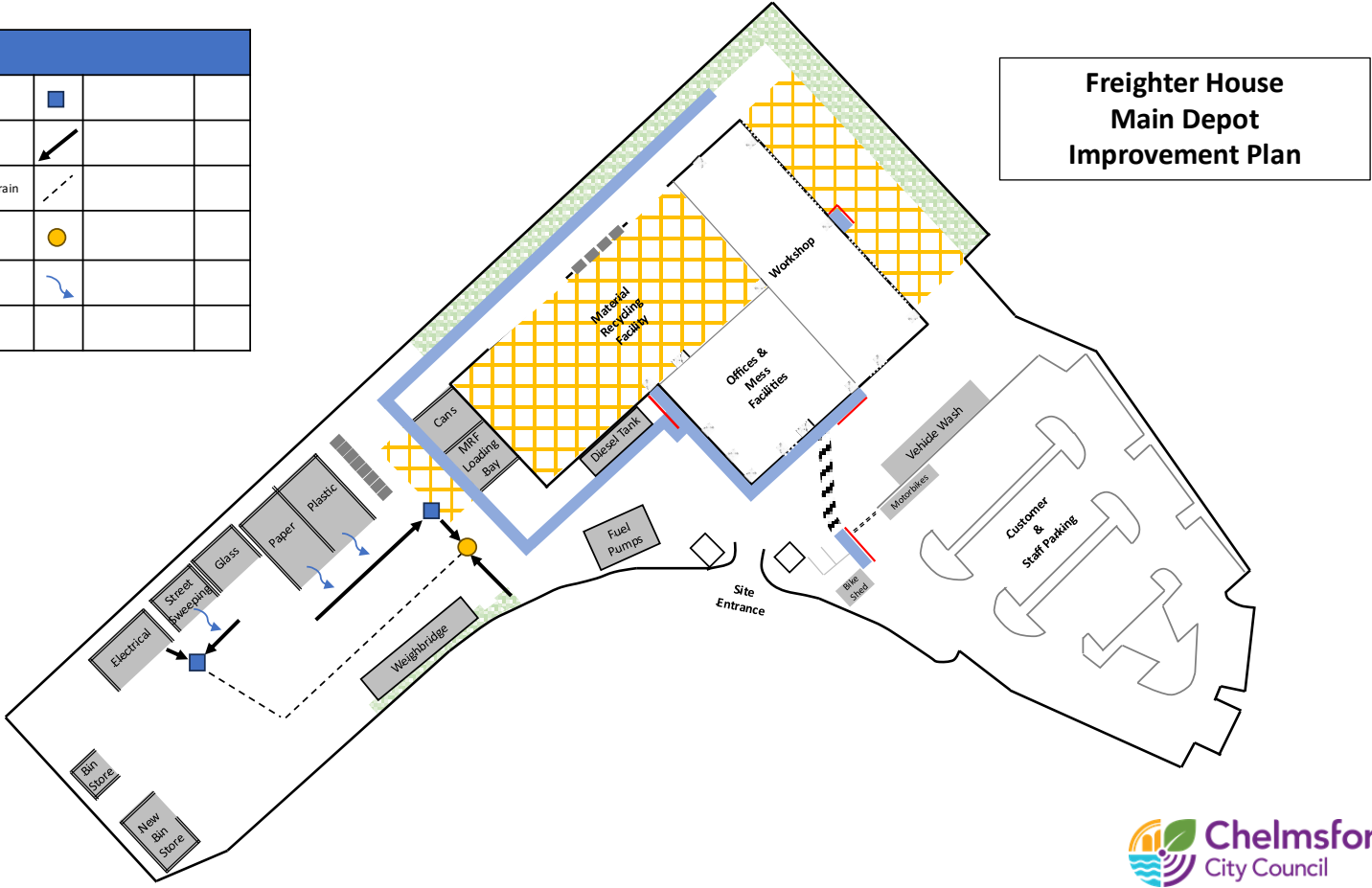
- Removal of the existing Aco drainage adjacent to road sweepings and electrical bay and replaced with a concrete lined trench dug to a depth of 700mm with a settlement chamber.
- Reinstatement of the drainage channel and installation of a catch pit in front off the paper and plastics bays
- Installation drainage at the entrance to the waste storage areas along with a penstock valve.

Photos showing the completed works are provided in Appendix 2.

A revised drainage plan is currently in commission and will be shared once available.

Appendix 1

Key			
Catchment Pit			
Drainage Channel			
Existing Surface Water Drain			
Penstock Valve			
Water Flow			



Appendix 2



Figure 1. Street sweeping bay post- improvements



Figure 2. Reinstated drainage channels along length of the site



Figure 3. improved drainage channel adjacent to the street sweeping a electrical bay

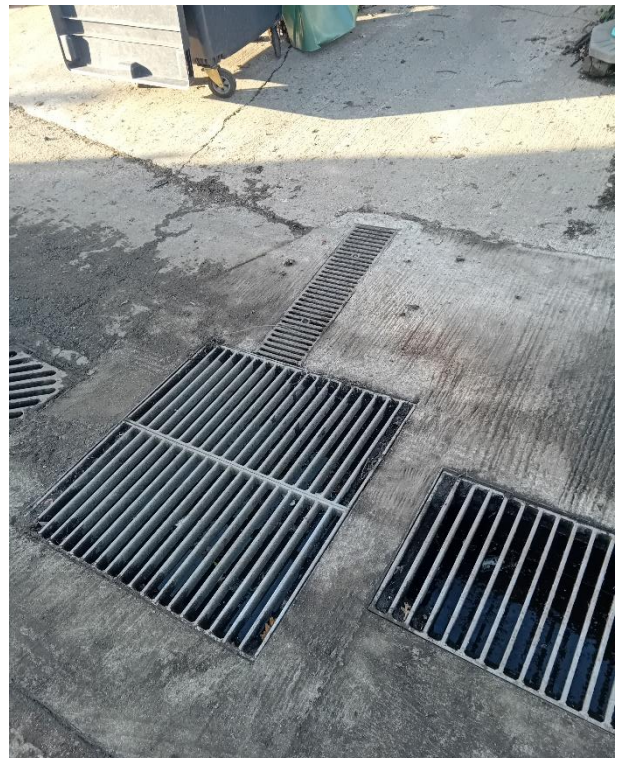


Figure 4. New drains that have been installed at the site



Figure 5. Reinstated drainage channels looking up the site

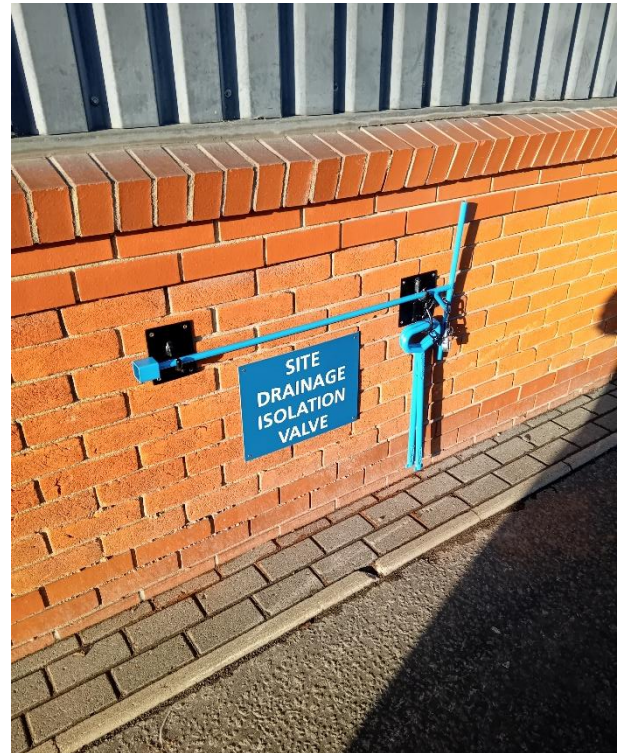


Figure 6. Installation of new penstock valve