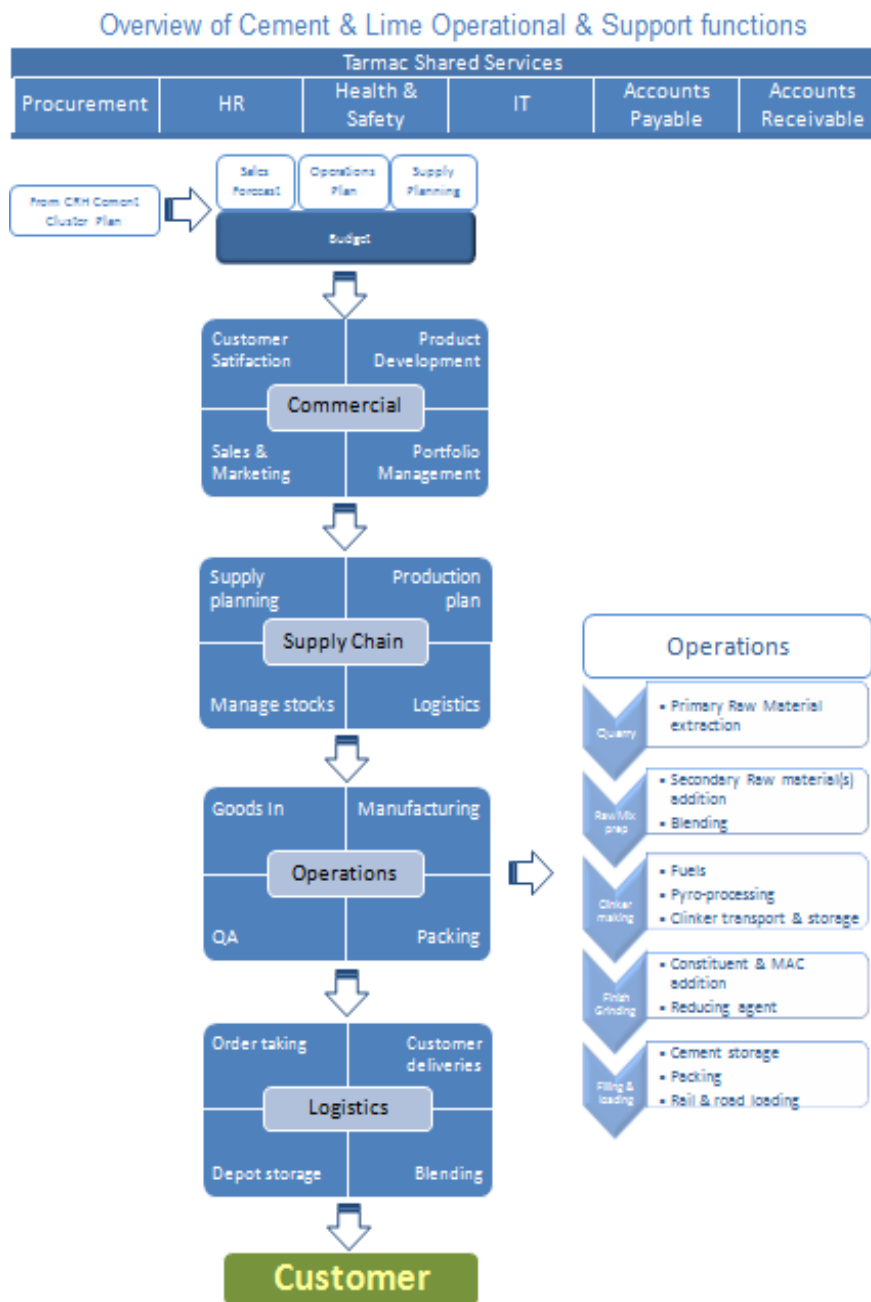


Environment¹ and Quality are managed using the same system but will include elements specific or unique to each subject as necessary. These elements are detailed in Environmental Management Procedures & Quality Management Procedures which address specific risks or other legal & regulatory requirements of the respective topics

- Integrated Management System (IMS)
- Integrated Management Manual (IMM)
- Integrated Management Procedures (IMP)
- Environmental Management Procedures (EMP) + Quality Management Procedures (QMP)

Within the IMS specific areas are covered as shown below:



¹ For the purposes of IMS, Energy is managed through the Environment Management System

2.2 Scope of the IMS

This document sets out the Management Procedures to cover the principle standards upon which the IMS is based:-

- BS EN ISO 14001:2015 Environmental Management Systems
 - BS EN ISO 9001:2015 Quality Management Systems²
 - ISO 50001:2011 Energy Management Systems
- The IMS will also cover the requirements of other standards and Codes of Practice specifically applicable to Tarmac operations, products or stakeholders. A register of applicable documents shall be maintained together with Legal and Regulatory requirements as detailed in IMP 1.

The IMS applies to activities at all operations including Head Office; cement works; blending plants; associated quarries and landfills; storage and distribution depots; laboratories; construction and demolition including works closures; ScotAsh; Sapphire Energy Recovery and CelticAsh.

It applies to the Tarmac Environmental, Quality and Energy & Greenhouse Gas policies, identifies the interactions of the various elements of the IMS and identifies the overall organisation and Management responsibilities.³ The interaction between the various operational processes is illustrated in the introduction of this Manual.

The IMS includes Management Procedures, which are common to the functions of Environment⁴ and Quality. These are then supported by Operating Procedures, which detail how the Management Procedures are implemented to control significant risks and to comply with relevant legislation.

The IMS is supported by other documents, which are likely to include forms, records, instructions, checklists or guidance.

² The close association of the Factory Production Control requirements of BS EN 197-2 Cement – Part 2:2000 Conformity Evaluation with 9001 means this is also covered.

³ For 9001 purposes, all clauses of the standard are covered with no exclusions.

⁴ For the purpose of IMS, “Energy” is managed through the Environment Management System