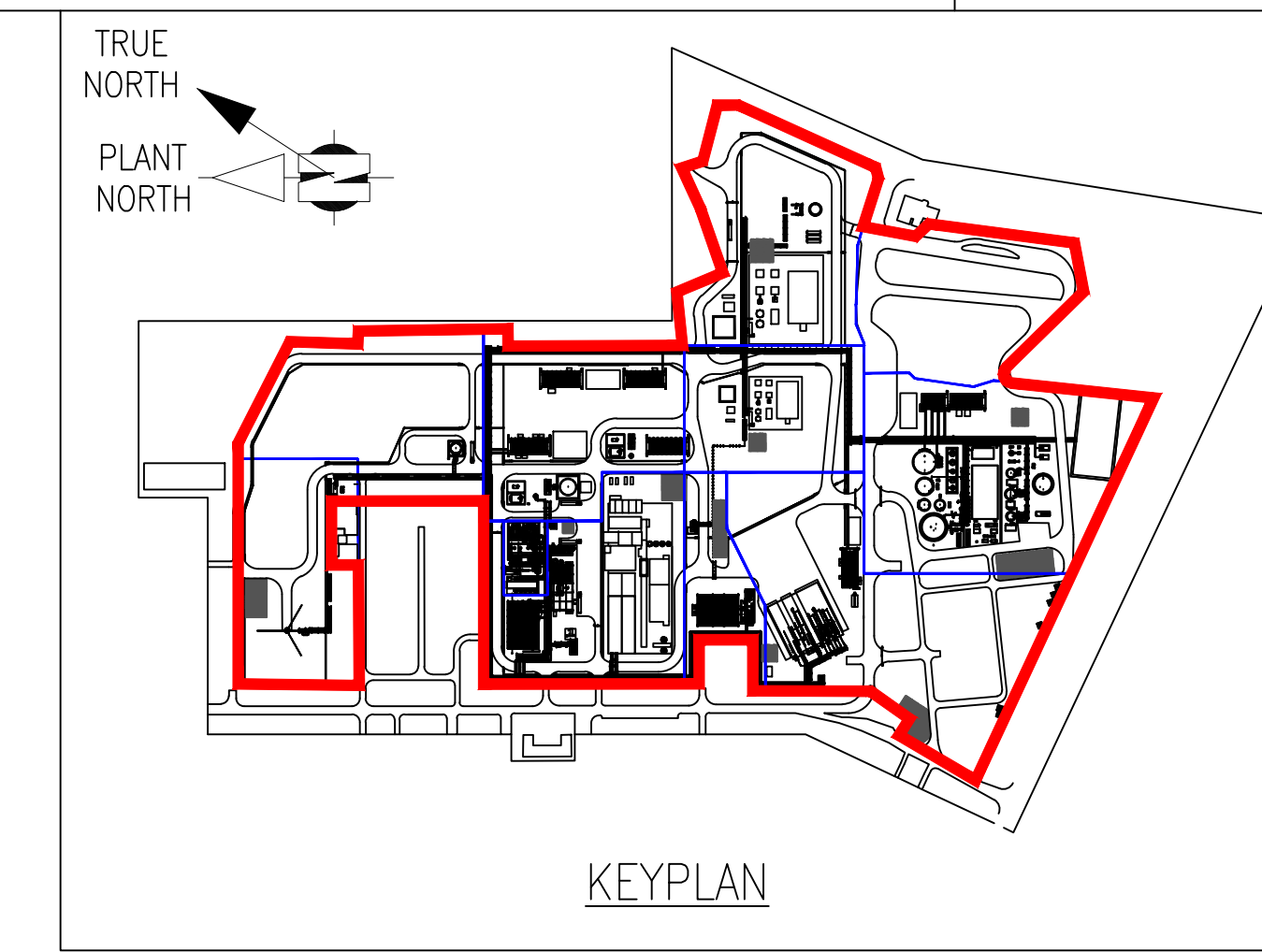


This document and the design it covers are the property of Kent Energies UK Limited. It CAN NOT be reproduced or communicated to any third party without prior written consent given by Kent Energies UK Limited.

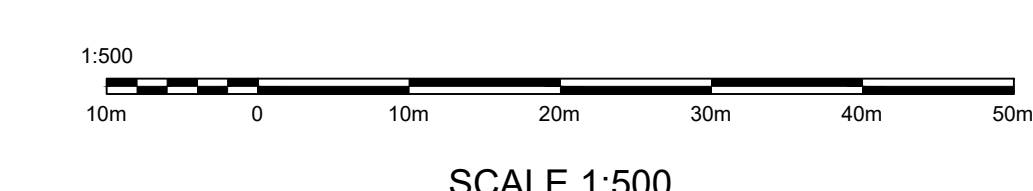


- NOTES**
1. FOR KEYPLAN SEE SEE DRAWING No 5194812-000-46DP01-4-0003-01.
  2. BOUNDARY FENCE REMOVED FOR CLARITY.



**LEGEND**

- FEED SITE BOUNDARY
- ① - FLARE TIP
  - ② - 10-FAA-V-116 - CO2 VESSEL - PHASE 1
  - ③ - CO2 VESSEL - PHASE 2
  - ④ - CO2 VESSEL - PHASE 2
  - ⑤ - ASU COLD BOX - PHASE 1
  - ⑥ - ASU COOLING TOWER - PHASE 2
  - ⑦ - ASU COLD BOX - PHASE 2
  - ⑧ - 10-FAA-V-114 - CO2 VESSEL - PHASE 1
  - ⑨ - CO2 VENT STACK
  - ⑩ - ASU COOLING TOWER - PHASE 1
  - ⑪ - FIRED HEATER STACK
  - ⑫ - AGI CO2 VENT



REV.	DATE	REVISION DESCRIPTION	PREP'D	CHK'D	APP.
04	05/01/2022	ISSUED FOR ENVIRONMENTAL PERMIT APPL.	JB	MS	MW
03	06/12/2021	ISSUED FOR ENVIRONMENTAL PERMIT APPL.	JB	SG	MW
02	21/05/2021	RE-ISSUED FOR USE	JB	SG	MW
01	19/02/2021	ISSUED FOR USE	JB	SG	MW

SCALE 1:500	ORIGINAL DRAWING SIZE A0

PROJECT <b>LOW CARBON HYDROGEN (LCH) FEED</b>		
TITLE <b>EQUIPMENT LOCATION ELEVATION VIEW LOOKING NORTH</b>		
PROJECT NO. <b>5194812</b>	DRAWING NUMBER <b>5194812-000-46DP01-4-0003-12</b>	REV <b>04</b>