

This document and the design it covers are the property of SNC-Lavalin. It can not be reproduced or communicated to any third party without prior written consent given by SNC-Lavalin.

10-CAA-U-001
FLARE IGNITION PACKAGE
NOTE 3

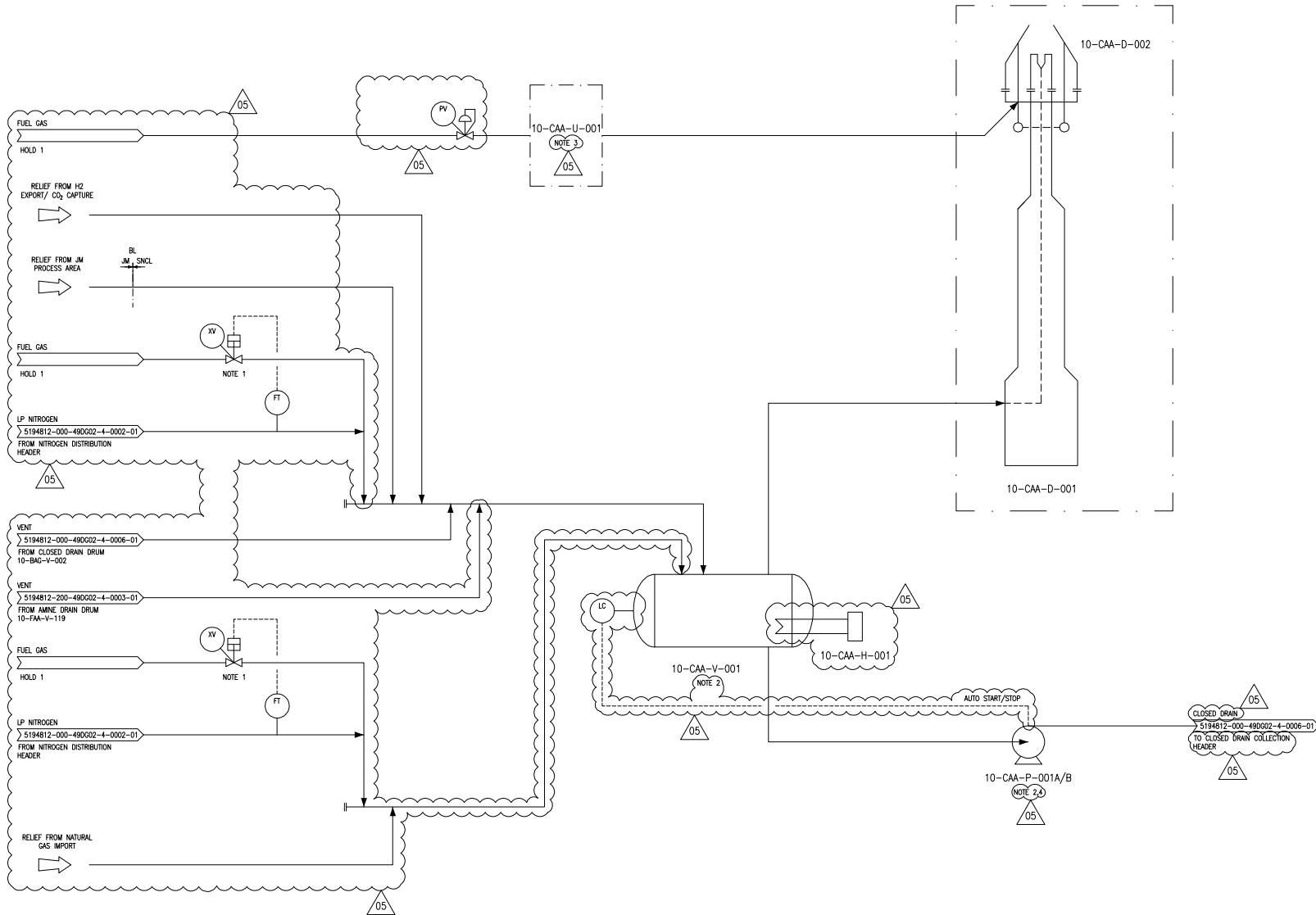
10-CAA-V-001
FLARE KNOCKOUT DRUM
NOTE 2

10-CAA-H-001
FLARE KNOCKOUT DRUM
HEATER

10-CAA-P-001A/B
FLARE KO DRUM PUMPS
NOTE 2A

10-CAA-D-001
FLARE

10-CAA-D-002
FLARE TIP



- NOTES
1. NITROGEN PROVIDED AS PRIMARY PURGE GAS WITH FUEL GAS AS BACK-UP. LOW NITROGEN FLOW SIGNAL OPENS ACTUATED VALVE TO START BACKUP FUEL GAS PURGE.
 2. FLARE KNOCKOUT DRUM PUMPS OPERATE ON AUTO START/STOP CONTROLLED BY HIGH/LOW LIQUID LEVEL IN FLARE KNOCKOUT DRUM. AT HIGH LEVEL, DUTY PUMP STARTS. IF LEVEL CONTINUES TO RISE, STANDBY PUMP STARTS. BOTH STOP AT LOW LIQUID LEVEL.
 3. FLARE IGNITION PACKAGE TO INCLUDE TWO FORMS OF IGNITION SYSTEM. PRIMARY IGNITION SYSTEM SHALL BE AN AUTOMATIC SYSTEM AND SECONDARY IGNITION SYSTEM SHALL BE A MANUAL FLAME FRONT GENERATOR. IGNITION PACKAGE TO ALSO INCLUDE FLARE SHUTTING SYSTEM. LPG BOTTLES TO BE PROVIDED AS PART OF THE PACKAGE AS BACK-UP TO THE PRIMARY FUEL GAS SOURCE.
 4. FLARE KNOCKOUT DRUM PUMPS ARE ONE OPERATING AND ONE STANDBY.

- HOLDS
1. SOURCE OF FUEL GAS TO BE IDENTIFIED DURING DETAILED ENGINEERING.

| REV. | DATE | REVISION DESCRIPTION | PREP'D | CHK'D | APP. |
|------|------------|------------------------------|--------|-------|------|
| 05 | 23/11/2020 | RE-ISSUED FOR DESIGN | JGS | ROB | MW |
| 04 | 10/06/2020 | RE-ISSUED FOR DESIGN | JB | RO | MW |
| 03 | 10/03/2020 | ISSUED FOR DESIGN | JB | RO | MW |
| 02 | 02/03/2020 | ISSUED FOR CONSORTIUM REVIEW | JB | RO | MW |
| 01 | 19/01/2020 | ISSUED FOR IDC | JB | RO | MW |

| | |
|------------|---------------------------|
| | |
| | |
| SCALE: NTS | ORIGINAL DRAWING SIZE: A0 |

PROJECT: LOW CARBON HYDROGEN (LCH) FEED

TITLE: UTILITY FLOW DIAGRAM
FLARE SYSTEM

| PROJECT NO. | DRAWING NUMBER | REV |
|-------------|------------------------------|-----|
| 5194812 | 5194812-000-49DG02-4-0008-01 | 05 |