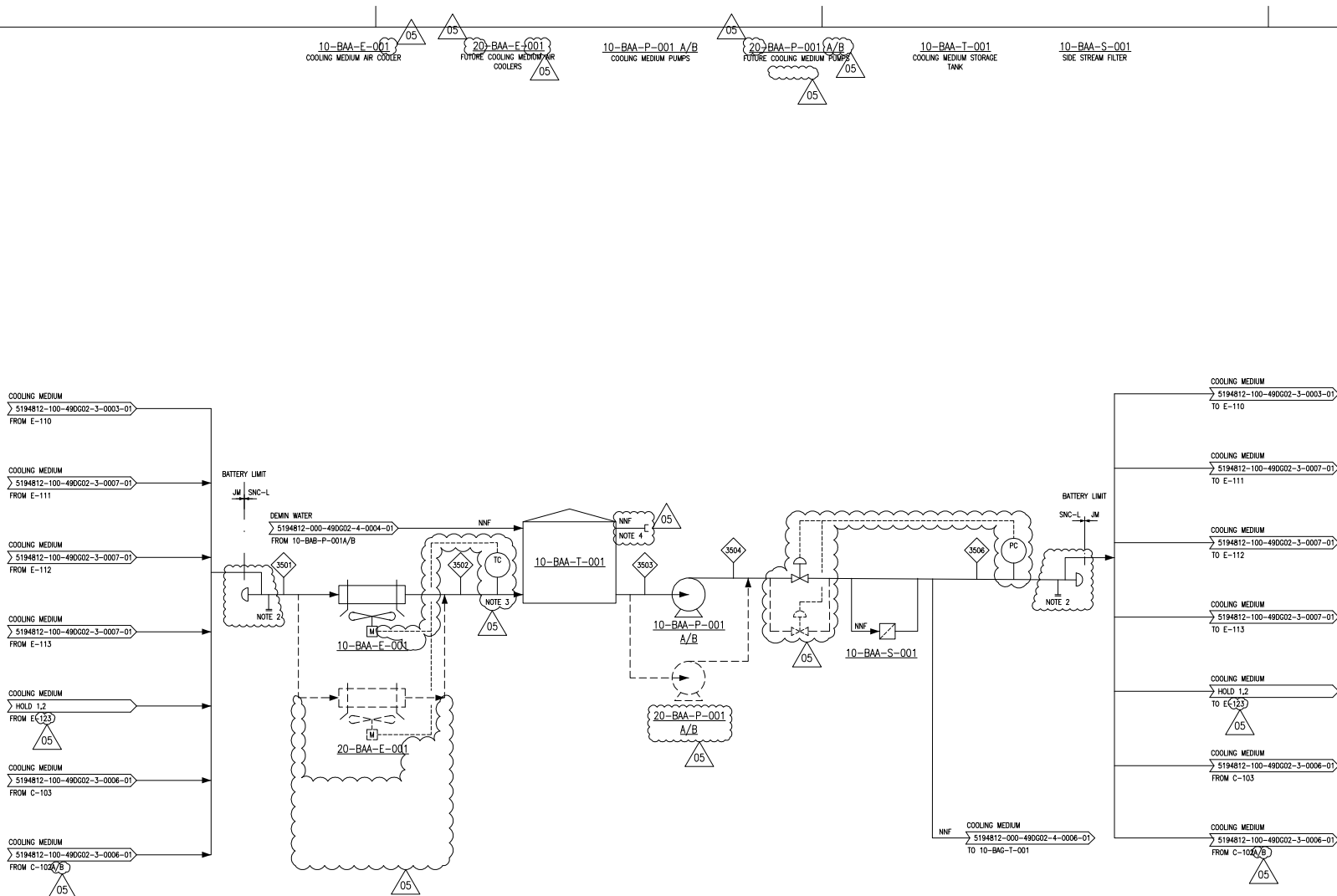
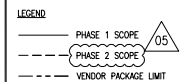


This document and the design it covers are the property of SNC-Lavalin. It can NOT be reproduced or communicated to any third party without prior written consent given by SNC-Lavalin.



- NOTES**
1. THE UFD'S SHOW BOTH PHASE 1 EQUIPMENT IN SOLID LINES AND FUTURE PHASE EQUIPMENT IN DASHED LINES. CONNECTIONS TO FUTURE HYDROGEN GENERATION TRAINS WILL BE ADDED DURING THE DESIGN AND ENGINEERING OF THOSE TRAINS. COMMON EQUIPMENT AND HEADERS TO BE DESIGNED FOR FULL PHASE 1 AND 2 FLOW.
 2. PHASE 2 TIE-IN CONNECTION.
 3. TEMPERATURE CONTROL ADJUSTS VARIABLE SPEED DRIVE ON THE UPSTREAM AIR COOLERS.
 4. TANKER CONNECTION FOR INITIAL FILL AND GLYCOL TOP UP.



- HOLDS**
1. JOHNSON MATTHEY PFD NUMBERS
 2. DELETED

REV.	DATE	REVISION DESCRIPTION	PREP'D	CHK'D	APP.
05	20/10/2020	ISSUED FOR USE		GJP	ROB MW
04	15/06/2020	RE-ISSUED FOR DESIGN		JB	RO MW
03	10/03/2020	ISSUED FOR DESIGN		JB	RO WW
02	02/03/2020	ISSUED FOR CONSORTIUM REVIEW		JB	RO MW
01	19/01/2020	ISSUED FOR IDC		JB	RO MW

SCALE	NTS	ORIGINAL DRAWING SIZE	A0
PROJECT			
LOW CARBON HYDROGEN (LCH) FEED			
TITLE			
UTILITY FLOW DIAGRAM COOLING MEDIUM			
PROJECT NO.	DRAWING NUMBER	REV	
5194812	5194812-000-49DG02-4-0003-01	05	