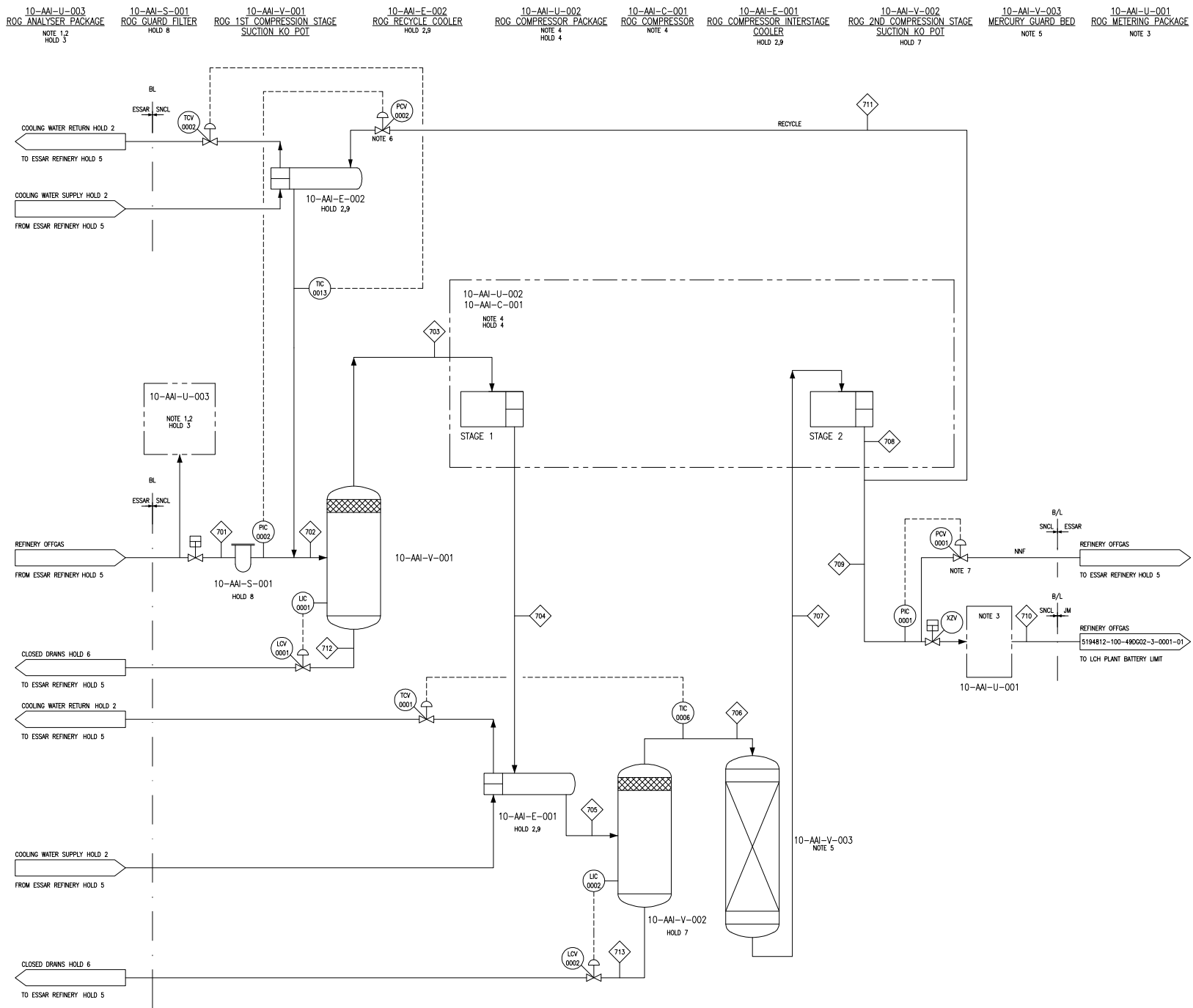


This document and the design it covers are the property of SNC-Lavalin. It can NOT be reproduced or communicated to any third party without prior written consent given by SNC-Lavalin.



- NOTES**
1. ONLINE ANALYSIS PACKAGE TO PROVIDE DATA ON ROG QUALITY AND COMPOSITION. TO BE USED TO STOP OFF SPEC ROG BEING SENT TO LCH PLANT AND GATHER DATA FOR OPERATIONAL PERFORMANCE FOR LCH PLANT.
 2. OFFLINE ANALYSIS POINT TO PROVIDE DATA ON ROG QUALITY AND COMPOSITION. TO BE USED TO STOP OFF SPEC ROG BEING SENT TO LCH PLANT AND GATHER DATA FOR OPERATIONAL PERFORMANCE FOR LCH PLANT.
 3. FISCAL METER PACKAGE.
 4. ROG COMPRESSOR 10-AAI-C-001 TO BE ELECTRIC MOTOR DRIVEN TWO STAGE RECIPROCATING TYPE. A MERCURY GUARD BED IS TO BE LOCATED BETWEEN THE FIRST AND SECOND STAGES OF COMPRESSION. REFER TO ROG COMPRESSOR SELECTION REPORT 5194812-000-4562-4-0005 FOR FURTHER DETAILS.
 5. MERCURY GUARD PURASPEC BED TO BE PROVIDED BY JOHNSON MATTHEY. ALL OTHER INTERNALS TO BE PROVIDED BY VENDOR.
 6. RECYCLE PROVIDED FOR COMPRESSOR SPILL BACK. TO BE CONFIRMED BY VENDOR.
 7. POV PROVIDED TO REGULATE COMPRESSOR DISCHARGE PRESSURE DURING UPSET, START-UP AND SHUTDOWN. TIE-IN LOCATION, EITHER TO FLARE OR RETURNED TO ESSAR PLANT TO BE CONFIRMED.

LEGEND
REFER TO LEGEND P&IDs 5194812-000-490010-4-0001-01 TO 0010-01.

- HOLDS**
1. LOCATION OF PACKAGE TO BE CONFIRMED.
 2. COOLING MEDIUM TO BE CONFIRMED.
 3. ANALYSIS TYPE AND ITS REQUIREMENT TO BE CONFIRMED.
 4. VENDOR PACKAGE SCOPE OF SUPPLY TO BE CONFIRMED.
 5. TIE-IN LOCATION TO BE CONFIRMED.
 6. UTILITIES TO BE CONFIRMED.
 7. REQUIREMENTS FOR SECOND KO POT TO BE CONFIRMED.
 8. REQUIREMENT FOR GUARD FILTER TO BE CONFIRMED.
 9. COOLER TYPE TO BE CONFIRMED.

REV.	DATE	REVISION DESCRIPTION	PREP'D	CHK'D	APP.
03	04/09/2020	ISSUED FOR USE	JGS	ROB	MW
02	04/06/2020	ISSUED FOR CONSORTIUM REVIEW	JGS	LC	ROB
01	18/05/2020	ISSUED FOR INTERNAL REVIEW	JGS	LC	MW

SCALE	NTS	ORIGINAL DRAWING SIZE	A0
PROJECT			
LOW CARBON HYDROGEN (LCH) FEED			
TITLE			
PROCESS FLOW DIAGRAM ROG COMPRESSOR SYSTEM			
PROJECT NO.	DRAWING NUMBER	REV	
5194812	5194812-700-49DG02-4-0001-01	03	