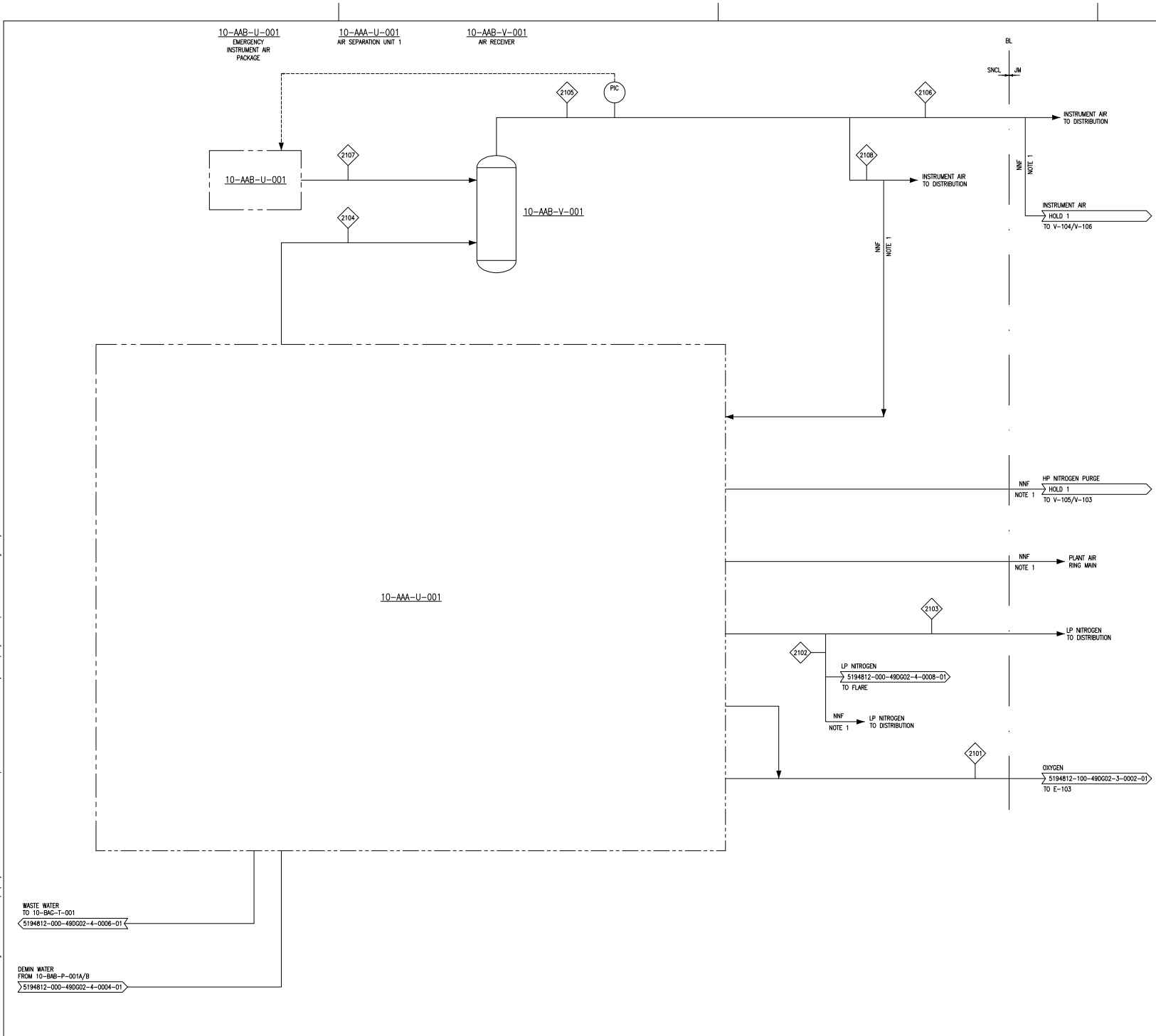


This document and the design it covers are the property of SNC-Lavalin. It can NOT be reproduced or communicated to any third party without prior written consent given by SNC-Lavalin.



**NOTES**

1. USED FOR ABNORMAL OPERATIONS (START-UP, SHUTDOWN AND EMERGENCY CONDITIONS) ONLY.
2. NITROGEN IS PRODUCED AS A BYPRODUCT DURING THE PRODUCTION OF OXYGEN WITHIN THE AIR SEPARATION UNIT (ASU); WHEN THE ASU IS IN OPERATION BYPRODUCT NITROGEN WILL BE ROUTED 10-AAB-V-01 FOR STORAGE AND SUBSEQUENT RE-USE DURING START-UP. ANY EXCESS NITROGEN WILL BE VENTED TO ATMOSPHERE.
3. THE UPD'S SHOW BOTH PHASE 1 EQUIPMENT IN SOLID LINES AND FUTURE PHASE EQUIPMENT IN DASHED LINES. CONNECTIONS TO FUTURE HYDROGEN GENERATION TRAINS WILL BE ADDED DURING THE DESIGN AND ENGINEERING OF THOSE TRAINS.

**LEGEND**

- PHASE 1 SCOPE
- - - - PHASE 2/3 SCOPE
- - - - VENDOR PACKAGE LIMIT

**HOLDS**

1. JOHNSON MATTHEY PFD NUMBERS
2. DELETED.
3. DELETED.

REV.	DATE	REVISION DESCRIPTION	PREP'D	CHK'D	APP.
05	28/08/2020	RE-ISSUED FOR DESIGN	YK	ROB	MW
04	10/06/2020	RE-ISSUED FOR DESIGN	JB	RO	MW
03	10/03/2020	ISSUED FOR DESIGN	JB	RO	MW
02	02/03/2020	ISSUED FOR CONSORTIUM REVIEW	JB	RO	MW
01	19/01/2020	ISSUED FOR IDC	JB	RO	MW

SCALE	NTS	ORIGINAL DRAWING SIZE	A0
PROJECT			
LOW CARBON HYDROGEN (LCH) FEED			
TITLE			
UTILITY FLOW DIAGRAM AIR SEPARATION UNIT 1			
PROJECT NO.	DRAWING NUMBER	REV	
5194812	5194812-000-49DG02-4-0002-01	05	