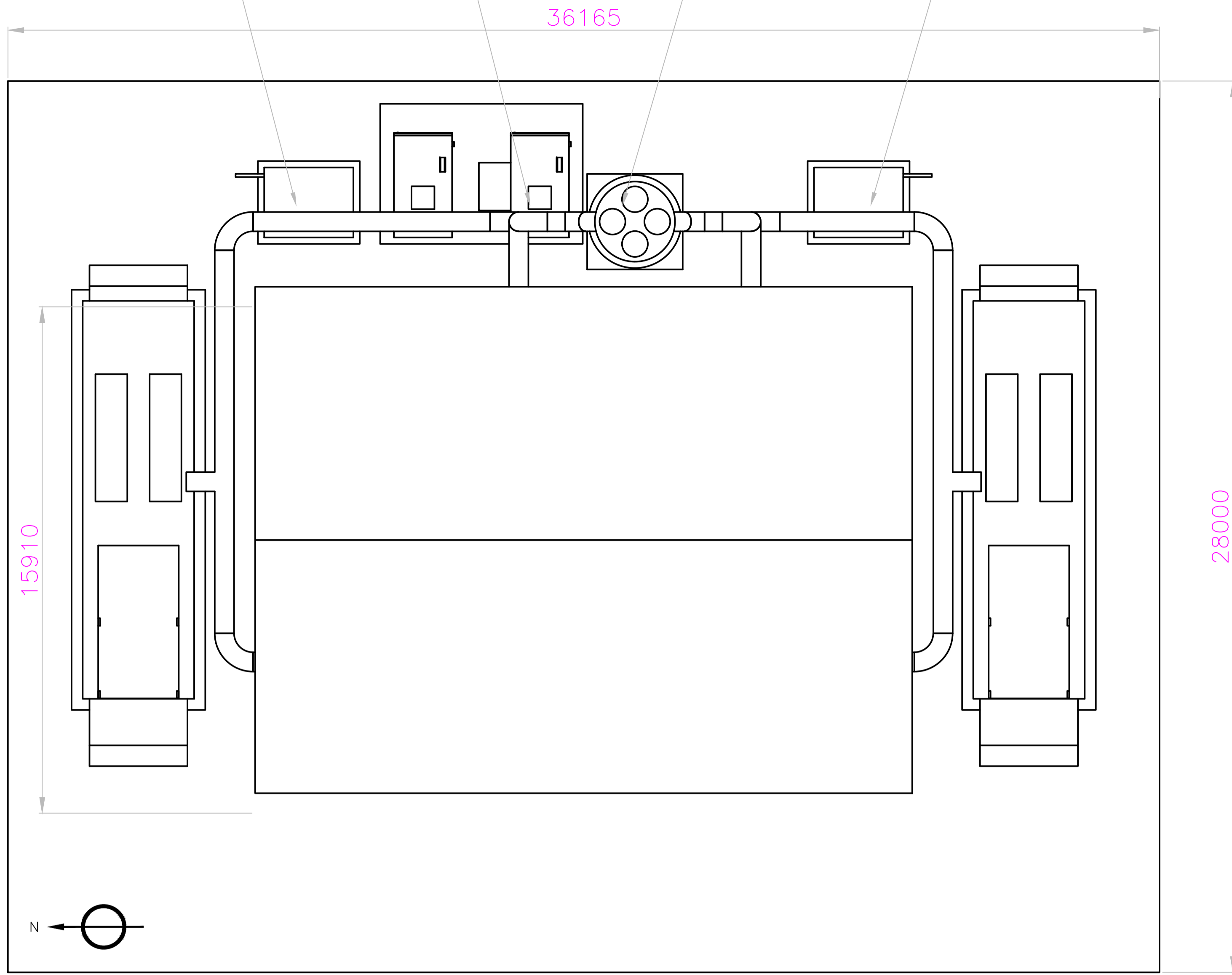
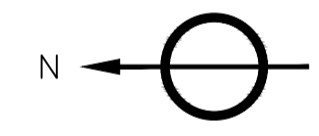
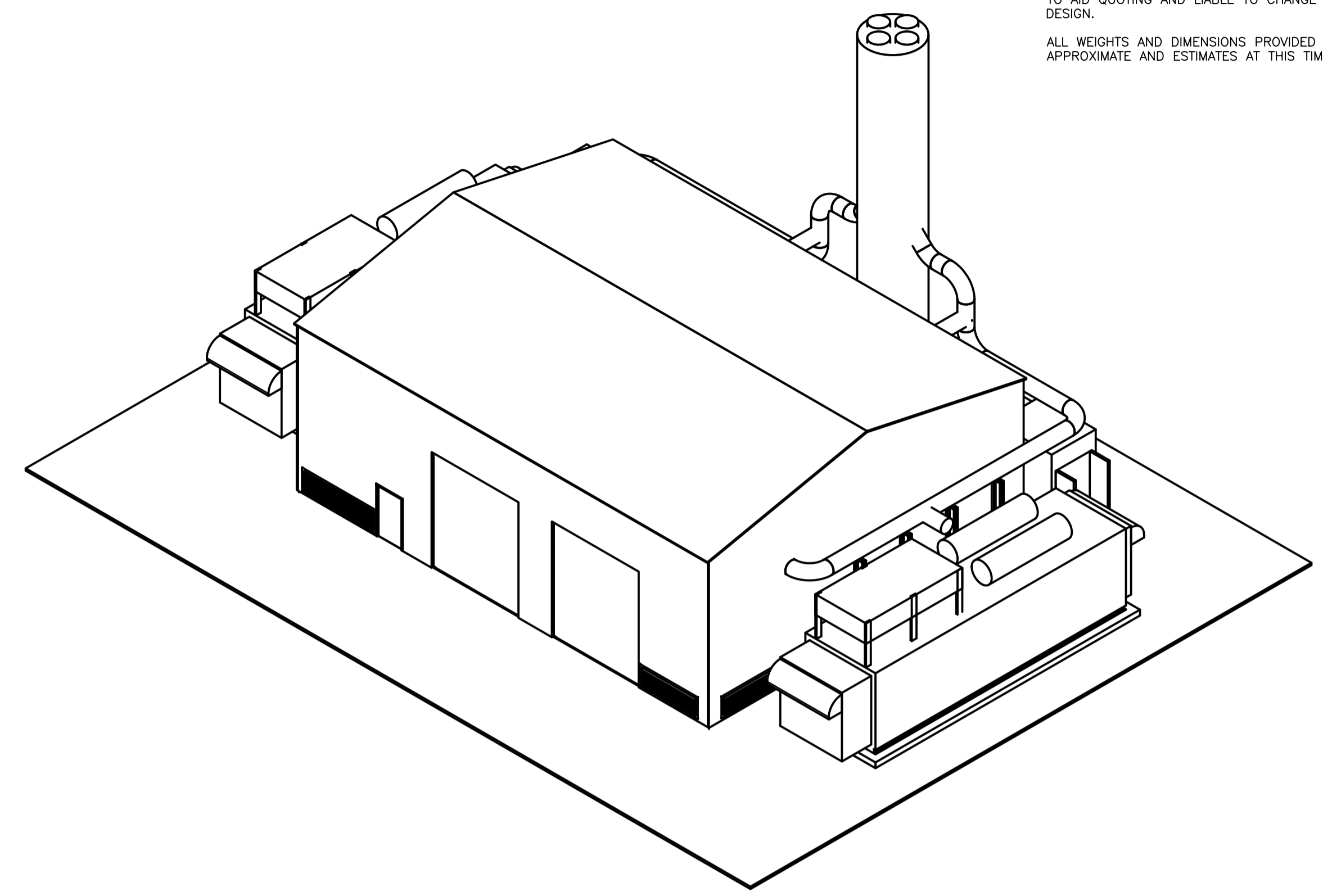


DATE	REV	DESC. REF.	GRID	DRN	CHK	APP.

HV SYNC BREAKER ENCLOSURE (ENGINE 1) CHIMNEY STACK OIL TANKS CLEAN & DIRTY HV SYNC BREAKER ENCLOSURE (ENGINE 2)

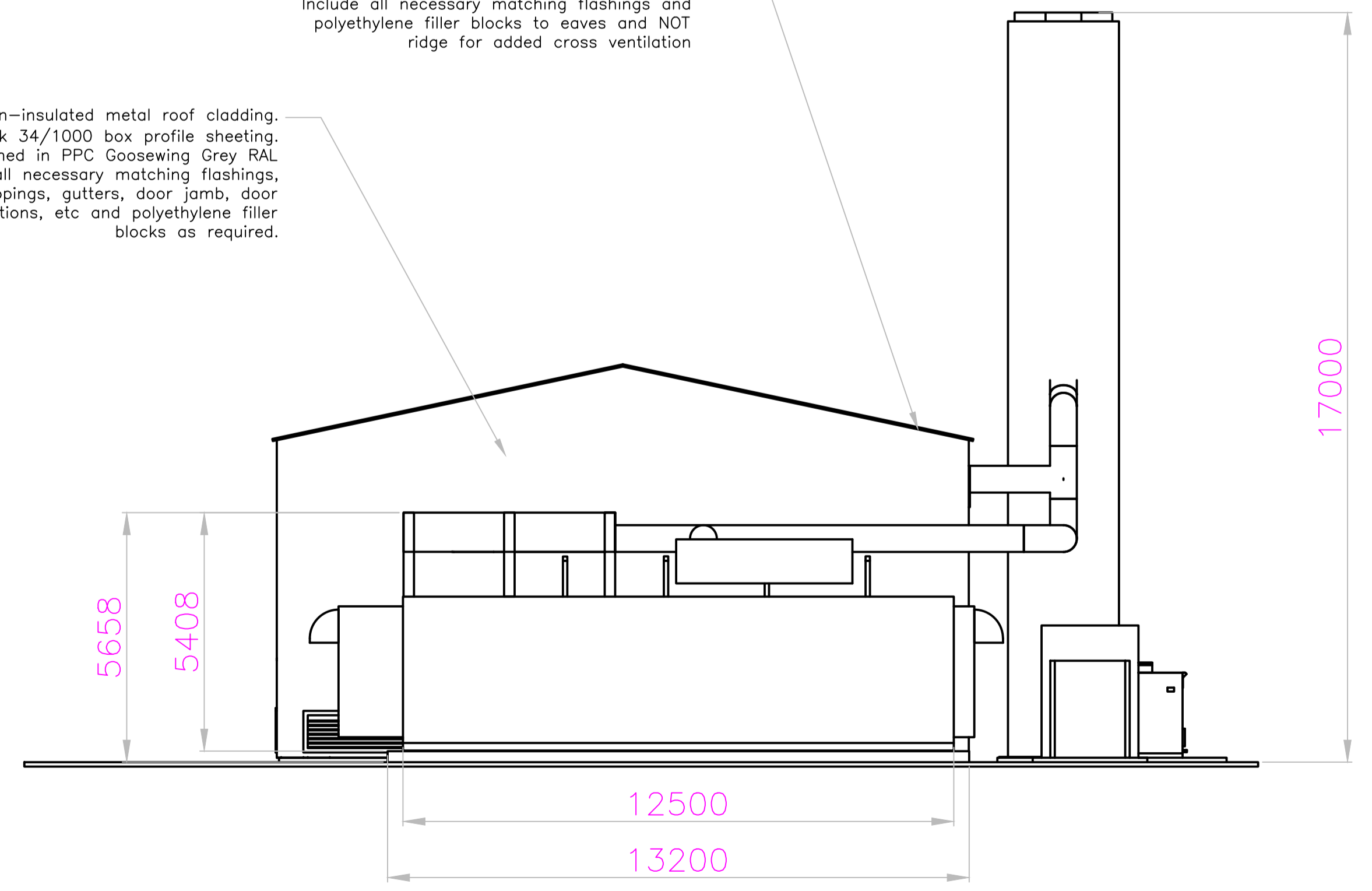
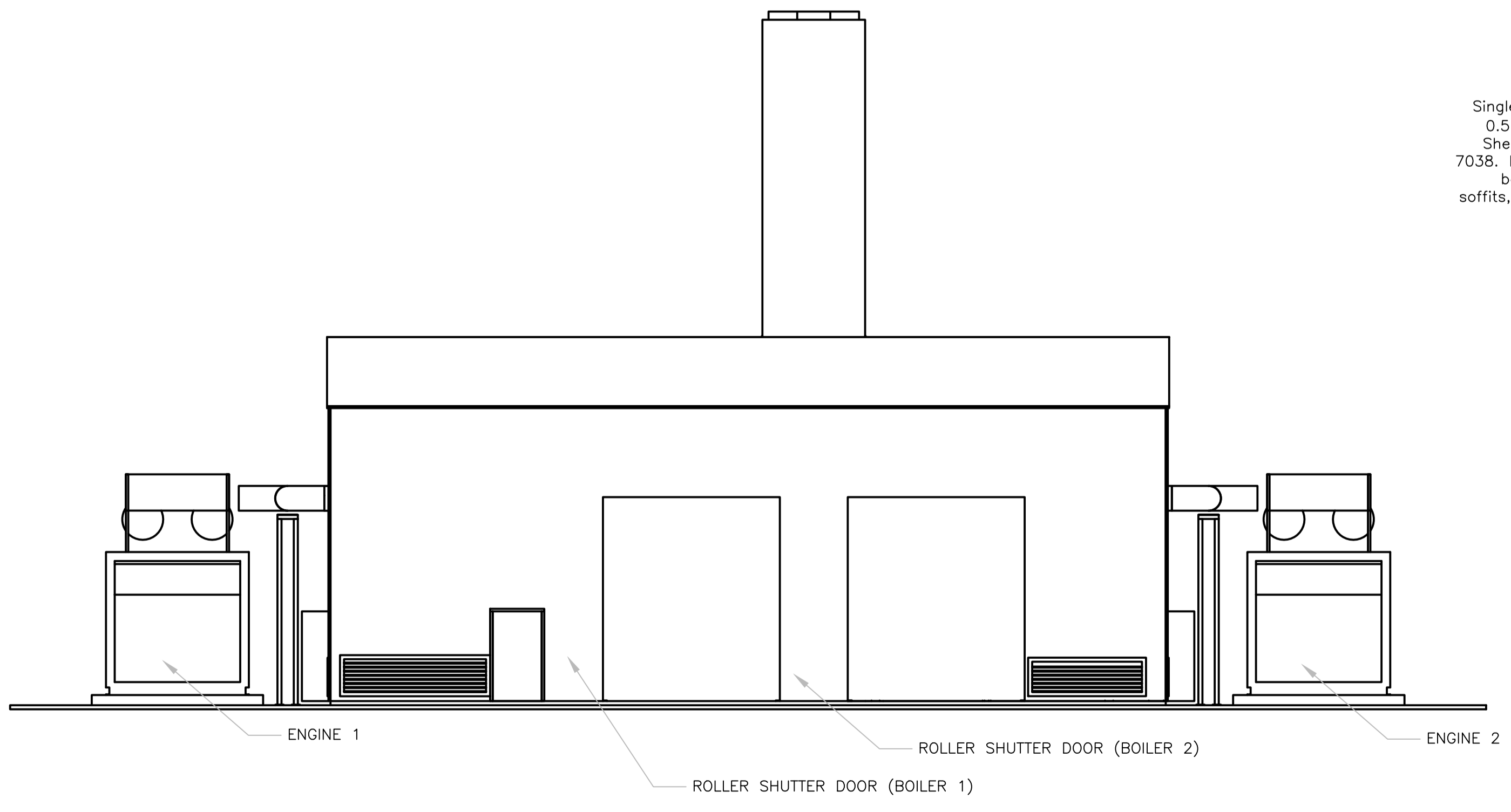


NOTES:
 THIS DRAWING IS INDICATIVE AND DOES NOT CONSTITUTE A FULL DESIGN SUITABLE FOR CONSTRUCTION.
 ANY STEELWORK SIZES OR CONSTRUCTIONAL DETAIL IS PROVIDED TO AID QUOTING AND LIABLE TO CHANGE SUBJECT TO FINAL DESIGN.
 ALL WEIGHTS AND DIMENSIONS PROVIDED FOR EQUIPMENT ARE APPROXIMATE AND ESTIMATES AT THIS TIME.



Single skin un-insulated metal roof cladding.
 0.7mm thick 34/1000 box profile roof sheeting with an anti condensation fleece membrane (PES fibres) applied to underside of roof sheets. (Dripstop or app'd sim), roof sheets finished in PPC Goosewing Grey RAL 7038. Include all necessary matching flashings and polyethylene filler blocks to eaves and NOT ridge for added cross ventilation

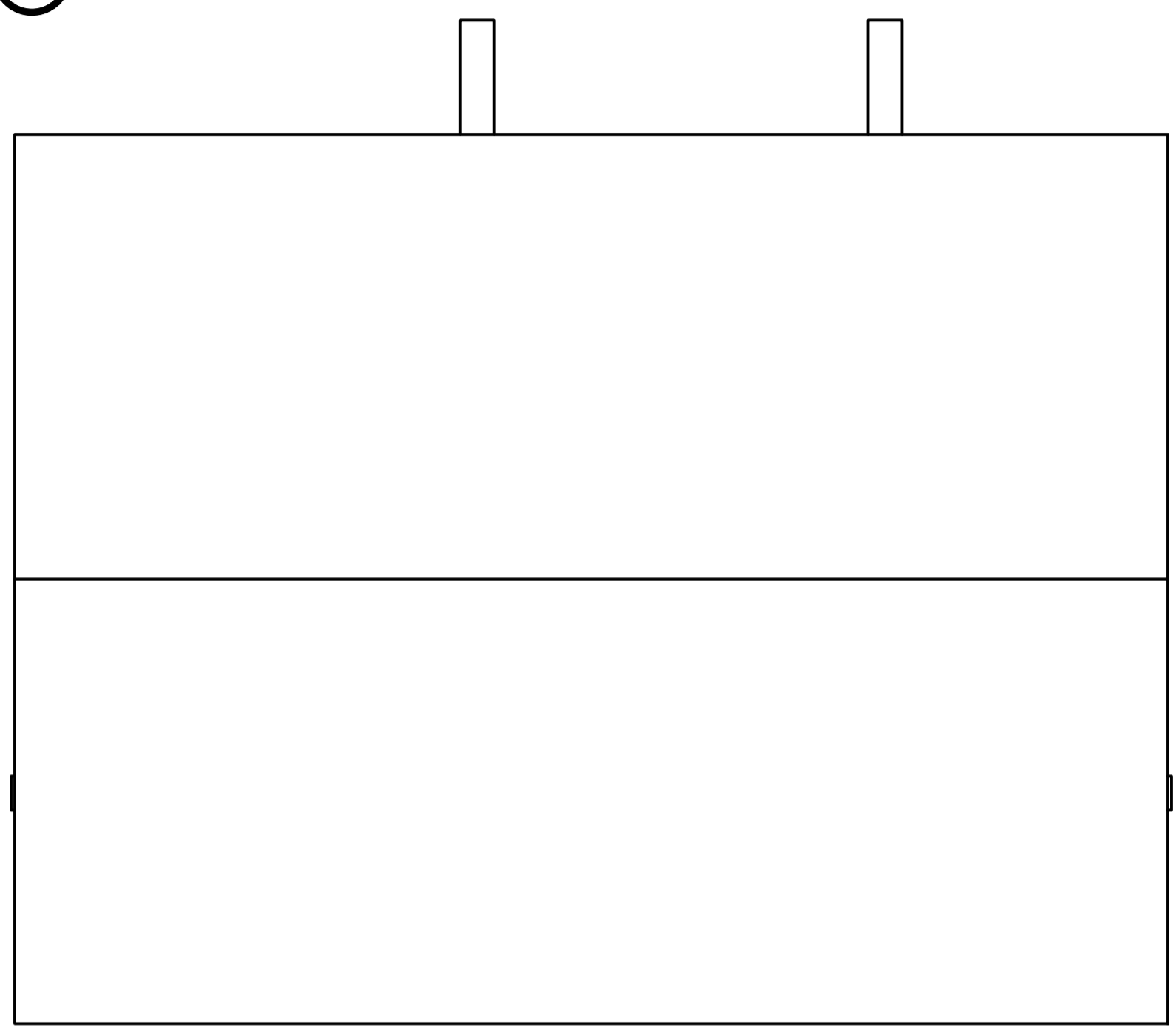
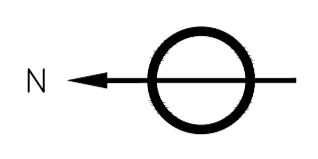
Single skin un-insulated metal roof cladding.
 0.5mm thick 34/1000 box profile sheeting. Sheets finished in PPC Goosewing Grey RAL 7038. Include all necessary matching flashings, barge cappings, gutters, door jamb, door soffits, cill sections, etc and polyethylene filler blocks as required.



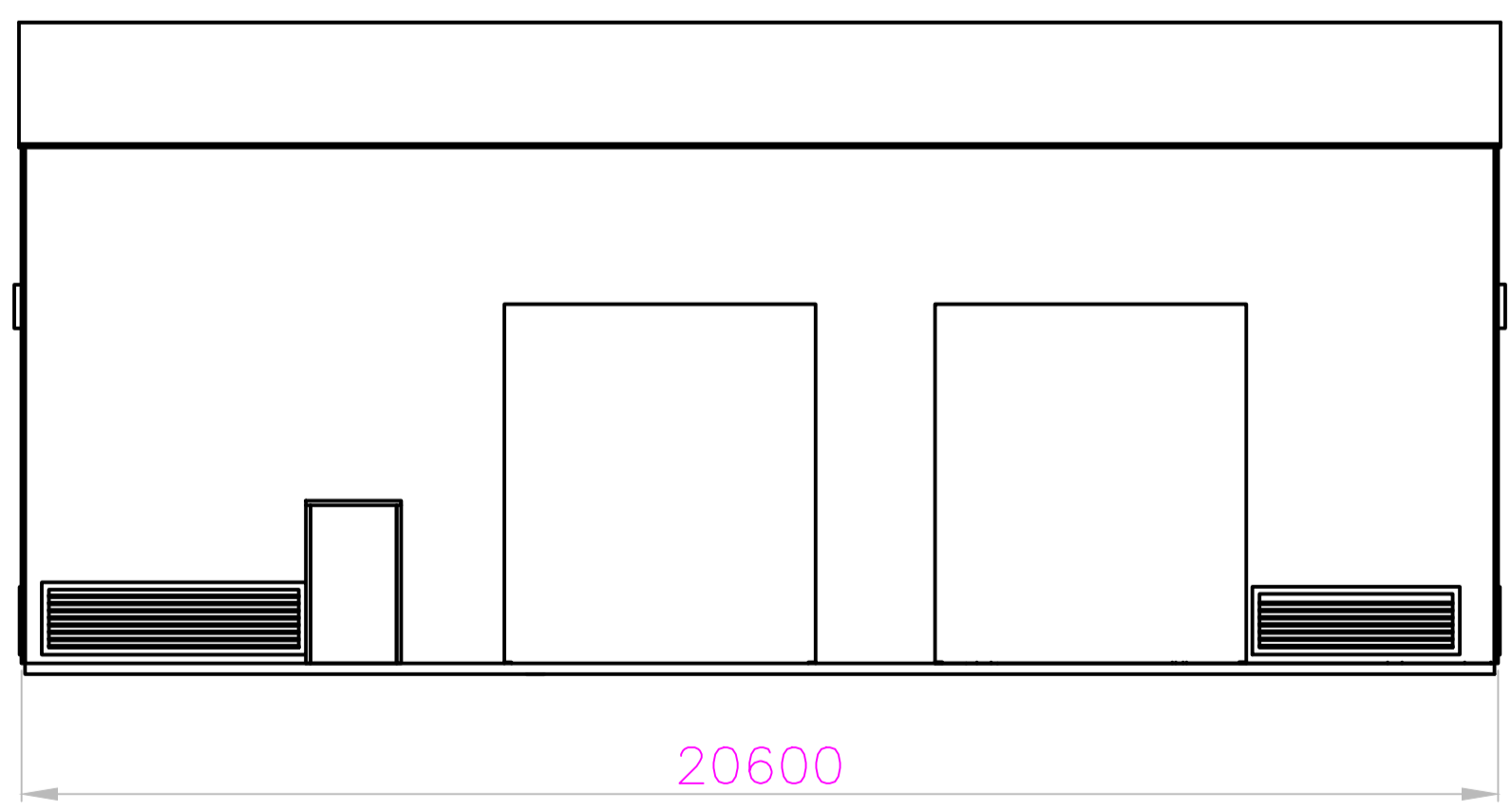
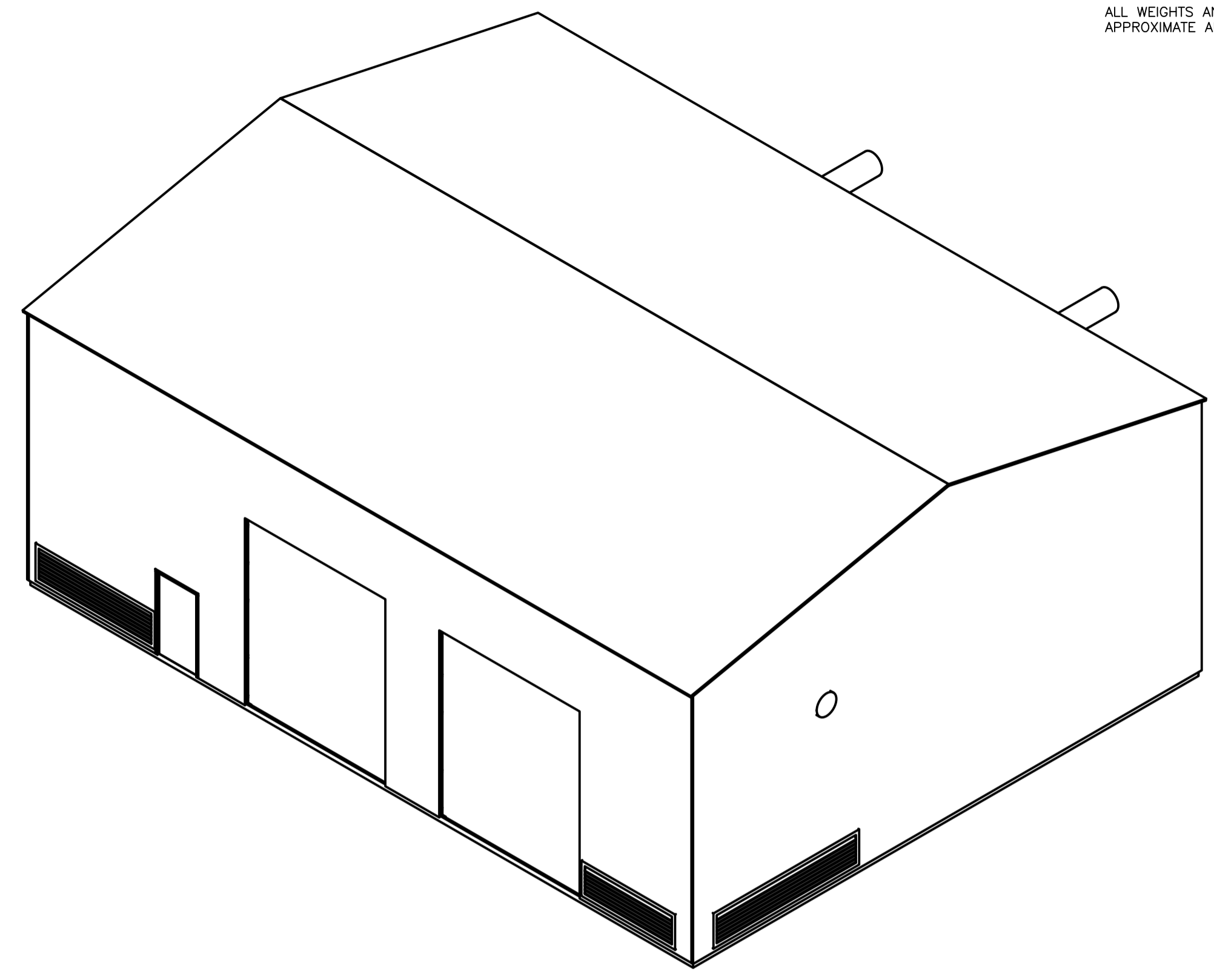
<p>THIS DOCUMENT IS THE PROPERTY OF VEOLIA LTD. NO PART MAY BE USED, COPIED OR REPRODUCED WITHOUT PRIOR WRITTEN PERMISSION</p>	<p>CHECKED BY: PC DATE CHECKED: 08/04/2022</p>	<p>UNLESS OTHERWISE SPECIFIED REFER TO BSBMS ALL DIMENSIONS ARE IN mm DIMENSIONAL TOLERANCES X.XX = ±0.2 X.XX.XX = ±0.1 ANGULAR TOLERANCE = ±1.0° REMOVE BURRS AND BREAK SHARP EDGES</p>	<p>VEOLIA</p>	<p>SCALE: 1:100</p>
<p>TITLE: 16021 Innospec - Ellesmere Port Energy Centre - General Arrangement</p>	<p>SHEET NO: A1</p>	<p>DATE: 1/2</p>	<p>PROJECT: 16021-250-2</p>	<p>REV: C</p>

DATE	REV	DESC. REF.	GRID	DRN	CHK	APP.
-/-/20	-	-	-	-	-	-

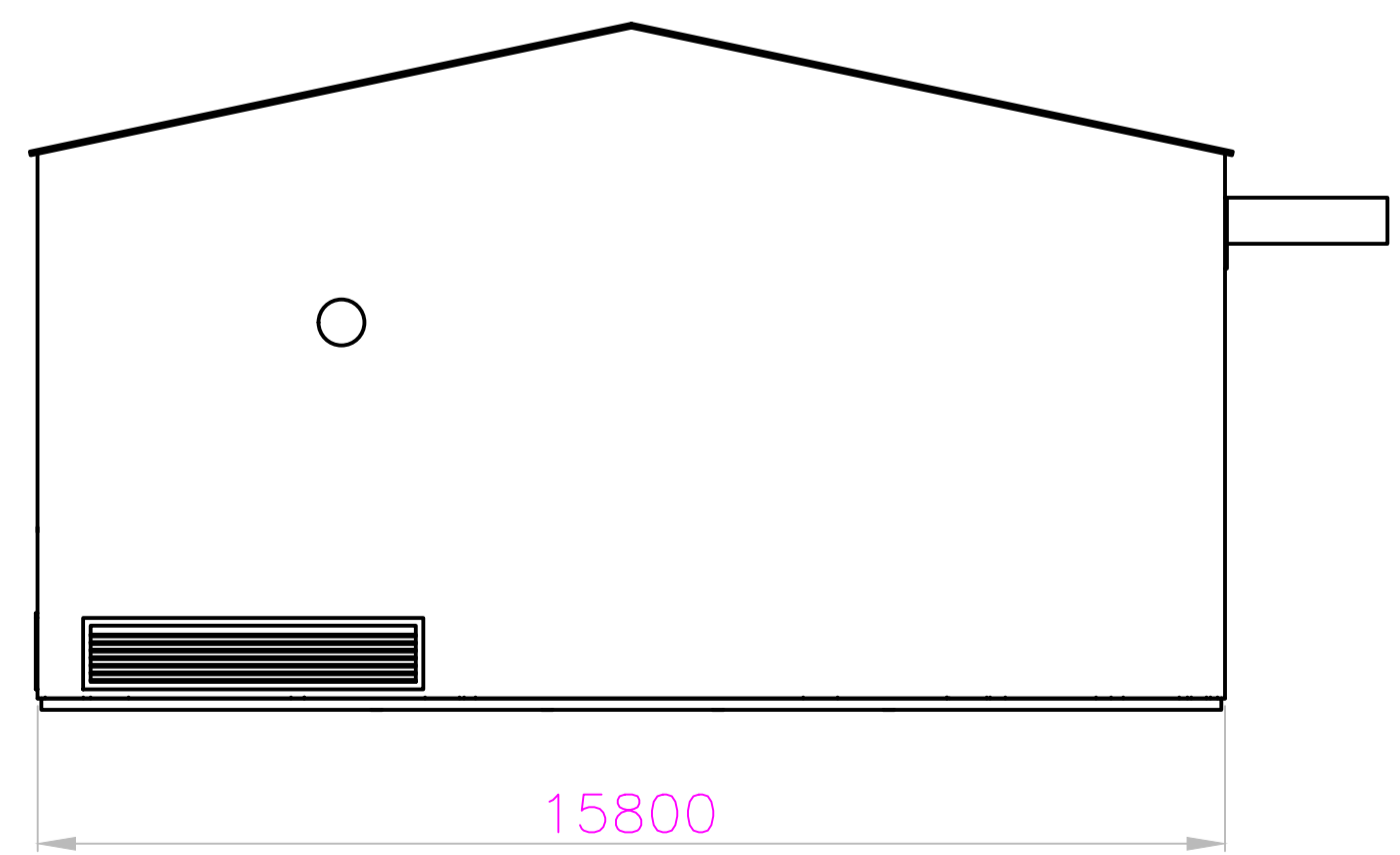
NOTES:
 THIS DRAWING IS INDICATIVE AND DOES NOT CONSTITUTE A FULL DESIGN SUITABLE FOR CONSTRUCTION.
 ANY STEELWORK SIZES OR CONSTRUCTIONAL DETAIL IS PROVIDED TO AID QUOTING AND LIABLE TO CHANGE SUBJECT TO FINAL DESIGN.
 ALL WEIGHTS AND DIMENSIONS PROVIDED FOR EQUIPMENT ARE APPROXIMATE AND ESTIMATES AT THIS TIME.



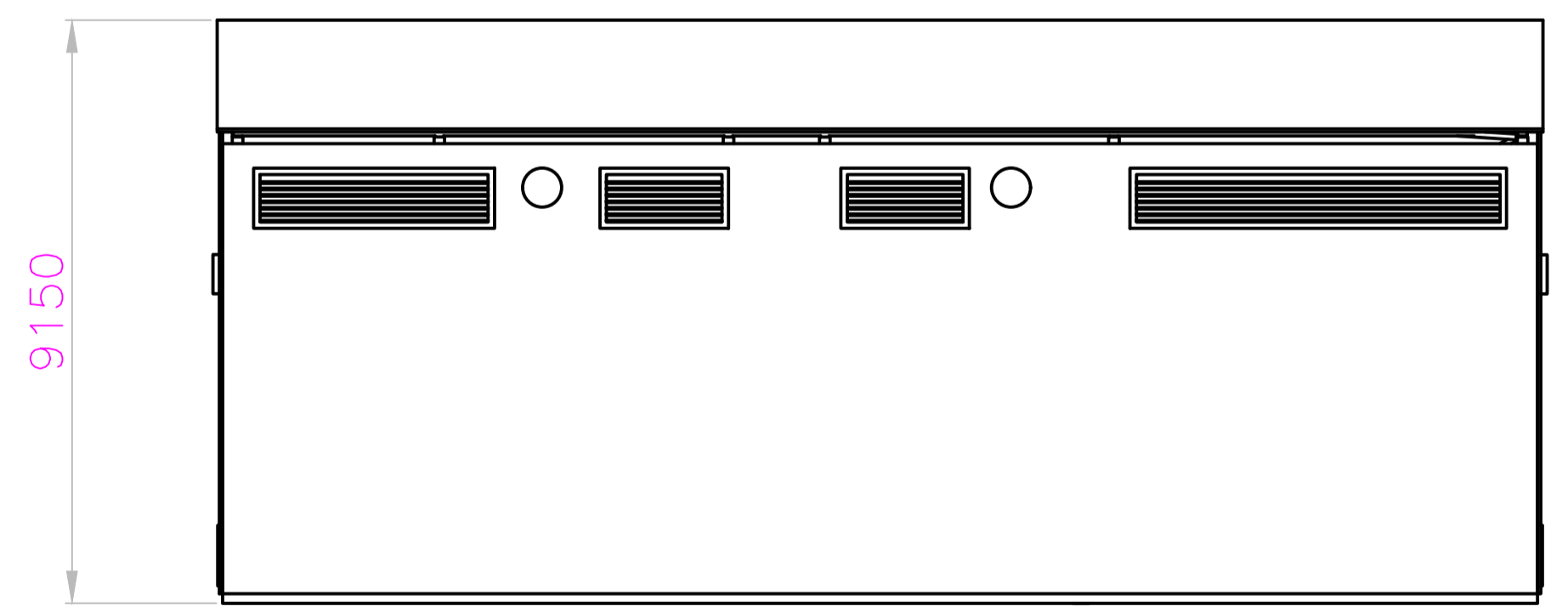
PLAN VIEW 1:100



FRONT VIEW 1:100



SIDE ELEVATION 1:100



REAR ELEVATION 1:100

<small>THIS DOCUMENT IS THE PROPERTY OF VEOLIA LTD. NO PART MAY BE USED, COPIED OR REPRODUCED WITHOUT PRIOR WRITTEN PERMISSION.</small>	<small>CHECKED BY</small> <small>DATE CHECKED</small> <small>DRAWN BY</small> <small>DATE DRAWN</small>	<small>SPECIFIED UNLESS OTHERWISE REFER TO BS8888 ALL DIMENSIONS ARE IN mm</small> <small>DIMENSIONAL TOLERANCES</small> <small>REMOVE BURRS AND BREAK SHARP EDGES</small>	<small>VEOLIA</small>	<small>WEDGOT</small> <small>SHEET SIZE</small> <small>TITLE</small> <small>DRAWING NO.</small>	<small>MATERIAL</small> <small>FINISH</small> <small>16021 Innospec - Ellesmere Port Energy Centre - General Arrangement</small> <small>16021-250-2</small>	<small>SCALE 1:100</small> <small>IN COURT ASK</small> <small>REV</small>
	<small>PC</small>	<small>N/A</small> <small>A1</small> <small>Energy Centre - General Arrangement</small> <small>2/2</small>	<small>N/A</small> <small>N/A</small> <small>16021-250-2</small>	<small>C</small>		
	<small>08/04/2022</small>					