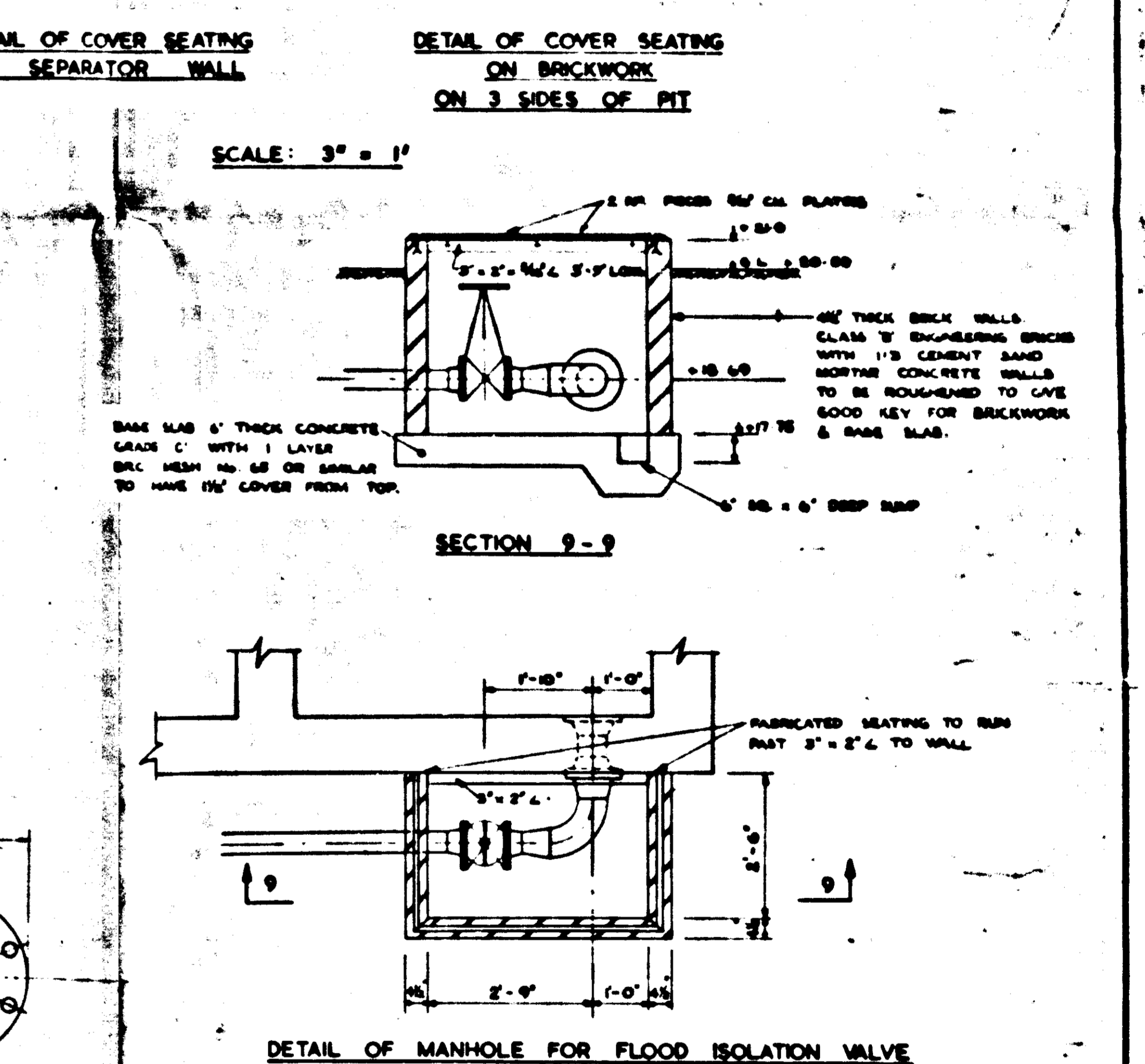
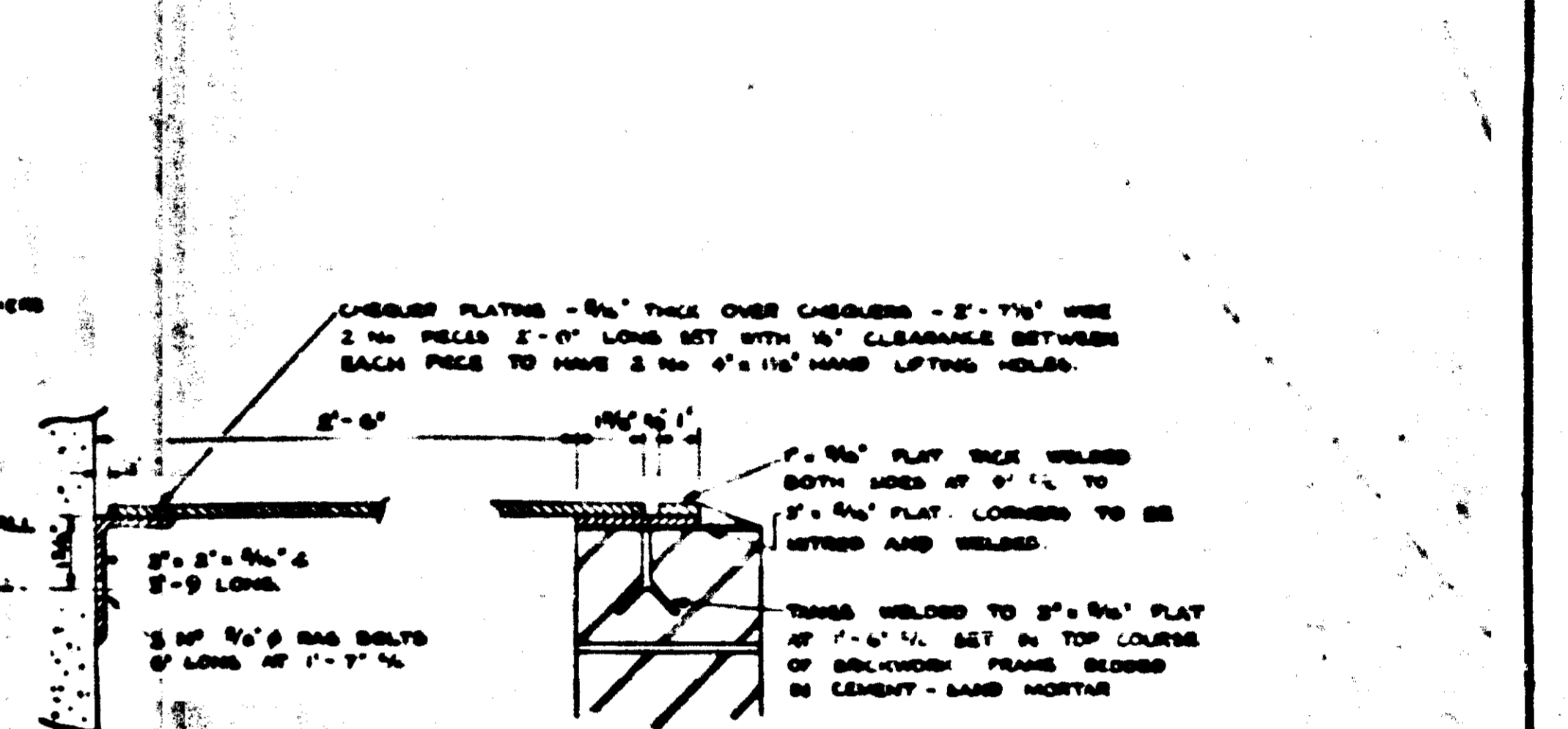


NOTES

1. THIS DRAWING TO BE READ IN CONJUNCTION WITH ONE OF EACH OF THE FOLLOWING:
 - (a) MAIN & AUXILIARY SKIM PIPE ASSEMBLY, (b) THE SITE PLAN OF RED LEAD TRAP-LINE WORK ASSEMBLY, (c) SUTHERLAND'S WORKING DRAWING ASSEMBLY.
2. OPERATING HANDSHELD OUTLET WEIR PLATES SHALL BE FINISHED WITH AN OPERATING HANDSHELD FINISH.
3. SUPPLY STEELWORK FINISHED OPERATING WEIR PLATES AND BRACKETS SHALL BE FINISHED WITH AN OPERATING HANDSHELD FINISH.
4. ALL STEEL AND PIPE STRUCTURAL STEELWORK AND GENERAL WORK SHALL BE CARBON STEEL CLASS B WITH HEAVY (HEAVY) SERIES HEADS AND NUTS AND UNFED COARSE THREADS BS 7000 PART 3. (b) BOLTS AND NUTS FOR ASSEMBLY SHALL BE CARBON STEEL CLASS B WITH HEAVY (HEAVY) SERIES HEADS AND NUTS AND UNFED COARSE THREADS BS 7000 PART 3.
5. HANDRAILS FITTINGS TO BE USED SHALL BE OF THE TYPE AS SHOWN ON SHEET 2 OF THIS DRAWING AND SHALL BE FITTED WITH FEMALE BUSH BOLTS AND SPLICED TOGETHER WITH MALE BUSH BOLTS.



3 AUG 1961

317366

SHELL REFINING CO LTD	
STANLOW REFINERY	TRANMERE TANK FARM
TITLE OF DRAWING: INTERCEPTOR DETAILS OF SKIM PIPES & ASSOCIATED EQUIPMENT-SHEET 2	
SCALE: 1/4" = 1' - 0"	
SIR BRUCE WHITE, WOLFE BARRY & PARTNERS.	
DRAWING No. S.R.C.T./103	
REMARKS:	
AS MADE DRAWING	