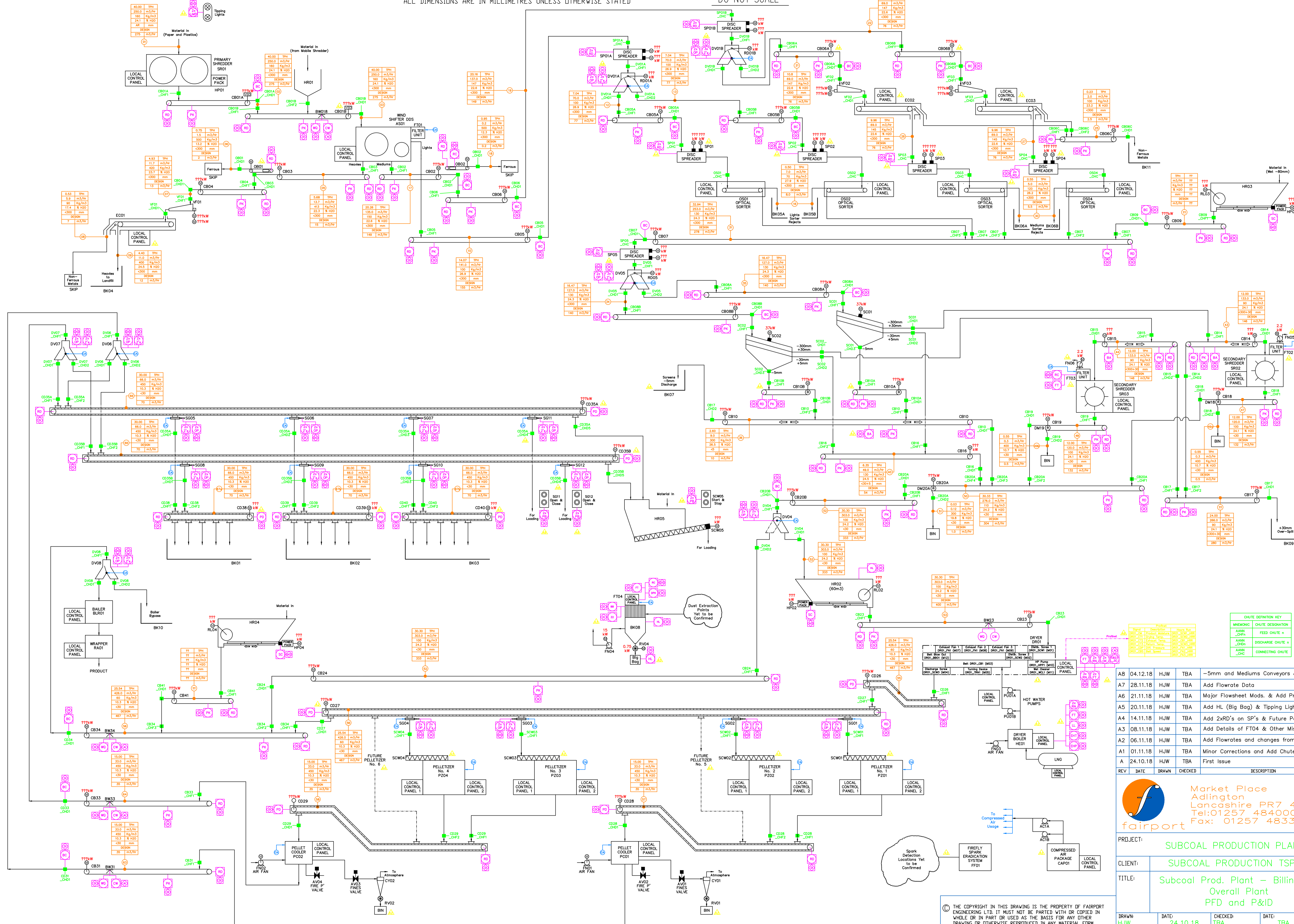


ALL DIMENSIONS ARE IN MILLIMETRES UNLESS OTHERWISE STATED

DO NOT SCALE



CHUTE DEFINITION KEY

WHEADING	CHUTE DESIGNATION
ANN	FEED CHUTE
ANN	DISCHARGE CHUTE
ANN	CONNECTING CHUTE

REV	DATE	DRAWN	CHECKED	DESCRIPTION
A8	04.12.18	HJW	TBA	-5mm and Mediums Conveyors & Misc.
A7	28.11.18	HJW	TBA	Add Flowrate Data
A6	21.11.18	HJW	TBA	Major Flowsheet Mods. & Add Profinet Layer
A5	20.11.18	HJW	TBA	Add HL (Big Bag) & Tipping Lights
A4	14.11.18	HJW	TBA	Add 2xRD's on SP's & Future Pelletizers
A3	08.11.18	HJW	TBA	Add Details of FT04 & Other Misc. Changes
A2	06.11.18	HJW	TBA	Add Flowrates and changes from Mtng.
A1	01.11.18	HJW	TBA	Minor Corrections and Add Chutes
A	24.10.18	HJW	TBA	First Issue

Market Place  
Adlington  
Lancashire PR7 4EZ  
Tel: 01257 484000  
Fax: 01257 483312

PROJECT: SUBCOAL PRODUCTION PLANT  
CLIENT: SUBCOAL PRODUCTION TSP  
TITLE: Subcoal Prod. Plant - Billingham Overall Plant PFD and P&ID

DRAWN	DATE	CHECKED	DATE	CAD SIZE
HJW	24.10.18	TBA	TBA	A1
SCALE: NTS	DRAWING No. 7224-1000-003		REV: AB	

THE COPYRIGHT IN THIS DRAWING IS THE PROPERTY OF FAIRPORT ENGINEERING LTD. IT MUST NOT BE PARTED WITH OR COPIED IN WHOLE OR IN PART OR USED AS THE BASIS FOR ANY OTHER DRAWING OR OTHERWISE REPRODUCED IN ANY MATERIAL FORM WHATSOEVER WITHOUT THE CONSENT IN WRITING OF FAIRPORT ENGINEERING LTD. IT IS THE PROPERTY OF FAIRPORT ENGINEERING LTD. AND MUST BE RETURNED TO THEM ON DEMAND.