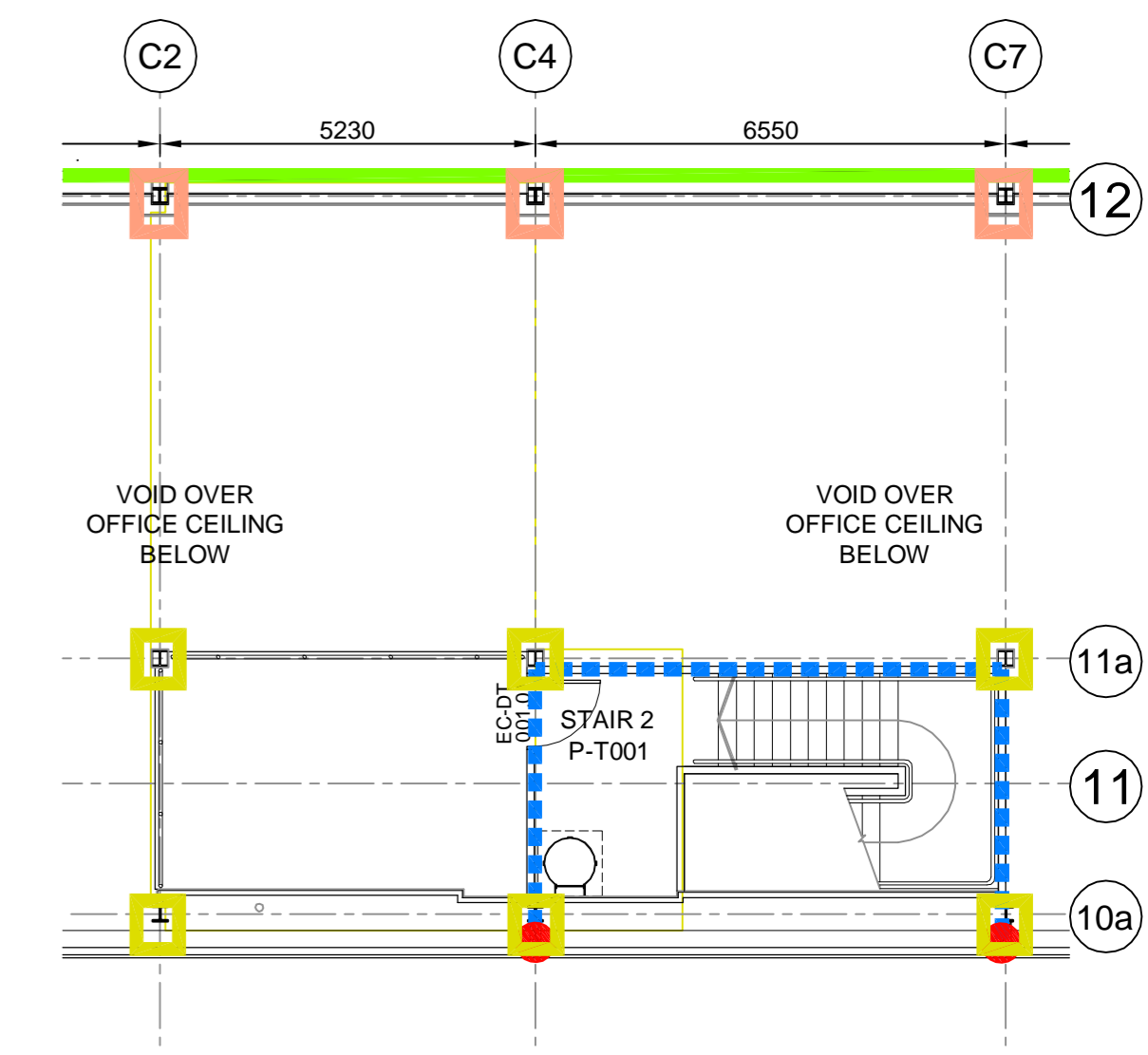
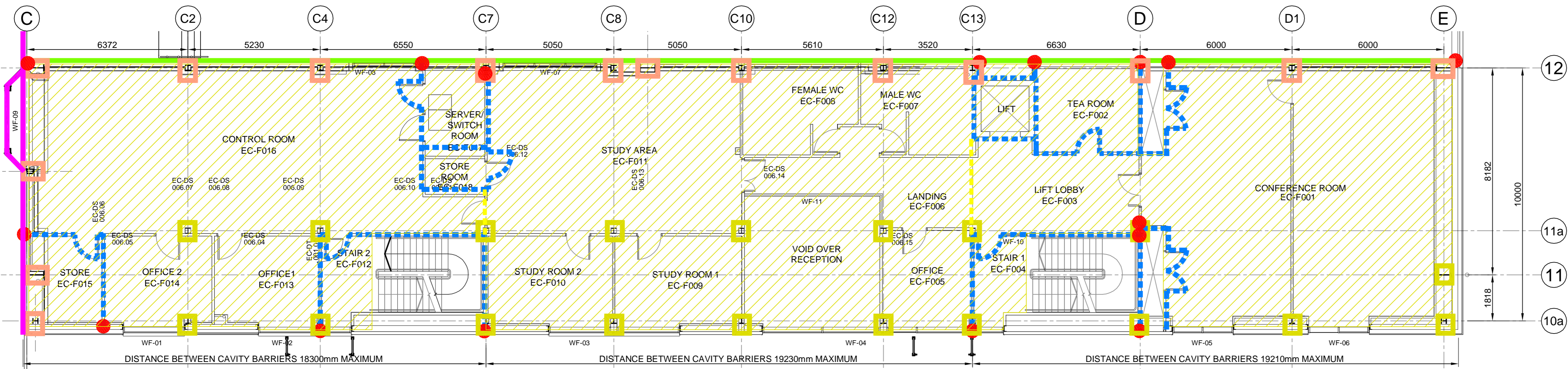


SECOND FLOOR



THIRD FLOOR



FIRST FLOOR

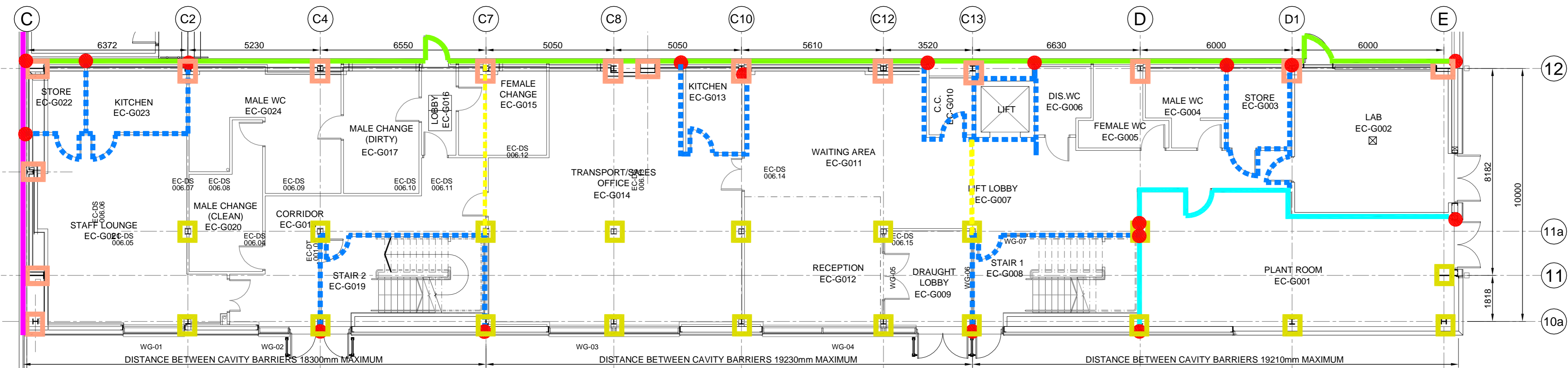
© 2008 RPS Newark

notes :

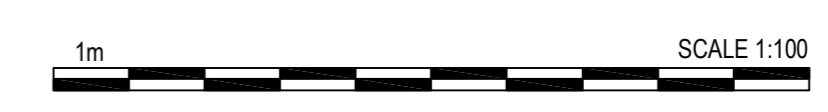
- If this drawing has been received electronically it is the recipient's responsibility to print the document to the correct scale.
- All dimensions are in millimetres unless stated otherwise. It is recommended that information is not scaled off this drawing.
- This drawing should be read in conjunction with all other relevant drawings and specifications.

KEY

- 1 HOUR FIRE RATING FLOOR CONSTRUCTION
- 1 HOUR FIRE RATED COMPARTMENT BLOCKWORK, FIRE STOPPED AT JUNCTIONS (SUBJECT TO BUILDING REGULATIONS APPROVAL & INSURERS APPROVAL)
- 2 HOUR FIRE RATED COMPARTMENT WHITEWALL FULL HEIGHT FROM FLOOR/FLOOR, FIRE STOPPED AT JUNCTIONS (SUBJECT TO BUILDING REGULATIONS APPROVAL & INSURERS APPROVAL)
- 2 HOUR FIRE RATED COMPARTMENT CLADDING FULL HEIGHT FROM FLOOR/COMPOSTING HALL ROOF, FIRE STOPPED AT JUNCTIONS (SUBJECT TO BUILDING REGULATIONS APPROVAL & INSURERS APPROVAL)
- 1/2 HOUR FIRE RATED COMPARTMENT WALL FULL HEIGHT FROM FLOOR/FLOOR, FIRE STOPPED AT JUNCTIONS
- FIRE STOPPING REQUIRED TO MAINTAIN INTEGRITY OF COMPARTMENT WALL
- 1 HOUR FIRE PROTECTED COLUMN
- 2 HOUR FIRE PROTECTED COLUMN
- CAVITY BARRIERS TO CEILING VOID TO PROVIDE 30 MINUTES FIRE RESISTANCE - ENVIROGRAF FS30 MINUTE FIRE BARRIER CURTAIN OR SIMILAR APPROVED, IN CEILING VOID TO BE FIXED TO UNDERSIDE OF ROOF AND DRAPED ON / FIXED TO TOP OF SUSPENDED CEILING. TO BE INSTALLED STRICTLY TO MANUFACTURERS RECOMMENDATION.



GROUND FLOOR



Final Issue

D	Drawing status revised to FINAL ISSUE.	SG	RS	25.09.09
C	2 hour fire protected compartmentation walls to be provided. Steelwork protection on layouts and key updated to suit. Cavity barrier location and dimensions clarified.	SJLH	RS	24.11.08
B	Updated to suit new layout	BOB	RS	22.08.08
A	Compartment Walls 1 hour fire protection	BOB	RS	02.06.08
rev	amendments	by	ckd	date
<p>Sherwood House Sherwood Avenue Newark, Nottinghamshire NG24 1QG</p> <p>T +44 (0) 1636 605 700 F +44 (0) 1636 610 696 W www.rpsgroup.com E rpsnewark@rpsgroup.com</p>				
<p>Client: Waste Management Park Waterbeach, Cambridgeshire</p> <p>Project: Education Centre Fire Compartmentation Plans</p> <p>Title: Education Centre Fire Compartmentation Plans</p>				
<p>Drawing Status: FINAL ISSUE</p> <p>Project Leader: AWY</p>		<p>Date Created: September 2007</p> <p>Drawn By: CC</p>		<p>Drawing Scale: 1:100</p> <p>Initial Review: RS</p>
<p>Drawing Number: 14942 / A1 / 5400</p>				<p>Rev: D</p>