

NON-TECHNICAL SUMMARY

Rockcliffe Industrial Estate, Rockcliffe, Carlisle CA6 4RW

North West Recycling Ltd

Version:	1.3	Date:	25th March 2025		
Doc. Ref:	634-004-C	Author(s):	IA/DY	Checked:	NWR
Client No:	634	Job No:	004		



Oaktree Environmental Ltd

Waste, Planning & Environmental Consultants



Oaktree Environmental Ltd, Lime House, 2 Road Two, Winsford, Cheshire, CW7 3QZ
Tel: 01606 558833 | E-Mail: sales@oaktree-environmental.co.uk | Web: www.oaktree-environmental.co.uk
REGISTERED IN THE UK | COMPANY NO. 4850754

Document History:

Version	Issue date	Author	Checked	Description
1.0	28/03/2023	IA	---	Internal draft
1.1	24/09/2024	IA/DY	NWR	Second draft
1.2	29/10/2024	IA/DY	NWR	Application copy
1.3	25/03/2025	IA/DY	NWR	Amended to provide clarification on single SRF process line, tonnages and reference to DMP

CONTENTS

DOCUMENT HISTORY:	I
CONTENTS	II
LIST OF TABLES	III
1 INTRODUCTION	1
1.1 NOTE	1
2 APPLICATION PROPOSALS	2
2.1 VARIATION PROPOSALS	2
2.2 PHASED APPROACH	2
3 TYPES OF ACTIVITIES	4
4 EWC CODES	5
5 ENVIRONMENTAL RISKS AND CONTROLS	6
6 DOCUMENTATION	7

List of Tables

Table 3.1 – Changes to Existing Activities4
Table 6.1 – Application Form Reference Table 8

1 Introduction

1.1 Note

- 1.1.1 This Non-Technical Summary (NTS) accompanies an application for the variation of permit no. EPR/DP3393LV which is held by North West Recycling Ltd. The Environmental Permit (EP) is currently in place for a waste recycling operation situated at Rockcliffe Industrial Estate, Rockcliffe, Carlisle CA6 4RW.

2 Application proposals

2.1 Variation proposals

2.1.1 The operator holds an existing EP for the operation of a waste recycling facility for the receipt and recycling of Household, Commercial and Industrial Wastes. Part of the existing process includes the separation of non-recyclable wastes with significant calorific value, which are then shredded and processed into a Solid Recovered Fuel (SRF), which is sent to suitably licenced energy recovery facility.

2.1.2 The operator proposes to increase the permitted volume of material that is pre-treated for incineration above 75 tonnes/day. As such, this will be classed as an installation activity under the Environmental Permitting (England and Wales) Regulations 2016 (as amended) (“the regulations”). A variation to the existing EP is therefore required to include the following installation activity within the permit, in accordance with the permitting regulations:

2.1.3 Schedule 1, Part 2, Section 5.4 Part A(1)(b)(ii) – pre-treatment of waste for incineration or co-incineration.

2.1.4 Other waste recycling activities undertaken on site will remain as described within the existing EP. However, an increase in throughout for non installation activities is also proposed.

2.2 Phased Approach

2.2.1 The operator is seeking to upgrade the SRF production line within Unit B under a two-phased approach which has been discussed and agreed with the Environment Agency (EA) as part of an enhanced pre-application request.

- i) **Phase 1:** The first phase will allow the operator to operate one SRF production line within Unit B which will accept 174,175 tonnes of waste/annum. The proposed waste throughput for non-installation waste activities within Unit A and external

soils and aggregates processing will be 225,825 tonnes/year, resulting in an overall throughput of 400,000 tonnes/annum across all activities on-site during Phase 1.

- ii) **Phase 2:** The second phase will be to extend Unit B and install two feed lines into the single SRF production line within Unit B. This will increase the throughput in Unit B to 374,175 tonnes/annum. The throughput of the waste operations within Unit A and external soils and aggregates processing will remain at 225,825 tonnes per year. The overall site throughput will be 600,000 tonnes/annum across all activities undertaken at the site during Phase 2.

2.2.2 Layout plans are included within Appendix I.

3 Types of activities

3.1 The table below makes reference to Table 1a - Types of activities from Application Form Part C3. This confirms activities which are proposed as part of this variation application. Tonnages included within the table below are based on Phase 2 of the development.

Table 3.1 – Changes to Existing Activities

Installation Name	Schedule 1 References	Description of the Proposed Activity	Annex II (R Codes)	Hazardous Waste Treatment Capacity	Non-hazardous Waste Treatment Capacity	Limits of Specified Activity and Waste Types
North West Recycling Ltd - EPR/DP3393LV	Part 2 Section 5.4 A(1) (b) (ii)	Recovery or a mix of recovery and disposal of non-hazardous waste with a capacity exceeding 75 tonnes per day involving pre-treatment of waste for incineration or co-incineration. Wastes received to Unit B.	R3	No hazardous waste to be treated	1,680 tonnes/day	Physical treatment of solid non-hazardous waste to produce SRF/ Refuse derived fuel (RDF). Treatment operations shall be limited to physical treatment including manual & mechanical sorting, separation, screening, shredding, compaction or blending for the purpose of producing SRF/RDF for recovery. Waste treatment shall take place within an enclosed building with purpose built extraction system and on an impermeable surface with sealed drainage system.
Directly Associated Activities						
North West Recycling Ltd EPR/DP3393LV	N/A	Receipt and processing of general household, commercial and industrial wastes, to produce residual non-recyclable waste for use in SRF production installation. Wastes processed in Unit A, with non-recyclable waste transferred to Unit B for SRF production.	N/A	N/A	N/A	Receipt and storage of non-hazardous waste pending its use in the production of SRF/RDF. All waste storage shall take place within an enclosed building and on an impermeable surface with sealed drainage.
North West Recycling Ltd EPR/DP3393LV	N/A	Bulking of recyclable wastes recovered as an incidental part of the SRF/RDF production process.	N/A	N/A	N/A	Bulking of recyclables and residual waste generated from SRF/RDF production. All bulking activities shall take place within an enclosed building and on an impermeable surface with sealed drainage system.
North West Recycling Ltd EPR/DP3393LV	N/A	Storage of recovered SRF/RDF recyclables and residual wastes pending removal from the site.	N/A	N/A	N/A	Storage of recovered SRF/RDF and recyclables and residual wastes shall take place in an enclosed building and on an impermeable surface with sealed drainage system.
North West Recycling Ltd EPR/DP3393LV	N/A	Storage of raw materials, including lubrication oil and diesel.	N/A	N/A	N/A	From the receipt of raw materials to despatch for use within the facility.
Annual Throughput						
North West Recycling Ltd EPR/DP3393LV	600,000 tonnes (total including installation and existing permitted waste activities)					
Storage Capacity for Installation Activities						
North West Recycling Ltd EPR/DP3393LV	5,163 tonnes					

4 EWC codes

4.1 A full list of existing waste codes with descriptions for incoming waste streams is included in the existing Environmental Permit. The operator proposes to include a single additional waste code within the permit as part of this variation application. This is as follows and will be processed within Unit B:

- 19 02 10 – combustible wastes other than those mentioned in 19 02 08 and 19 02 09

4.2 Reference should be made to document ref: 634-004-M for details of waste codes subject to the proposed installation and waste activities on-site.

5 Environmental Risks and Controls

- 5.1 The application has fully considered environmental risks and proposed appropriate controls.
- 5.2 The site will be operated in accordance with a comprehensive Environmental Management System, ensuring that appropriate procedures and measures will be in place to ensure control of potential emissions to air, land and water.
- 5.3 Extraction systems will be installed on Units A and B, collecting diffuse emissions from mechanical treatment of wastes. Activated carbon and baghouse filtration systems will be installed to abate emissions of dust and Volatile Organic Compounds, prior to discharge of air via elevated flues. Emissions modelling has been undertaken as part of the application which has demonstrated that residual emissions from the flues will not generate significant impacts at surrounding receptor locations.
- 5.4 A quantitative noise assessment has been undertaken as part of the application, demonstrating that potential noise impacts will not be significant.
- 5.5 Management plans with appropriate controls have been submitted for dust, noise and odour. A Fire Prevention Plan has also been submitted with the application, ensuring that risks from fire due to storage of combustible wastes is adequately controlled.
- 5.6 There will be no additional discharges to land or water from the process, compared to the permitted operation.
- 5.7 The proposed installation activity will be compliant with relevant Best Available Techniques.

6 **Documentation**

- 6.1 The table overleaf summarises the documentation provided with application in response to relevant parts of the application forms.

Table 6.1 – Application Form Reference Table

Application Form	Question Ref	Document Ref	Document Description
Part C2	2b & Table 1	634-004-C and 634-004-M	Non-technical Summary (NTS) Permit Application Supporting Document
Part C2	3	634-004-P	WAMITAB Certs
Part C2	3d	634-004-A	Environmental Management System (EMS)
Part C2	5a	634-003-03 and 634-004-03A	Site Specific Drawings
Part C2	5c	634-004-C	NTS
Part C2	5d	Revision 2.04	FPP (Appendix IV of document ref: 634-004-M)
Part C2	5e	Revision 2.04	FPP (Appendix IV of document ref: 634-004-M)
Part C2	5f	634-004-Q	Site Condition Report
Part C2	6	634-004-D	Environmental Risk Assessment
Part C3	1	634-004-C and 634-004-M	Non-technical Summary (NTS) Permit Application Supporting Document
Part C3	Table 1b	634-004-C and 634-004-M	Non-technical Summary (NTS) Permit Application Supporting Document
Part C3	2 – Table 2	634-004-M	Permit Application Supporting Document
Part C3	3 - Table 3	634-004-M	Permit Application Supporting Document
Part C3	3a1	634-004-C & 634-004-J	NTS & BAT
Part C3	3b - Table 4	634-004-N 634-004-I 634-004-H	Noise & Vibration Management Plan (NVMP) Odour Management Plan Dust Management Plan
Part C3	3c – Table 5	634-004-M	Permit Application Supporting Document
Part C3	4a	634-004-M	Permit Application Supporting Document
Part C3	6a – 6e	634-004-M	Permit Application Supporting Document
Part C4	1 & Table 1a	634-004-C	NTS
Part C4	2 & Table 2	634-004-M	Permit Application Supporting Document
Part C4	3a	634-004-M	Permit Application Supporting Document

Application Form	Question Ref	Document Ref	Document Description
Part C4	3b	634-004-N 634-004-I 634-004-H	Noise & Vibration Management Plan (NVMP) Odour Management Plan Dust Management Plan
Part C4	4a	634-004-M	Permit Application Supporting Document
Part F1	6	634-004-C	NTS

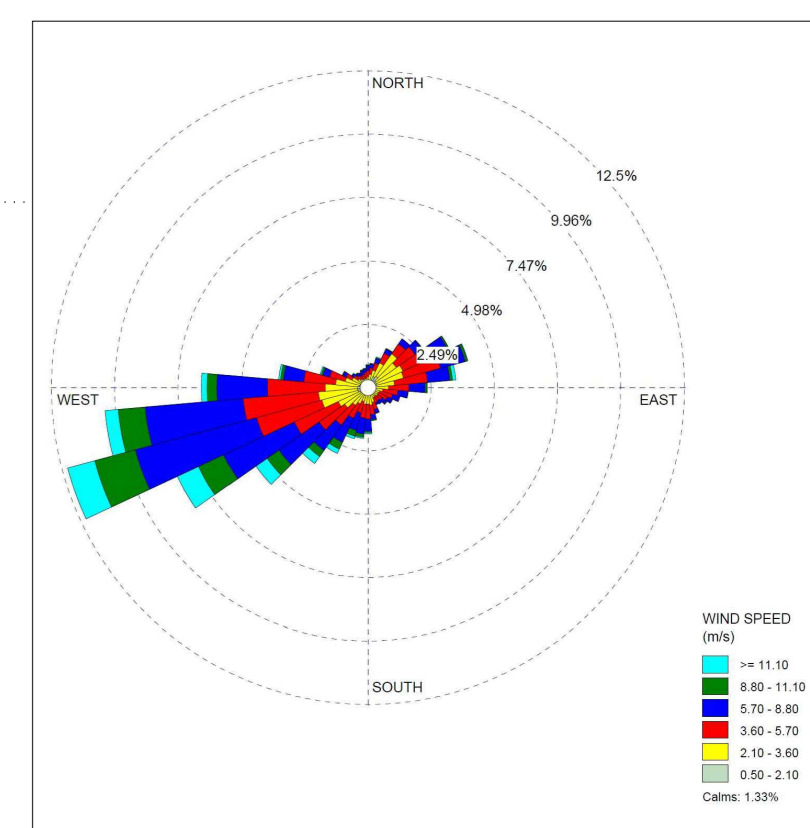
Appendix I

Layout Plans

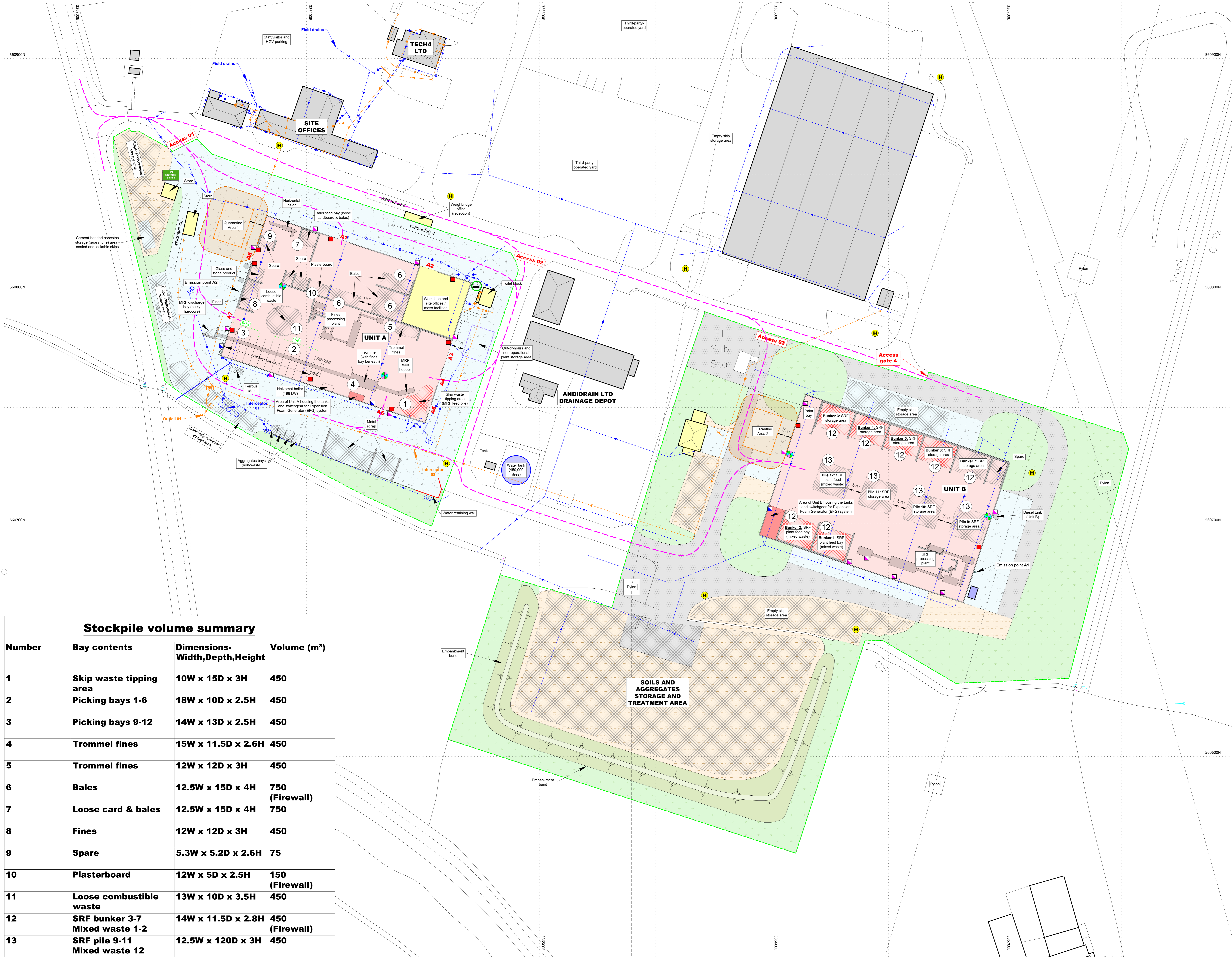
REVISION HISTORY

Rev	Date	Init	Description
-	18.02.22	RS	Initial drawing
A	18.02.22	RS	Client comments
B	14.02.22	RS/CP	EA comments
C	04.01.24	JH	Amendment
D	09.02.24	JH	Flue added
E	18.04.24	JH	Amendment
F	20.09.24	JH	Layout amendment
G	23.09.24	JH	Drainage added
H	26.09.24	JH	Table amendment

- KEY:
- Permit boundary
 - Storage areas (general)
 - Storage areas benefiting from Expansion Foam Generator (EFG) coverage
 - Sealed buildings
 - Concrete area
 - Stone surface (free-draining)
 - Other on-site buildings (offices, workshop, etc.)
 - Tarmac surfacing
 - Unsurfaced areas (grass / vegetation)
 - Quarantine areas (with 6m buffer zones)
 - Fire fighting equipment (extinguishers, etc.)
 - Mains water
 - Access routes for emergency vehicles
 - Fire alarm call points
 - Designated smoking area
 - Penstock / shut-off valve for use in event of a fire or spillage for surface water drainage containment
 - On-site fire hydrants (on 100mm and 200mm mains)
 - Radiometric Thermal Camera & Monitor (RTCM)
 - Indicative surface & roof drainage
 - Indicative combined drainage
 - Drainage fall direction
 - Tanks
 - Sump
 - Silt trap
 - Manhole
 - Gully

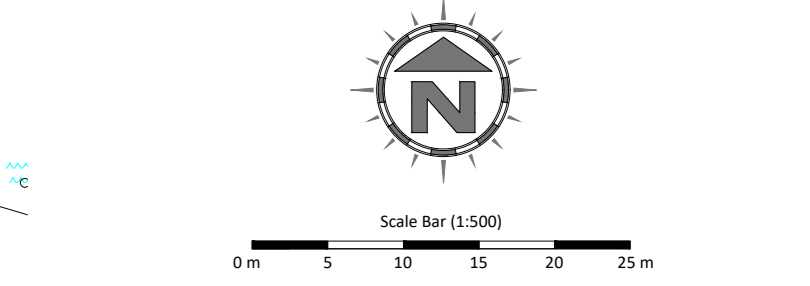


Carlisle Wind Rose

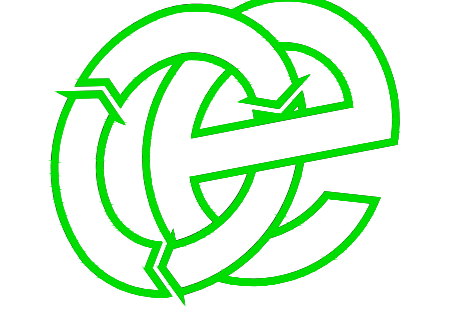


Stockpile volume summary

Number	Bay contents	Dimensions-Width,Depth,Height	Volume (m ³)
1	Skip waste tipping area	10W x 15D x 3H	450
2	Picking bays 1-6	18W x 10D x 2.5H	450
3	Picking bays 9-12	14W x 13D x 2.5H	450
4	Trommel fines	15W x 11.5D x 2.6H	450
5	Trommel fines	12W x 12D x 3H	450
6	Bales	12.5W x 15D x 4H	750 (Firewall)
7	Loose card & bales	12.5W x 15D x 4H	750
8	Fines	12W x 12D x 3H	450
9	Spare	5.3W x 5.2D x 2.6H	75
10	Plasterboard	12W x 5D x 2.5H	150 (Firewall)
11	Loose combustible waste	13W x 10D x 3.5H	450
12	SRF bunker 3-7 Mixed waste 1-2	14W x 11.5D x 2.8H	450 (Firewall)
13	SRF pile 9-11 Mixed waste 12	12.5W x 120D x 3H	450



Oaktree Environmental Ltd
 Waste, Planning and Environmental Consultants



DRAWING TITLE
 LAYOUT & FIRE PLAN (PHASE 1)

CLIENT
 North West Recycling Ltd

PROJECT/SITE
 Rockcliffe Industrial Estate, Rockcliffe, Carlisle CA6 4RW

SCALE 0 A3
 1:500

CLIENT NO
 634

JOB NO
 003

DRAWING NUMBER
 634-003-03

SHEET NUMBER
 1 of 1

REV
 H

STATUS
 Issued

DRAWN BY
 RS/CP/JH

CHECKED
 RS

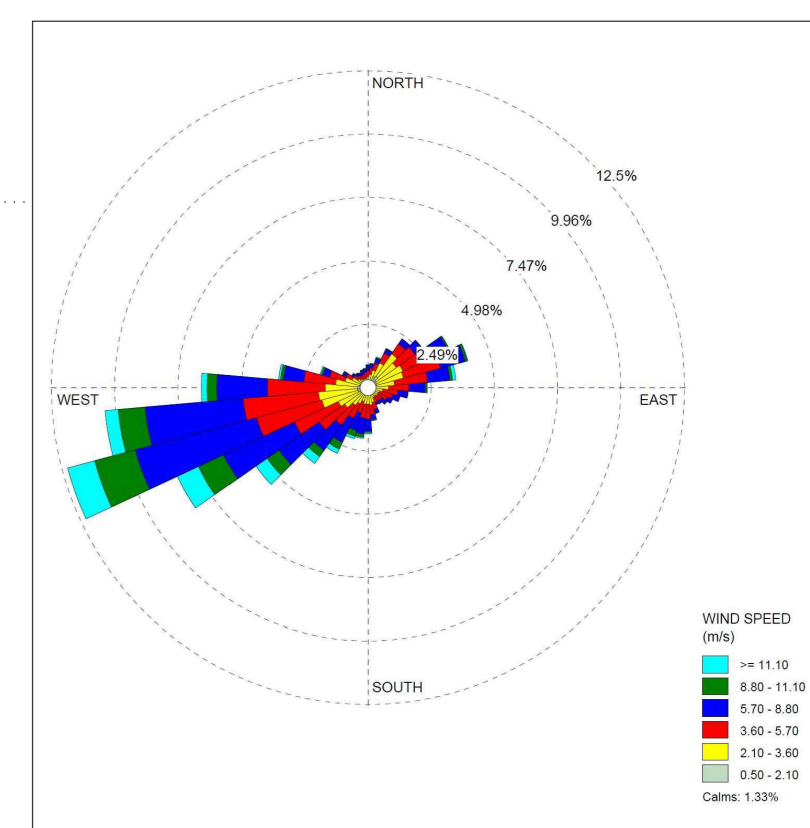
DATE
 26.09.24

Lime House, Road Two, Winford, Cheshire, CW7 3JZ
 t: 01606 558833 | e: sales@oaktree-environmental.co.uk

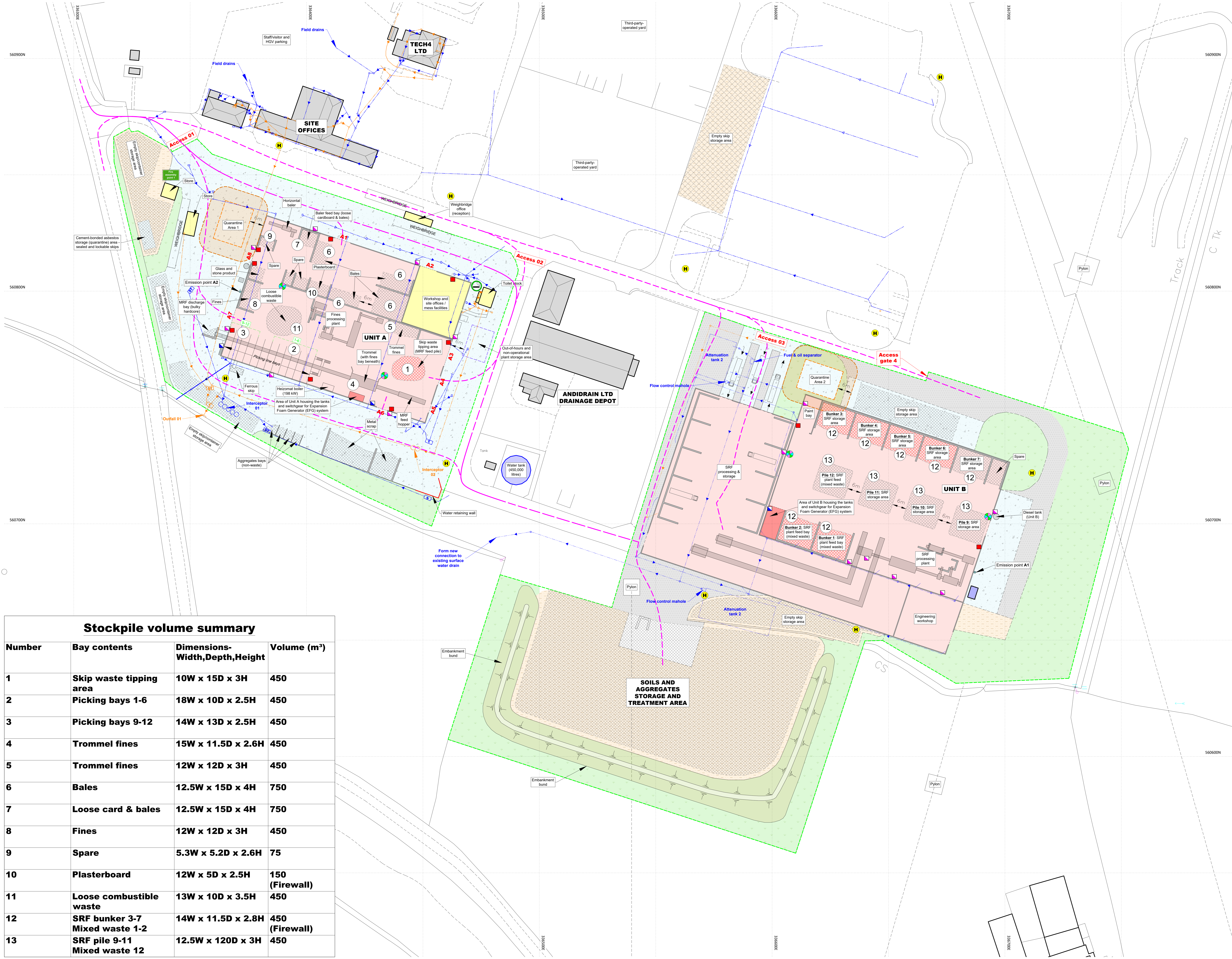
REVISION HISTORY

Rev	Date	Init	Description
-	31.07.24	RS/JH	Initial drawing
A	01.08.24	JH	Amendment
B	20.08.24	JH	Emission point added
C	28.08.24	JH	Table added
D	30.08.24	JH	Amendment
E	23.09.24	JH	Drainage added
F	26.09.24	JH	Table amendment
G	19.12.24	JH	Client comments

- KEY:
- Permit boundary
 - Storage areas (general)
 - Storage areas benefiting from Expansion Foam Generator (EFG) coverage
 - Sealed buildings
 - Concrete area
 - Stone surface (free-draining)
 - Other on-site buildings (offices, workshop, etc.)
 - Tarmac surfacing
 - Unsurfaced areas (grass / vegetation)
 - Quarantine areas (with 6m buffer zones)
 - Fire fighting equipment (extinguishers, etc.)
 - Mains water
 - Access routes for emergency vehicles
 - Fire alarm call points
 - Designated smoking area
 - Penstock / shut-off valve for use in event of a fire or spillage for surface water drainage containment
 - On-site fire hydrants (on 100mm and 200mm mains)
 - Radiometric Thermal Camera & Monitor (RTCM)
 - Indicative surface & roof drainage
 - Indicative combined drainage
 - Drainage fall direction
 - Tanks
 - Sump
 - Silt trap
 - Manhole
 - Gully



Carlisle Wind Rose



Stockpile volume summary

Number	Bay contents	Dimensions-Width,Depth,Height	Volume (m³)
1	Skip waste tipping area	10W x 15D x 3H	450
2	Picking bays 1-6	18W x 10D x 2.5H	450
3	Picking bays 9-12	14W x 13D x 2.5H	450
4	Trommel fines	15W x 11.5D x 2.6H	450
5	Trommel fines	12W x 12D x 3H	450
6	Bales	12.5W x 15D x 4H	750
7	Loose card & bales	12.5W x 15D x 4H	750
8	Fines	12W x 12D x 3H	450
9	Spare	5.3W x 5.2D x 2.6H	75
10	Plasterboard	12W x 5D x 2.5H	150 (Firewall)
11	Loose combustible waste	13W x 10D x 3.5H	450
12	SRF bunker 3-7 Mixed waste 1-2	14W x 11.5D x 2.8H	450 (Firewall)
13	SRF pile 9-11 Mixed waste 12	12.5W x 120D x 3H	450

Oaktree Environmental Ltd
 Waste, Planning and Environmental Consultants

DRAWING TITLE
 LAYOUT & FIRE PLAN (PHASE 2)

CLIENT
 North West Recycling Ltd

PROJECT/SITE
 Rockcliffe Industrial Estate, Rockcliffe, Carlisle CA6 4RW

SCALE 0 A3
 1:500

CLIENT NO
 634

JOB NO
 004

DRAWING NUMBER
 634-004-03A

SHEET NUMBER
 1 of 1

REV
 G

STATUS
 Issued

DRAWN BY
 RS/CP/JH

CHECKED
 RS

DATE
 19.12.24

Lime House, Road Two, Winsford, Cheshire, CW7 3JZ
 t: 01606 558833 | e: sales@oaktree-environmental.co.uk