

CDM Residual Hazards
In addition to the hazards / risks normally associated with the types of work detailed on this drawing, particular attention is drawn to unusual or hidden risks, which are identified by the following:

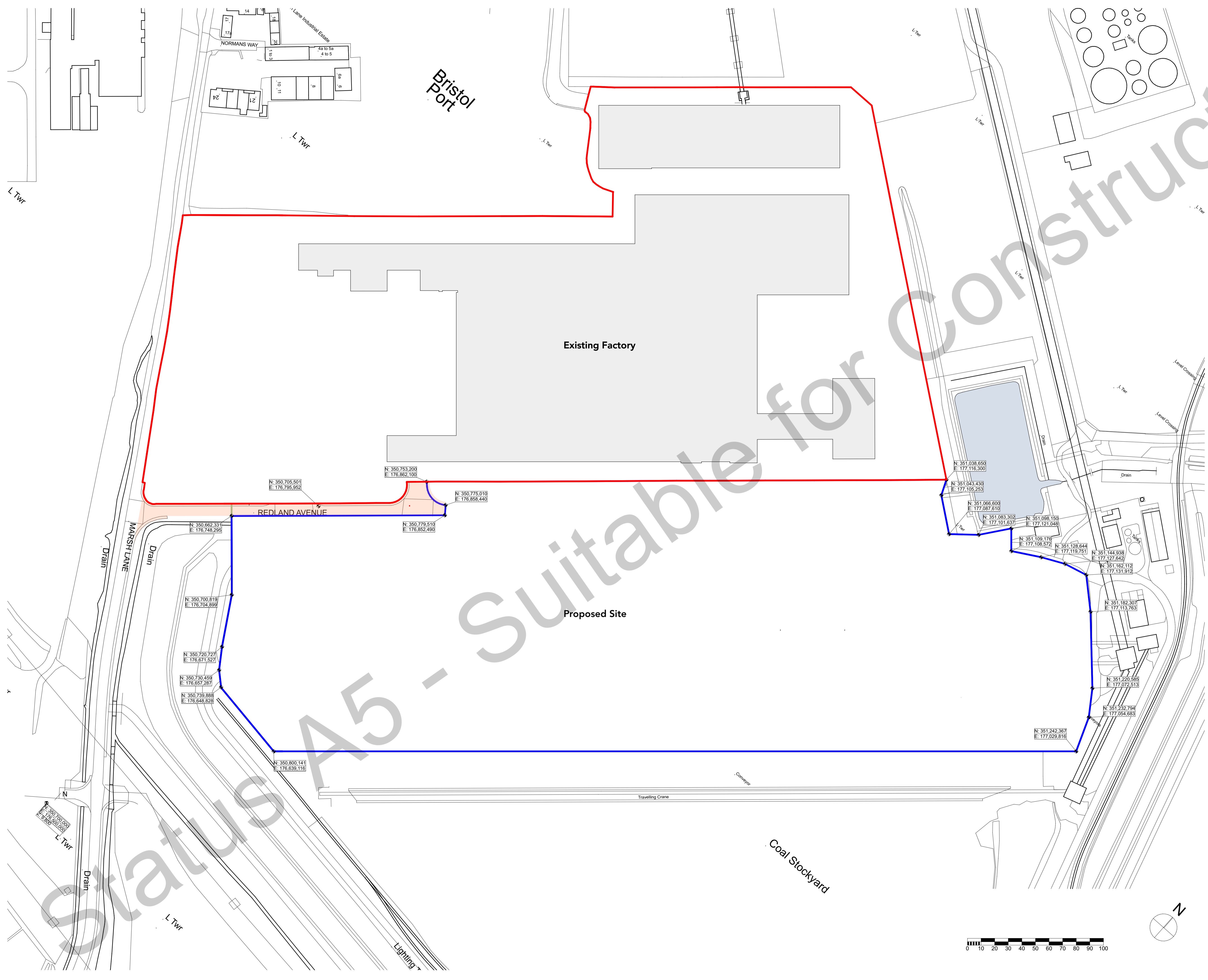
- Significant Hazard Key**
- Used to avoid or refrain from a particular action
 - Used to convey some relevant information
- Refer to designers risk register for further information on highlighted hazards

GENERAL NOTES AND LEGEND

Boundary Key

- existing site boundary
- new lease boundary
- Section of Redland Avenue to be 'stopped up'

NOTE:
Coordinates based on Royal Portbury Docks drawing: "42622G Etex Expansion Lease"



C01	17/03/22	Construction Issue	IMa	AHu
P09	19/03/21	Tender Issue	BSI	IMa
P08	08/03/21	DRAFT Tender		
P07	18/12/20	Stage 3 Final Issue	JD	BSI
P06	01/09/20	Boundary altered to Port Authority request, affected utilities moved, Stage 3 issue - DRAFT		JD
P05	02/07/20	Planning Boundary Updated	JDud	BSI
P04	22/04/20	Corrected scalebar	JD	BSI
P03	06/04/20	Updated boundary and coords	AG	BSI
P02	03/04/20	Updated boundary and coords	AG	BSI
P01	14/02/20	First Issue	AG	BSI
rev	date	description	by	Ckd

Construction

project:
Etex Bristol Expansion Project (BL4)

drawing name:
Site Plan - Boundary Coordinates

drawing ref: BL4-MAB-00-00-DR-A-00203
status / revision: A / C01
scale / format: 1:1250 @ A1

architecture / interiors / landscape
maber.co.uk
Leicester

00203

Do not scale from this drawing - dimensions and levels to be checked on site by the contractor - all dimensions in millimetres unless otherwise noted - all levels in metres unless otherwise noted.
The title, copyright and confidential information in this document belongs to Maber Associates Limited. Copyright 2022. All rights reserved. You may not reproduce this document or disclose it to others without the consent of Maber Associates Limited.