

1. Introduction

This document defines the procedure that all operators must strictly follow when using the bin washer. This procedure also defines the steps required for maintenance and fault finding.

2. Intended Audience

All Plant Operatives.

3. Procedure

Ensure that the main panel is turned on and reset. If the local panel does not work then you should contact the Incineration Manager/Shift Supervisor.

- Push the button to lower the ramp.
- Place the dirty bin onto the ramp with the lid supported.
- Close the ramp.
- Depending on the condition of the bin you have 3 cleaning options:
- Button 1 is for the light wash (for a reasonably clean bin).
- Button 2 is for the medium wash (for the lightly soiled bin).
- Button 3 is for the heavily contaminated bins.
- Once the button is pushed the cleaning cycle will take place automatically.
- After the wash cycle has stopped the ramp can be lowered and the bin removed.

4. Notes:

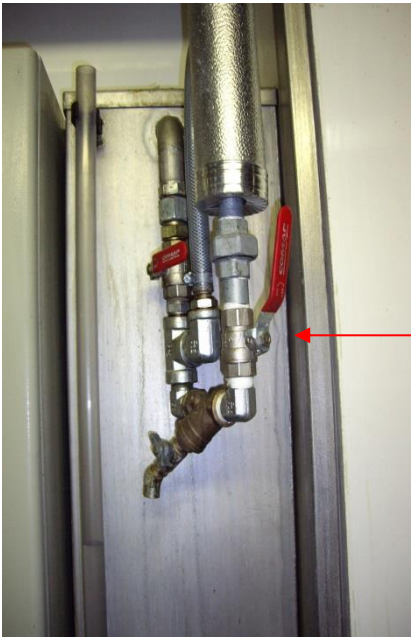
Please ensure that all contaminated wheeled bins that are leaving site are washed.

All Operators must ensure that the daily checks have been carried out before using it.

4.1 Main Pump

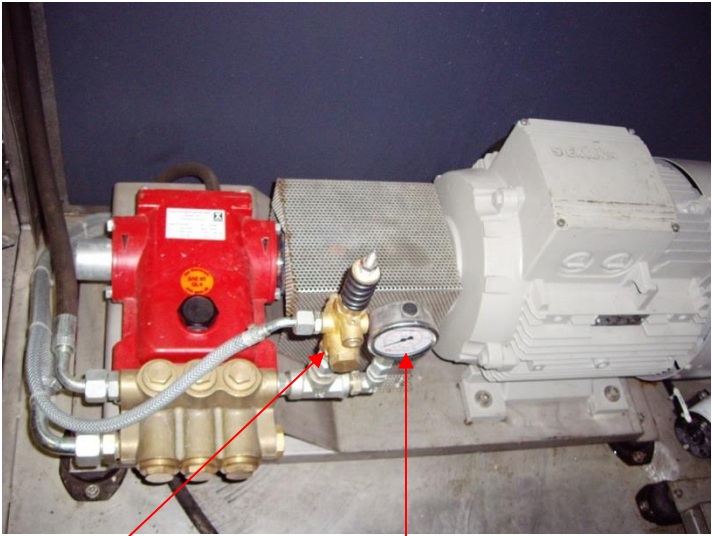
Check that the water feed to the main cold water tank is active.

4.2 Water feed to main tank & disinfectant water feed



Main water feed valve

4.3 HP Pump P31/25-220



Safety Valve

Pressure gauge (Manometer)

4.4 Disinfectant Products

The disinfectant is diluted in the mixing tank provided (80 litres approx.) in the control system. This is a sufficient level to be able to work for a minimum of one full workday.

When the disinfectant level reaches the lowest point, it is necessary to fill the disinfectant hopper (tutti frutti or equivalent) and open valve to drain. Ensure that the main water feed is on, the water feed will then fill the tank until the maximum level is reached on the gauge.

Remember to turn off the disinfectant water feed once the mixed disinfectant tube level reaches the required level.

The mixing of the disinfectant is done automatically, after the end of each cycle. For this to happen it is necessary for the auto disinfectant switch to be turned to the on position. This button is located on the front of the electrical control box (**make sure the switch is on auto**).

4.5 Disinfectant Pump WW56



Button for disinfectant Automatic/Manual



4.6 Pre-Work Testing Procedure

With the loading system in the OPEN position, commence the testing of the High Pressure system:

- Push the button marked POMPE HP and one of the robot arms is under pressure. A second press of the same button allows the other circuit to be tested. Then a third push on the button until the pump stops.
- Check the form of the water jets which exit the nozzles, if one or more of them seem to disperse the water in an abnormal way. Stop the system, unscrew the nozzles for cleaning and retry the test.
- Check the pressure on the main pump pressure gauge, the operating pressure to be maintained at approximately 140 bars.

4.7 Operator Warning

- **Never** operate the HP pump without water.
- **Never** put washing product into the clean water tank.

5. PPE

During the inspection, unloading and handling of waste the following minimum PPE must be worn:

MINIMUM PPE	Operators	Drivers	Contractors	Visitors
High visibility jacket/waistcoat conforming to EN ISO 20471	✓	✓	✓	✓
Safety glasses conforming to EN ISO 166	✓	✓	✓	✓
Work wear supplied by the company	✓	✓	✓	
Gloves conforming to EN ISO 374	✓	✓	✓	*
Safety footwear conforming to EN ISO 20345	✓	✓	✓	✓
Hearing protectors conforming to EN ISO 352	✓**		✓**	*
Hard hats conforming to EN ISO 397	✓	✓	✓	✓

* Supplied with upon request; ** At Mandatory Hearing Protection areas.

Everyone who **works** in the Incinerator Plant must, **at all times**, wear any **ADDITIONAL PPE** specified by the relevant SOP.

6. Associated Documents

- SO-COL-CL-001 Training Pre-requisites.
- SO-COL-CL-002 PPE Pre-requisites.
- SHEQ System.
- Bin Washer Manual.