

SITE ID13013

NGR353391 179395

NOTES

1.

ANY MAPS ON THIS DRAWING ARE REPRODUCED FROM THE ORDNANCE SURVEY MAP WITH THE PERMISSION OF HIS MAJESTY'S STATIONERY OFFICE © CROWN COPYRIGHT RESERVED. LICENCE No. 100019539.

2.

UNLESS NOTED OTHERWISE, ALL DIMENSIONS ARE IN MILLIMETRES AND ALL LEVELS ARE IN METRES AOD.

KEY

AVONMOUTH WRC

NEW INSTALLATION BOUNDARY

EXCLUDED ASSET NOT DIRECTLY RELATED TO THE STU OR DAA ACTIVITIES

C02	TITLE BLOCK UPDATED	DHI	CD	CD	26/11/2025
C01	FIRST ISSUE	DHI	CF	CF	13/10/2025
MK	REVISIONS	DRN	CHK	APP	DATE

AVONMOUTH WRC

AMP 8

AVONMOUTH BC  
INSTALLATION BOUNDARY

APPROVED FOR ISSUE

ORIGINAL DRAWING SIZE A1

INITIALS	DATE	SCALES	REV.
DESIGNED: RL	17/01/2025	1:1000	C02
DRAWN BY: DHI	17/01/2025		

DRAWING NUMBER  
D14219-WWSL-XX-XX-D-C-9070

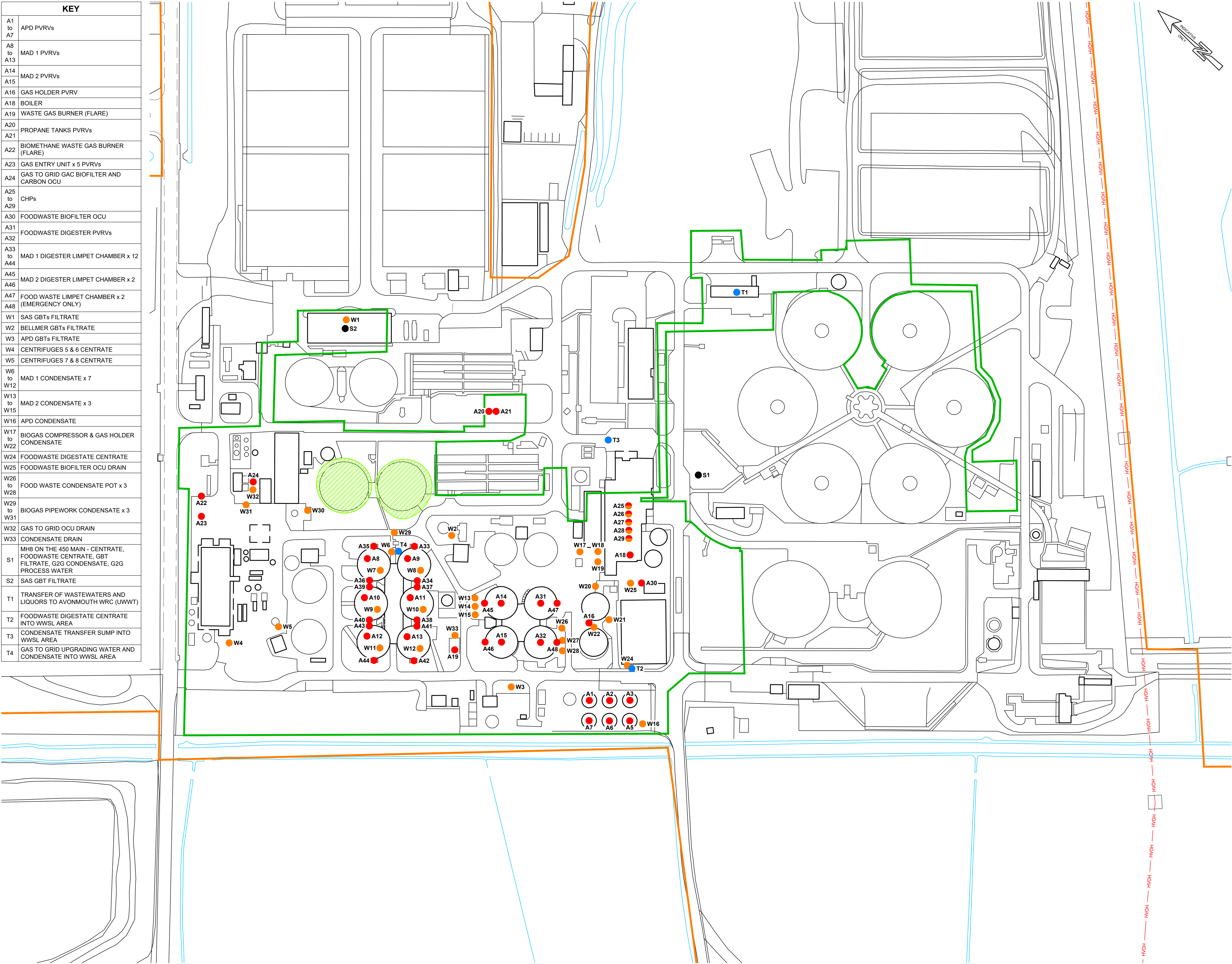
Wessex Water

YTL GROUP

YTL



KEY	
A1 to A7	APD PVRVs
A8 to A13	MAD 1 PVRVs
A14 to A15	MAD 2 PVRVs
A16	GAS HOLDER PVRV
A18	BOILER
A19	WASTE GAS BURNER (FLARE)
A20	PROPANE TANKS PVRVs
A21	
A22	BIOMETHANE WASTE GAS BURNER (FLARE)
A23	GAS ENTRY UNIT x 5 PVRVs
A24	GAS TO GRID GAC BIOFILTER AND CARBON OCU
A25 to A29	CHPs
A30	FOODWASTE BIOFILTER OCU
A31	FOODWASTE DIGESTER PVRVs
A32	
A33 to A44	MAD 1 DIGESTER LIMPET CHAMBER x 12
A45	
A46	MAD 2 DIGESTER LIMPET CHAMBER x 2
A47	FOOD WASTE LIMPET CHAMBER x 2 (EMERGENCY ONLY)
A48	
W1	SAS GBTs FILTRATE
W2	BELLMER GBTs FILTRATE
W3	APD GBTs FILTRATE
W4	CENTRIFUGES 5 & 6 CENTRATE
W5	CENTRIFUGES 7 & 8 CENTRATE
W6 to W12	MAD 1 CONDENSATE x 7
W13 to W15	MAD 2 CONDENSATE x 3
W16	APD CONDENSATE
W17 to W22	BIOGAS COMPRESSOR & GAS HOLDER CONDENSATE
W24	FOODWASTE DIGESTATE CENTRATE
W25	FOODWASTE BIOFILTER OCU DRAIN
W26 to W28	FOOD WASTE CONDENSATE POT x 3
W29 to W31	BIOGAS PIPEWORK CONDENSATE x 3
W32	GAS TO GRID OCU DRAIN
W33	CONDENSATE DRAIN
S1	MH8 ON THE 450 MAIN - CENTRATE, FOODWASTE CENTRATE, GBT FILTRATE, G2G CONDENSATE, G2G PROCESS WATER
S2	SAS GBT FILTRATE
T1	TRANSFER OF WASTEWATERS AND LIQUORS TO AVONMOUTH WRC (UWWT)
T2	FOODWASTE DIGESTATE CENTRATE INTO WWSL AREA
T3	CONDENSATE TRANSFER SUMP INTO WWSL AREA
T4	GAS TO GRID UPGRADING WATER AND CONDENSATE INTO WWSL AREA



SITE ID13013

NGR353391 179395

NOTES

1. ANY MAPS ON THIS DRAWING ARE REPRODUCED FROM THE ORDNANCE SURVEY MAP WITH THE PERMISSION OF HIS MAJESTY'S STATIONERY OFFICE © CROWN COPYRIGHT RESERVED. LICENCE No. 100019539.

2. UNLESS NOTED OTHERWISE, ALL DIMENSIONS ARE IN MILLIMETRES AND ALL LEVELS ARE IN METRES AOD.

KEY

AVONMOUTH WRC

NEW INSTALLATION BOUNDARY

EXCLUDED ASSET NOT DIRECTLY RELATED TO THE STU OR DAA ACTIVITIES

C02	LIMPET BOXES ADDED	DHI	CD	CD	26/11/2025
C01	FIRST ISSUE	DHI	CF	CF	13/10/2025
MK	REVISIONS	DRN	CHK	APP	DATE

AVONMOUTH WRC

AMP 8

EMISSION, SAMPLING, AND TRANSFER PLAN

APPROVED FOR ISSUE

ORIGINAL DRAWING SIZE A1

INITIALS

DATE

DESIGNED: RL17/01/2025

DRAWN BY: DHI17/01/2025

SCALES

1:1000

REV.

C02

DRAWING NUMBER  
D14219-WWSL-XX-XX-D-C-9071

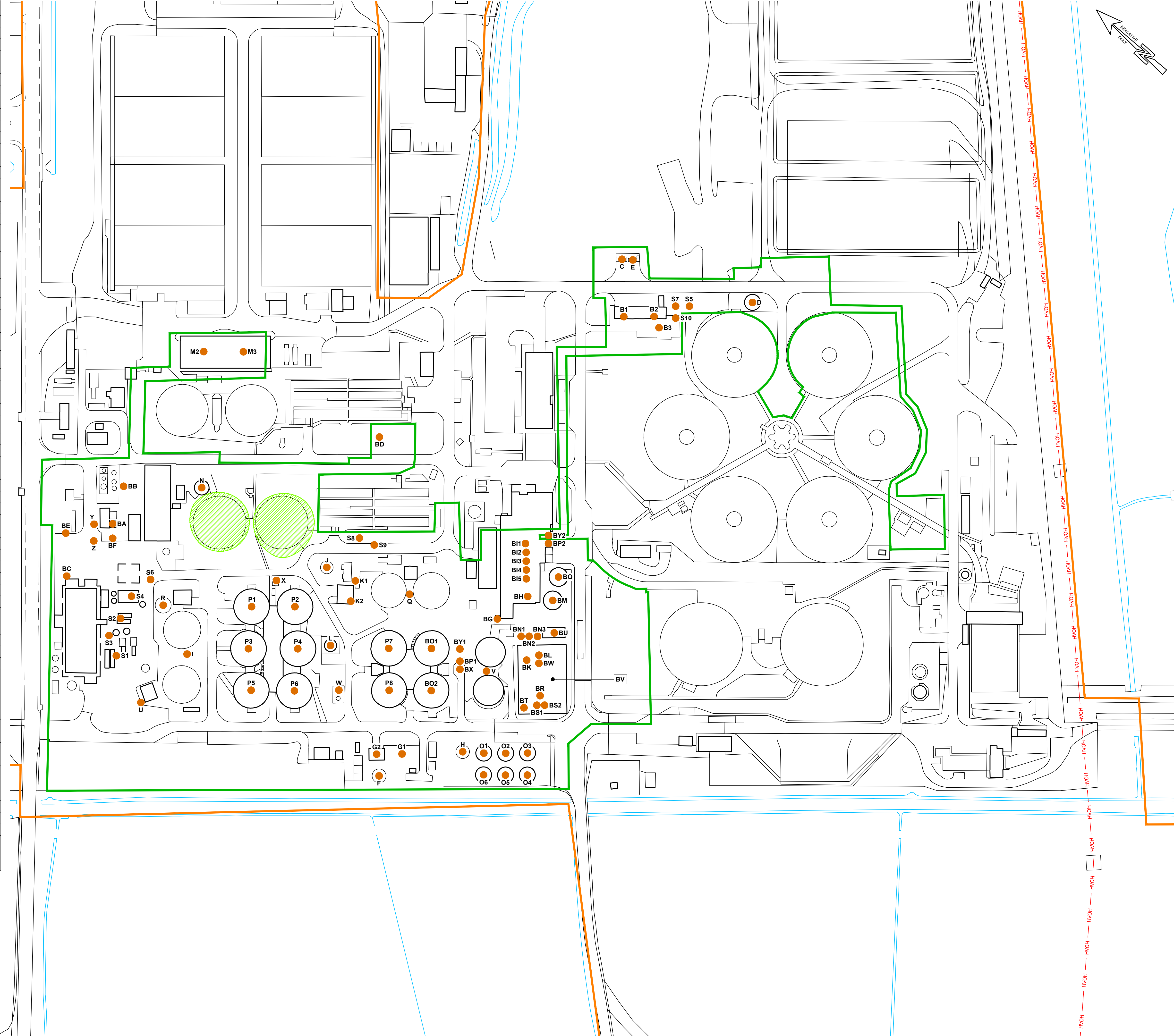
Wessex Water

YTL GROUP

YTL



KEY	
B1	STRAIN PRESS FEED SUMP
B2	LIQUOR SUMP
B3	STRAINED SLUDGE SUMP
C	PRIMARY SLUDGE STRAIN PRESSES
D	IMPORT SLUDGE RECEPTION TANK
E	IMPORTED STRAIN PRESSES
F	APD GBTs 1, 2 & 3 FEED TANK
G1	APD GBTs
G2	APD POLY MAKEUP PLANT
H	APD FEED TANK
I	AVONMOUTH CONSOLIDATION TANKS
J	BELLMER FEED TANK
K1	BELLMER GBTs
K2	BELLMER POLYMER SYSTEM
L	THICKENED BELLMER TANK
M2	SBR SAS GBTs
M3	SAS GBT POLY MAKEUP SYSTEM
N	THICKENED SAS TRANSFER TANK
O1 to O6	APD (ACID PHASE DIGESTION)
P1 to P8	MESOPHILIC ANAEROBIC DIGESTERS (MAD)
Q	SECONDARY SLUDGE STORAGE TANKS (SSST)
R	CENTRIFUGE FEED SLUDGE TANK
S1	CENTRIFUGES 5 & 6
S2	CENTRIFUGES 7 & 8
S3	POLYMER PLANT FOR CENTRIFUGES 5 & 6
S4	POLYMER PLANT FOR CENTRIFUGES 7 & 8
S5	RAW SLUDGE TRAILERS
S6	DIGESTED SLUDGE TRAILERS
S7	FLOTTWEG CENTRIFUGES
S8	ROAD CENTRIFUGES x 3
S9	POLYMER PLANT FOR THE ROAD CENTRIFUGES
S10	FLOTTWEG CENTRIFUGE POLY PLANT
U	CENTRATE PUMPING STATION
V	GAS HOLDERS x 2
W	WASTE GAS BURNER (FLARE STACK)
X	G2G PRE-TREATMENT PLANT CHILLER
Y	ABSORPTION COLUMN
Z	FLASH COLUMN
BA	DESORPTION COLUMN
BB	CARBON FILTERS
BC	GRID ENTRY UNIT
BD	PROPANE TANK
BE	BIOMETHANE WASTE GAS BURNER
BF	BIOFILTER AND GAC OCU
BG	DEHUMIDIFIER CHILLER
BH	NATURAL GAS BOILER
BI1 to BI5	COMBINED HEAT AND POWER ENGINES (CHPs)
BK	TURBO-DISSOLVER TANKS
BL	HAMMERMILL
BM	HYDROLYSIS BUFFER TANK
BN1 to BN3	PASTEURISATION VESSELS
BO1 BO2	MESOPHILIC ANAEROBIC DIGESTERS 1 & 3
BP1	STRAIN PRESSERS
BP2	POST DIGESTION STORAGE TANK
BR	CENTRIFUGES 1 & 2
BS1	DIGESTATE (CAKE) SKIPS
BS2	
BT	CENTRATE RETURN
BU	ODOUR CONTROL UNIT
BV	FOOD WASTE RECEPTION HALL
BW	PLASTICS AND PACKAGING SKIP
BX	SCREENINGS SKIP
BY1	STRAIN PRESS BUFFER TANKS
BY2	



SITE ID13013

NGR353391 179395

NOTES

1.

ANY MAPS ON THIS DRAWING ARE REPRODUCED FROM THE ORDNANCE SURVEY MAP WITH THE PERMISSION OF HIS MAJESTY'S STATIONERY OFFICE © CROWN COPYRIGHT RESERVED. LICENCE No. 100019539.

2.

UNLESS NOTED OTHERWISE, ALL DIMENSIONS ARE IN MILLIMETRES AND ALL LEVELS ARE IN METRES AOD.

KEY

AVONMOUTH WRC

NEW INSTALLATION BOUNDARY

EXCLUDED ASSET NOT DIRECTLY RELATED TO THE STU OR DAA ACTIVITIES

C02	UPDATE TO ASSETS	DHI	CD	CD	26/11/2025
C01	FIRST ISSUE	DHI	CF	CF	13/10/2025
MK	REVISIONS	DRN	CHK	APP	DATE

AVONMOUTH WRC

AMP 8

AVONMOUTH BC ASSET PLAN

APPROVED FOR ISSUE

ORIGINAL DRAWING SIZE A1

INITIALS	DATE	SCALES	REV.
DESIGNED: RL	17/01/2025	1:1000	C02
DRAWN BY: DHI	17/01/2025		

DRAWING NUMBER

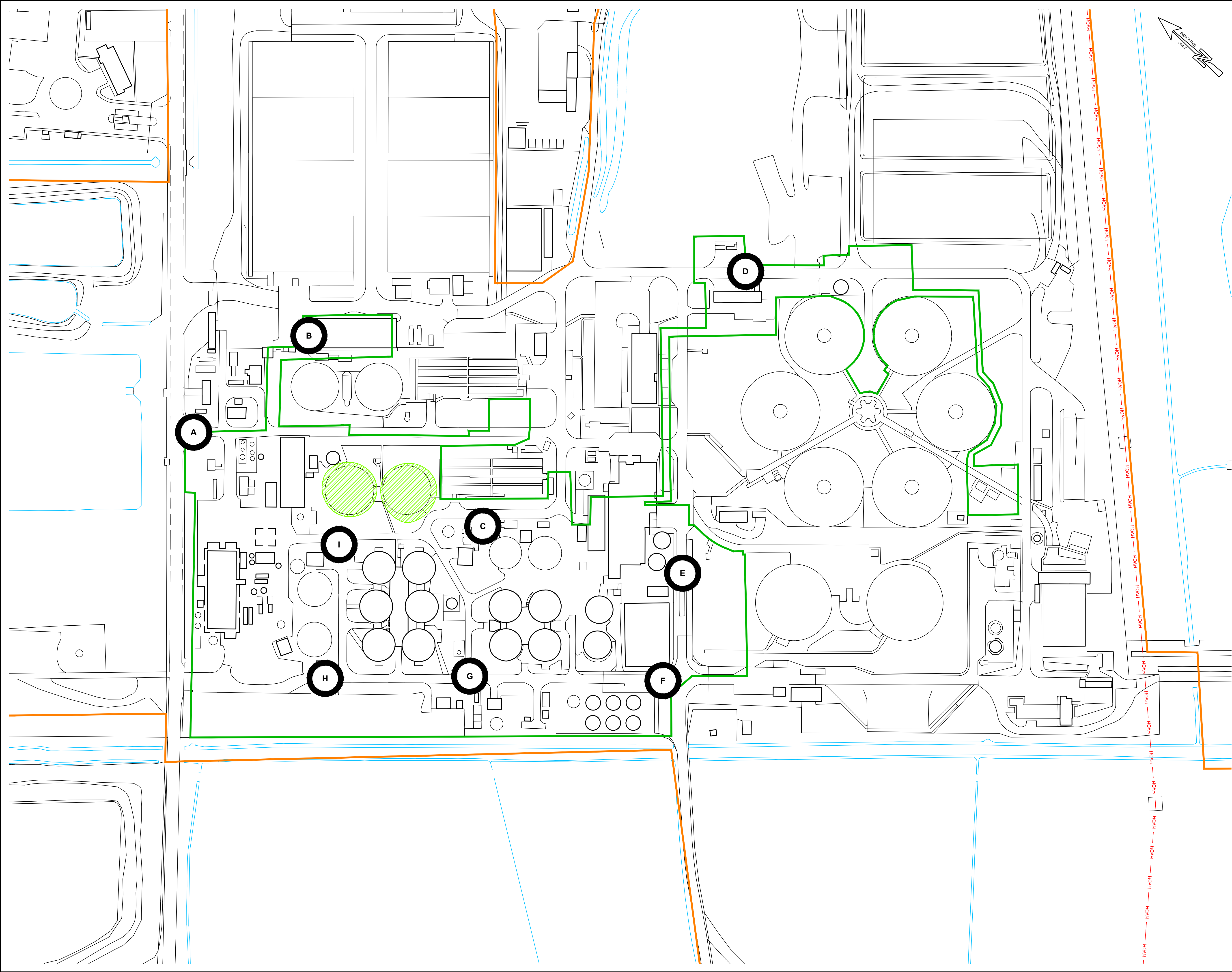
D14219-WWSL-XX-XX-D-C-9072

Wessex Water

YTL GROUP

YTL





SITE ID13013

NGR353391 179395

NOTES

1. ANY MAPS ON THIS DRAWING ARE REPRODUCED FROM THE ORDNANCE SURVEY MAP WITH THE PERMISSION OF HIS MAJESTY'S STATIONERY OFFICE © CROWN COPYRIGHT RESERVED. LICENCE No. 100019539.

2. UNLESS NOTED OTHERWISE, ALL DIMENSIONS ARE IN MILLIMETRES AND ALL LEVELS ARE IN METRES AOD.

KEY

AVONMOUTH WRC

NEW INSTALLATION BOUNDARY

EXCLUDED ASSET NOT DIRECTLY RELATED TO THE STU OR DAA ACTIVITIES

C02	TITLE BLOCK UPDATED	DHI	CD	CD	26/11/2025
C01	FIRST ISSUE	DHI	CF	CF	13/10/2025
MK	REVISIONS	DRN	CHK	APP	DATE

AVONMOUTH WRC

AMP 8

SNIFF TEST LOCATIONS

APPROVED FOR ISSUE

ORIGINAL DRAWING SIZE A1

INITIALS	DATE	SCALES	REV.
DESIGNED: RL	17/01/2025	1:1000	C02
DRAWN BY: DHI	17/01/2025		

DRAWING NUMBER

D14219-WWSL-XX-XX-D-C-9073

Wessex Water

YTL GROUP

YTL