

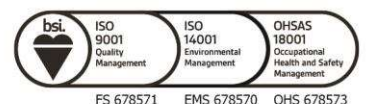
<b>Environmental Permitting (England and Wales) Regulations 2016</b>	
<b>Variation to Standard Rules Permit</b>	
<b>Permit Reference</b>	<b>EPR/EP3490SD</b>
<b>Date of Issue</b>	<b>Feb 2023</b>
<b>Version Number:</b>	<b>2</b>
<b>Report Reference</b>	<b>SRCL_LIT_EP3490SD_Variation_App_Feb_2023</b>

---

SRCL Ltd is a Stericycle company.

Indigo House • Sussex Avenue • Leeds • LS10 2LF  
T: 0333 240 4400 • [stericycle.co.uk](http://stericycle.co.uk)

SRCL Ltd. Registered in England and Wales No. 3226910  
Registered office: Indigo House, Sussex Avenue, Leeds, LS10 2LF



FS 678571 EMS 678570 OHS 678573

## 1. Introduction

This permit variation is being made to transfer the permit from a standard rules permit (SR2008 No 24) to a waste operation.

In this variation we are looking to

- increase the permitted hazardous waste storage
- include extra waste codes in the waste types that are permitted for repackaging into a bulk container
- inclusion of the activity for the light compaction of offensive waste

The revision of the standard rules permit defines repackaging as:

- “(i) taking a waste package for example a bag, drum or box out of one cart or bulk container (for example, skip) and placing it into another cart or bulk container
- (ii) taking a waste package from a cart or bulk container and placing it onto a pallet or vehicle
- (iii) taking a waste package from a pallet and placing it into a cart or bulk container”

## 2. Non-Technical Summary

The site comprises of a healthcare waste transfer station. The site will receive packaged healthcare and related wastes that are suitable for repackaging and or transfer off-site to other disposal or recovery facilities.

The transfer station consists of the following activities:

- Waste operation - the storage of hazardous wastes pending transfer off-site for disposal or recovery
- Waste operation - the storage of non-hazardous wastes pending transfer off-site for disposal or recovery
- Waste operation – repackaging of offensive waste (light compaction) pending transfer off site for disposal or recovery
- Waste operation – repackaging of hazardous and non-hazardous wastes pending transfer off site for disposal or recovery

The following are associated activities to the transfer station:

- Bin washing system for re-usable waste containers

The main features of the facility are as follows:

---

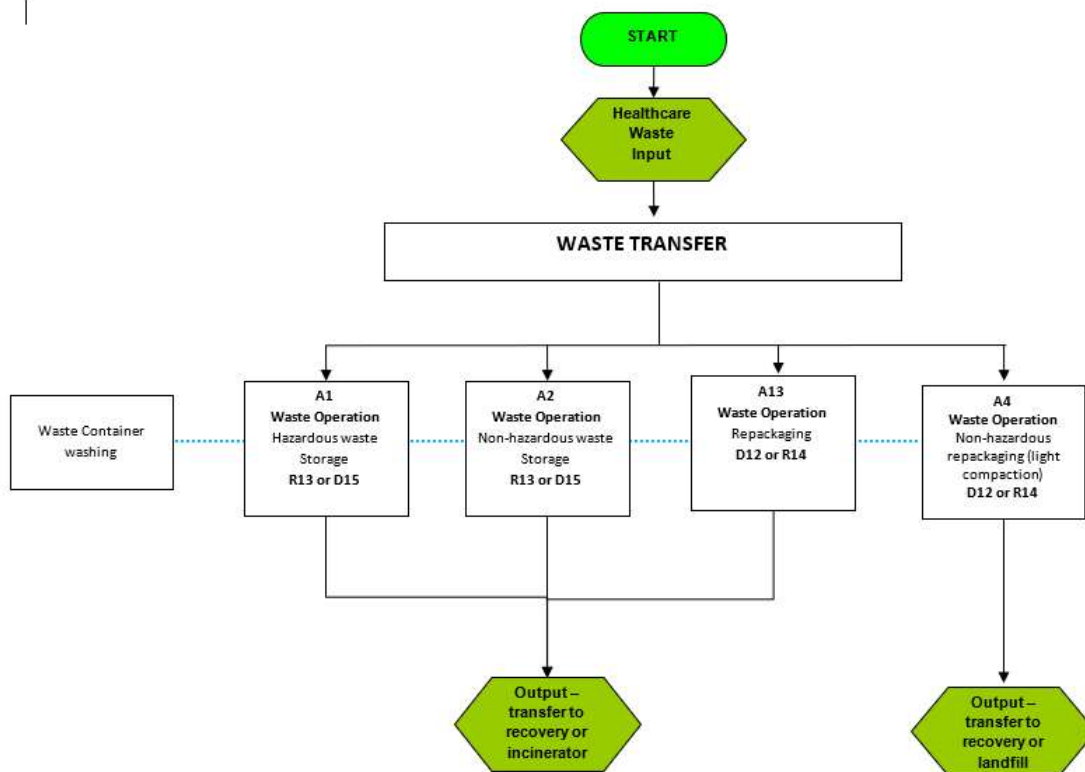
SRCL Ltd is a Stericycle company.

There is an emission point to foul sewer for effluent arising from the container washing process. There are no emissions to air, ground or surface water arising from the activities at the site.

Waste is stored in designated storage areas inside the building. All designated storage areas have impermeable surfaces with sealed drainage and all waste is stored in fully enclosed, leakproof containers.

The site is operated in accordance with the company's Business Management System (BMS), which is certified to ISO 14001 and 9001. The management system includes policies, procedures and work instructions designed to ensure compliance with all permit conditions.

### 2.1. Activity Flowchart



An odour management plan has not been submitted with this application as, the appropriate measures guidance (point 19) requires an odour management plan where odour pollution is

SRCL Ltd is a Stericycle company.

expected a sensitive receptor(s). The facility has been in operation for over 13 years (since permit first issued 22/12/2009), for which no correspondence either to us or through the regulator has been received regard the operations, which would include odour. You will note that section 8.10 of our application provides detail on our odour management techniques employed at the facility to maintain this position. The addition of extra tonnage does not increase the risk of odour, the waste will still be storage/disposed of in accordance with the storage timeframes detailed in the appropriate measures guidance for healthcare waste. In addition to this our management system includes daily inspections of the storage areas which include amenity, which would prioritise the removal of waste. These measures are all detailed in section 8.10 of our application document. As such we do not believe that there is a requirement for the submission of an odour management plan.

## 2.2. Waste Operation Activities

Waste operation activities			
operation name	Description of the activity	Activity capacity	Annex IIA or IIB codes
A1 Transfer station – hazardous	Storage of hazardous waste prior to transfer	Max throughput 4,665 tonnes/year Max storage 15 tonnes	R13; D15
A2 Transfer station – Non-hazardous	Storage of non-hazardous waste prior to transfer	Max throughput 6,220 tonnes/year Max storage 20 tonnes	R13; D15
A3 Transfer station – haz/non-hazardous	Repackaging of clinical waste	Throughput <35 tonnes/day Included in the storage capacity for A1 & A2	R12; D14
A4 Transfer station – non-hazardous	Repackaging of offensive waste – light compaction	Throughput <20 tonnes/day Included in the storage capacity for A2	R12; D14

SRCL Ltd is a Stericycle company.