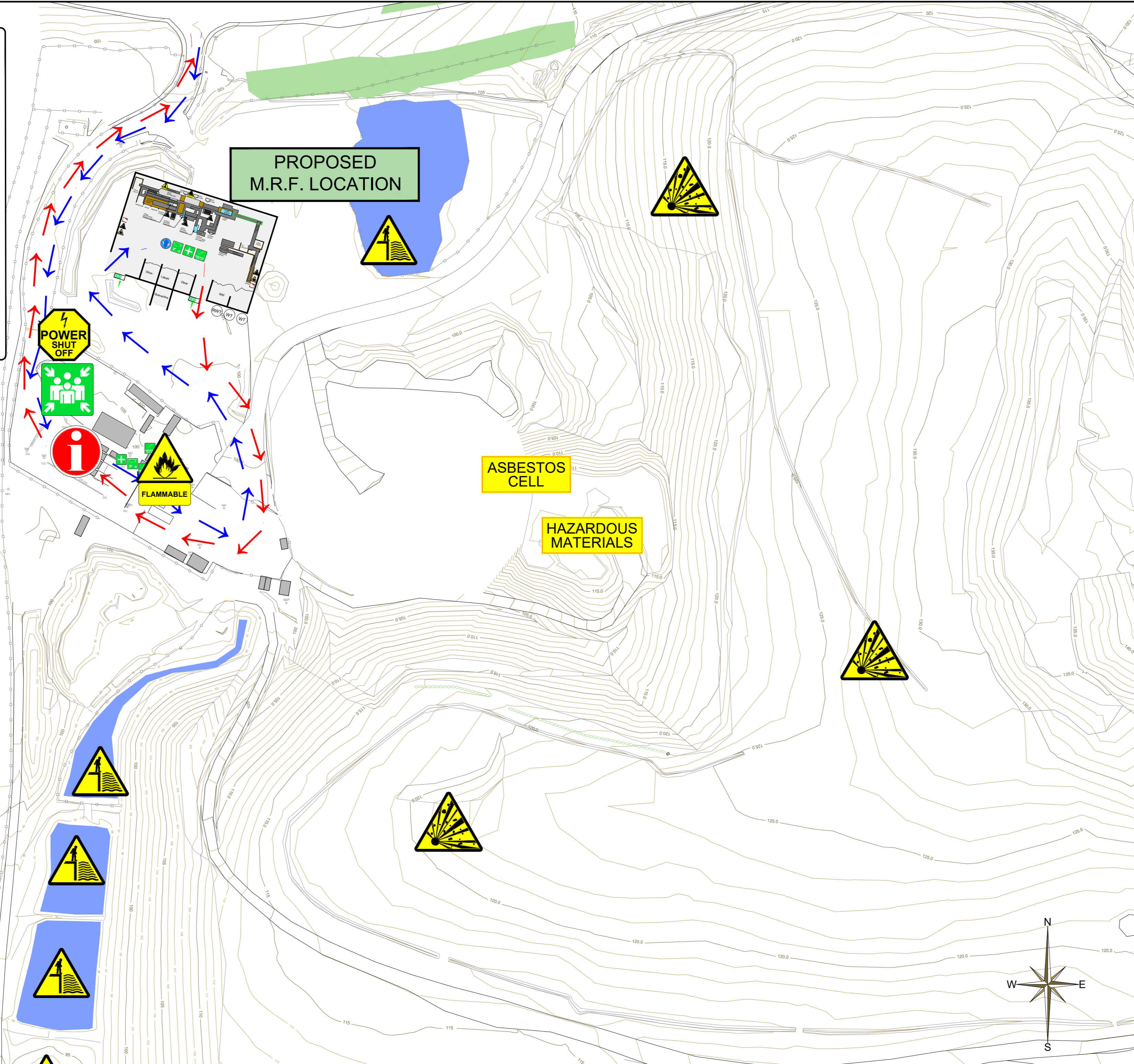


Site Safety

- No Smoking**
- Eye Protection must be worn
- Protective Gloves must be worn
- High visibility jackets must be worn beyond this point
- Hard hats must be worn on this site at all times
- Ear Defenders must be worn
- Protective footwear must be worn



EMERGENCY ISOLATION POINTS

KEY PERSONNEL

FIRST AIDERS:

FIRE WARDENS:

EMERGENCY TEL:

INCIDENT HOTLINE: xxxxxx xxxxxxxx

ASSOCIATED DRAWINGS

SITE NAME
PILSWORTH SOUTH MRF (PROPOSED)

DRAWING TITLE
SITE SAFETY & INDUCTION LAYOUT SHEET 1 OF 2

DRAWING NUMBER
PWS-MRF2000

TASK NUMBER: 21407

SCALE: 1:1250 @ A2	REVISION
OIDRN: R.L. Meaden	R/DRN
OIDATE: 08.06.2023	R/DATE
O/APP: L. Edmonds	R/APP
O/DATE: 08.06.2023	R/DATE

INFORMATION TAKEN FROM
SURVEY SERVICES MASTER FILE: PWS101s-Apr2022 Rev E

OTHER DRAWINGS: PWS101s - Proposed MRF Location - CP1 Prelim

NO UNAUTHORISED REPRODUCTION OR DISTRIBUTION

