

© Crown copyright OS licence 100048957










MVV Environment Limited
 Canford EfW CHP Facility
 Environmental Statement
 Figure 2.1

Proposed Development Components

Feb 2023

Key:

-  Red Line Boundary
-  EFW CHP Facility Site
-  CHP Connection
-  DNC Connection
-  TCC1
-  TCC 2
-  Access road

PROPOSED SITE PLAN
SCALE 1 : 500 @ A1

KEY

- ▬ PLANNING RED LINE BOUNDARY
- ▬ PROPOSED 2.4m HIGH PALADIN TYPE PERIMETER FENCE
- ▬ CANFORD HEATH NATURE RESERVE BOUNDARY
- EXISTING TREES
- PROPOSED TREES & SHRUBS

LEVELS

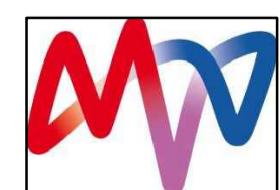
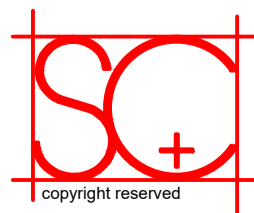
- XX.XXXm EXISTING LEVELS - AOD
- XX.XXXm PROPOSED LEVELS - AOD

SCALE








LEGEND

- ID01: Gatehouse / weighbridges
- ID02: Tipping hall
- ID03: Waste bunker building
 - (ID03a): Tipping bunker
 - (ID03b): Main waste bunker
 - (ID03c): Waste chute platform
 - (ID03d): Crane maintenance area
 - (ID03e): IBA Bunker
 - (ID03f): IBA loading enclosure
 - (ID03g): Back loading hatch
- ID04: Boiler house
- ID05: Air pollution control building
 - (ID05a): APC plant and reactor
 - (ID05b): Bag filter house
 - (ID05c): Induced draft (ID) fan
 - (ID05d): Compressed air station
 - (ID05e): Water treatment plant
 - (ID05f): Urea tank
- ID06: APCr silos
- ID07: Lime & activated carbon silos
- ID08: Chimney & CEMS platform
- ID09: Turbine hall
- ID10: Air cooled condenser (ACC)
- ID11: Water re-cooling system
- ID12: Future district heating equipment area
- ID13: Main transformer & switchgear
- ID14: Emergency diesel generator
- ID15: Diesel tanks
- ID16: Fire water tank & pump enclosure
 - (ID16a): Fire water tanks
 - (ID16b): Fire pump enclosure
- ID17: Switchgear building, administration building and control room
- ID18: Workshop & stores
- ID19: Lay-by area
- ID20: Parking areas
- ID21: HGV out of hours parking area
- ID22: Mobile crane slab
- ID23: Laydown / maintenance & future environmental requirements area



KEY

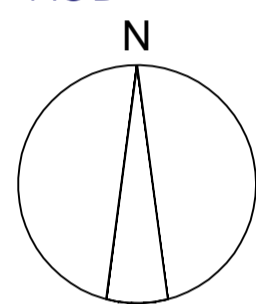
-  PLANNING RED LINE BOUNDARY
-  PROPOSED 2.4m HIGH PALADIN TYPE PERIMETER FENCE
-  CANFORD HEATH NATURE RESERVE BOUNDARY
-  EXISTING TREES
-  PROPOSED TREES & SHRUBS

LEVELS

-  XXX.XXXm EXISTING LEVELS - AOD
-  XX.XXXm PROPOSED LEVELS - AOD

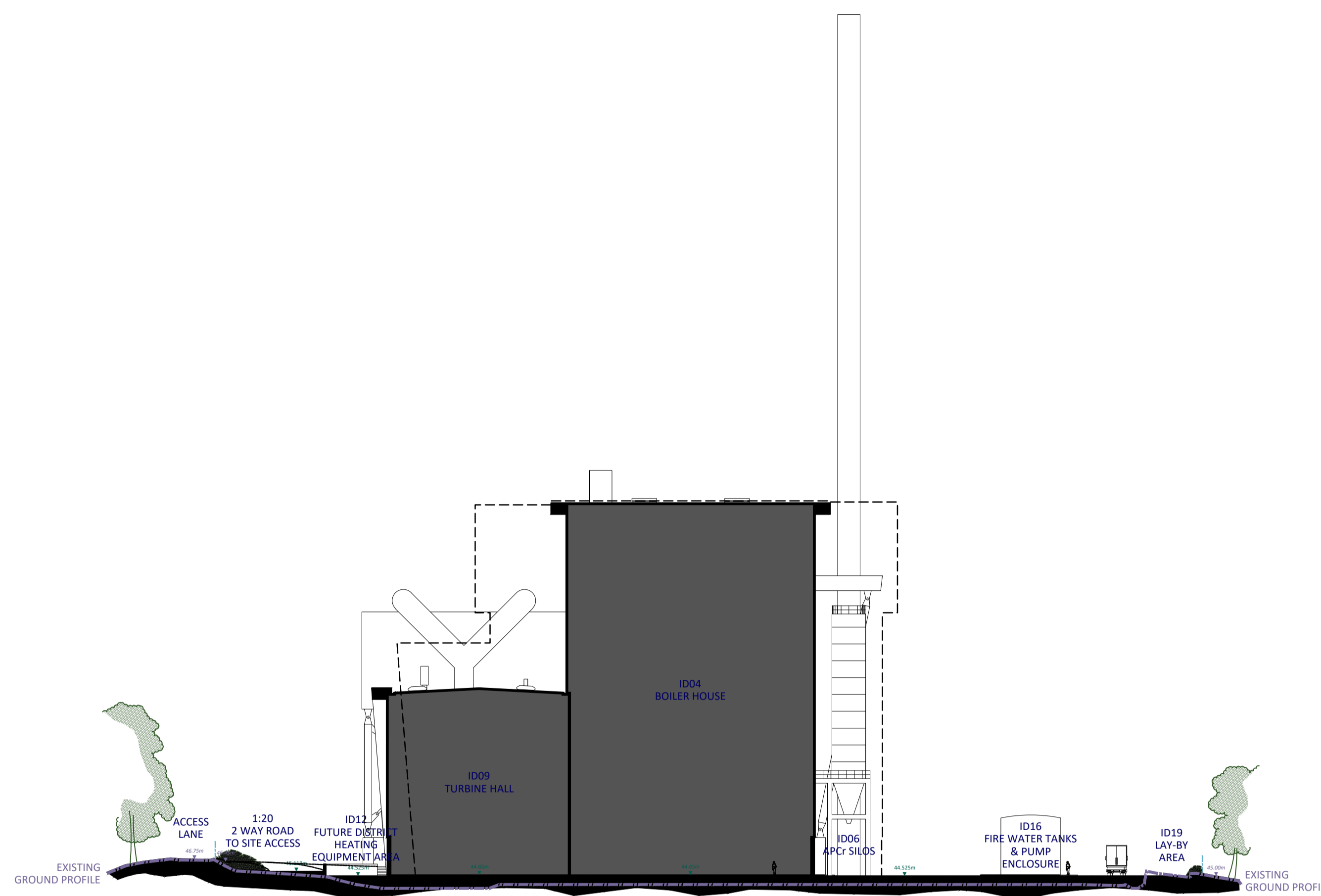
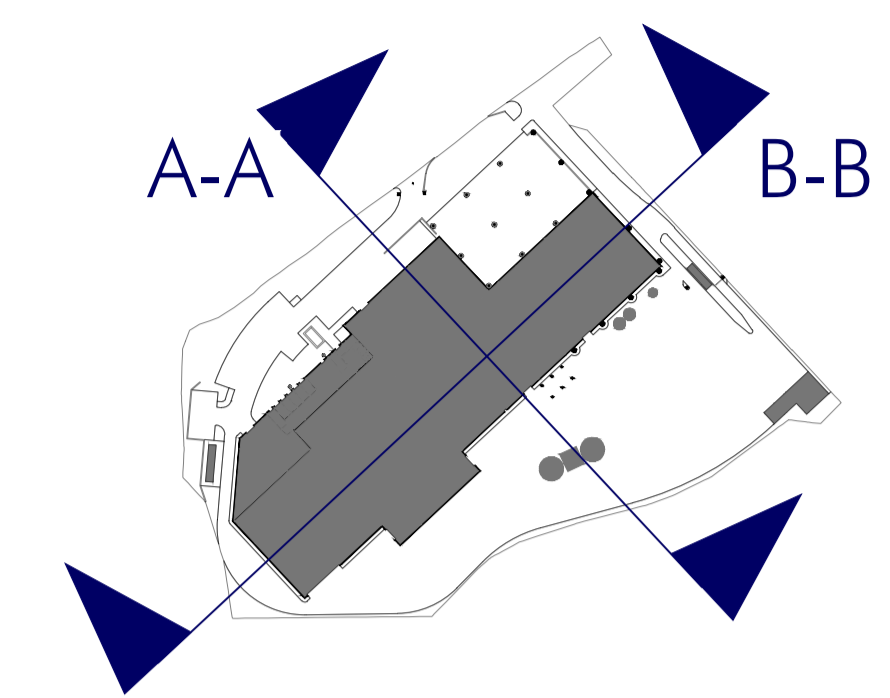
SCALE

5m 10m 15m 20m 25m

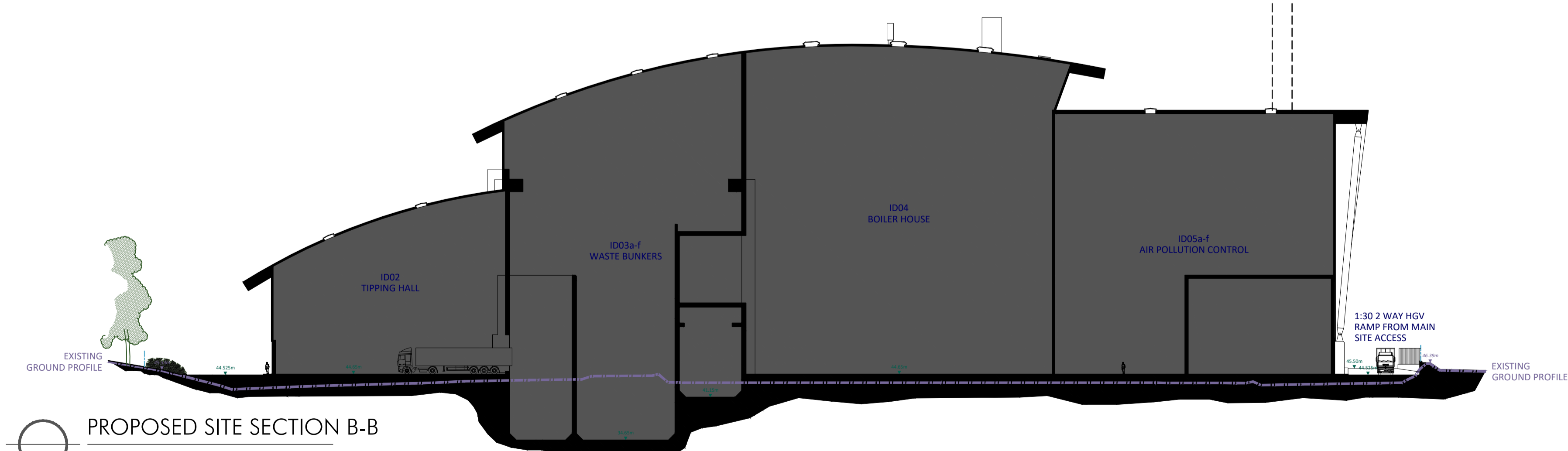


LEGEND

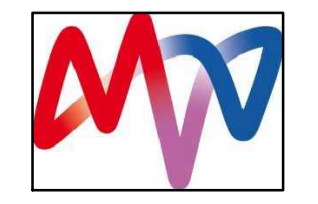
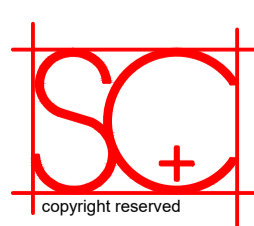
- ID01: Gatehouse / weighbridges
- ID02: Tipping hall
- ID03: Waste bunker building
 - (ID03a): Tipping bunker
 - (ID03b): Main waste bunker
 - (ID03c): Waste chute platform
 - (ID03d): Crane maintenance area
 - (ID03e): IBA Bunker
 - (ID03f): IBA loading enclosure
 - (ID03g): Back loading hatch
- ID04: Boiler house
- ID05: Air pollution control building
 - (ID05a): APC plant and reactor
 - (ID05b): Bag filter house
 - (ID05c): Induced draft (ID) fan
 - (ID05d): Compressed air station
 - (ID05e): Water treatment plant
 - (ID05f): Urea tank
- ID06: APCr silos
- ID07: Lime & activated carbon silos
- ID08: Chimney & CEMS platform
- ID09: Turbine hall
- ID10: Air cooled condenser (ACC)
- ID11: Water re-cooling system
- ID12: Future district heating equipment area
- ID13: Main transformer & switchgear
- ID14: Emergency diesel generator
- ID15: Diesel tanks
- ID16: Fire water tank & pump enclosure
 - (ID16a): Fire water tanks
 - (ID16b): Fire pump enclosure
- ID17: Switchgear building, administration building and control room
- ID18: Workshop & stores
- ID19: Lay-by area
- ID20: Parking areas
- ID21: HGV out of hours parking area
- ID22: Mobile crane slab
- ID23: Laydown / maintenance & future environmental requirements area



PROPOSED SITE SECTION A-A
SCALE 1 : 500 @ A1



PROPOSED SITE SECTION B-B
SCALE 1 : 500 @ A1

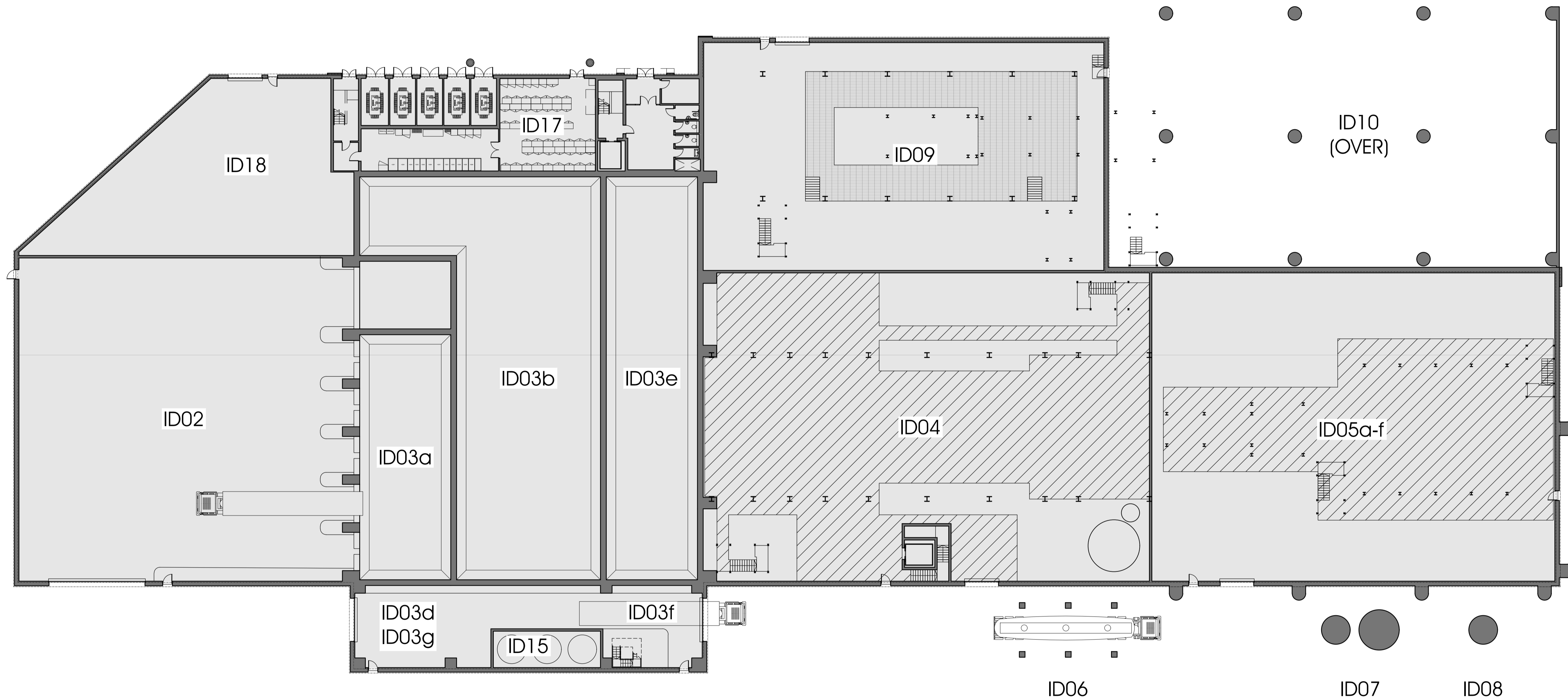
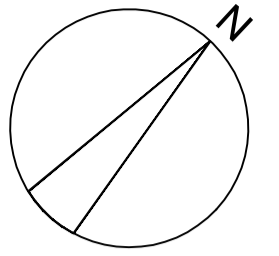


LEGEND

ID02: Tipping hall
 ID03: Waste bunker building
 (ID03a): Tipping bunker
 (ID03b): Main waste bunker
 (ID03c): Crane maintenance area
 (ID03d): IBA Bunker
 (ID03e): IBA loading enclosure
 (ID03f): Back loading hatch
 (ID03g): Boiler house
 ID04: Boiler house

ID05: Air pollution control building
 (ID05a): APC plant and reactor
 (ID05b): Bag filter house
 (ID05c): Induced draft (ID) fan
 (ID05d): Compressed air station
 (ID05e): Water treatment plant
 (ID05f): Urea tank
 ID06: APCr silos
 ID07: Lime & activated carbon silos

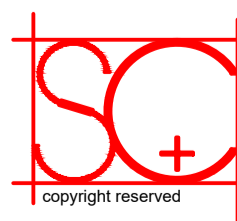
ID08: Chimney & CEMS platform
 ID09: Turbine hall
 ID10: Air cooled condenser (ACC)
 ID15: Diesel tanks
 ID17: Switchgear building, administration building and control room
 ID18: Workshop & stores



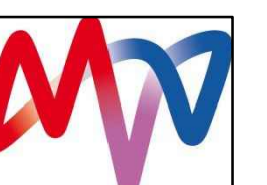
LEVELS INDICATED ARE BASED ON ADMINISTRATION BLOCK FINISHED FLOOR LEVELS

****ID04, ID05 & ID09 ARRANGEMENT OF PROCESS EQUIPMENT INDICATIVE ONLY****

GROUND FLOOR PLAN - FFL 44.650m AOD
 SCALE 1 : 250 @ A1



SC1643 / PR / 03 / A - 01/11/2022
CANFORD ENERGY FROM WASTE COMBINED HEAT AND POWER FACILITY - DORSET
 SAVAGE + CHADWICK ARCHITECTS

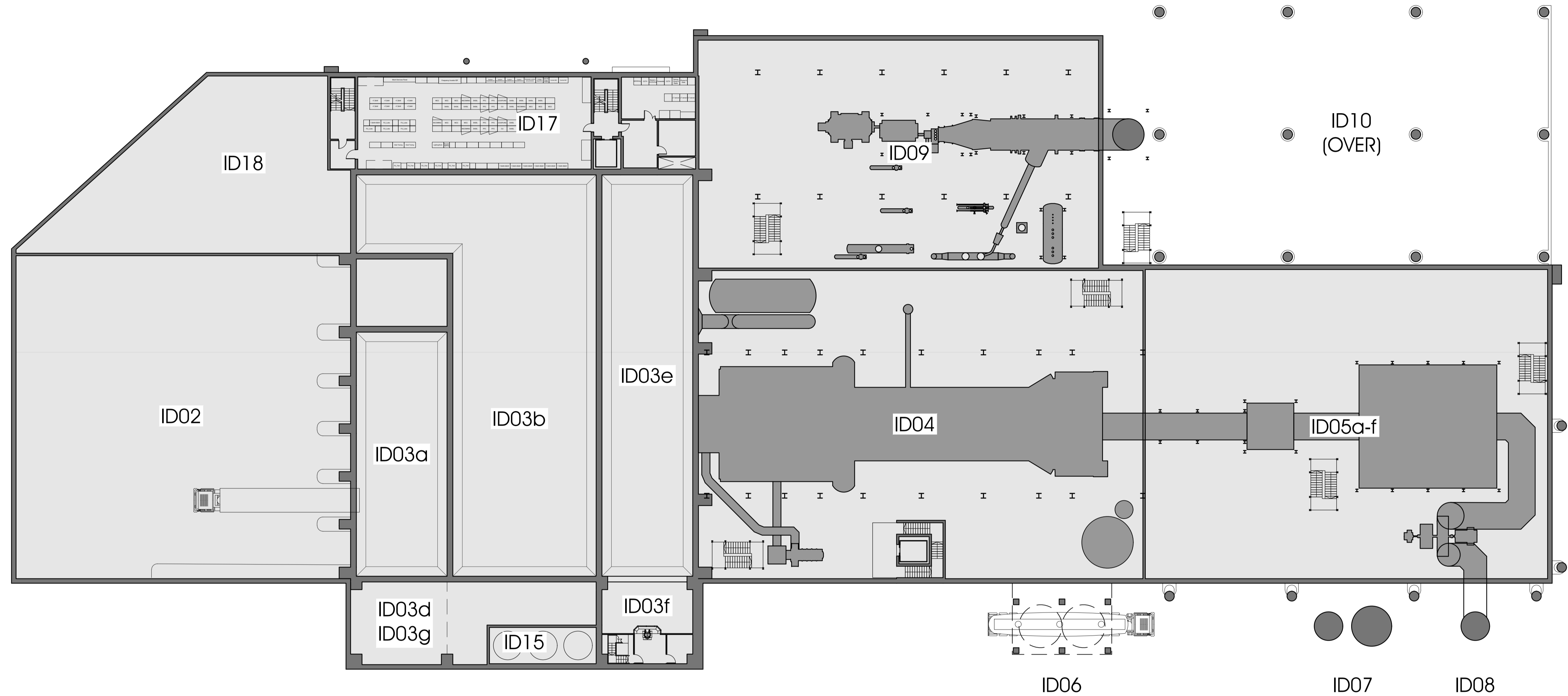
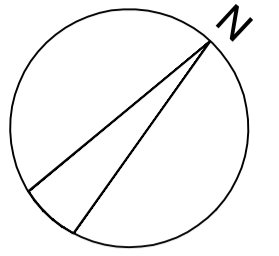


LEGEND

ID02: Tipping hall
 ID03: Waste bunker building
 (ID03a): Tipping bunker
 (ID03b): Main waste bunker
 (ID03c): Crane maintenance area
 (ID03d): IBA Bunker
 (ID03e): IBA loading enclosure
 (ID03f): IBA loading hatch
 (ID03g): Back loading hatch
 ID04: Boiler house

ID05: Air pollution control building
 (ID05a): APC plant and reactor
 (ID05b): Bag filter house
 (ID05c): Induced draft (ID) fan
 (ID05d): Compressed air station
 (ID05e): Water treatment plant
 (ID05f): Urea tank
 ID06: APCr silos
 ID07: Lime & activated carbon silos

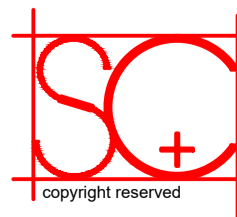
ID08: Chimney & CEMS platform
 ID09: Turbine hall
 ID10: Air cooled condenser (ACC)
 ID15: Diesel tanks
 ID17: Switchgear building, administration building and control room
 ID18: Workshop & stores



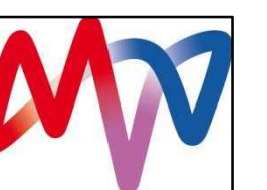
LEVELS INDICATED ARE BASED ON ADMINISTRATION BLOCK FINISHED FLOOR LEVELS

****ID04, ID05 & ID09 ARRANGEMENT OF PROCESS EQUIPMENT INDICATIVE ONLY****

FIRST FLOOR PLAN - FFL 51.425m AOD
 SCALE 1 : 250 @ A1



SC1643 / PR / 04 / A - 01/11/2022
CANFORD ENERGY FROM WASTE COMBINED HEAT AND POWER FACILITY - DORSET
 SAVAGE + CHADWICK ARCHITECTS

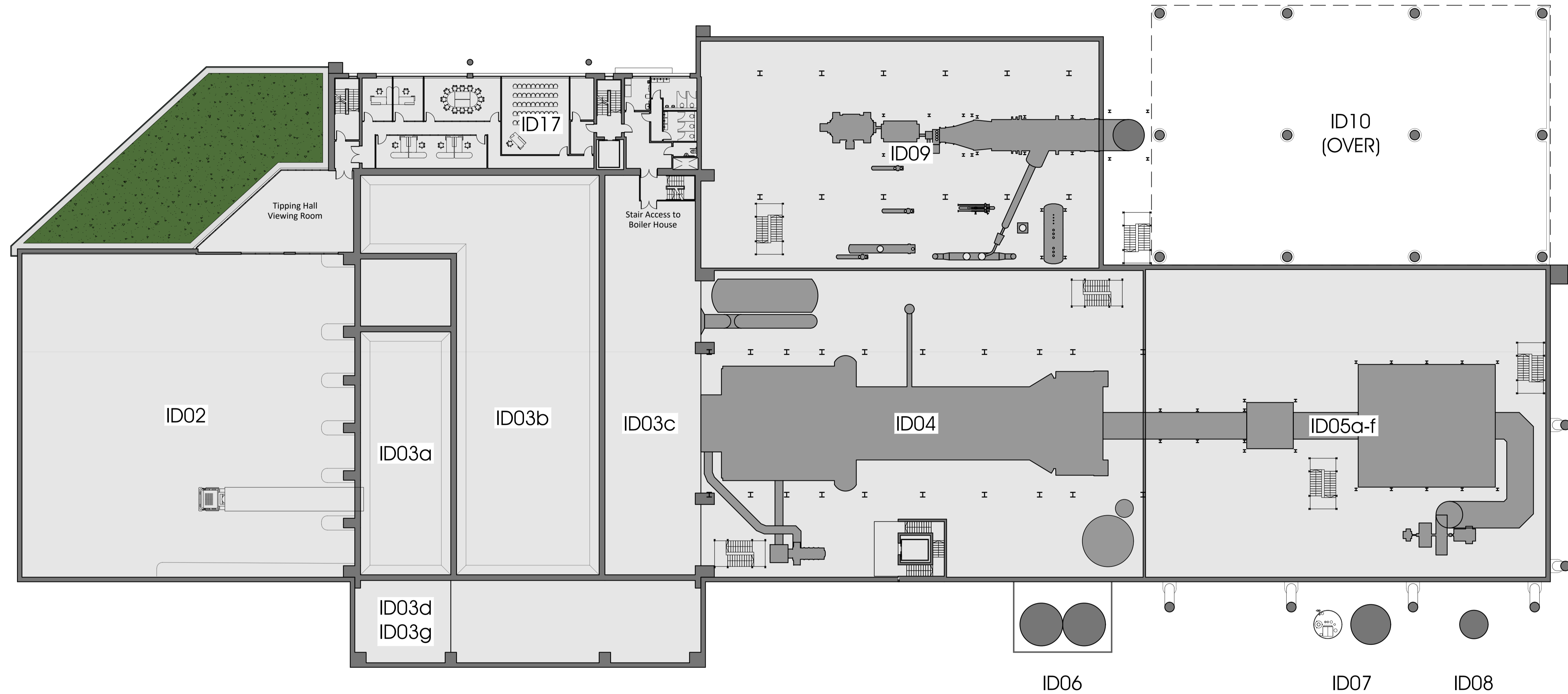
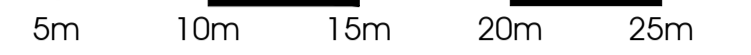
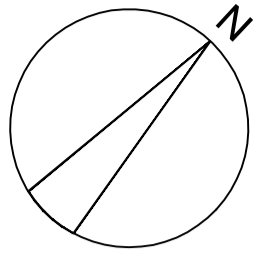


LEGEND

ID02: Tipping hall
 ID03: Waste bunker building
 (ID03a): Tipping bunker
 (ID03b): Main waste bunker
 (ID03c): Waste chute platform
 (ID03d): Crane maintenance area
 (ID03g): Back loading hatch
 ID04: Boiler house

ID05: Air pollution control building
 (ID05a): APC plant and reactor
 (ID05b): Bag filter house
 (ID05c): Induced draft (ID) fan
 (ID05d): Compressed air station
 (ID05e): Water treatment plant
 (ID05f): Urea tank
 ID06: APCr silos

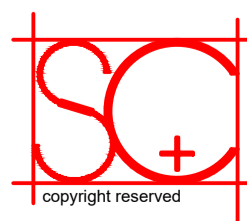
ID07: Lime & activated carbon silos
 ID08: Chimney & CEMS platform
 ID09: Turbine hall
 ID10: Air cooled condenser (ACC)
 ID17: Switchgear building, administration building and control room



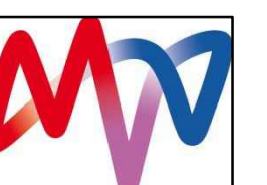
LEVELS INDICATED ARE BASED ON ADMINISTRATION BLOCK FINISHED FLOOR LEVELS

****ID04, ID05 & ID09 ARRANGEMENT OF PROCESS EQUIPMENT INDICATIVE ONLY****

SECOND FLOOR PLAN - FFL 58.200m AOD
 SCALE 1 : 250 @ A1



SC1643 / PR / 05 / A - 01/11/2022
 CANFORD ENERGY FROM WASTE COMBINED HEAT AND POWER FACILITY - DORSET
 SAVAGE + CHADWICK ARCHITECTS

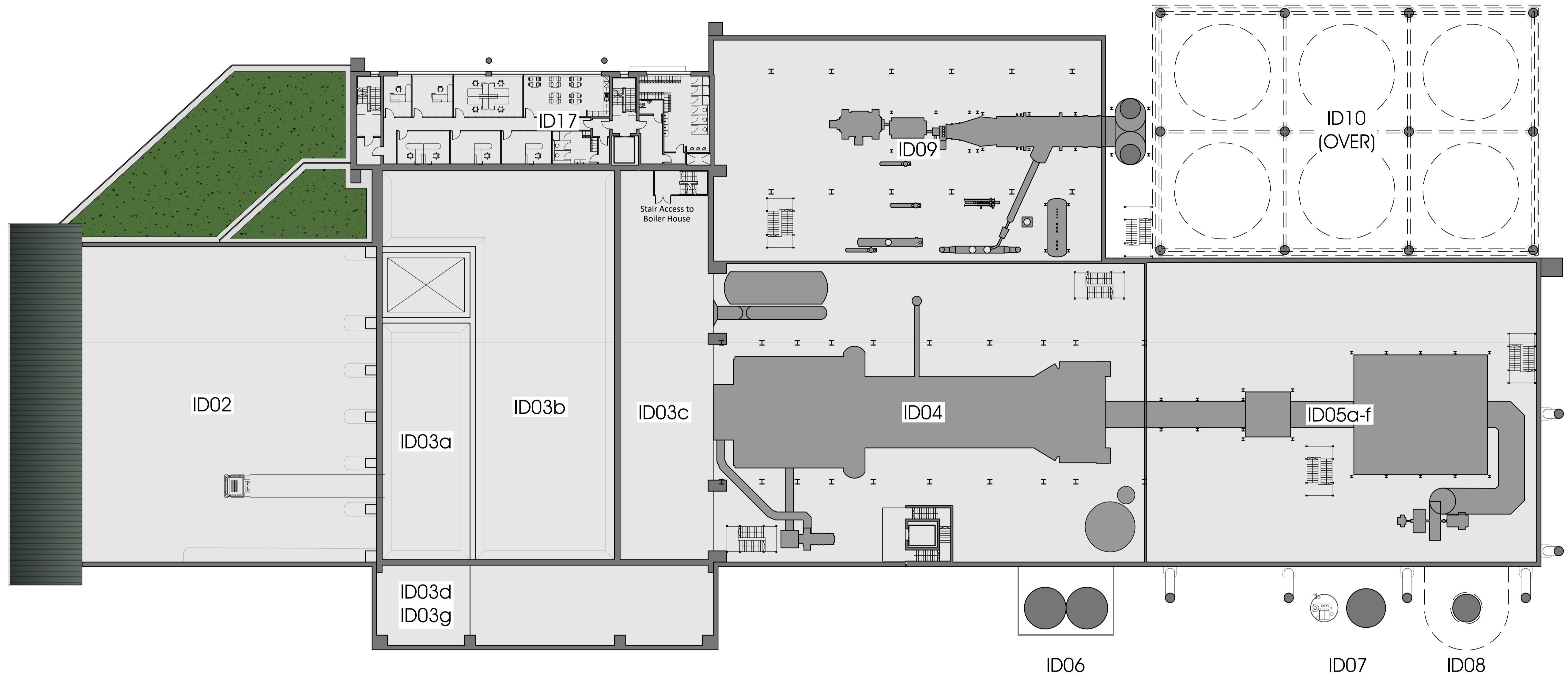
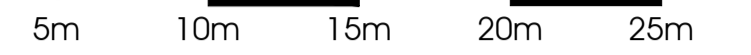
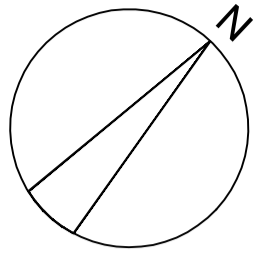


LEGEND

ID02: Tipping hall
 ID03: Waste bunker building
 (ID03a): Tipping bunker
 (ID03b): Main waste bunker
 (ID03c): Waste chute platform
 (ID03d): Crane maintenance area
 (ID03g): Back loading hatch
 ID04: Boiler house

ID05: Air pollution control building
 (ID05a): APC plant and reactor
 (ID05b): Bag filter house
 (ID05c): Induced draft (ID) fan
 (ID05d): Compressed air station
 (ID05e): Water treatment plant
 (ID05f): Urea tank
 ID06: APCr silos

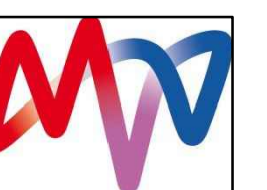
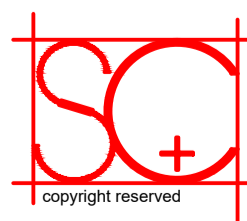
ID07: Lime & activated carbon silos
 ID08: Chimney & CEMS platform
 ID09: Turbine hall
 ID10: Air cooled condenser (ACC)
 ID17: Switchgear building, administration building and control room



LEVELS INDICATED ARE BASED ON ADMINISTRATION BLOCK FINISHED FLOOR LEVELS

****ID04, ID05, ID09 & ID10 ARRANGEMENT OF PROCESS EQUIPMENT INDICATIVE ONLY****

THIRD FLOOR PLAN - FFL 61.925m AOD
 SCALE 1 : 250 @ A1

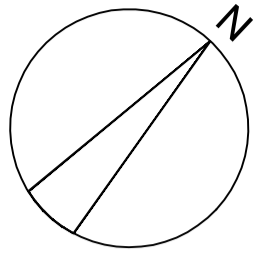


LEGEND

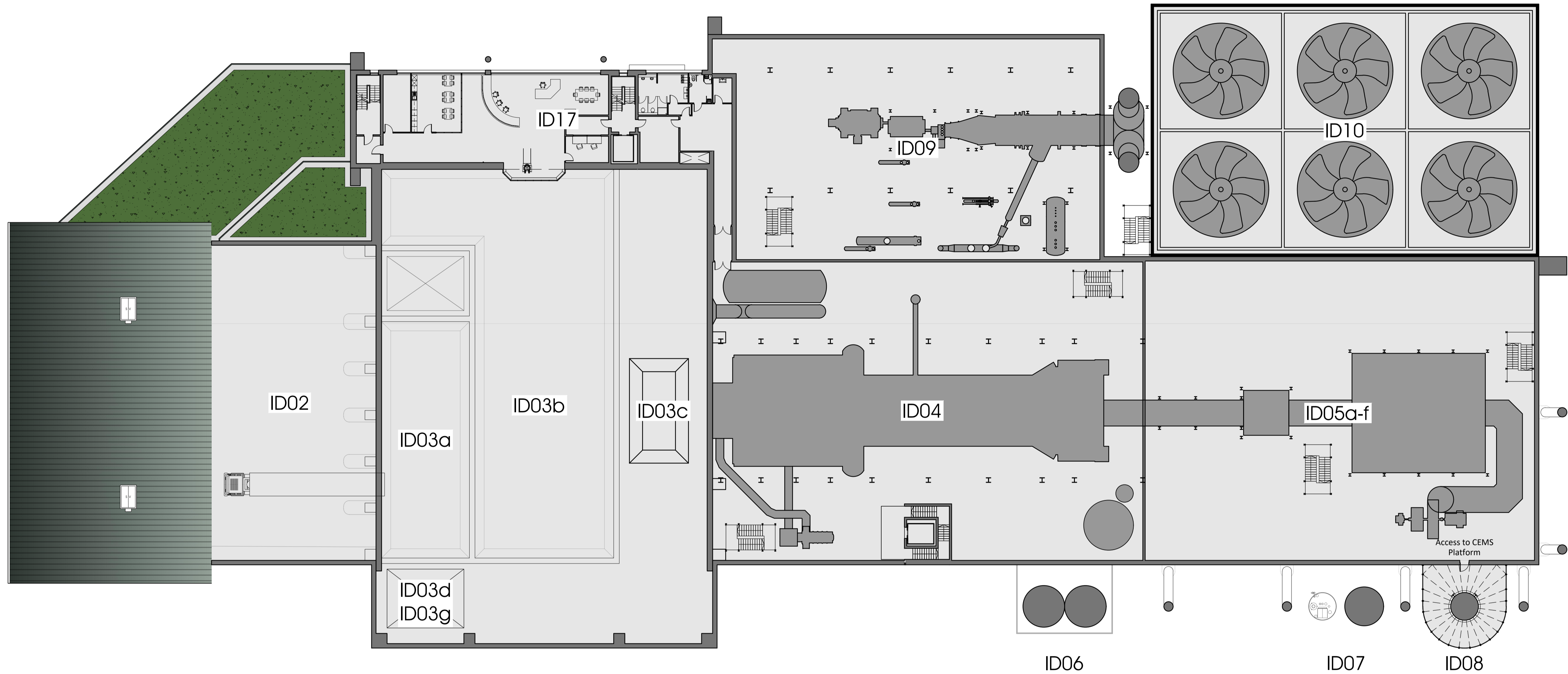
ID02: Tipping hall
 ID03: Waste bunker building
 (ID03a): Tipping bunker
 (ID03b): Main waste bunker
 (ID03c): Waste chute platform
 (ID03d): Crane maintenance area
 (ID03g): Back loading hatch
 ID04: Boiler house

ID05: Air pollution control building
 (ID05a): APC plant and reactor
 (ID05b): Bag filter house
 (ID05c): Induced draft (ID) fan
 (ID05d): Compressed air station
 (ID05e): Water treatment plant
 (ID05f): Urea tank
 ID06: APCr silos

ID07: Lime & activated carbon silos
 ID08: Chimney & CEMS platform
 ID09: Turbine hall
 ID10: Air cooled condenser (ACC)
 ID17: Switchgear building, administration building and control room



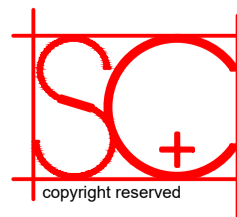
5m 10m 15m 20m 25m



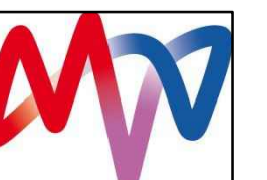
LEVELS INDICATED ARE BASED ON ADMINISTRATION BLOCK FINISHED FLOOR LEVELS

****ID04, ID05, ID09 & ID10 ARRANGEMENT OF PROCESS EQUIPMENT INDICATIVE ONLY****

FOURTH FLOOR PLAN - FFL 67.650m AOD
 SCALE 1 : 250 @ A1



SC1643 / PR / 07 / A - 01/11/2022
 CANFORD ENERGY FROM WASTE COMBINED HEAT AND POWER FACILITY - DORSET
 SAVAGE + CHADWICK ARCHITECTS

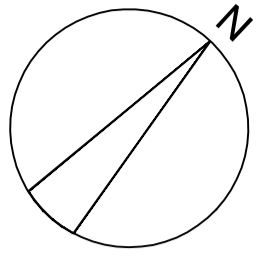


LEGEND

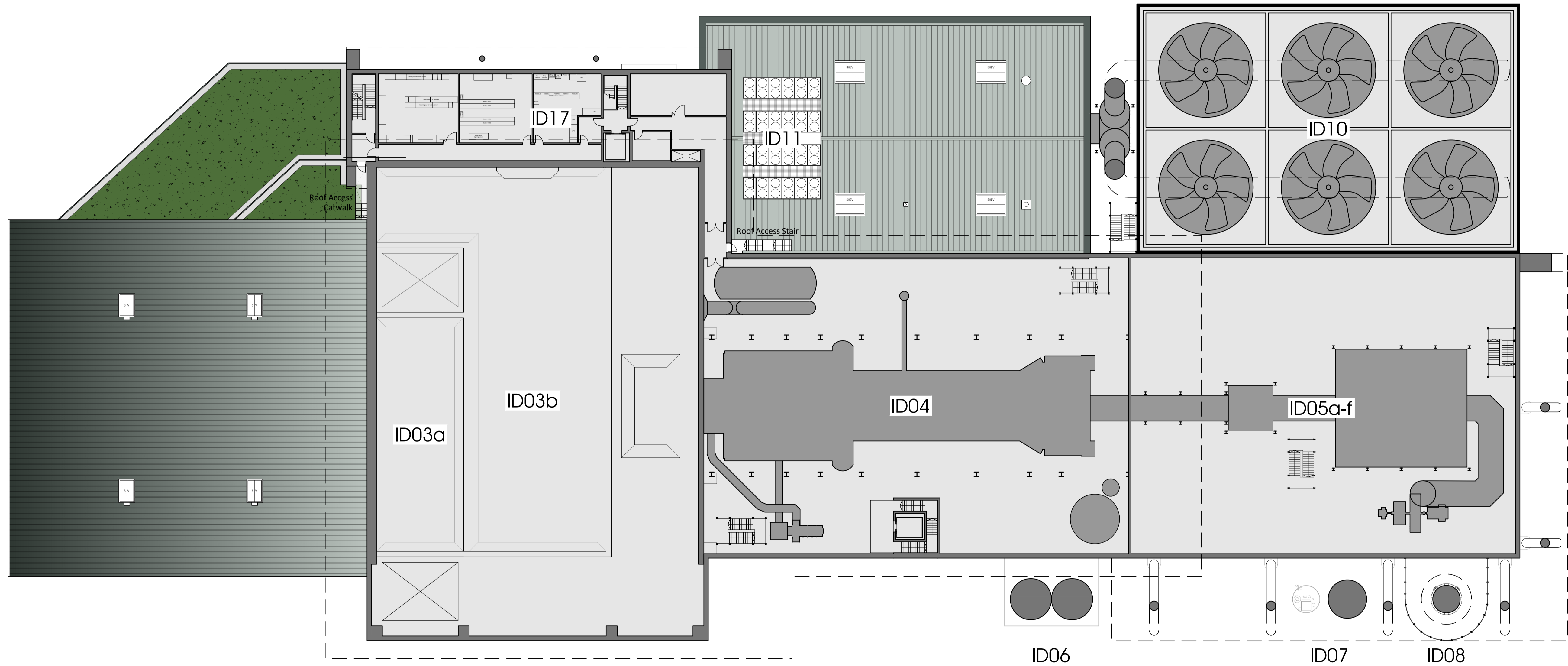
ID02: Tipping hall
 ID03: Waste bunker building
 (ID03a): Tipping bunker
 (ID03b): Main waste bunker
 (ID03c): Waste chute platform
 ID04: Boiler house

ID05: Air pollution control building
 (ID05a): APC plant and reactor
 (ID05b): Bag filter house
 (ID05c): Induced draft (ID) fan
 (ID05d): Compressed air station
 (ID05e): Water treatment plant
 (ID05f): Urea tank

ID06: APCr silos
 ID07: Lime & activated carbon silos
 ID08: Chimney & CEMS platform
 ID10: Air cooled condenser (ACC)
 ID11: Water re-cooling system
 ID17: Switchgear building, administration building and control room



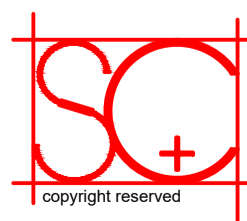
5m 10m 15m 20m 25m



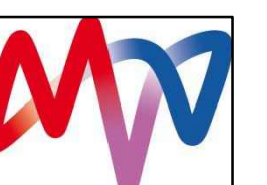
LEVELS INDICATED ARE BASED ON ADMINISTRATION BLOCK FINISHED FLOOR LEVELS

****ID04, ID05 & ID10 ARRANGEMENT OF PROCESS EQUIPMENT INDICATIVE ONLY****




FIFTH FLOOR PLAN - FFL 71.375m AOD
 SCALE 1 : 250 @ A1



SC1643 / PR / 08 / A - 01/11/2022
 CANFORD ENERGY FROM WASTE COMBINED HEAT AND POWER FACILITY - DORSET
 SAVAGE + CHADWICK ARCHITECTS

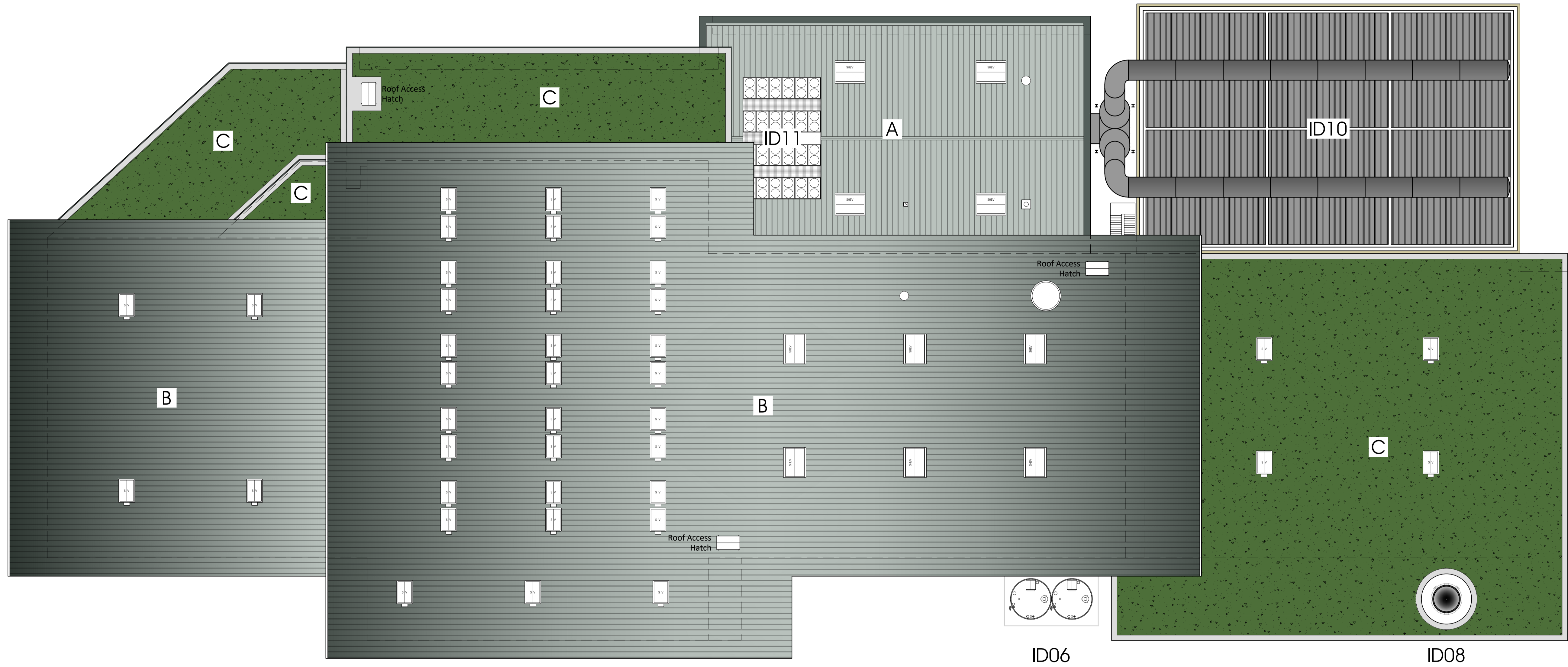
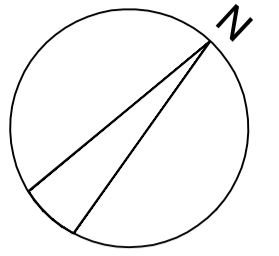


KEY

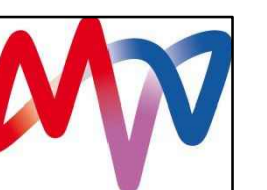
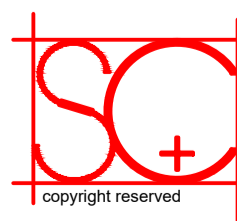
- A Low pitch, trapezoidal, insulated roof panel Kingspan KS1000RW or equivalent.
in Goosewing Grey 
- B Curved, trapezoidal, insulated roof panel Kingspan KS1000RW or equivalent.
in Goosewing Grey 
- C Sedum/green flat roof 

LEGEND

- ID06: APCr silos
- ID08: Chimney & CEMS platform
- ID10: Air cooled condenser (ACC)
- ID11: Water re-cooling system



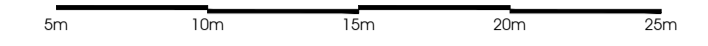
 ROOF PLAN
SCALE 1 : 250 @ A1



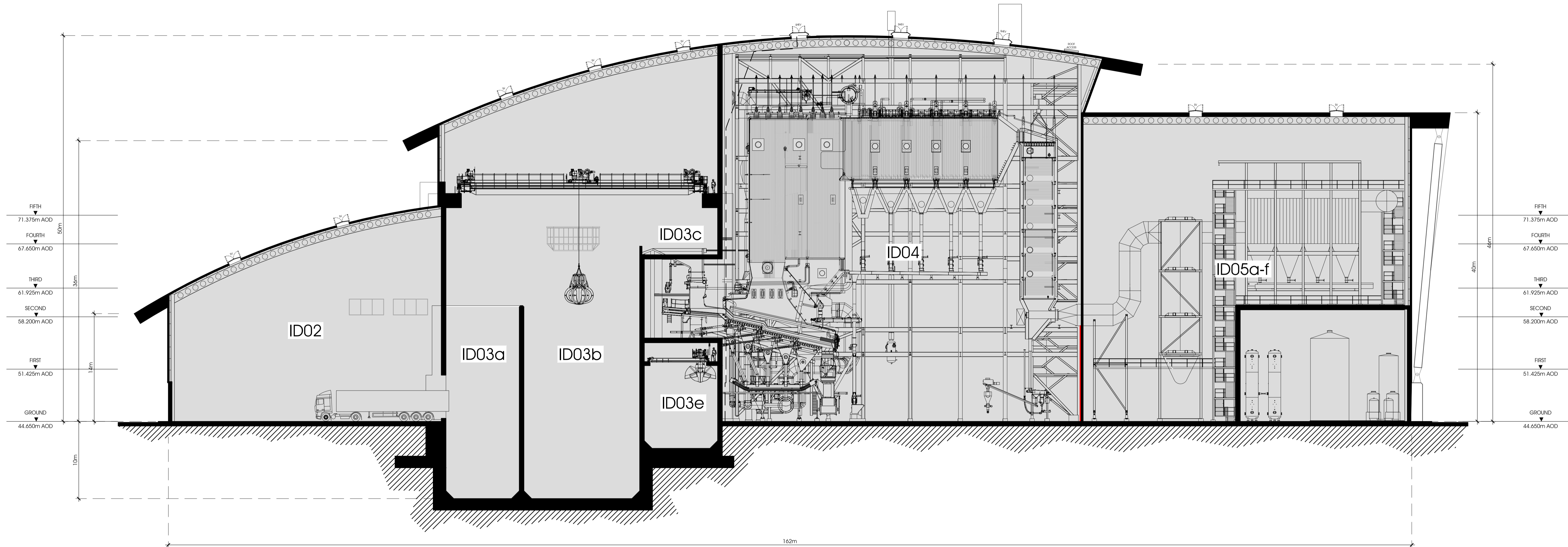
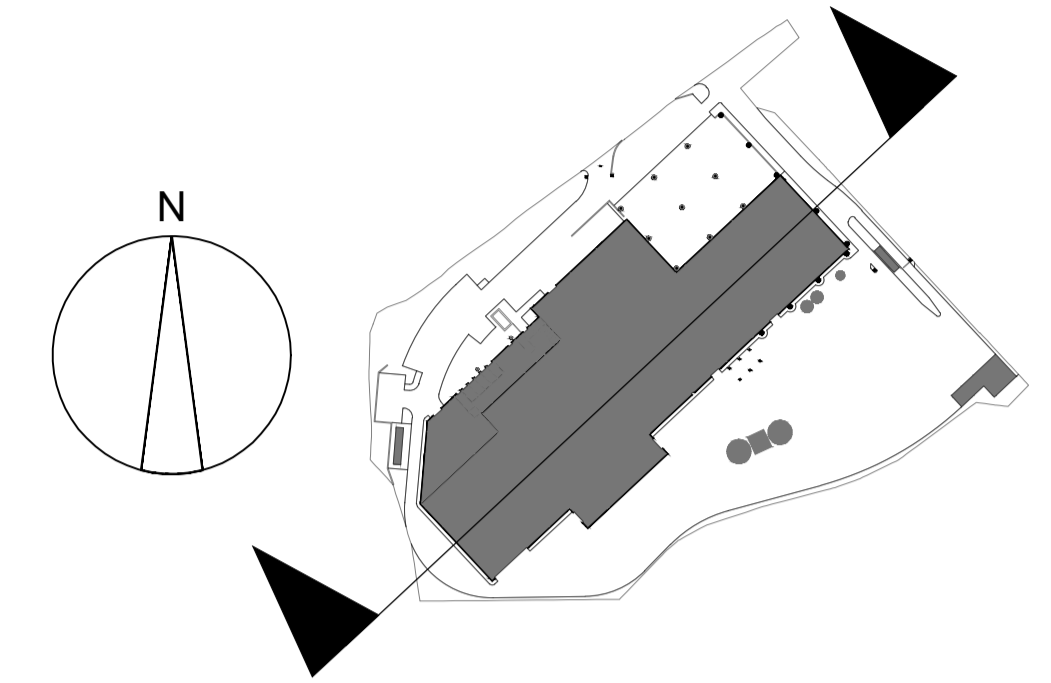
LEGEND

- ID02: Tipping hall
- ID03: Waste bunker building
 - (ID03a): Tipping bunker
 - (ID03b): Main waste bunker
 - (ID03c): Waste chute platform
 - (ID03d): Crane maintenance area
 - (ID03e): IBA Bunker
 - (ID03f): IBA loading enclosure
 - (ID03g): Back loading hatch
- ID04: Boiler house
- ID05: Air pollution control building
 - (ID05a): APC plant and reactor
 - (ID05b): Bag filter house
 - (ID05c): Induced draft (ID) fan
 - (ID05d): Compressed air station
 - (ID05e): Water treatment plant
 - (ID05f): Urea tank

SCALE



KEY



LEVELS INDICATED ARE BASED ON ADMINISTRATION BLOCK FINISHED FLOOR LEVELS

****ID04 & ID05 ARRANGEMENT OF PROCESS EQUIPMENT INDICATIVE ONLY****

INDICATIVE LONG SECTION
SCALE 1 : 250 @ A1



MATERIALS & FINISHES

ROOF FINISH

TRAPEZOIDAL INSULATED PANEL - KINGSPAN KS1000RW OR EQUIVALENT.

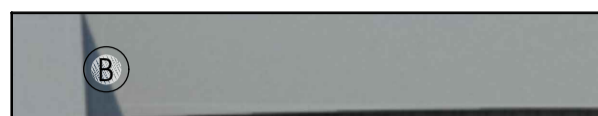
IN GOOSEWING GREY
RAL 080 70 05



EAVES & FASCIAS

POWDER COATED FLASHINGS & TRIMS WITH TRAPEZOIDAL INSULATED SOFFIT - KS1000RW OR EQUIVALENT.

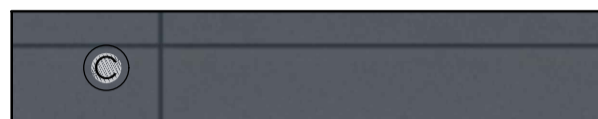
IN PURE GREY
RAL 000 55 00



FEATURE CLADDING SURROUNDS

FLAT INSULATED CLADDING PANELS - KINGSPAN QUADCORE AWP OR EQUIVALENT.

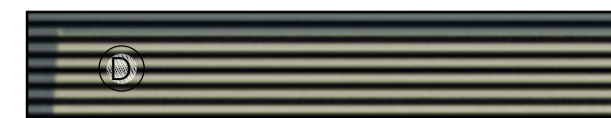
IN MERLIN GREY
RAL 180 40 05



FEATURE FINISHES

HORIZONTAL FIN PROFILE RAINSCREEN CLADDING OR EQUIVALENT

IN WILLOW GREEN
RAL 100 80 20

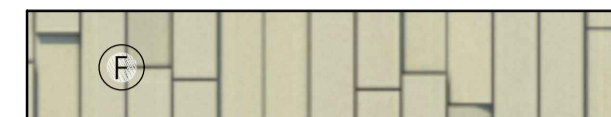


& AUTUMN
RAL 040 50 20



KINGSPAN "DRI-DESIGN" PANEL RAINSCREEN CLADDING OR EQUIVALENT.

IN WILLOW GREEN
RAL 100 80 20



FLAT INSULATED CLADDING PANELS - KINGSPAN QUADCORE AWP OR EQUIVALENT.

IN WHITE
RAL 9003



VERTICAL FADE PAINT FINISH TO SILOS & CHIMNEY

FROM MERLIN TO
GOOSEWING GREY



GENERAL WALL CLADDING

VERTICALLY ORIENTATED KINGSPAN QUADCORE CURVED WALL PANELS OR EQUIVALENT.

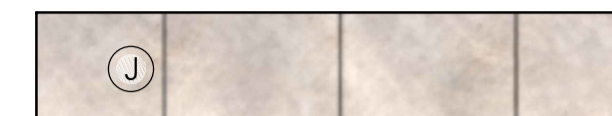
IN SILVER
RAL 9006



PLINTHS AND COLUMN BASES

SMOOTH FINISHED PRECAST CONCRETE.

IN NATURAL FINISH



WINDOWS AND DOORS

WINDOWS & DOORS TO BE POWDER COATED ALUMINIUM OR EQUIVALENT

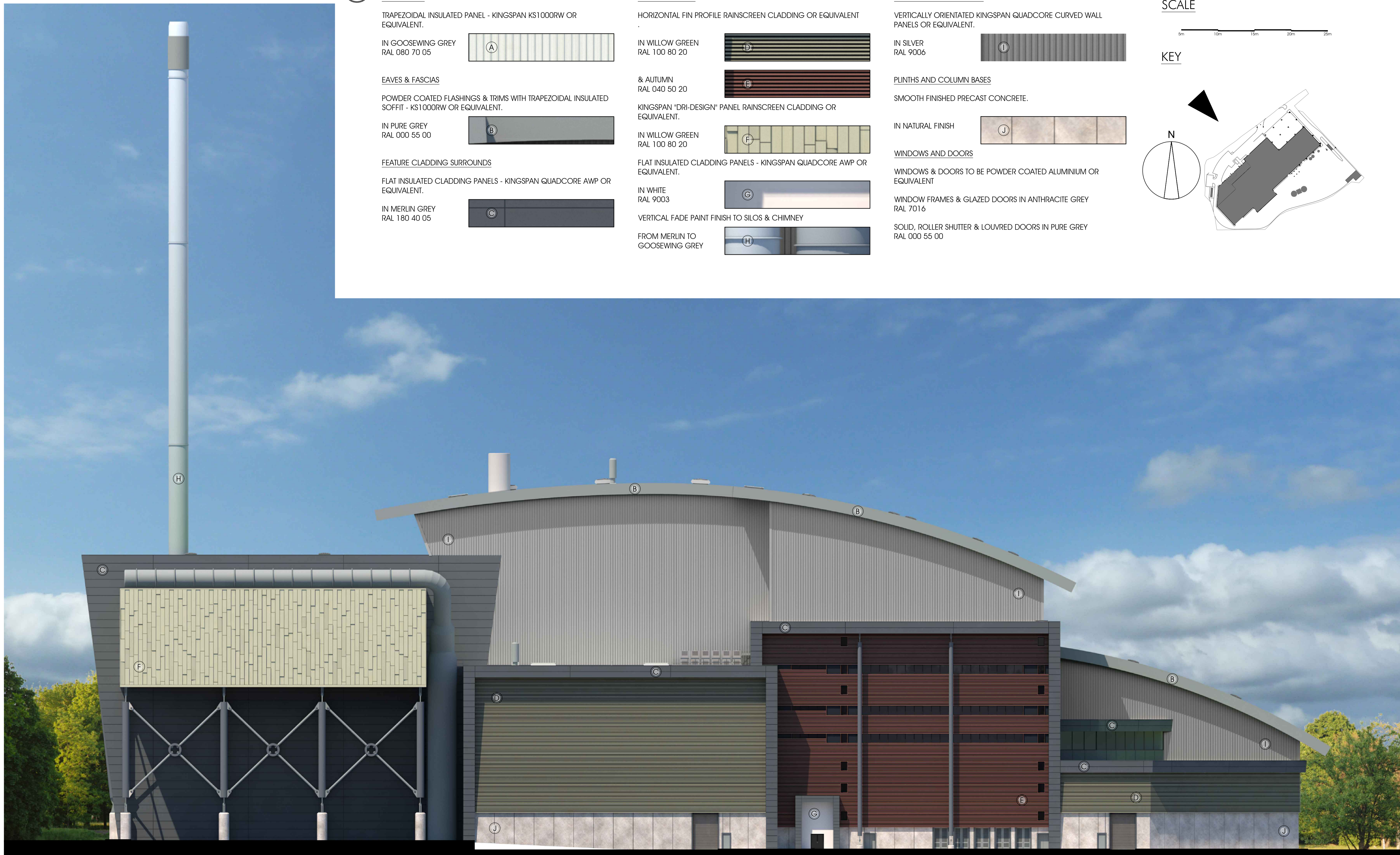
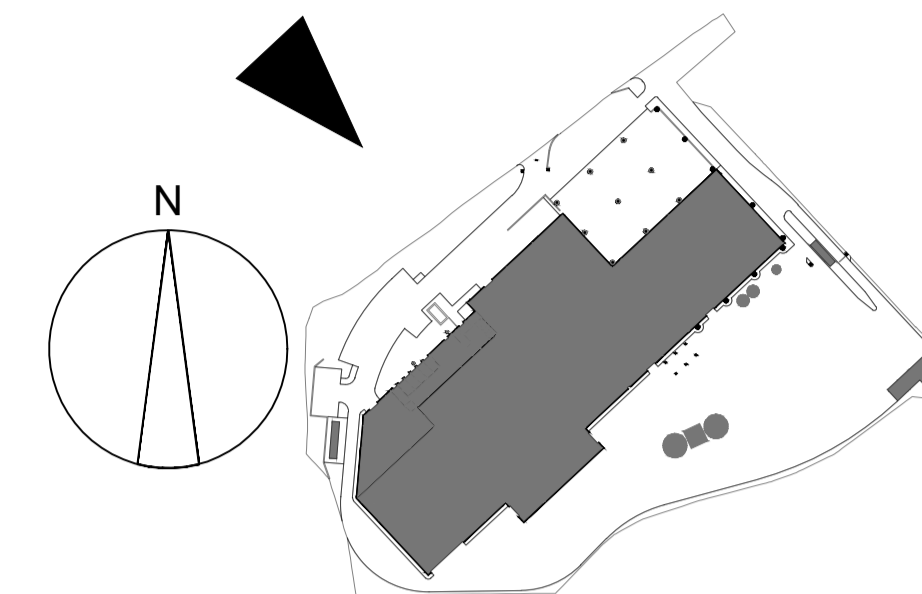
WINDOW FRAMES & GLAZED DOORS IN ANTHRACITE GREY
RAL 7016

SOLID, ROLLER SHUTTER & LOUVRED DOORS IN PURE GREY
RAL 000 55 00

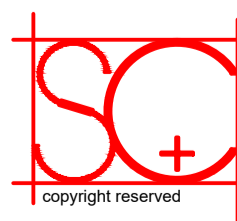
SCALE



KEY



NORTH WESTERN ELEVATION
SCALE 1 : 250 @ A1



SC1643 / PR / 11 / A - 01/11/2022

CANFORD ENERGY FROM WASTE COMBINED HEAT AND POWER FACILITY - DORSET
SAVAGE + CHADWICK ARCHITECTS



MATERIALS & FINISHES

ROOF FINISH

TRAPEZOIDAL INSULATED PANEL - KINGSPAN KS1000RW OR EQUIVALENT.

IN GOOSEWING GREY
RAL 080 70 05



EAVES & FASCIAS

POWDER COATED FLASHINGS & TRIMS WITH TRAPEZOIDAL INSULATED SOFFIT - KS1000RW OR EQUIVALENT.

IN PURE GREY
RAL 000 55 00



FEATURE CLADDING SURROUNDS

FLAT INSULATED CLADDING PANELS - KINGSPAN QUADCORE AWP OR EQUIVALENT.

IN MERLIN GREY
RAL 180 40 05



FEATURE FINISHES

HORIZONTAL FIN PROFILE RAINSCREEN CLADDING OR EQUIVALENT

IN WILLOW GREEN
RAL 100 80 20



& AUTUMN
RAL 040 50 20



KINGSPAN "DRI-DESIGN" PANEL RAINSCREEN CLADDING OR EQUIVALENT.

IN WILLOW GREEN
RAL 100 80 20



FLAT INSULATED CLADDING PANELS - KINGSPAN QUADCORE AWP OR EQUIVALENT.

IN WHITE
RAL 9003



VERTICAL FADE PAINT FINISH TO SILOS & CHIMNEY

FROM MERLIN TO
GOOSEWING GREY



GENERAL WALL CLADDING

VERTICALLY ORIENTATED KINGSPAN QUADCORE CURVED WALL PANELS OR EQUIVALENT.

IN SILVER
RAL 9006



PLINTHS AND COLUMN BASES

SMOOTH FINISHED PRECAST CONCRETE.

IN NATURAL FINISH



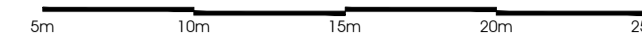
WINDOWS AND DOORS

WINDOWS & DOORS TO BE POWDER COATED ALUMINIUM OR EQUIVALENT

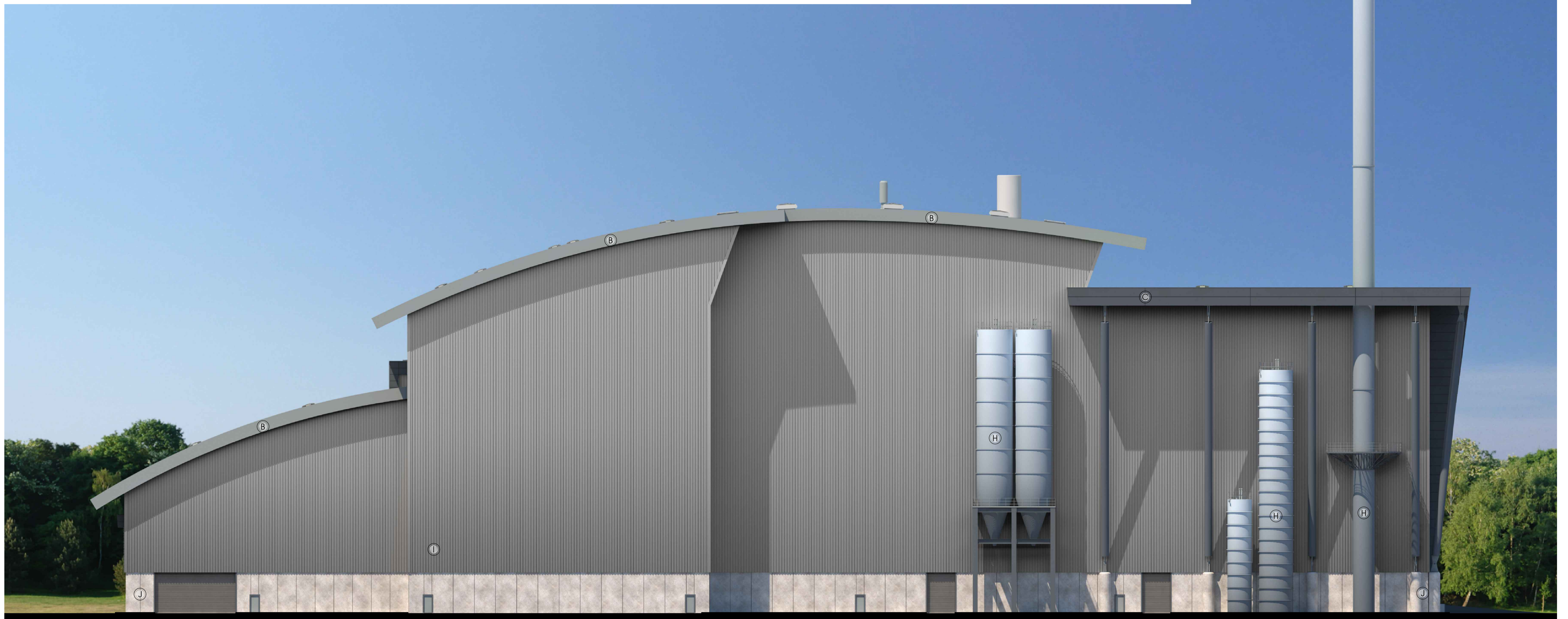
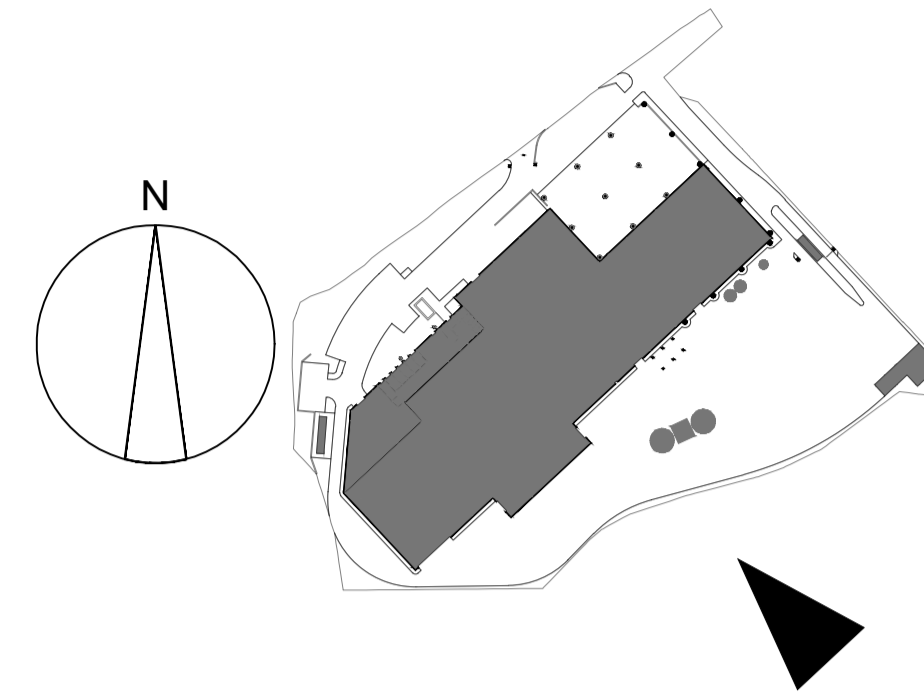
WINDOW FRAMES & GLAZED DOORS IN ANTHRACITE GREY
RAL 7016

SOLID, ROLLER SHUTTER & LOUVRED DOORS IN PURE GREY
RAL 000 55 00

SCALE

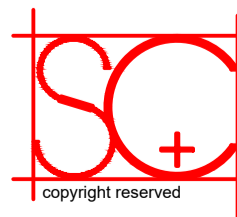


KEY



SOUTH EASTERN ELEVATION

SCALE 1 : 250 @ A1



SC1643 / PR / 12 / A - 01/11/2022

CANFORD ENERGY FROM WASTE COMBINED HEAT AND POWER FACILITY - DORSET
SAVAGE + CHADWICK ARCHITECTS



MATERIALS & FINISHES

ROOF FINISH

TRAPEZOIDAL INSULATED PANEL - KINGSPAN KS1000RW OR EQUIVALENT.

IN GOOSEWING GREY
RAL 080 70 05



EAVES & FASCIAS

POWDER COATED FLASHINGS & TRIMS WITH TRAPEZOIDAL INSULATED SOFFIT - KS1000RW OR EQUIVALENT.

IN PURE GREY
RAL 000 55 00



FEATURE CLADDING SURROUNDS

FLAT INSULATED CLADDING PANELS - KINGSPAN QUADCORE AWP OR EQUIVALENT.

IN MERLIN GREY
RAL 180 40 05



FEATURE FINISHES

HORIZONTAL FIN PROFILE RAINSCREEN CLADDING OR EQUIVALENT

IN WILLOW GREEN
RAL 100 80 20

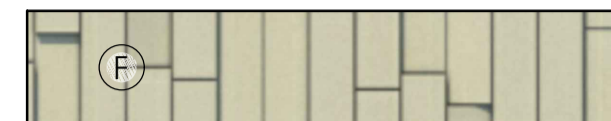


& AUTUMN
RAL 040 50 20



KINGSPAN "DRI-DESIGN" PANEL RAINSCREEN CLADDING OR EQUIVALENT.

IN WILLOW GREEN
RAL 100 80 20



FLAT INSULATED CLADDING PANELS - KINGSPAN QUADCORE AWP OR EQUIVALENT.

IN WHITE
RAL 9003



VERTICAL FADE PAINT FINISH TO SILOS & CHIMNEY

FROM MERLIN TO
GOOSEWING GREY



GENERAL WALL CLADDING

VERTICALLY ORIENTATED KINGSPAN QUADCORE CURVED WALL PANELS OR EQUIVALENT.

IN SILVER
RAL 9006



PLINTHS AND COLUMN BASES

SMOOTH FINISHED PRECAST CONCRETE.

IN NATURAL FINISH



WINDOWS AND DOORS

WINDOWS & DOORS TO BE POWDER COATED ALUMINIUM OR EQUIVALENT

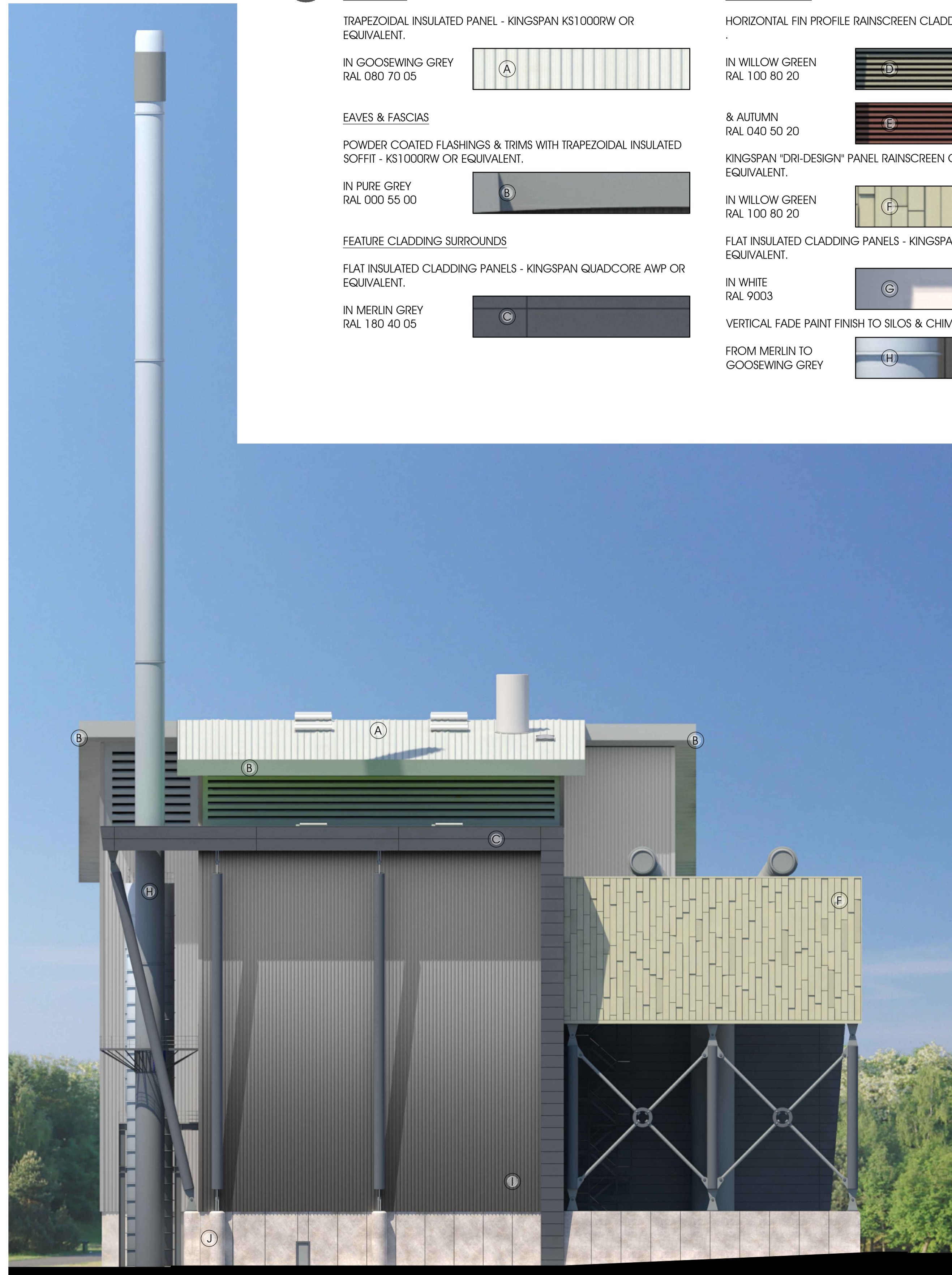
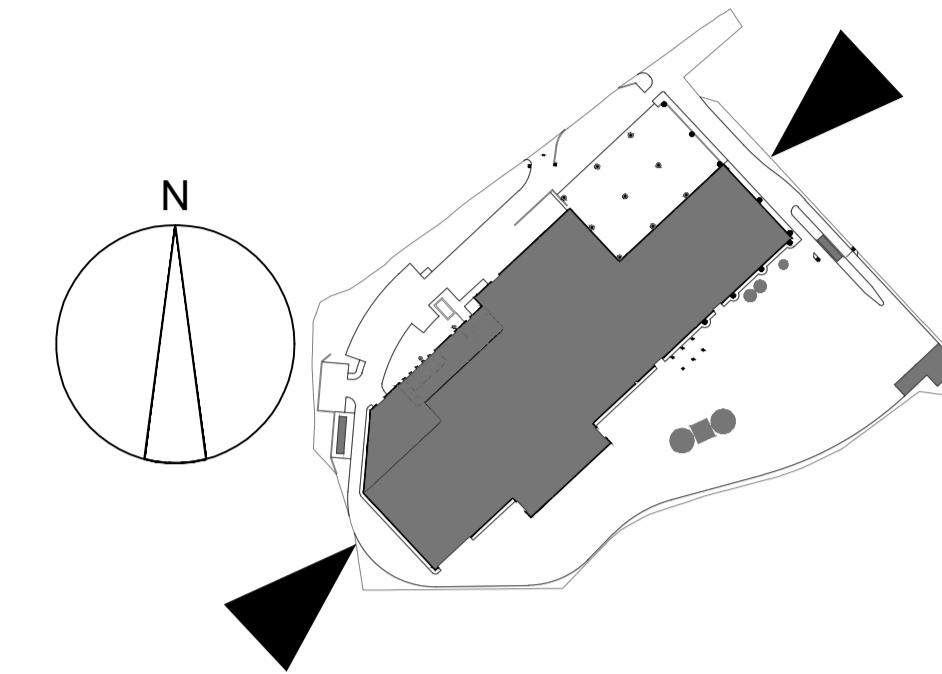
WINDOW FRAMES & GLAZED DOORS IN ANTHRACITE GREY
RAL 7016

SOLID, ROLLER SHUTTER & LOUVRED DOORS IN PURE GREY
RAL 000 55 00

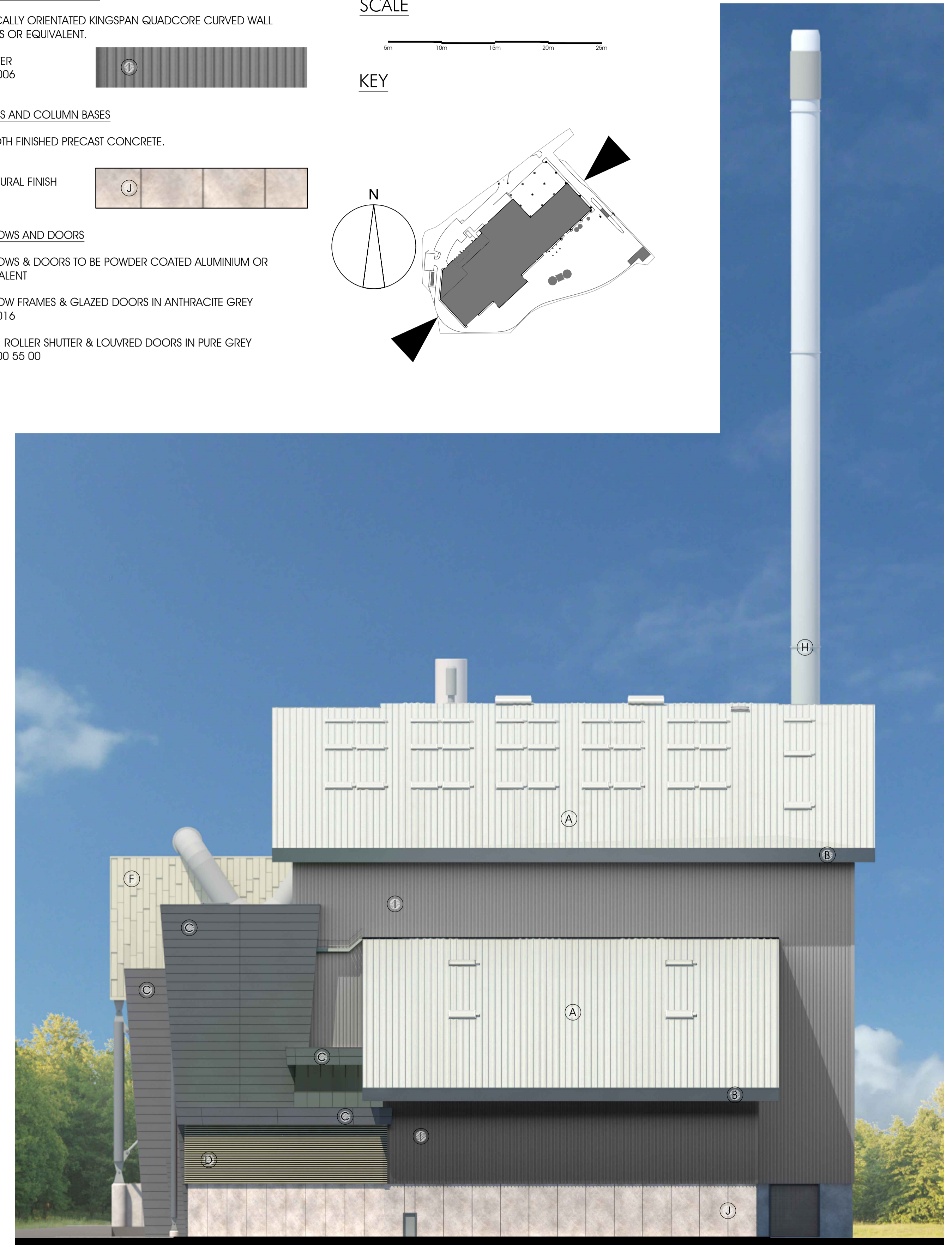
SCALE

5m 10m 15m 20m 25m

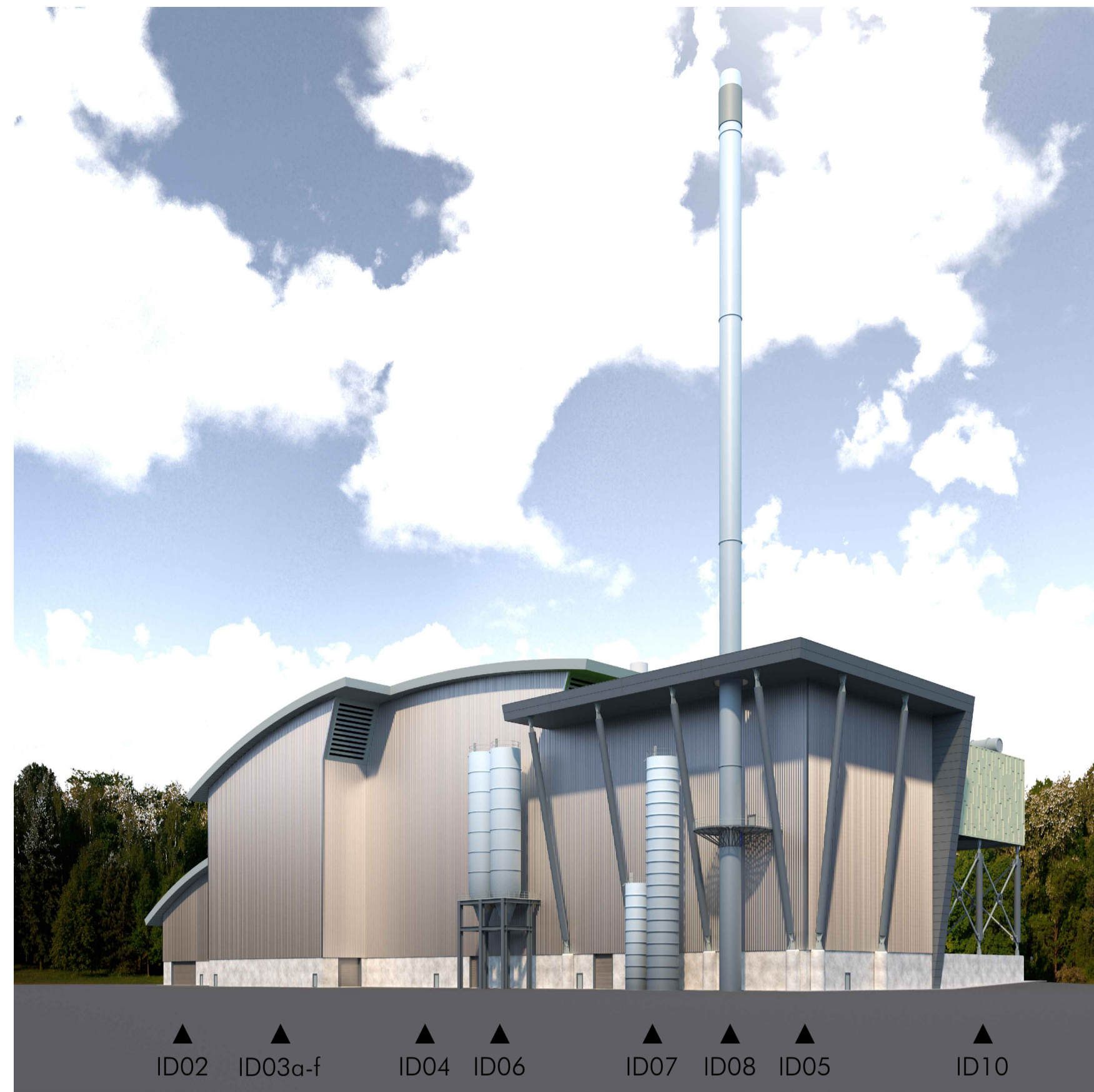
KEY



NORTH EASTERN ELEVATION
SCALE 1 : 250 @ A1

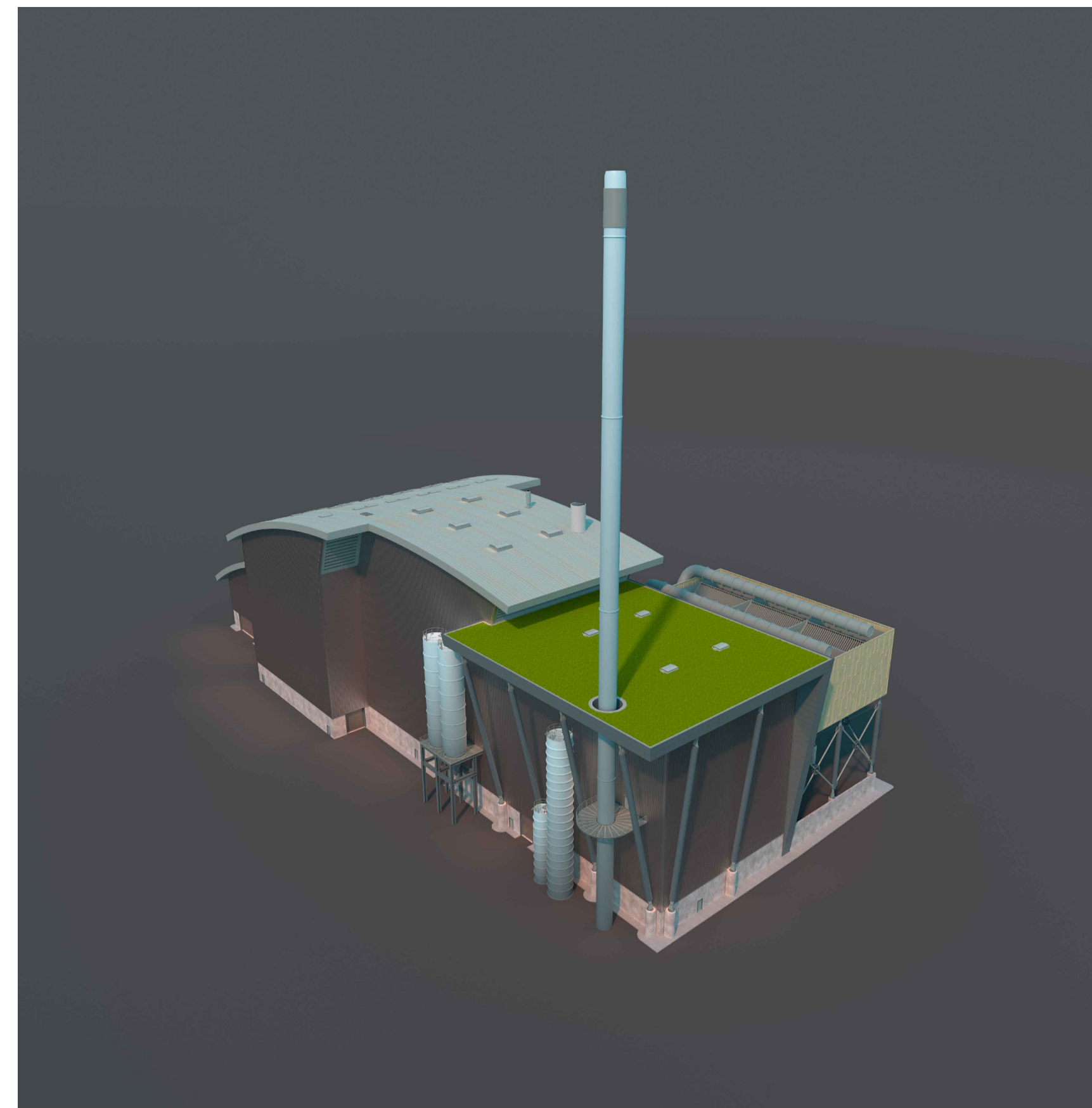


SOUTH WESTERN ELEVATION
SCALE 1 : 250 @ A1

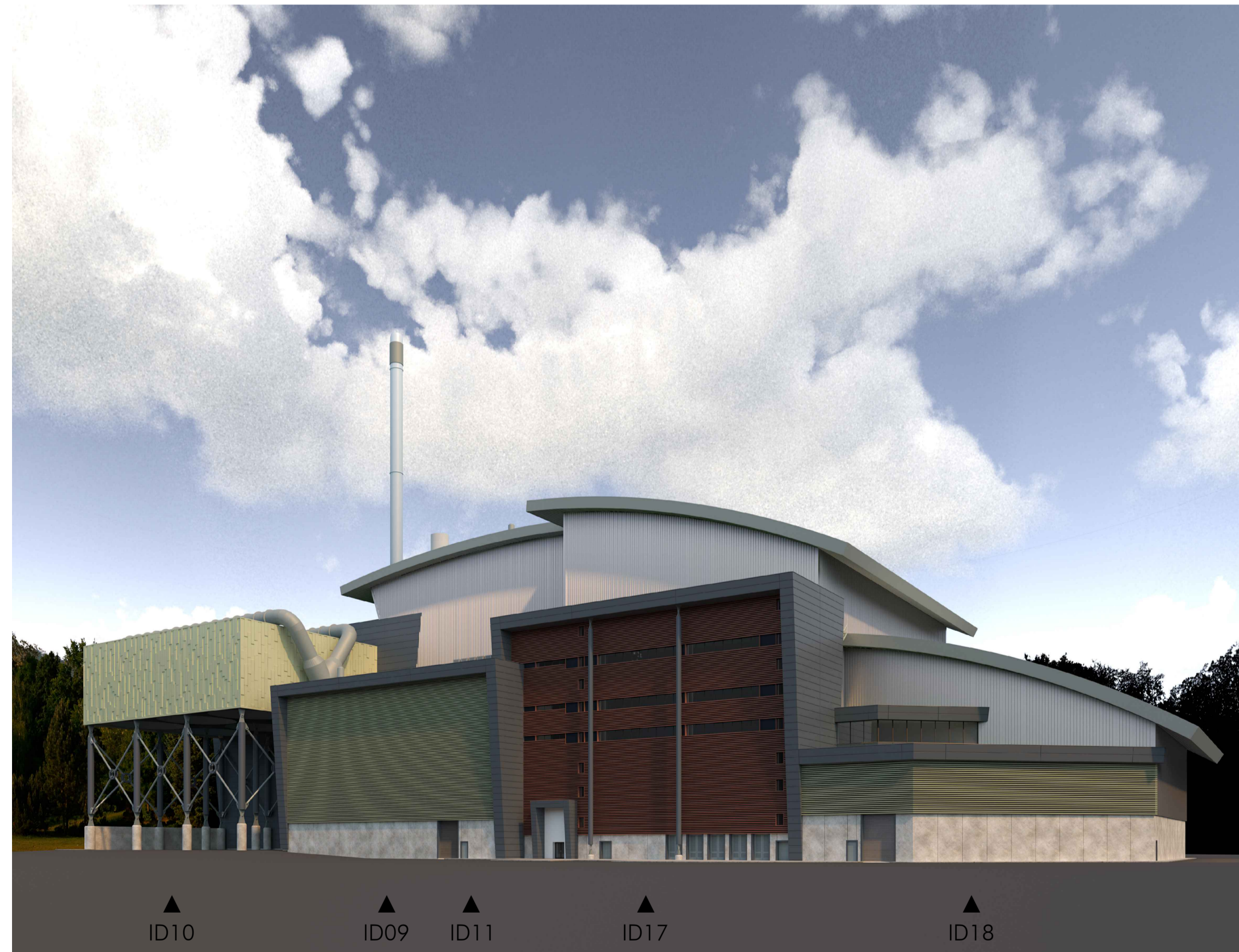


▲ ID02 ▲ ID03a-f ▲ ID04 ▲ ID06 ▲ ID07 ▲ ID08 ▲ ID05 ▲ ID10

○ AS VIEWED FROM THE EAST
NTS

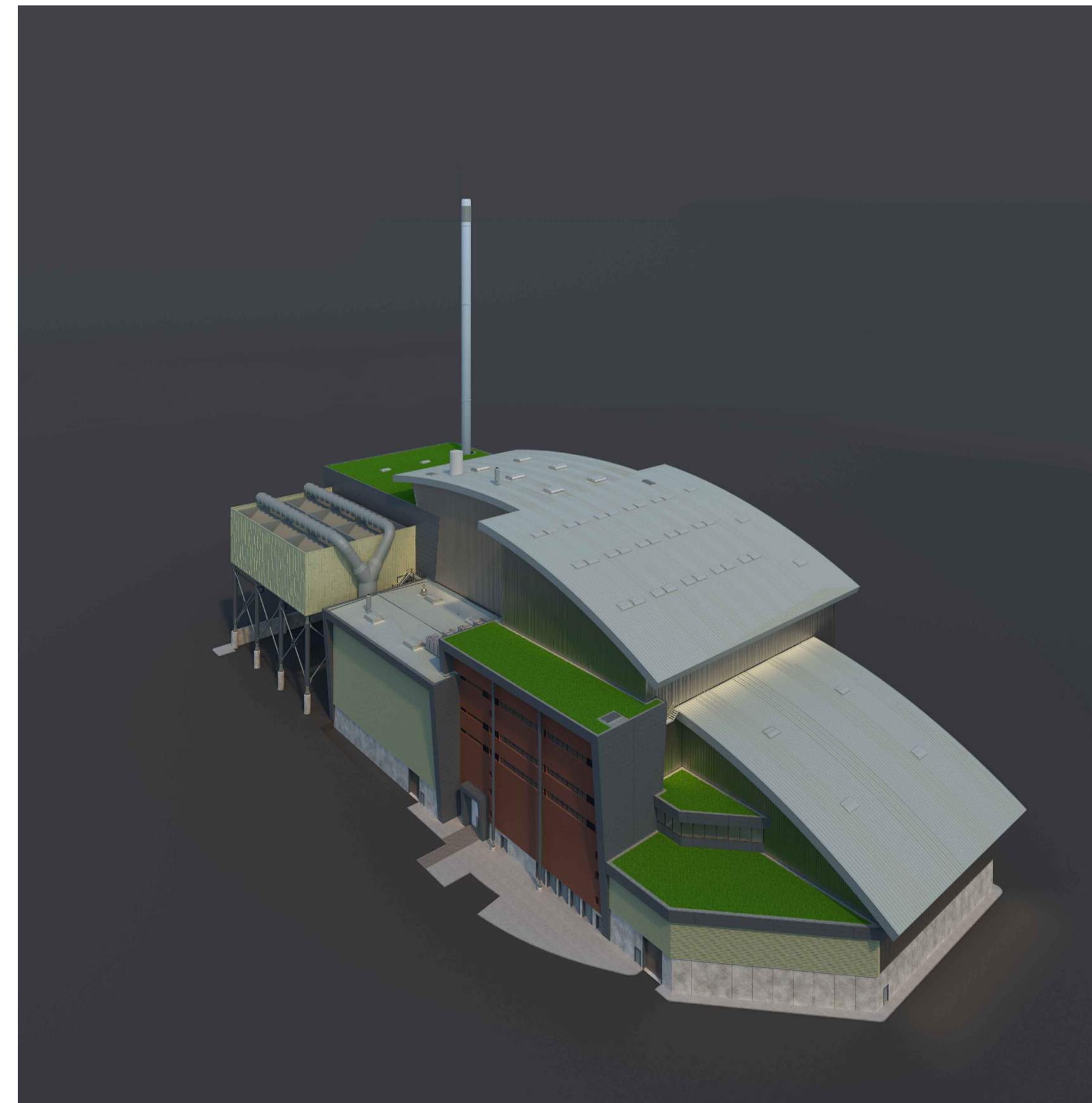


○ AERIAL VIEW FROM THE EAST
NTS



▲ ID10 ▲ ID09 ▲ ID11 ▲ ID17 ▲ ID18

○ AS VIEWED FROM THE WEST
NTS



○ AERIAL VIEW FROM THE WEST
NTS

LEGEND

- ID02: Tipping hall
- ID03: Waste bunker building
 - (ID03a): Tipping bunker
 - (ID03b): Main waste bunker
 - (ID03c): Waste chute platform
 - (ID03d): Crane maintenance area
 - (ID03e): IBA Bunker
 - (ID03f): IBA loading enclosure
 - (ID03g): Back loading hatch
- ID04: Boiler house
- ID05: Air pollution control building
 - (ID05a): APC plant and reactor
 - (ID05b): Bag filter house
 - (ID05c): Induced draft (ID) fan
 - (ID05d): Compressed air station
 - (ID05e): Water treatment plant
 - (ID05f): Urea tank
- ID06: APCr silos
- ID07: Lime & activated carbon silos
- ID08: Chimney & CEMS platform
- ID09: Turbine hall
- ID10: Air cooled condenser (ACC)
- ID11: Water re-cooling system
- ID17: Switchgear building, administration building and control room
- ID18: Workshop & stores

KEY

