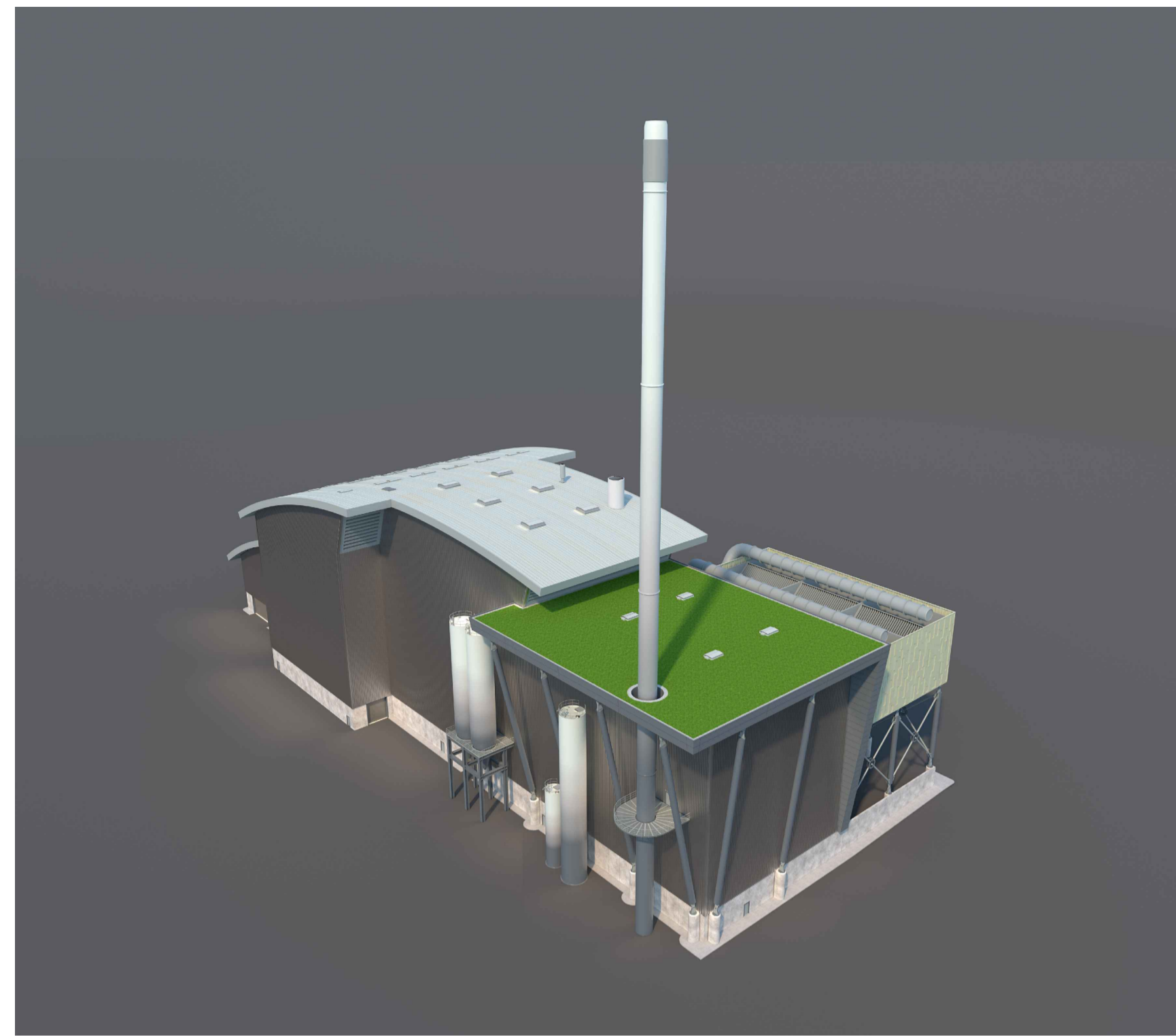
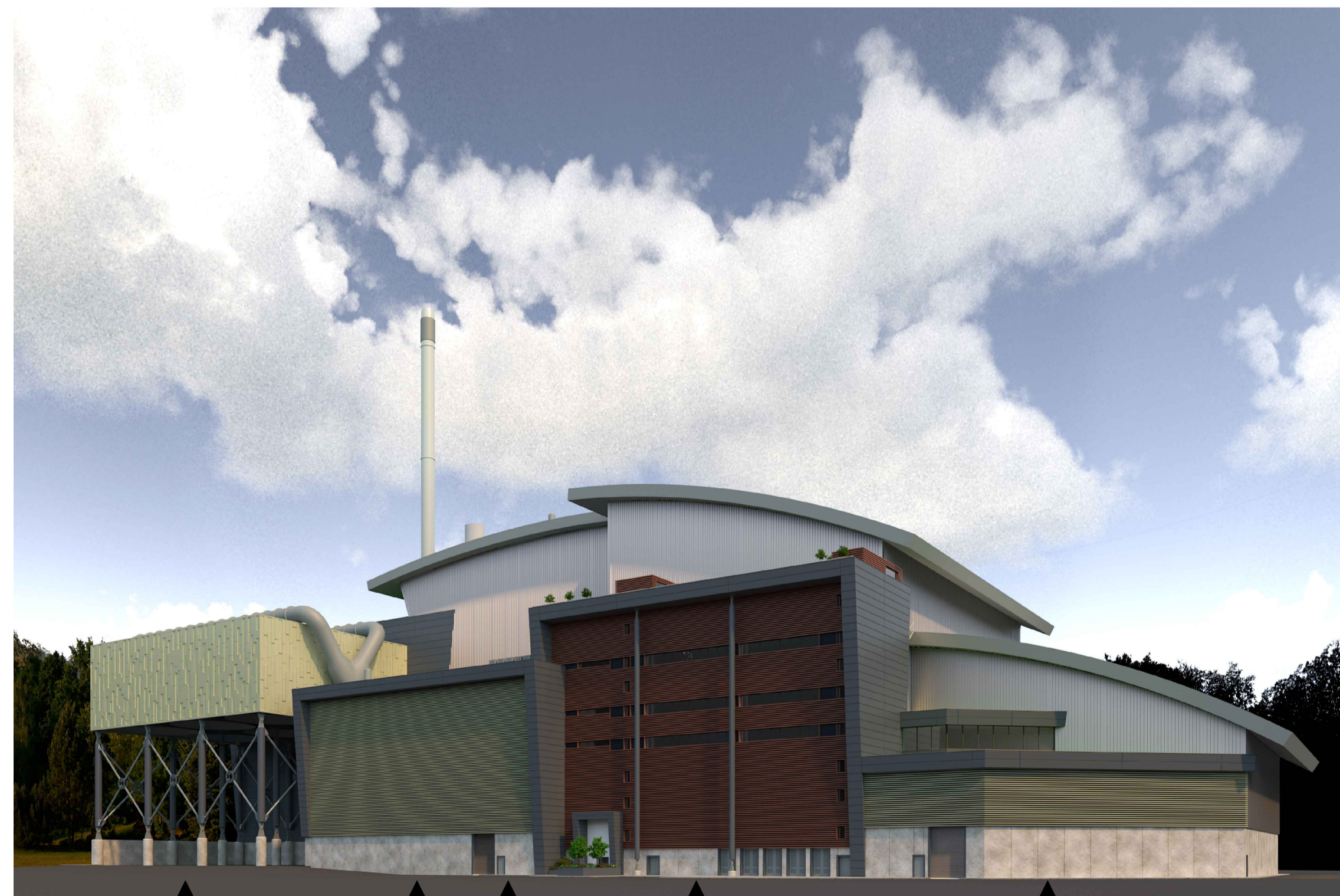


ID02 ID03a-f ID04 ID06 ID07 ID08 ID05 ID10

AS VIEWED FROM THE EAST  
NTS

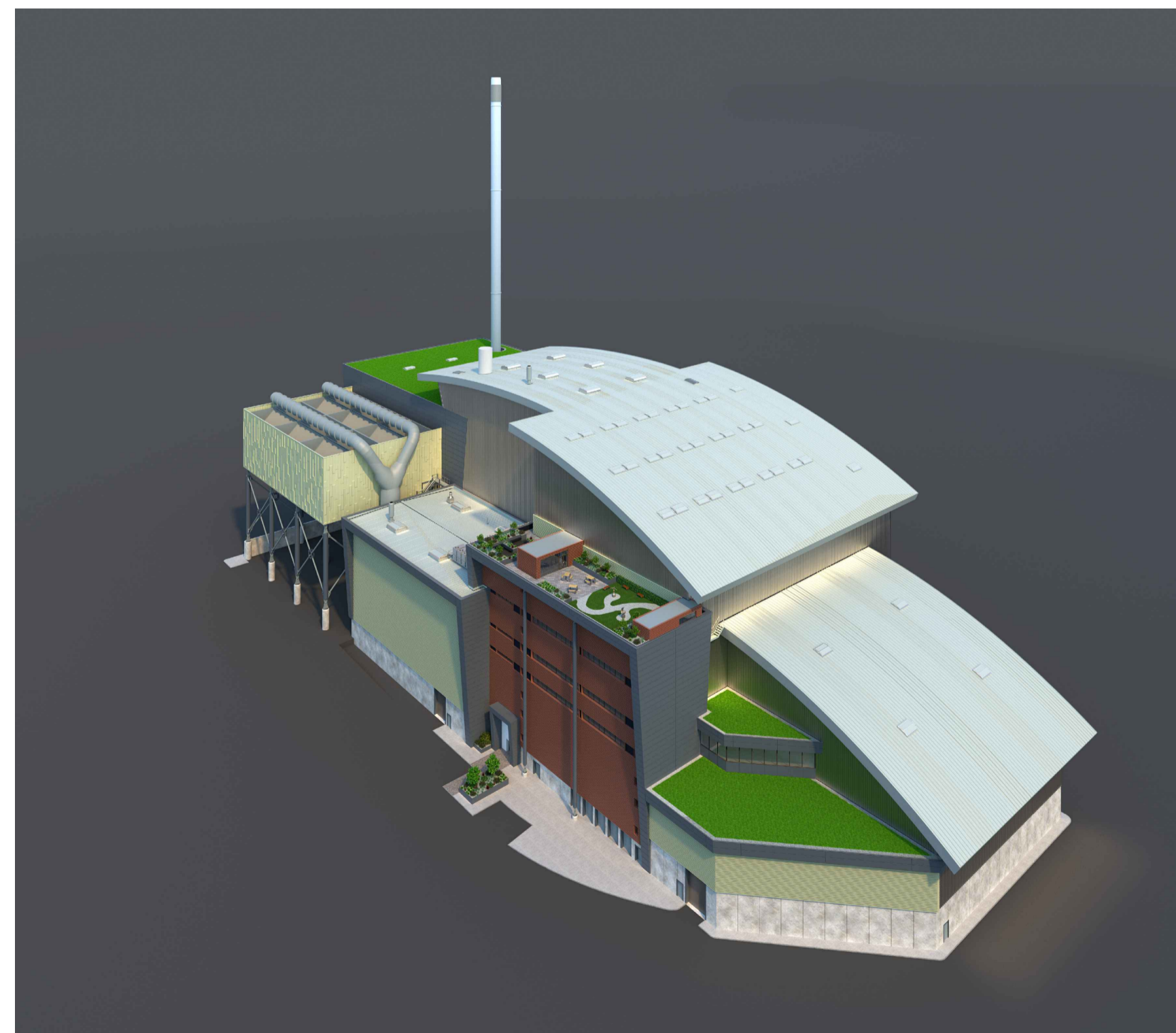


AERIAL VIEW FROM THE EAST  
NTS



ID10 ID09 ID11 ID17 ID18

AS VIEWED FROM THE WEST  
NTS

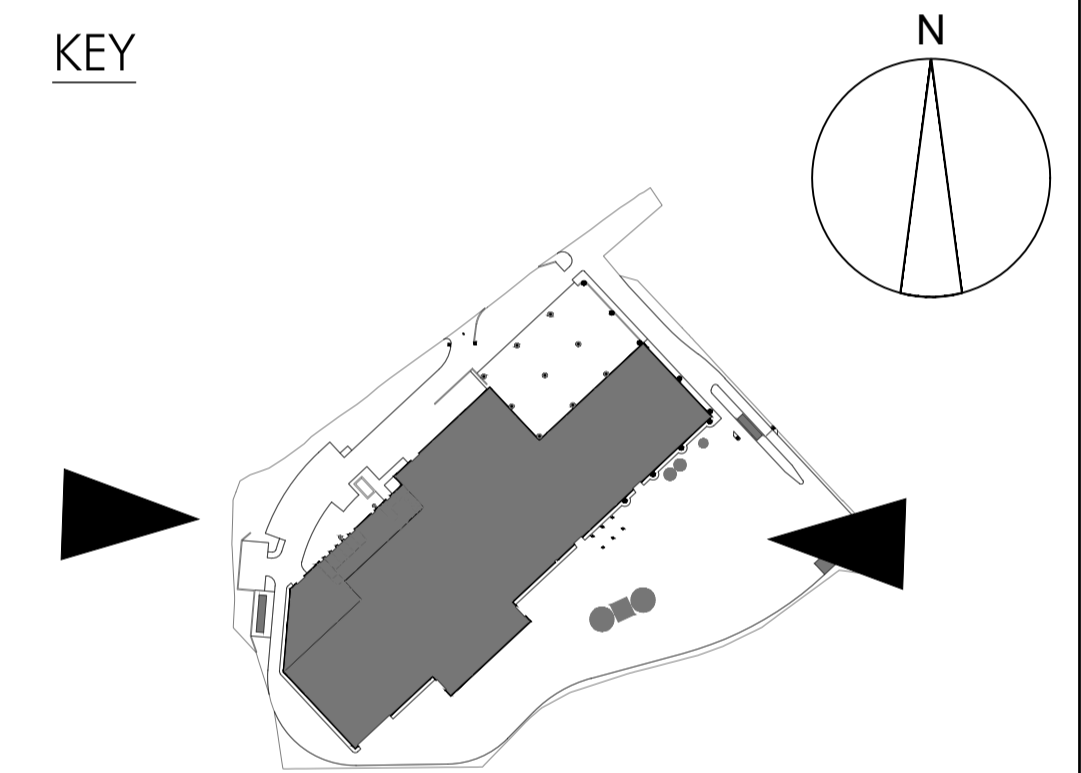


AERIAL VIEW FROM THE WEST  
NTS

LEGEND

- ID02: Tipping hall
- ID03: Waste bunker building
  - (ID03a): Tipping bunker
  - (ID03b): Main waste bunker
  - (ID03c): Waste chute platform
  - (ID03d): Crane maintenance area
  - (ID03e): IBA Bunker
  - (ID03f): IBA loading enclosure
  - (ID03g): Back loading hatch
- ID04: Boiler house
- ID05: Air pollution control building
  - (ID05a): APC plant and reactor
  - (ID05b): Bag filter house
  - (ID05c): Induced draft (ID) fan
  - (ID05d): Compressed air station
  - (ID05e): Water treatment plant
  - (ID05f): Urea tank
- ID06: APCr silos
- ID07: Lime & activated carbon silos
- ID08: Chimney & CEMS platform
- ID09: Turbine hall
- ID10: Air cooled condenser (ACC)
- ID11: Water re-cooling system
- ID17: Switchgear building, administration building and control room
- ID18: Workshop & stores

KEY

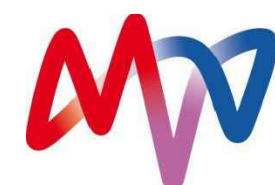


© copyright



Savage +  
Chadwick  
Architects

Armitage House  
Lord Street  
Douglas  
Isle of Man  
IM1 1LE  
t 01624 472050  
f 01624 429237  
www.savagechadwick.com



NOTES  
Figured dimensions are to be used in preference to scaled dimensions. Do not scale from this drawing. Contractors MUST CHECK ALL dimensions and levels on site and any discrepancies must be reported to the Architect. If in doubt consult the Architect.

rev date comment

rev date comment

client

MVV

project

ENERGY FROM WASTE,  
COMBINED HEAT & POWER  
FACILITY, CANFORD.

drawing

COMPUTER GENERATED  
VISUALISATIONS

scale

1:250

paper size

A1

date

23/02/2023

drawn

NAB

project no.

SC1643/PL

drawing no.

12-04

rev.