

Fire prevention plan

Fire prevention plan

Plan version: 1.2
Date of plan: 19.5.2021
Reviewed & updated: 30.01.2024

Site details

Site name: Durley Chine Transfer Station
Site address: Undercliff Drive, Bournemouth, BH2 5JF
Operator name: Bournemouth, Christchurch & Poole Council

Who this plan is for

This plan is for BCP Council Seafront Operations staff, BCP Council Fire Safety officers and contractors working on the site with permission of BCP Council.

Contents

Types of combustible materials	2
Using this fire prevention plan	2
Fire prevention plan contents	3
Manage common causes of fire	4
Prevent self-combustion	6
Prevent fire spreading	7
Quarantine area	7
Detecting fires	8
Suppressing fires	8
Firefighting techniques	8
Water supplies	8
Managing fire water	9
During and after an incident	9
Appendix Fire Hydrant Map and Site Plan	10-11

Types of combustible materials

Combustible waste

Waste removed from the beach through our surf rake process may include the following combustible waste materials:

- Paper & Cardboard
- Plastics
- Rags & Textiles
- Wooden Pallets

The majority of rags and textiles are removed from the beaches by hand prior to the surf rake being used. These items, along with glass are deposited into the four wheeled containers that span the length of the seafront and will not enter the yard.

The remaining materials will be stored temporarily on site within a 14-yard skip.

The waste deposited from the surf rakes into the general waste skip is not separated due to a lack of space for additional containers. In addition, by separating the waste it may extend the storage time of certain materials on site. The contents of the general waste skip is also unlikely to be recycled due to the presence of sand, water and food within the waste.

Persistent organic pollutants

No POPs are present in the waste material we remove from the beach.

Other combustible materials

The only other combustible material are the railway sleepers used to define the waste bay within the site. However, waste is contained within metal skips set 4 metres away from the sleepers. The waste is removed frequently and a number of checks are carried out to ensure that no obvious sources of ignition are placed into the skips.

Using this fire prevention plan

Where the plan is kept and how staff know how to use it

Copies of this plan will be held by BCP Council Seafront Operational staff at the following locations: on site, within the service vehicles used by the Beach Cleansing team, by the Seafront Ranger team at our Sandbanks, Bournemouth and Boscombe beach offices and electronically on the BCP Council internal IT system.

Testing the plan and staff training

The Senior Seafront Ranger will ensure that all operational staff who have access to or manage the geographical area of the seafront where the yard location sits will be trained to understand the plan.

During the initial site induction for all new staff, they will be advised of the processes for dealing with a fire incident. As part of this induction the location of firefighting equipment such as extinguishers and blankets will be highlighted.

Following this training the Senior Seafront Ranger will carry out a training exercise each summer to ensure that the plan and the team are tested.

Fire prevention plan contents

Activities at the site

The site is mainly being used for the disposal of waste material collected mechanically from the beach with our Barber surf rakes and from waste collected by the operational team in smaller vehicles. The waste is deposited into one of the 14-yard general waste skips which are taken away to be processed and replaced with a new empty skip.

When the team undertake their surf raking, they first carry out visual inspection of the beach area to ensure the area is free from glass, rags and textiles and any beach barbeque or fires – all are removed prior to the use of the surf rakes. The glass is placed in our recycling bins for processing (1100 litre bins situated all along the seafront for both our beach cleaners and visitors to use) and the rags and textiles are placed into the general waste bins along the seafront. All barbeque or beach fire material is removed and extinguished if needed.

Once clear of glass, rags and textiles, barbeques or beach fires, the beach cleaners mechanically remove all waste from the area of beach using their tractor operated surf rakes. Once the beach cleaning is complete the operator drives back to the yard at Durley Chine, undertakes a further visual inspection of the surf raked material to ensure no beach barbeques or beach fire material has been picked up (sometimes this material can be buried in the sand) before then emptying the surf rake into the 14-yard skip on site having removed the cover first.

The operator undertakes a final visual inspection of the waste material in the skip before then re-covering the skip.

There is a lockable, double-banded hazardous waste store located in the northeast corner of the site, adjacent to the skip area. Hazardous waste is not stored onsite for any longer than 24 hours.

Site plan

There are two maps included within this document, one to show the location of the nearest fire hydrant and the second map shows the yard and surrounding receptors.

Plan of sensitive receptors near the site

The following receptors are included on the map showing the location of the fire hydrant:

- Protected sites and species -
 - Poole Bay Cliffs a Sites of Special Scientific Interest (SSSI)
 - Solent and Dorset Coast Special Protection Area (SPA)
 - Bournemouth Cliffs Local Wildlife Sites (LWS)
 - Deciduous Woodland & Maritime Cliff and Slope Protected Habitats

- Drain and sewer systems
- Surrounding beach huts, the adjoining Environmental Hub and café

Manage common causes of fire

Arson

The site is a controlled site; locked, fenced and gated. CCTV is located outside the yard and is fixed onto the yard entrance. CCTV is monitored 24 hours a day. Security contractors will go to the site if the alarms are activated. During daytime hours (6am to 10pm) the site is CCTV monitored, accessed by BCP Council Seafront Operations staff and Security contractors.

The Environmental Innovation Hub is also fitted with an alarm and an internal camera system, backed up by an onsite hard drive.

These measures (BCP Council Seafront staff, Security contractors and CCTV) are all in place to provide a 24-hour level of support to manage the security and arson risk on site.

Plant and equipment

The Waste Transfer Area is used for storage of the skips on site. A small buggy vehicle and operational plant will be stored in the garages and lockups.

Electrical faults including damaged or exposed electrical cables

As part of the BCP Council maintenance program any issues would be dealt with when reported to the BCP Council call centre.

Electrics certification

The site will be tested every 5 years as per BS7671 testing schedules. Current Test Certificates are held onsite.

Electrical equipment maintenance arrangements

PAT testing done on an annual basis to all areas.

Discarded smoking materials

Smoking on site policies

There is a strict corporate BCP Council policy of no smoking on site. This is managed by the operational staff, overseen by the Senior Seafront Ranger.

Hot works safe working practices

It is planned that welding will take place in the workshop container. However, a risk assessment, as well as training and certification will be required before this activity can take place. The site documentation will be updated prior to the commencement of any hot works.

Industrial heaters

Use of industrial heaters

This section does not apply – there are no industrial heaters on site.

Hot exhausts and engine parts

Fire watch procedures

There are no additional fire watch procedures. Prior to the use of the surf rakes, all barbeque or beach fire material is removed and extinguished if needed. Additional visual checks are undertaken to ensure that these are not present in the waste tipped into the skips on site.

Ignition sources

There is an electrical switch within the workshop, however this will be subject to an annual inspection to ensure it is safe and faults are reported and rectified.

Batteries

Visual inspections are undertaken of the beach before cleaning, of the material collected by the surf rake and once emptied into the skip an additional visual inspection of the material deposited.

Leaks and spillages of oils and fuels

In any incident of a leak or spillage of oils or fuel from site vehicles we have an Emergency Action Procedure available onsite for staff to ensure that any spillage is dealt with appropriately. This is in addition to daily vehicle visual inspections undertaken on all BCP Council Seafront operated vehicles. Spill kits are kept on site, in yellow wheeled bins, for ease of access.

Build-up of loose combustible waste, dust, and fluff

The yard is an open, uncovered site. Daily inspections are undertaken by the team, in addition to cleaning every time surf rake material is placed into the skip, so the site will be clean of any material other than the waste in the skip.

Reactions between wastes

This section does not apply. Only material removed from the beach by our mechanical surf rakes is placed temporarily in the skips within the yard, so no waste is mixed to introduce a risk through being combined.

Waste acceptance and deposited hot loads

Before material is removed from the beach by the surf rakes a visual inspection is undertaken of the beach area to ensure that all glass, rags and textiles are removed from the beach, and all barbeque or beach fire material is also removed and extinguished as required.

Once a beach area is checked, glass, rags and textiles are removed the remaining waste material is collected using the surf rakes, and before entering the yard area visually checked again for barbeque or beach fire material. Once this material is checked it is deposited into the skip and checked for a third time to ensure there are no barbeque or beach fire materials in the waste mix.

Hot and dry weather

The site is open and mitigation to hot and dry weather risks in terms of fire will be managed through the storage time for waste in the skip being minimised.

The site is also protected partially throughout the day by the shade cast from the surrounding cliffs.

Prevent self-combustion

General self-combustion measures

As above it is an open-air site and waste is stored short term in one 14-yard skip. Waste will be removed from the site for processing on a regular basis. At the peak of summer this will be a daily removal and replacement of skips.

Manage storage time

Method used to record and manage the storage of all waste on site

A diary will be kept by the Seafront Cleansing Team daily to record details of waste within the skips and collection of the waste.

Stock rotation policy

This section does not apply – waste material is stored short term in a skip, which in turn is removed from site / replaced on a frequent basis.

Monitor and control temperature

Reduce the exposed metal content and proportion of ‘fines’

This section does not apply – the waste material does not contain exposed metal content or a proportion of “fines”.

Monitoring temperature

This section does not apply – waste material contained within the skip will be removed from site on a frequent basis minimising the risk in terms of self-combustion.

Controlling temperature

This section does not apply – as above for monitoring temperature.

Dealing with hot weather and heating from sunlight

The site is open and mitigation to hot and dry weather risks in terms of fire will be managed through the storage time for waste in the skip being minimised.

The site is also protected partially throughout the day by the shade cast from the surrounding cliffs.

Waste bale storage

This section does not apply – no waste bale storage occurs within the yard.

Waste stored in containers

Types of containers you are using

We are using three skips on site; a 14-yard skip for general waste collected from the beaches using our surf rake; an 8-yard skip for metal removed from the wider seafront and an 8-yard skip for contaminated sand.

Accessibility of containers

The skips are located within a defined waste bay area to the north of the site. Access to the site, and therefore the bay is from the gated access to the southwest of the site; access to the bay and the skips is from the south.

Moving containers in a fire

This section does not apply – we have no operational plans in place to move any of the skips other than their removal for waste collection purposes. However, this could be undertaken, if safe to do so, utilising one of the beach tractors pulling a skip from the waste bay into the quarantine area.

Prevent fire spreading

Separation distances

The skips within the waste bay, within the yard, are more than 4 metres from the other three sides of the defined waste bay area. To ensure there is a correct separation distance from the waste bay, vegetation from the adjacent cliff face has been removed.

Storage Duration

The skips are covered and once full they are exchanged. Therefore, the pile sizes would not exceed the total volume of the skip. During the busiest parts of the year such as the school summer holidays, a second skip for beach waste is arranged to allow additional capacity and to ensure skips do not overflow.

Skips are checked daily and exchanged when full. During the summer skips may be exchanged daily.

Fire walls construction standards

This section does not apply – the site is open air, and the separation distance is over 4 metres in all directions.

The skips are located within a designated area which is bordered within a bay surrounded by wooden sleepers. The skips are metal which allows a potential fire to be contained within it.

Storing waste in bays

This section does not apply – the waste in the yard is stored within skips, which will contain general waste, metal and an additional 8-yard skip may be used for contaminated sand. The use of separation distances is the main control mitigation in place within the yard.

Quarantine area

Quarantine area location and size

As acknowledged on the attached map we have identified an area to the southeast of the site which will be used as a quarantine area if required. The area is separated from the waste bay and other elements of the yard by a minimum of 6 metres. The area is sufficient to allow one of the containers to be moved to it if needed.

How to use the quarantine area if there is a fire

This area will be used to move containers into if required. This will be undertaken, if safe to do so, utilising one of the beach tractors pulling a skip from the waste bay into the quarantine area.

Procedure to remove material stored temporarily if there is a fire

This section does not apply – no additional material will be stored on site outside of the three skips.

Detecting fires

Detection systems in use

There is a heat detector in the workshop area.

Certification for the systems

The heat detection system is checked on an annual basis as part of the fire service contract.

Suppressing fires

Suppression systems in use

This section does not apply as there are no fire suppression systems in place within the workshop. The majority of the site is an open yard.

Certification for the systems

As above – this section does not apply.

Firefighting techniques

Active firefighting

The site is open, with full access to the waste bay within which the skips are located. This location and full gated access from the southwest side of the yard will allow the fire service unhindered access to the site in the case of a fire. An accessible fire box is secured on the external perimeter of the site. This contains any keys required for access, maps showing site features and the nearest fire hydrant and a list of contacts.

With permission from the EA the BCP Council Seafront Operations team also have easy access to sand which could be used to smother the skip.

Water supplies

Available water supply

The yard has a water supply (see site map) and the nearest fire hydrant to the yard is located 225 metres away to the east of the entrance of the site. The fire hydrant is on a 4" main and is regularly inspected on a risk assessed one yearly cycle. There is also a mains water tap and hose within the yard.

The fire hydrant pressure varies during the day and seasonally. The water companies continuously manage the public water network to ensure that their regulatory service minimum standards of 9 litres/minute at 15m head are maintained at all times throughout the day.

Show the calculation for your required water supply

The waste is stored on site within a 14-yard (12.8 cubic metre) skip so the total water required would be 12.8 cubic metres (minus the volume of waste in the skip at the time).

Managing fire water

Containing the run-off from fire water

The yard is designed (location of waste bays / skips, slope of the site, use of sleeping policeman and drain in the southwest of the site) to allow drainage of surface run off to enter the drainage system. Water for extinguishing a fire in the general waste skip would therefore be handled by the existing physical mitigations in place on site.

During and after an incident

Dealing with issues during a fire

If a fire incident occurs on site, the response would be managed by our BCP Council Seafront Operations team liaising with the Fire Service. Beach Cleansing operations would be stopped and redirected to an alternative location in liaison with BCP Council colleagues at Southcote Road or Hatch Pond. Other operations adjacent to the site and stakeholders would be managed by the team with the Fire Service.

Notifying residents and businesses

If there is a fire, coordination of the operational response and communication to relevant stakeholders will be managed through our Seafront out of hours response. This will ensure that Seafront Operational staff are involved as required 24 hours a day in the eventuality of a fire.

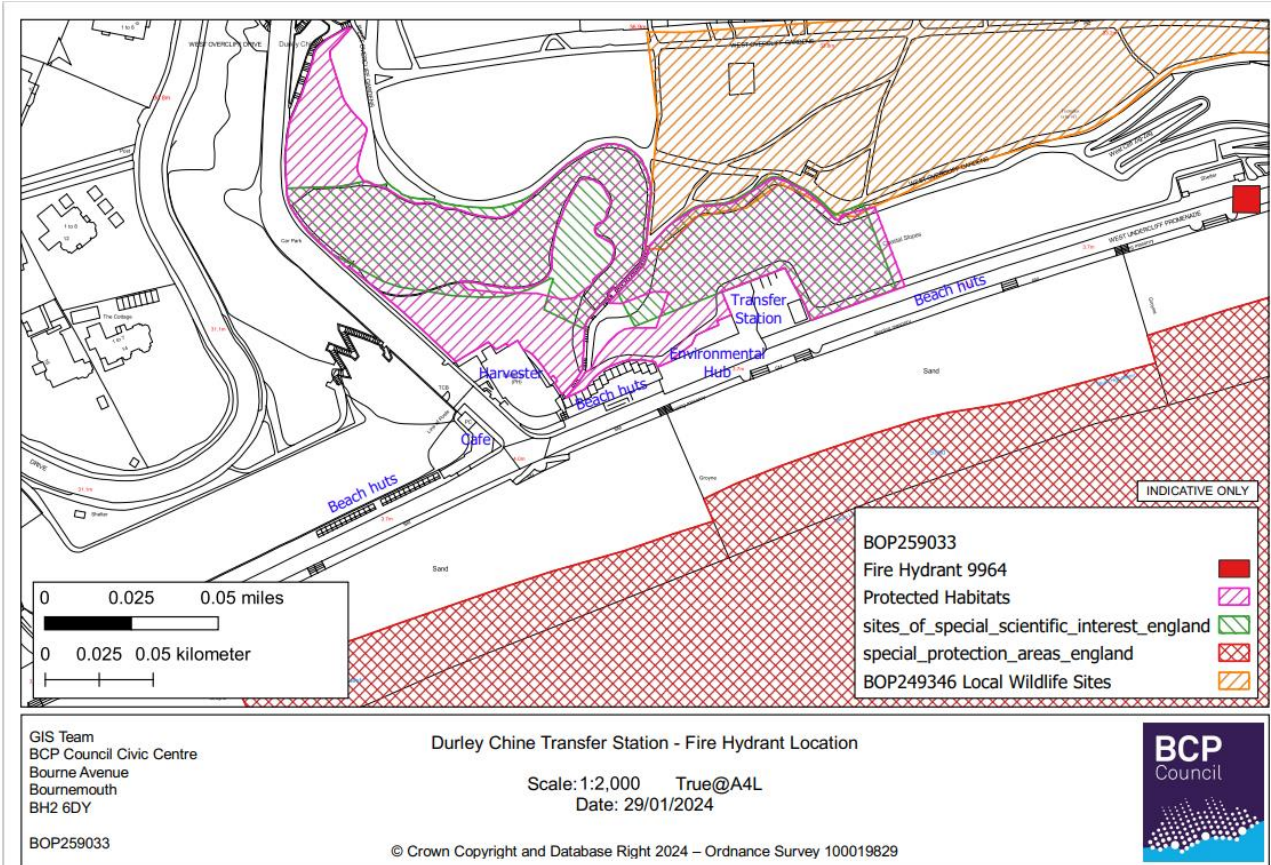
Clearing and decontamination after a fire

After an incident, affected skips would be removed from site in coordination with our skip provider, with all additional waste material removed from site by the BCP Council Beach Cleansing team using additional skips.

Making the site operational after a fire

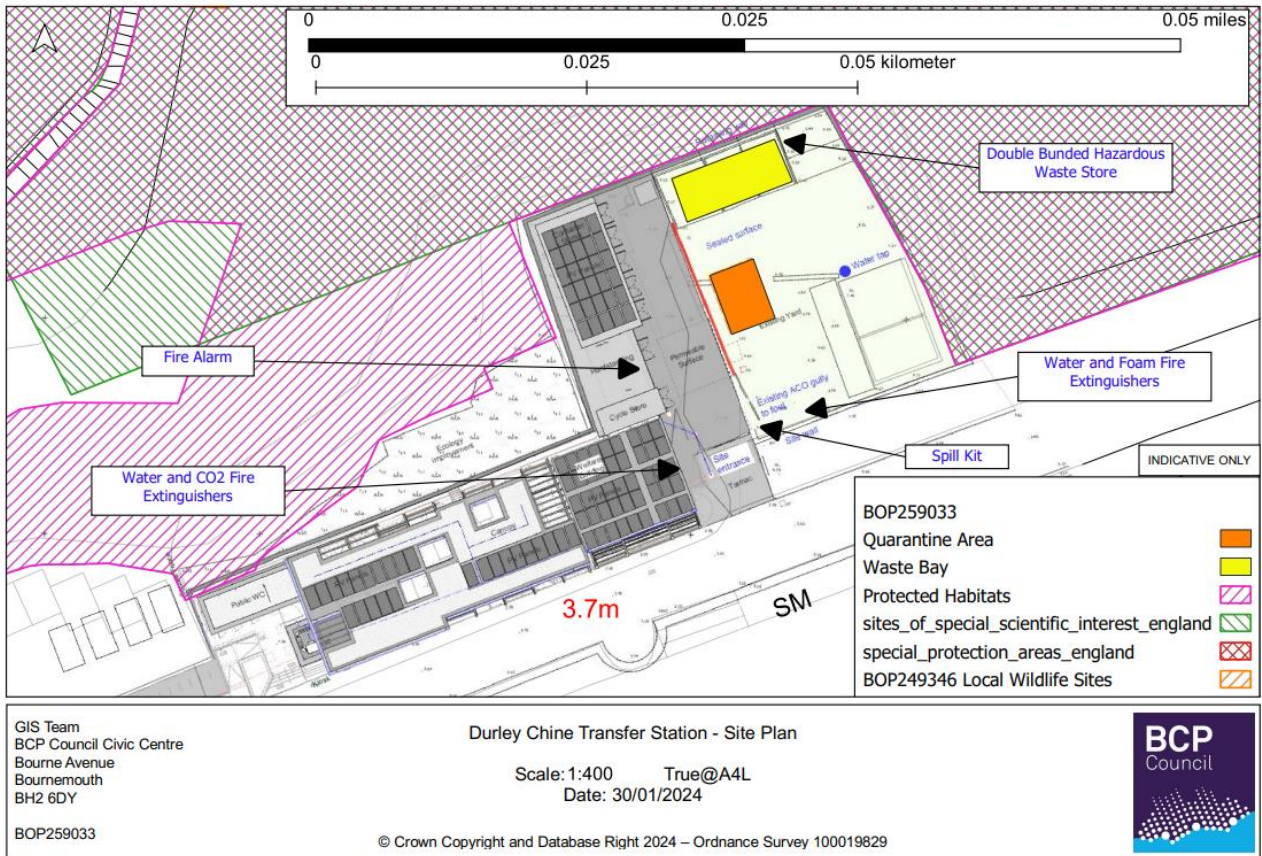
As above the site would require appropriate cleaning and if required decontamination, ensuring that the facilities on site (waste bays, sleeping policemen, surface drainage) are all in place and operational. All other aspects of the site will be checked and repaired as required before any operations are restarted on site.

Appendix – Fire Hydrant map and Site plan



Map 1 – location of Fire Hydrant

Fire prevention plan



Map 2 – Site plan