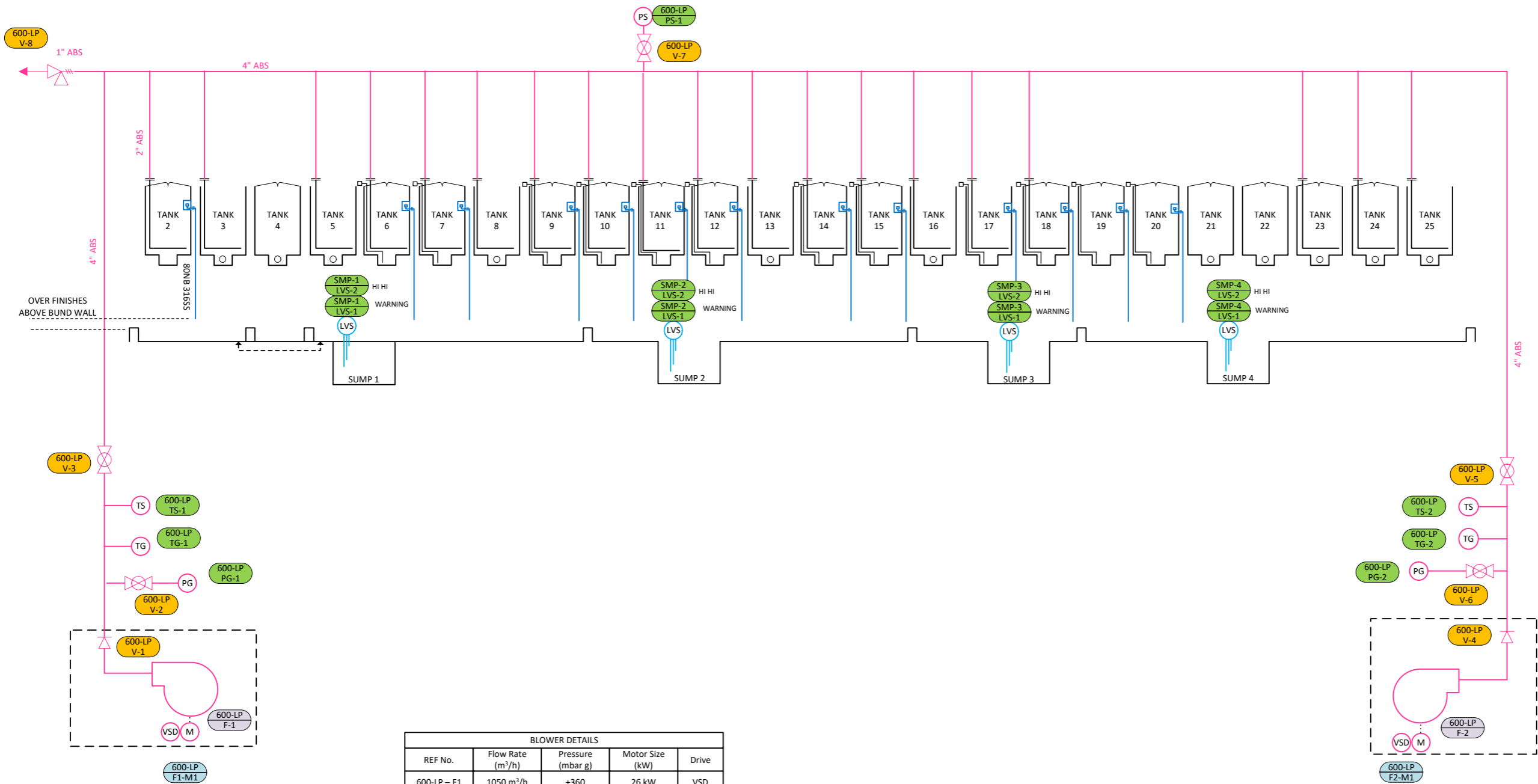


LP & BUND & CHEMICAL OVER FLOWS



BLOWER DETAILS				
REF No.	Flow Rate (m³/h)	Pressure (mbar g)	Motor Size (kW)	Drive
600-LP - F1	1050 m³/h	+360	26 kW	VSD

BLOWER DETAILS				
REF No.	Flow Rate (m³/h)	Pressure (mbar g)	Motor Size (kW)	Drive
600-LP - F2	1050 m³/h	+360	26 kW	VSD

G	PRODUCTION ISSUE	JULY 23
F	PRODUCTION ISSUE	JUNE 23
E	PRODUCTION ISSUE	MAY 2023
D	PRODUCTION ISSUE	APR 2023
NO.	REVISIONS	DATE

This drawing and its designs are part of the intellectual property of GEORGE KOCH SONS EUROPE LTD. And may not be copied or used without the written permission of GEORGE KOCH SONS EUROPE LTD. This drawing, its designs and any information hereon may not be disclosed to any third party without the written permission of GEORGE KOCH SONS EUROPE LTD.

George Koch Sons Europe Ltd
City House, Davidson Road,
Lichfield, Staffordshire. WS14 9DZ
Tel: 01543 444001
Email: office@kocheurope.com

JOB	J00620		
FOR	AGITATION AIR, CHEMICAL TANK OVERFLOWS & BUND		
	Bae ANODISING PLANT		
Drawn by	...	Scale	...
Checked by	...	Date	22.06.2022
Drawn No.	J00620 - 32 - 032		A3