

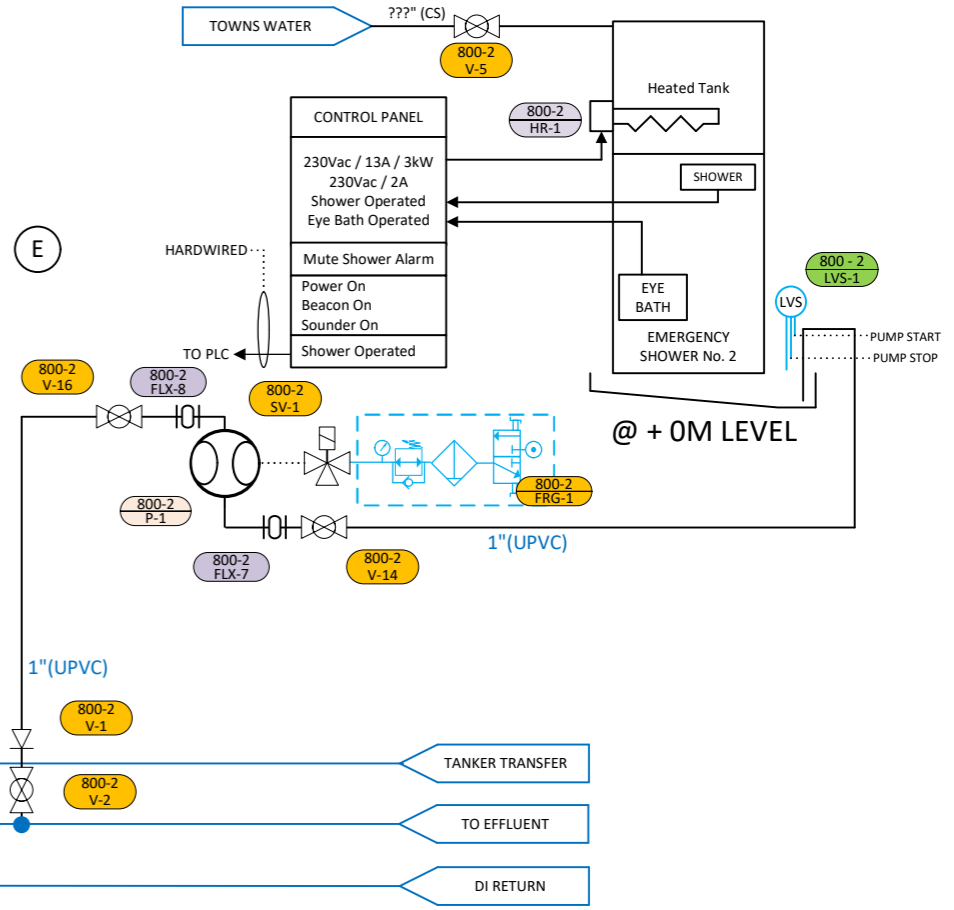
- 210 PX-1 OPEN PX
- 210 PX-2 CLOSE PX
- 210 M-1 VSD M

- 210 PX-5 RHS PX
- 210 PX-6 LHS PX

Padlocked Shared Tanker Transfer Key

10 – TI ETCH/PICKLE
 Tank Material CPVC
 Temperature 15-26 °C/ Ambient
 Working Volume 15714L
 Startup Load 30kW
 Running Load 5.4kW
 LP. Air Agitation 0.033m³/s
 Chemistry: HF ACID AND NITRIC ACID

- 210 HW V-1
- 210 HW STR-1
- 210 HW FMD-1
- 210 HW V-4
- 210 HW V-3
- 210 HW V-2
- 210 HW CV-1
- 210 HW V-5
- 210 HW V-6
- 210 HW AVV-1
- 210 HW V-6



HEAT EXCHANGER DETAILS				
REF No.	Capacity (kW) Total	Temp Inlet / Outlet (°C)	Flow Rate (kg/s) Total	Connection
210 – HX 1	30	82 / 71	1.04	1" Union
Stainless Steel 304 Fluoropolymer Coated				

G	PRODUCTION ISSUE	JULY 23
F	PRODUCTION ISSUE	JUNE 23
E	PRODUCTION ISSUE	MAY 2023
D	PRODUCTION ISSUE	APR 2023
No.	REVISIONS	DATE

This drawing and its designs are part of the intellectual property of GEORGE KOCH SONS EUROPE LTD. And may not be copied or used without the written permission of GEORGE KOCH SONS EUROPE LTD. This drawing, its designs and any information hereon may not be disclosed to any third party without the written permission of GEORGE KOCH SONS EUROPE LTD.

George Koch Sons Europe Ltd
 City House, Davidson Road,
 Lichfield, Staffordshire. WS14 9DZ
 Tel: 01543 444001
 Email: office@kocoeurope.com

JOB	J00620		
FOR	TANK 10: TI ETCH / PICKLE BAE ANODISING PLANT		
Drawn by	DSH	Scale	...
Checked by	...	Date	22.06.2022
Drawn No.	J00620 – 32 – 010		A3