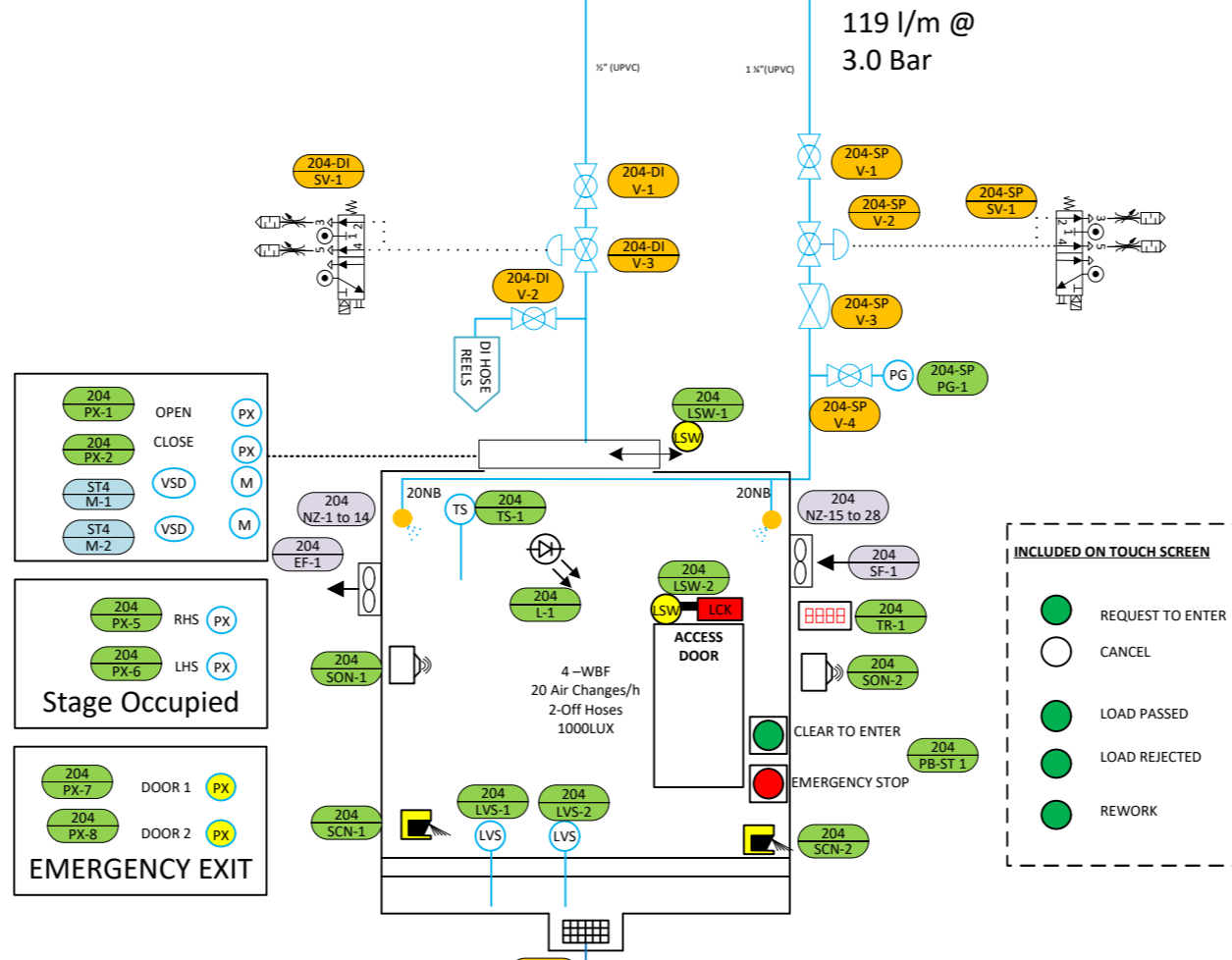
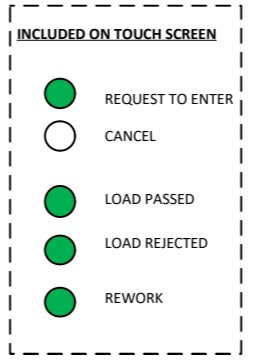


204 TR-2

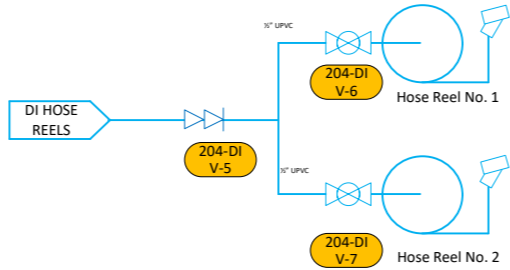
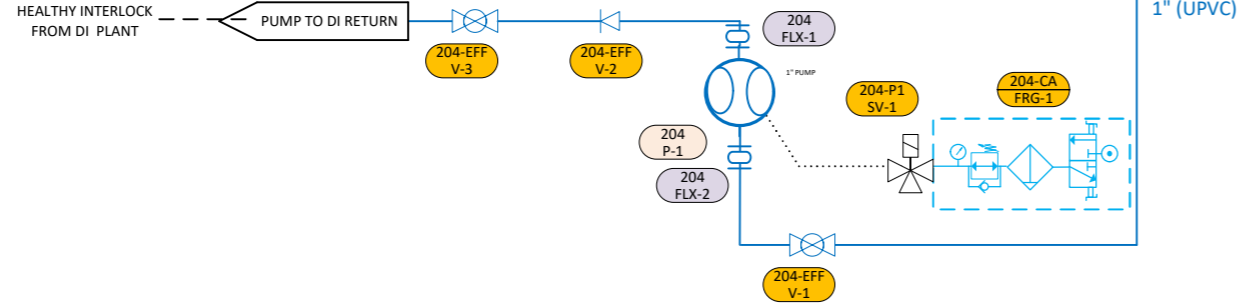
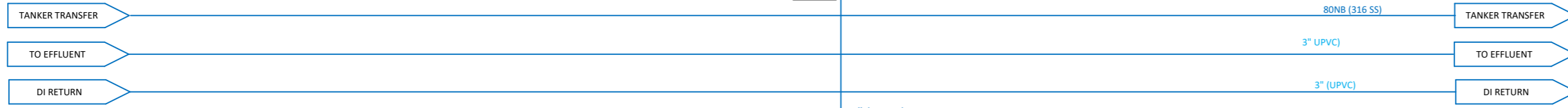
LOCATED IN LOAD/ UNLOAD AREA



Single sliding lid
2 x motors
Step motor control
415VAC 3Ph



- 204 PX-1 OPEN PX
 - 204 PX-2 CLOSE PX
 - ST4 M-1 VSD M
 - ST4 M-2 VSD M
- Stage Occupied**
- 204 PX-5 RHS PX
 - 204 PX-6 LHS PX
- EMERGENCY EXIT**
- 204 PX-7 DOOR 1 PX
 - 204 PX-8 DOOR 2 PX



SPRAY NOZZLE DETAILS

REF No.	No. Nozzles per ring	Flow Rate per NZL (l/m)	Pressure (Bar)	Type
ST4 - SP - NZ	14 Nz / Ring x 2 Rings	8.5	3.0	Vee Jet, SS, 1/4" thread PNR: DDU22294B1

Stage 4 ONLY
NOTE
Spray Goods every 10mins for 15 seconds. If Booth is not in use and Flight Bar is present

G	PRODUCTION ISSUE	JULY 23
F	PRODUCTION ISSUE	JUNE 23
E	PRODUCTION ISSUE	MAY 2023
D	PRODUCTION ISSUE	APR 2023
No.	REVISIONS	DATE

This drawing and its designs are part of the intellectual property of GEORGE KOCH SONS EUROPE LTD. And may not be copied or used without the written permission of GEORGE KOCH SONS EUROPE LTD. This drawing, its designs and any information hereon may not be disclosed to any third party without the written permission of GEORGE KOCH SONS EUROPE LTD.



JOB	J00620		
	WATER BREAK		
FOR	BAe ANODISING PLANT		
Drawn by	DSH	Scale	...
Checked by	...	Date	22.06.2022
Drawn No.	J00620 - 32 - 004		A3