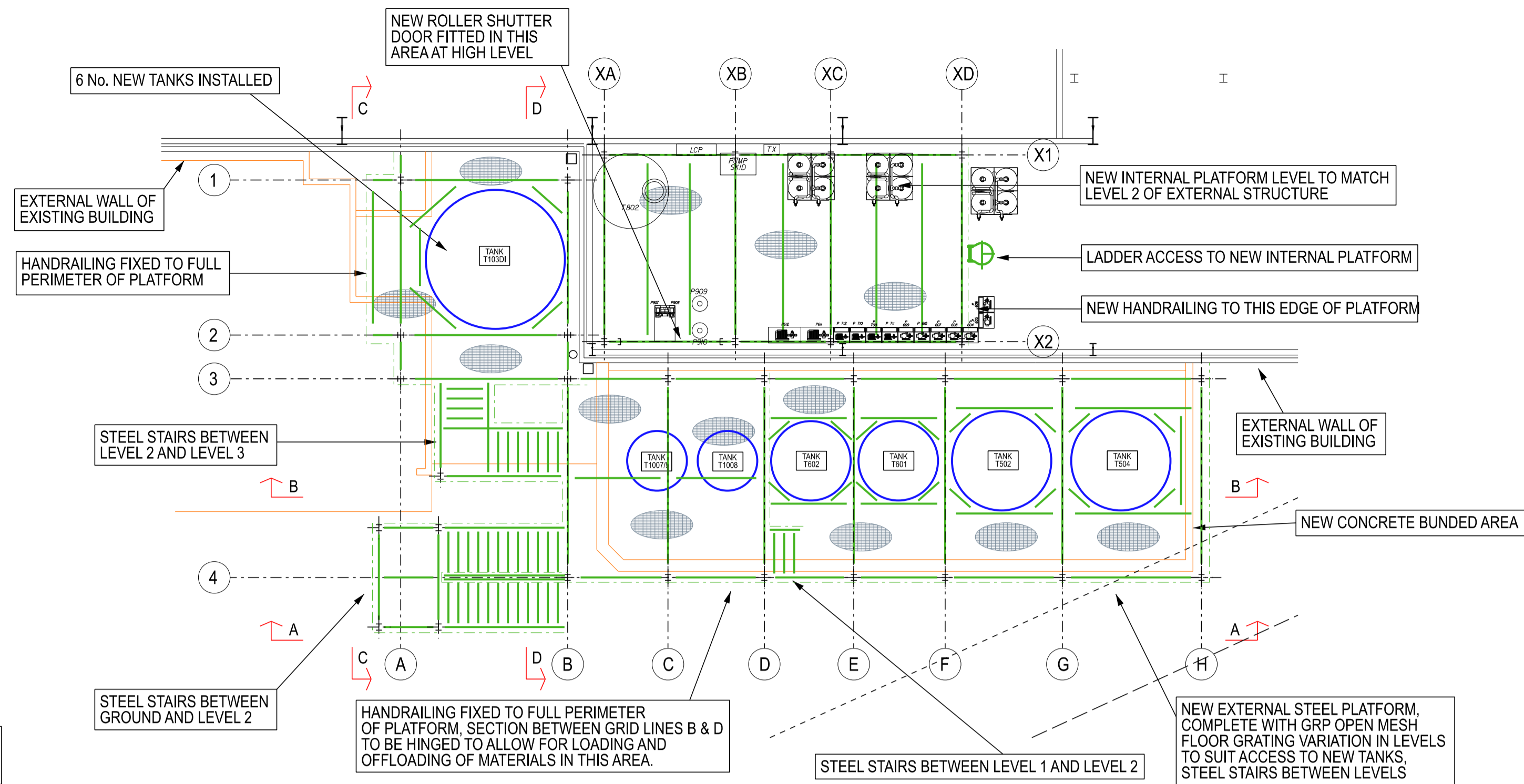
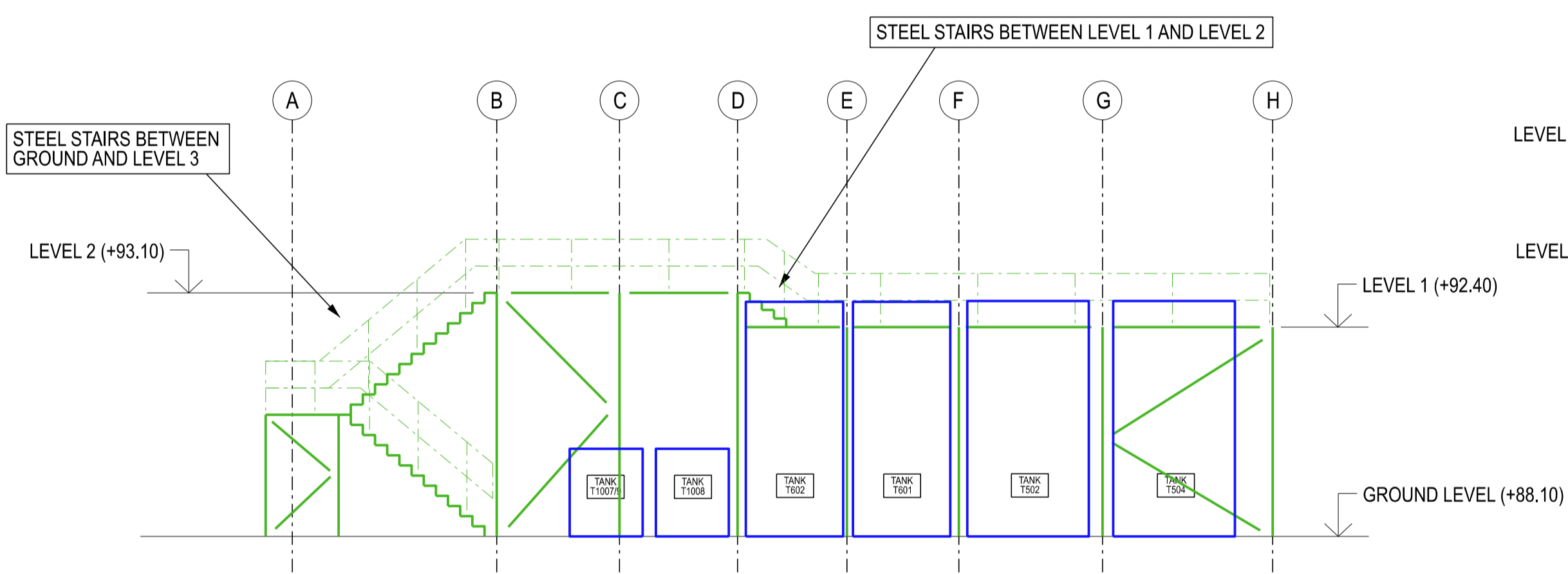


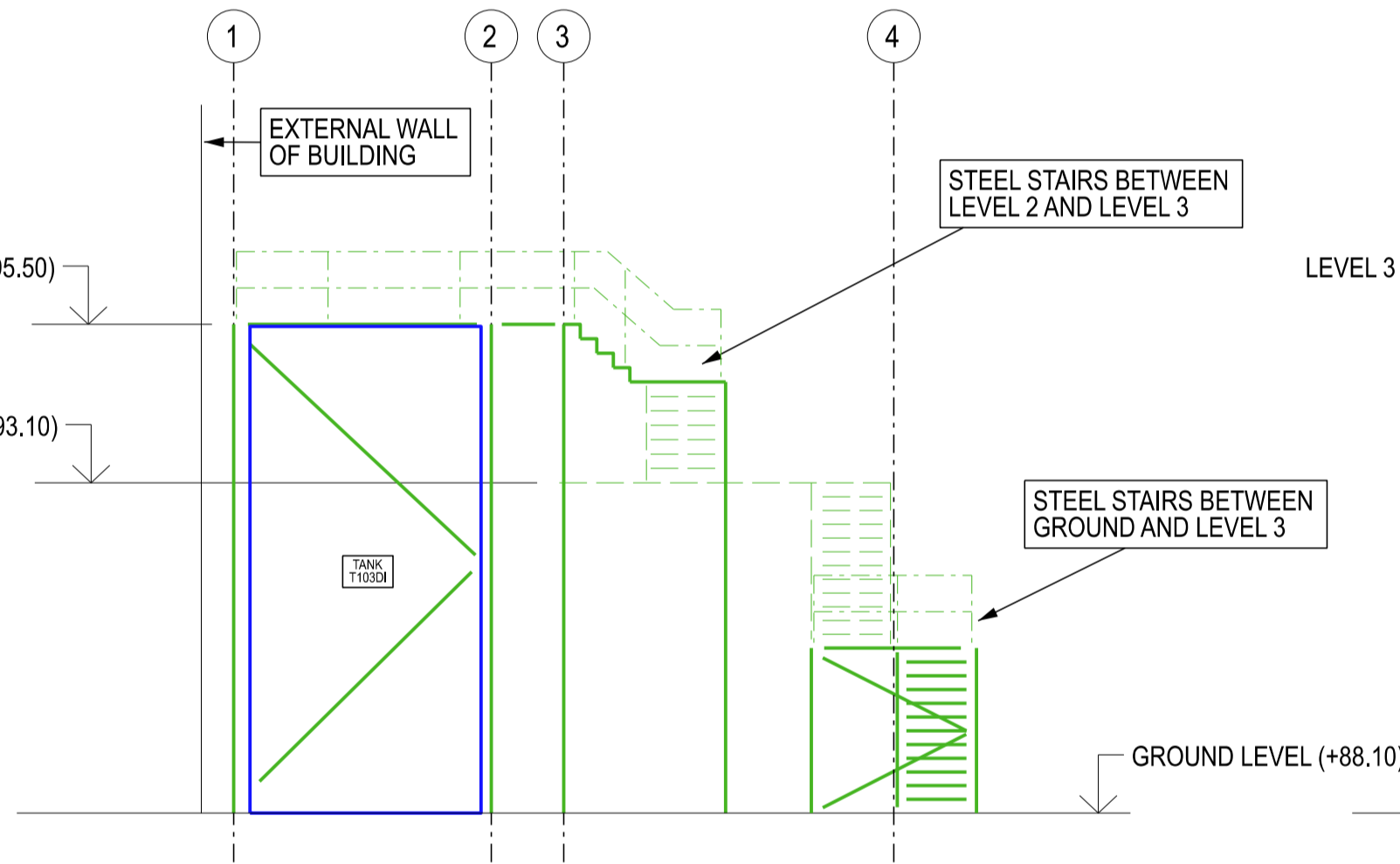
EXISTING LAYOUT



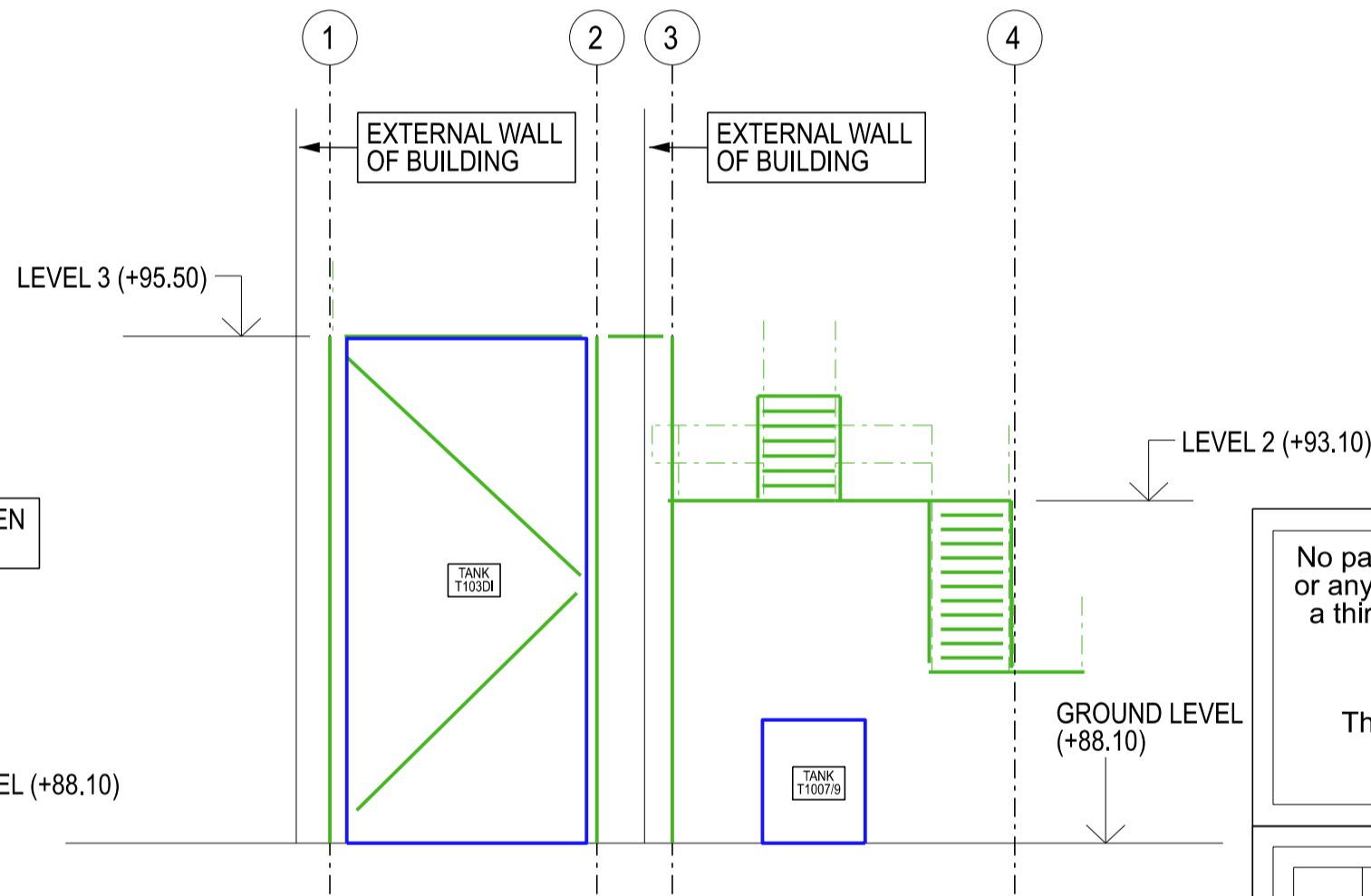
PROPOSED LAYOUT



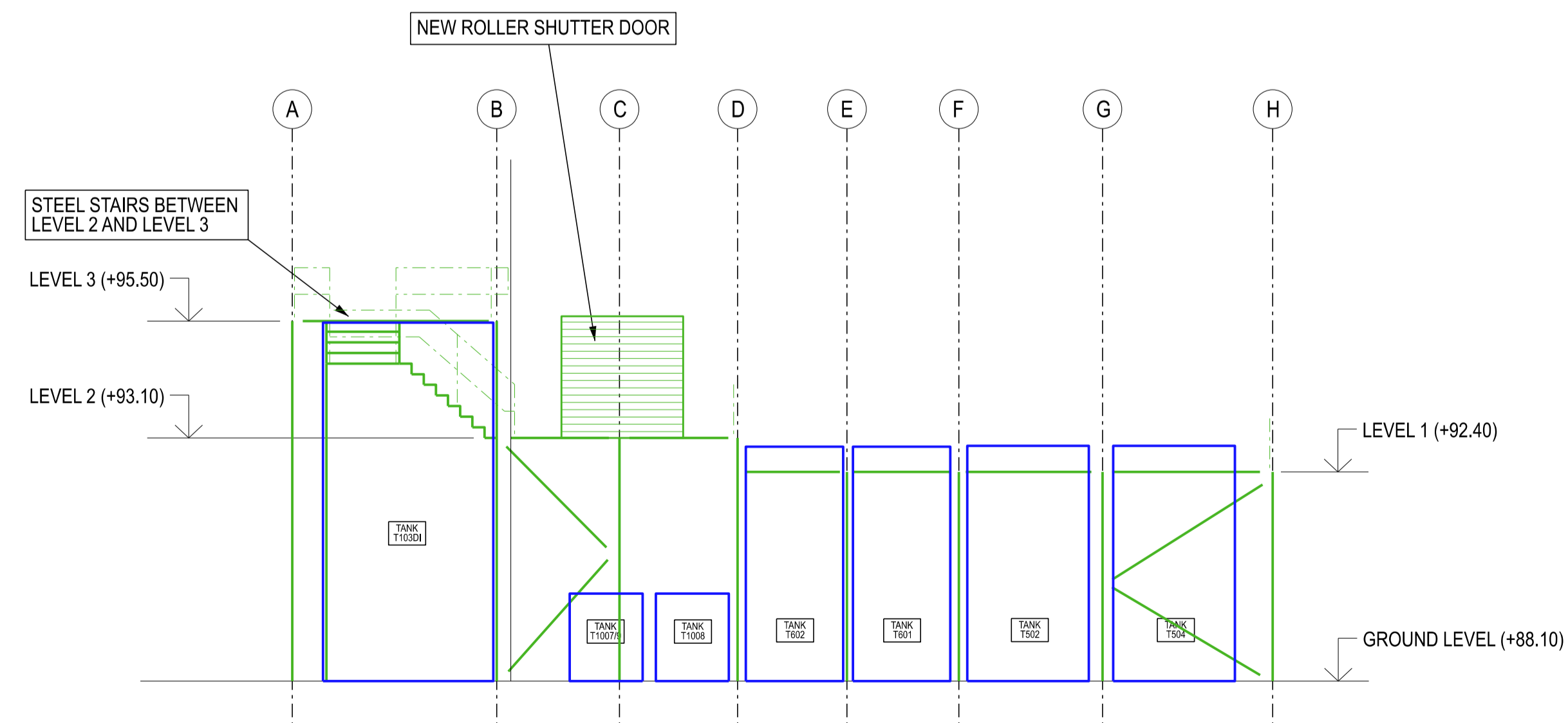
SECTION A-A



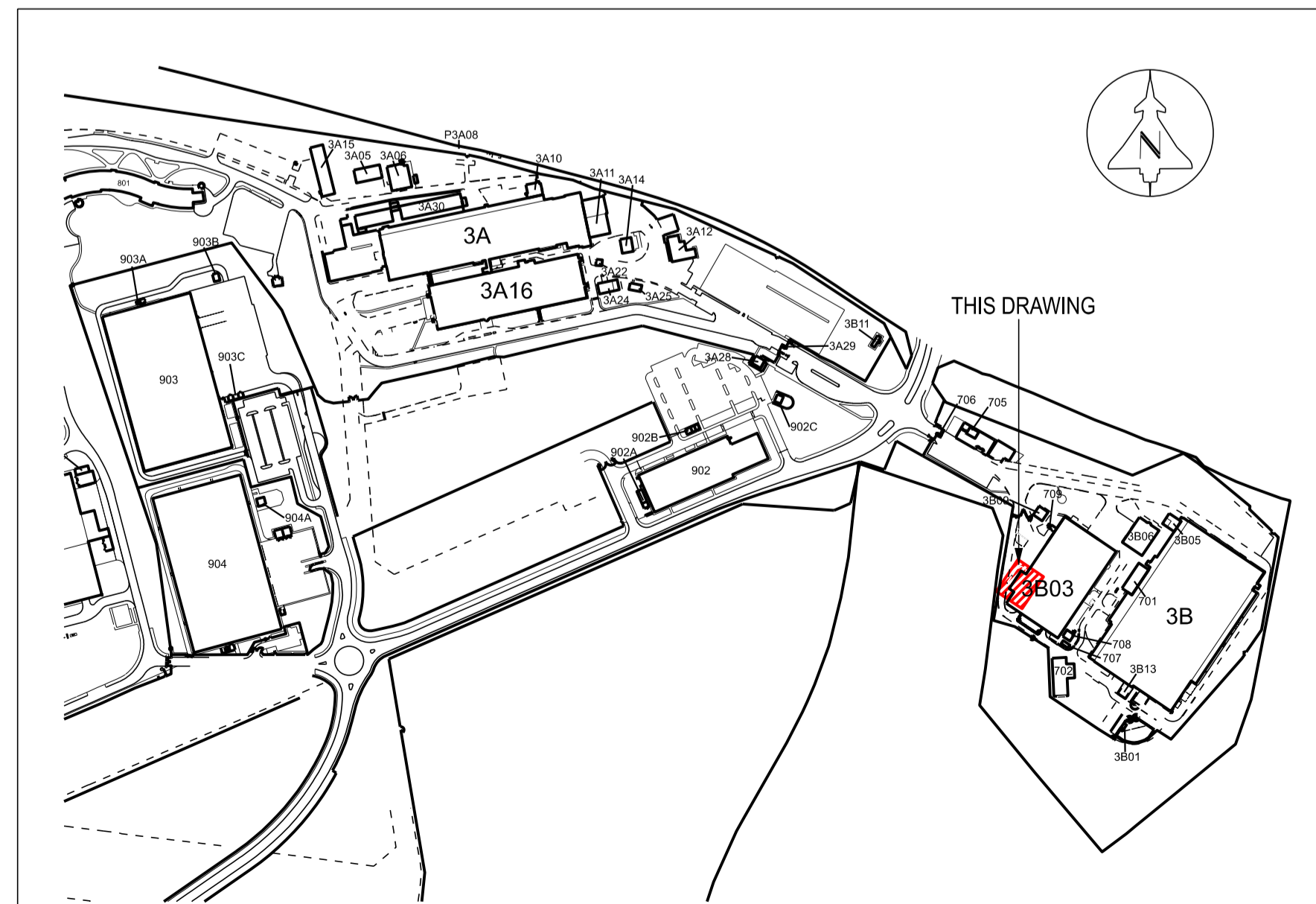
SECTION C-C



SECTION D-D



SECTION B-B



SITE LOCATION PLAN

GENERAL NOTES

1. THIS DRAWING IS INTENDED TO BE PART OF THE BAE SYSTEMS ENGINEERING SPECIFICATION.
2. IT IS INTENDED TO TRANSFER BAE SYSTEMS' BASIC REQUIREMENTS TO THE CONTRACTOR SO AS TO ENABLE THE CONTRACTOR TO FORMULATE THE FULL DESIGN.
3. ALL WORK, INCLUDING FURTHER DESIGN, IS THE RESPONSIBILITY OF THE CONTRACTOR.
4. ALL WORK, INCLUDING DESIGN, IS TO BE CARRIED OUT TO THE RELEVANT STANDARD, I.E. - B.S. - CODE OF PRACTICE, LOCAL BYELAW, BAE SYSTEMS SPECIFICATION.
5. WHILE BAE ENDEAVOUR TO PROVIDE ACCURATE RECORDS OF SERVICES, IT IS THE CONTRACTORS' RESPONSIBILITY TO VERIFY LOCATIONS OF ALL SERVICES IN ORDER TO COMPLETE THE FINAL DESIGN.

No part of this drawing may be copied or reproduced or any information contained on this drawing given to a third party without the prior written permission of:  
**Facilities Management - Air**  
**BAE Systems (Operations) Ltd.**  
 This drawing contains information, as held on the Facilities Management CAD System at the date of printing only... 01/04/2022

Rev.	Description	Date
A	FOR APPROVAL	01-04-22

Code	Suitability Description
Status	Purpose of Issue

**Facilities Management - Air**  
 BAE SYSTEMS  
 SAMLESBURY AERODROME  
 BLACKBURN  
 LANCASHIRE  
 BB2 7LF  
 Tel: 03300 476166



Samlesbury Site  
 Project  
 21S0096 - S3B03 CTF DI WATER & EFFLUENT UPGRADE

Title  
 S3B03 CTF DI WATER & EFFLUENT UPGRADE  
 NEW STEELWORK STRUCTURE

Drawn By	Checked By	Date
M BUNKER		31/03/22

Scale	Project/Sheet Number
1:100 @ A1	21S0096 / 003

Drawing Number	Rev.
21S0096DG_006	A