


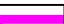
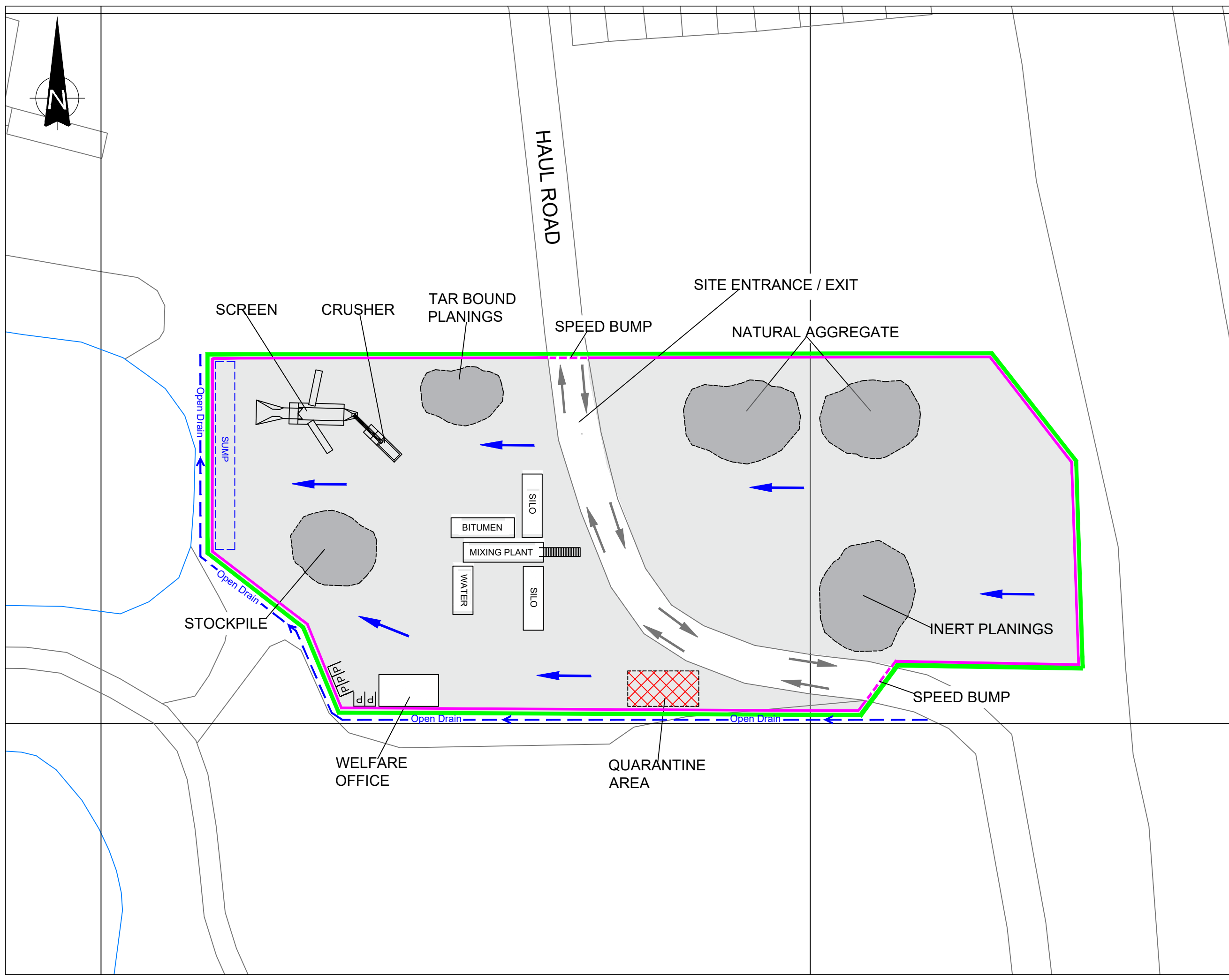


THIS INFORMATION IS CONFIDENTIAL AND THE PROPERTY OF SIRIUS. IT IS RELEASED ON CONDITION THAT NONE OF THE INFORMATION SHALL BE DISCLOSED TO ANY THIRD PARTY OR REPRODUCED IN WHOLE OR PART WITHOUT THE PRIOR CONSENT IN WRITING OF SIRIUS.

- NOTES**
-  PROPOSED SITE BOUNDARY
  -  ENGINEERED SURFACE
  -  GENERAL SURFACE FALLS
  -  SURFACE WATER BUND



REV	DESCRIPTION	DATE	BY

CLIENT



**TARMAC**  
A CRH COMPANY



**sirius Environmental**

Office Suite 2, The Beacon Centre for Enterprise, Dafin, Llanelli, SA14 8LQ, 01554 789 544

**JOB TITLE**  
WEEFORD QUARRY ASPHALT RECYCLING FACILITY ENVIRONMENTAL PERMIT APPLICATION

**DRAWING TITLE**  
INDICATIVE OPERATIONAL LAYOUT PLAN

DRAWN	DATE	APPROVED	DATE
K.J	18/05/2023	D.T	18/05/2023

SCALE	SHEET	DRAWING NUMBER	REVISION
1:500	A3L	TA1061/10/02	0