

# ENVIRONMENTAL RISK ASSESSMENT

Mucklow Hill, Halesowen, B62 8DL

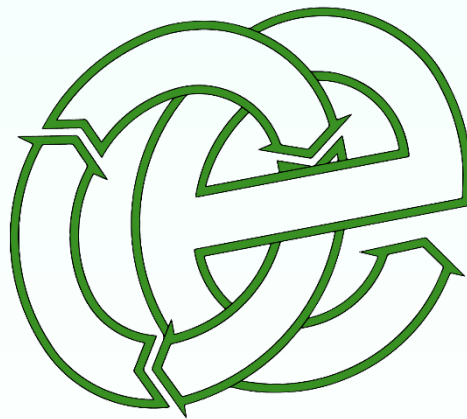
Halesowen Skip Hire Ltd

Version:	1.1	Date:	14 January 2026		
Doc. Ref:	3490-MUC-ERA	Author(s):	EG	Checked:	--
Client No:	3490	Job No:	001		

Oaktree Environmental Ltd, Lime House, 2 Road Two, Winsford, Cheshire, CW7 3QZ  
Tel: 01606 558833 | E-Mail: [sales@oaktree-environmental.co.uk](mailto:sales@oaktree-environmental.co.uk) | Web: [www.oaktree-environmental.co.uk](http://www.oaktree-environmental.co.uk)

Registered in the UK | Company Number: 4850754

© Oaktree Environmental Ltd – The unauthorised copying or reproduction of this document (or part thereof) is strictly prohibited



## Oaktree Environmental

Waste, Planning & Environmental Consultants



### Document History:

Version	Issue date	Author	Checked	Description
1.0	24/10/2025	EG	--	Document issue
1.1	14/01/2026	EG	--	Additional information regarding the risk to adjacent protected habitats

## Contents

Document History: .....	i
Contents .....	ii
List of Tables .....	iii
List of Appendices: .....	iv
1 Introduction .....	1
1.1 General.....	1
2 Site Location and Receptors .....	3
2.1 Site Location .....	3
2.2 Sensitive Receptors .....	3
3 Environmental Risk Assessment Model .....	5
3.1 Fundamental considerations .....	5
3.2 Pathway .....	5
3.3 Consequences .....	6
3.4 Effects of consequences .....	6
3.5 Risk estimation and evaluation (probability/frequency of occurrence of hazard) .....	6
3.6 Risk assessment outcome (combination of probability & consequence) .....	7
4 Risk Assessment Table .....	9

List of Tables

Table 2.1 - Sensitive Receptors..... 4

## List of Appendices:

Appendix I - Risk Assessment Table

Appendix II - Drawings

Drawing No. 3490-MUC-03 – Site Layout & Fire Plan

Drawing No. 3490-MUC-04 – Receptor Plan

# 1 Introduction

## 1.1 General

- 1.1.1 Oaktree Environmental Ltd have been instructed by Halesowen Skip Hire Ltd (the operator) to prepare this Environmental Risk Assessment (ERA) to support an Environmental Permit (EP) application at Mucklow Hill, Halesowen, B62 8DL.
- 1.1.2 The EP application this ERA relates to proposes the authorisation of a non-hazardous household, commercial and industrial (HCI) waste transfer station with treatment facility. An annual throughput of 25,000 tonnes is proposed.
- 1.1.3 Treatment activities proposed to be undertaken at the site include:
- a) Sorting (with loading shovel/360° excavator or by hand).
  - b) Manual separation (by picking line).
  - c) Mechanical separation (including magnets and density separator).
  - d) Screening (by using appropriate mechanical screen / trommel).
  - e) Baling (by using appropriate mechanical baling plant).
  - f) Storage (prior to removal).
- 1.1.4 Further details on the proposed operations are outlined in the Non-Technical Summary, document reference 3490-MUC-NTS.
- 1.1.5 The site will also be operated in accordance with a fully comprehensive Environmental Management System (EMS). All site staff should be provided with a copy of this ERA and be aware of where it is located on site.
- 1.1.6 All environmental risks identified in this document should be acted upon accordingly by site management to ensure all environmental risks can be appropriately managed/controlled.

- 1.1.7 This document primarily considers environmental risks associated with proposed operations listed in section 1.1.2 – 1.1.3 and does not aim to provide detailed Health and Safety risk assessments as required separately through the necessary legislation.

## **2      Site Location and Receptors**

### **2.1      Site Location**

- 2.1      The site is located at Mucklow Hill, Halesowen, B62 8DL, National Grid Reference SO 97464 84047 and is accessed via Mucklow Hill.
- 2.1.2      Land use surrounding the site is predominantly industrial. The site is situated on the outskirts of an industrial estate with various other industrial & trading estates surrounding the site.
- 2.1.3      A full list of receptors within 1km of the site can be found in Table 2.1 overleaf. Some receptors included in this list may not be sensitive to all potential emissions / hazardous from the site i.e. surface water is not considered sensitive to odour. When considering each hazard in the risk assessment table specific receptors that could have the potential to be affected have been outlined.

### **2.2      Sensitive Receptors**

- 2.2.1      Sensitive receptors within 1km of the site are illustrated on Drawing No. 3490-MUC-04 – Receptor Plan included in Appendix II.
- 2.2.2      Table 2.1 overleaf shows the approximate distance and orientation of sensitive receptors from the site.



Table 2.1 - Sensitive Receptors

Receptor	Direction from Site	Approx distance from the site boundary to the receptor boundary (m)
<b>Commercial / Industrial</b>		
Mucklow Hill Interiors	South	0
Mantech UK	West	20
D X F Manufacturing Limited	West	55
Ultraline Factory	Northwest	65
Mucklow Hill Trading Estate	North	90
M T Scaffolding	West	95
Forge Trading Estate	West	215
Shenstone Trading Estate	Southwest	230
<b>Residential Dwellings</b>		
Sylvan Green	Northeast	215
Ladypool Close	South	360
Dudley Road	West	460
<b>Care homes (residential)</b>		
Shenstone Court Care Home	West	335
<b>Schools</b>		
Tenterfields Nursery	Southwest	550
Tenterfields Primary Academy	Southwest	625
Manor Way Primary Academy	South	695
The Earls High School	West	735
Halesowen College	West	775
Windsor Academy Trust	Southwest	820
Halesowen C of E Primary School	Southwest	940
<b>Watercourses / Surface Water Features</b>		
Dudley Canal No.2	East	10
Breaches Pool	South	150
River Stour	West	410
<b>Infrastructure (major roads and transport links)</b>		
Mucklow Hill (A458)	west	0
<b>Ecological Sites</b>		
The Leasowes (SSSI)	East	0
Bromsgrove Road Cutting Tenterfields (SSSI)	Southwest	490
<b>Recreational</b>		
Halesowen Golf Club	East	220

## 3 Environmental Risk Assessment Model

### 3.1 Fundamental considerations

- 3.1.1 Source/Hazard: A property or situation that in particular circumstances could lead to harm.
- 3.1.2 Consequences: The adverse effects or harm as the result of realising a hazard which causes the quality of human health or the environment to be impaired in the short or long term.
- 3.1.3 Risk: A combination of the probability of occurrence of a defined hazard and the magnitude of the consequences of the occurrence.

### 3.2 Pathway

- 3.2.1 Important in the assessment of a particular risk(s) and to inform the subsequent management of the risk(s) is the identification of the pathway(s) through which the risk may affect the identified receptor(s). The following are examples of pathways:

- Air (windblown dust etc.).
- Ground (leaching of contaminants into underlying aquifers).
- Water (hydrocarbon run off into surface waters).
- Direct contact / exposure.

### 3.3 Consequences

- 3.3.1 The following Table highlights the consequences of the hazard(s) identified and the abbreviations for each as used in the Risk Assessment Table in Section 3:

Abbreviation	Consequences
A	MINOR INJURY
B	MAJOR INJURY
C	DEATH
D	AIR POLLUTION
E	WATER POLLUTION
F	POLLUTION OF LAND

### 3.4 Effects of consequences

- 3.4.1 In order to quantify the level of risk and identify the appropriate management procedures, the potential effects must be considered, as outlined in the table below:

Abbreviation	Effect of Consequences	Management Required?
S	SEVERE	In all cases
Mo	MODERATE	In most cases
Mi	MILD	Occasionally
N	NEGLIGIBLE	No

*Note: "Management" is the action required to reduce the risk of a hazard causing a problem on site. Contingency measures are procedures which are in place to reduce the consequences of a hazard.*

### 3.5 Risk estimation and evaluation (probability/frequency of occurrence of hazard)

- 3.5.1 The following table allows the likelihood of an occurrence of an identified risk to be assessed:

Score	Probability	Evaluation
1	Very likely	Could occur during any working day
2	Likely	Could occur regularly
3	Possible	Event possible
4	Unlikely	Event very unlikely

### 3.6 Risk assessment outcome (combination of probability & consequence)

3.6.1 The following table shows the resultant risk of an identified hazard or potential situation. This uses the hierarchy of both probability and consequence to assess the level of risk. The level of risk determines what level of management would be required in order to reduce the risk of occurrence and/or scale.

		Consequence			
		S	Mo	Mi	N
Probability	1	High	High	Medium	Low
	2	High	Medium	Low	Negligible
	3	Medium	Low	Negligible	N/A
	4	Low	Negligible	N/A	N/A

3.6.2 Where the risk assessment outcome is high, first-level management of the risk is essential, i.e. removal of hazard, implementation of major infrastructure/structural design measures to contain the risk/hazard and company policy changes to incorporate the management of the risk. All risk management measures must be supplemented with detailed induction training, spot training and tool-box talks to ensure all site staff and users are made fully aware of the risk/hazard, all potential consequences and necessary management and contingency procedures.

3.6.3 Where the risk assessment outcome is medium, the management of the risk should be tackled by management or delegates. If removal of the hazard is not possible, management will normally be met through implementing minor structural design measures or by imposing procedures for the prevention of occurrences which will be conveyed to all site staff through the appropriate training, including any contingency measures/procedures.

3.6.4 Where the risk assessment outcome is low, the management of the risk can be done wholly through appropriate training to site staff including any contingency measures/procedures.

- 3.6.5 Where the risk assessment outcome is negligible, site staff should be made aware of the possibility of an occurrence, and contingency measures should be readily available to all staff should they be required.

## 4 Risk Assessment Table

- 4.1 The following pages contain the site-specific risk assessment for the site with appropriate remedial actions, recommendations and comments included for each identified hazard, potential contaminant, or situation.
- 4.2 The table also contains references to the appropriate section(s) of the site's EMS for additional management procedures.
- 4.3 As discussed in Section 3.6 above, all situations which identify a risk from Low – High should be incorporated into the staff/visitor training schedule, where appropriate and acted on as required.

SEE TABLES OVERLEAF

# Appendix I

## Risk Assessment Table

Hazard / Potential Contaminant or Situation	Source(s)	Pathway	Receptor(s)	Consequences	Effect	Probability	Assessment Outcome	Remedial Action/ Recommendations/ Comments
Dust / particulates	<p>Formation of dust on site surfaces during dry and windy weather conditions.</p> <p>Processing of waste via screening (trommel)</p> <p>Loading of waste into treatment plant.</p> <p>Waste dropping from conveyors into stockpiles</p> <p>Prolonged periods of dry/warm weather or conditions where winds reach 4+ on the Beaufort Wind Scale</p> <p>Particulate emissions from the exhaust of vehicles / plant and other non-road going machinery on site.</p> <p>External storage of potentially dusty waste / material including, soil, stones etc</p>	Air	<p>Local human population, including users of surrounding commercial / industrial sites, other neighbouring businesses, residential dwellings, surface water features, flora and fauna.</p> <p>See Table 2.1</p>	<p>Harm to human health – respiratory irritation and illness</p> <p>A, B, D, E, F</p>	Mi – Mo	3	Negligible	<p>The operator will implement the following mitigation and storage requirements to minimise the risk of dust arising from site operations:</p> <ul style="list-style-type: none"> <li>• All waste treatment operations are undertaken within a fully enclosed building.</li> <li>• Strict waste acceptance procedures are implemented to ensure that loads comprising of mainly dust, powders or loose fibres are not accepted on site.</li> <li>• All vehicles delivering and exporting waste will be sheeted.</li> <li>• Drop heights will be minimised as far as reasonably practicable.</li> <li>• Hoses, mains water and a 10,000-litre rainwater harvesting tank will be available on site and utilised to dampen waste storage areas and the site surface.</li> <li>• Potentially dusty waste that is externally stockpiles (oversize concrete, hardcore, stones and fines etc) will be dampened regularly in dry and windy conditions. This reduces the amount of dust that could be suspended and be emitted beyond the permit boundary.</li> <li>• Potentially dusty waste will be stored with a 1m freeboard from the height of the bay wall to reduce the risk of the top of the pile becoming windblown beyond the bay.</li> <li>• Hoses can be utilised to wash the wheels of vehicles leaving the site to remove any mud, dust or debris and minimise the risk of mud being tracked out onto the highway and surrounding roads.</li> <li>• Operatives will continuously monitor for dust emissions when on site and will report any issues to the site manager.</li> <li>• The requirements of a Dust &amp; Emissions Management Plan (DEMP) are implemented on site. The DEMP outlines all mitigation measures to be implemented on site and what to do in the event of dust extending beyond the permit boundary.</li> <li>• See the DEMP document ref. 3490-MUC-DEMP for further information.</li> </ul>



Hazard / Potential Contaminant or Situation	Source(s)	Pathway	Receptor(s)	Consequences	Effect	Probability	Assessment Outcome	Remedial Action/ Recommendations/ Comments
Odour	<p>Cracks in the impermeable concrete pad leading to trapped waste.</p> <p>Dry and hot weather conditions exceeding three days.</p> <p>Prevailing wind towards receptor locations transporting odour.</p> <p>Staff negligence leading to odour release from unauthorised waste.</p>	Air transport then inhalation	<p>Local human population, including users of surrounding commercial / industrial sites, other neighbouring businesses, residential dwellings.</p> <p>See Table 2.1</p>	A, D	Mi to Mo	3	Negligible	<p>The operator will implement the following to minimise the risk of odour from the site:</p> <ul style="list-style-type: none"> <li>• Strict waste acceptance procedures are implemented to ensure that no malodorous waste is accepted.</li> <li>• No food waste is proposed to be accepted under the EP.</li> <li>• Any wastes discovered to be malodorous following acceptance / deposit into the waste reception area will be quarantined and removed from site as soon as practicable.</li> <li>• All waste will the potential to be malodorous i.e. green waste, plasterboard etc is stored either in the waste transfer building or within an open fronted covered structure, significantly reducing the potential for rainwater to come into contact with the waste an exacerbate odour production.</li> <li>• If any waste being stored on site begins to give rise to odour that is detectable off site will be removed as soon as practicable.</li> <li>• Good housekeeping measures are actively maintained on site to reduce the risk of odour, this includes regular cleaning of the site.</li> <li>• Storage bays and areas will undergo a deep clean every 12 weeks to remove any residual waste and prevent odour development (areas will not undergo cleaning at the same time).</li> <li>• All waste treatment and storage is undertaken on an impermeable pad, the condition of the site surface will be checked on a weekly basis to ensure there are no cracks that could lead to trapped waste and odour developing.</li> <li>• Site operatives will be sufficiently trained and undergo continuous training to identify odorous wastes or non-conforming waste types that could give rise to odour.</li> <li>• It is considered with proper housekeeping, leak prevention, and handling protocols in place, odour nuisance to nearby receptors is highly unlikely, and thus does not present a significant environmental or amenity risk.</li> <li>• The requirements of an Odour Management Plan (OMP) are implemented on site. The OMP outlines all mitigation measures to be implemented and what to do in the event of odour detection beyond the permit boundary.</li> <li>• See the OMP document ref. 3490-MUC-OMP for further information.</li> </ul>

Hazard / Potential Contaminant or Situation	Source(s)	Pathway	Receptor(s)	Consequences	Effect	Probability	Assessment Outcome	Remedial Action/ Recommendations/ Comments
Waste, litter and mud on local roads	<p>Litter escaping the site boundary (windblown).</p> <p>Vehicles delivering / removing waste including unsheeted or poorly sheeted vehicles</p> <p>Poor or faulty storage containment.</p> <p>Poor housekeeping Staff negligence leading to litter escaping off site.</p>	Air transport (windblown)	<p>Local human population, including users of surrounding commercial / industrial sites, other neighbouring businesses, residential dwellings, surface water features, flora and fauna.</p> <p>See Table 2.1</p>	F, E	Mi to Mo	4	Negligible	<p>The greatest risk of litter escaping the permit boundary would be during windy conditions. The only waste stored externally and exposed to windy conditions will comprise of oversize concrete, stone and fines from the trommel.</p> <p>The operator will implement the following to minimise the risk of litter escaping the permit boundary:</p> <ul style="list-style-type: none"> <li>Given the nature of the waste stored externally (processed concrete, stone, fines etc) it is not considered these waste types will contain any litter.</li> <li>Unprocessed, mixed or lighter fractions of waste are stored within the waste transfer building or open fronted structure off the main waste transfer building.</li> <li>Wastes will be stored in secure containers or bays.</li> <li>Container will not be overfilled to ensure no waste spills over the edges and can easily be windblown around or off the site.</li> <li>Waste stored in bays with have a 1m freeboard from the height of the bay to ensure waste cannot escape the top of the bay or become windblown.</li> <li>It is considered the open fronted structure provides a secondary containment to the bays / containers storing waste and will provide a barrier from external weather conditions such as wind.</li> <li>The operator checks the weather conditions for the coming week and receives notifications from the Met Office for any weather warnings. In extremely windy conditions of 7+ on the Beaufort scale, the site manager may make the decision to reduce storage heights to have a 2m freeboard or temporarily cover external waste storage areas with tarpaulin to prevent waste from becoming windblown. Due to treatment operations being undertaken within an enclosed building it is not considered the operator would be required to cease operations at any point due to risk of litter being windblown off site.</li> <li>Site inspections including litter checks will take place daily to identify and remove any litter from the site boundary.</li> <li>Stockpiles or storage areas of potentially friable waste i.e. concrete, hardcore and stone are dampened down to prevent material becoming dry and blowing off site.</li> <li>Good housekeeping measures are actively maintained on site to reduce the risk of litter.</li> <li>Vehicles entering and leaving the site will be sheeted at all times unless unloading or loading waste.</li> <li>Storage of waste that has the potential to be tracked as mud onto the public highway (soils, fines etc) have been positioned in bays away from vehicle routes on site. If mud is evident on wheels of vehicles leaving the site, this will be cleaned with hoses.</li> </ul>

Hazard / Potential Contaminant or Situation	Source(s)	Pathway	Receptor(s)	Consequences	Effect	Probability	Assessment Outcome	Remedial Action/ Recommendations/ Comments
Noise/ vibration	Fixed and mobile plant and machinery breakdowns or malfunctions  Tipping / loading of waste.  Operating mechanical treatment plant i.e. screener (trommel), baler	Noise through the air or vibration through the ground	Local human population, including users of surrounding commercial / industrial sites, other neighbouring businesses, residential dwellings.  See Table 2.1	A, D	Mo	3	Negligible	<p>The only mechanical treatment operations proposed to be undertaken on site include a trommel for the screening of mixed waste, a picking line which includes conveyor belts, an overband magnet and blower along with two balers for baling plastic, paper and cardboard waste.</p> <p>The operator will implement the following on site:</p> <ul style="list-style-type: none"> <li>• All mechanical treatment operations are undertaken within the confines of an enclosed building.</li> <li>• A series of good practice noise mitigation measures are included within the EMS, which are considered adequate control of any potential noise impacts during the operation. Management will ensure that all loading and treatment plant is functioning suitably i.e. moving parts to be regularly lubricated.</li> <li>• A preventative maintenance schedule for plant/machinery is detailed within the EMS. Operatives will be informed to turn off engines when the plant is not in use, and no revving of engines will be permitted at the site.</li> <li>• Operations will only be undertaken within the confines of the operating hours stated in the EMS – no operations will be undertaken within unsociable hours for the site surrounding and setting.</li> <li>• A 5mph speed limit is enforced on site.</li> <li>• All plant and equipment are maintained in accordance with manufacturer recommendations to keep plant and equipment functioning correctly.</li> <li>• Pre-use checks are undertaken prior to using plant or equipment. Any defects are reported and actions taken to rectify the problem.</li> <li>• Drop heights of material will be minimised as far as practicable.</li> <li>• The site will be operated in accordance with a Noise Management Plan, included in document ref. NP-012897.</li> </ul>
Vermin causing leptospirosis and other respiratory diseases	Poor housekeeping  Staff negligence leading to acceptance of unauthorised waste giving rise to pests  Storing trade waste bins for excessive time periods	Water, direct contact with waste	As above	A to C, E and F	Mi to Mo	4	Negligible	<p>There are no waste types proposed to be accepted as part of this EP application i.e. food waste, which have a high potential to attract vermin.</p> <p>The operator will implement the following on site:</p> <ul style="list-style-type: none"> <li>• All mixed waste will be stored and processed within a fully enclosed waste transfer building.</li> <li>• Strict waste acceptance procedures are implemented to ensure no food waste or waste that could attract vermin is accepted.</li> <li>• Mixed municipal waste (20 03 01) is stored within a fully enclosed waste transfer building. Once a load is tipped, if any waste that could give rise to pests such as food waste is discovered it will be segregated and removed from site as soon as practicable.</li> </ul>

Hazard / Potential Contaminant or Situation	Source(s)	Pathway	Receptor(s)	Consequences	Effect	Probability	Assessment Outcome	Remedial Action/ Recommendations/ Comments
								<ul style="list-style-type: none"> <li>Good housekeeping measures are actively maintained to reduce the potential of attracting pests. Housekeeping inspections take place daily at the end of each working day to collect any waste produced by on-site operatives</li> <li>In the event of pests presenting a problem on site an approved pest controller will be called.</li> </ul>
Fire, smoke, particulates	<p>Arson and or vandalism</p> <p>Faulty plant or equipment (plant failure)</p> <p>Combustible waste types, storage and processing</p> <p>Leaks and spillages of oil and fuel</p> <p>Discarded smoking material</p> <p>Hot exhausts</p> <p>Hot loads</p>	Air transport of smoke, direct contact of flames	<p>Local human population, including users of surrounding commercial / industrial sites, other neighbouring businesses, residential dwellings, surface water features, flora and fauna</p> <p>See Table 2.1</p>	A to F	Mi to S	3	Low	<p>Combustible waste is proposed to be accepted as part of this EP application. The operator will implement the following on site:</p> <ul style="list-style-type: none"> <li>Strict waste acceptance procedures are implemented to reduce the likelihood of non-conforming waste being accepted.</li> <li>Combustible waste is stored in accordance with the EA's Fire Prevention Plan guidance. Storage times and quantities of waste on site are significantly less than those in the guidance.</li> <li>No burning of waste or hot works is undertaken on site.</li> <li>A no smoking policy is implemented on site – anyone wishing to smoke must do so in the designated smoking area, 6m from combustible waste.</li> <li>Plant and equipment are maintained in accordance with manufacturer recommendations.</li> <li>Checks will be performed at the end of each working day to ensure there is no buildup of dust or fluff on plant and equipment, minimising the risk of fire caused by dust settling on hot exhausts and engine parts.</li> <li>All staff are fully trained in recognition of early fire signs and to prevent negligence.</li> <li>Fire-fighting equipment is available on site including, mains water, a 10,000-litre rainwater harvesting tanks and fire extinguishers.</li> <li>Security measures to reduce the risk of arson include lockable gates and 24/7 CCTV covering all combustible waste storage areas.</li> <li>The requirements of a Fire Prevention Plan are implemented on site, see document ref. 3490-MUC-FPP for further information.</li> </ul>
Vehicle collision/ accidents including impacts and injury	<p>Poor visibility</p> <p>Spillages of oils/fluids causing vehicles to skid</p> <p>Lack of PPE worn by staff</p> <p>Staff negligence i.e. mobile plant operators</p>	Direct contact	Site users and visitors	A to C	Mi to S	3	Low	<p>The operator will implement the following:</p> <ul style="list-style-type: none"> <li>An accident logbook is kept in the site office.</li> <li>Appropriate signage (including speed limits) will be displayed throughout the site.</li> <li>All staff have radios or horns / alarms on equipment to alert them of their presence. All staff will receive appropriate training regarding vehicle movements and operating plant.</li> <li>Vehicle movements on site are restricted to 5mph.</li> <li>The operator encourages staff for a greater number of "accident-free days" to develop a safer working environment</li> </ul>

Hazard / Potential Contaminant or Situation	Source(s)	Pathway	Receptor(s)	Consequences	Effect	Probability	Assessment Outcome	Remedial Action/ Recommendations/ Comments
Leachate	<p>Poor housekeeping</p> <p>Staff negligence leading to acceptance of unauthorised waste giving rise to leachate</p> <p>Overflowing trade waste bins</p> <p>Water through the ground from dust suppression and rainwater</p>	Ground	Surface water courses and features, including areas of sensitive ground such as the Dudley Canal No.2	E, F	Mi to S	3	Low	<p>Waste operations are all undertaken on an impermeable surface with its own sealed drainage system to capture any water that has come into contact with waste.</p> <p>Any wastes which are liable to give rise to contamination will be removed from site or placed into a quarantine skip/area.</p> <p>Physical / mechanical waste treatment operations are undertaken within a building and there is no leachate production associated with these operations.</p> <p>Regular (minimum daily) checks of site surface and infrastructure are undertaken by a suitably trained operative.</p> <p>Drainage for the site is illustrated on Drawing No. 3490-MUC-03.</p> <p>Fuel and liquid storage (if applicable) on site is stored with 110% containment but any spillages identified will be dealt with in accordance with the spillage procedures.</p> <p>The FPP has a dedicated section on firewater containment measures.</p>
Hydrocarbons including release of gases/fumes/ vapours/ volatiles	<p>Spills from fuel tanks</p> <p>Drips when refuelling</p> <p>Fixed and mobile plant malfunction</p> <p>Mixing of waste/ chemicals</p> <p>Spillage of chemicals</p> <p>Overtaken vehicle plant/plant failure</p> <p>Reaction between stored wastes</p>	<p>Ground - direct contact, ingestion</p> <p>Inhalation (of volatiles)</p>	Local human population, including users of surrounding commercial / industrial sites, other neighbouring businesses, residential dwellings.	A, B, D, E, F	Mi to S	3	Low	<p>There are no waste types proposed to be accepted that produce hydrocarbons e.g. ELVs.</p> <p>The release of hydrocarbons is managed through preventative and containment measures.</p> <p>Plant and equipment are maintained under a preventative maintenance schedule (see EMS) to where possible avoid potential leaks of fuel, oil or lubricants.</p> <p>Spill kits containing absorbent pads, granules, booms and personal protective equipment (PPE) are strategically located throughout the site. Staff are suitably trained in a spill response procedure to ensure spills are handled correctly.</p> <p>All site surfaces will be inspected daily for the presence of spillages when the site is in operation.</p> <p>No fuel is stored on site.</p> <p>All wastes liable to give rise to contamination will be removed from the site within an agreed timescale with the EA.</p> <p>At present, no gas is stored at the site.</p>

Hazard / Potential Contaminant or Situation	Source(s)	Pathway	Receptor(s)	Consequences	Effect	Probability	Assessment Outcome	Remedial Action/ Recommendations/ Comments
All of the above	See above	See above	<p>Protected species, habitats and designated sites including the following:</p> <ul style="list-style-type: none"> <li>Leasowes Country Park (SSSI).</li> <li>Ancient Woodland</li> <li>Flora and Fauna</li> <li>Protected species</li> </ul>	A, B, D, E, F	MI - MO	3	Low - negligible	<p>Special consideration has been given to the adjacent SSSI for Leasowes Country Park (SSSI).</p> <p>The site comprises of an impermeable surface which has been engineered to ensure surface water from the waste operational area drains to and is captures in an underground storage tank. Only non-hazardous inert material will be stored in the yard without the protection of a building or structure. The volume of water in the tanks is checked on a weekly basis (increasing to daily in periods of heavy rainfall) to ensure the tank does not reach maximum capacity causing spillage, site operatives will also check the tanks are functioning correctly.</p> <p>The site is fully secured with areas of kerbing, concrete panels and building structures to ensure no surface water escapes beyond the boundary or is discharged to surface water. The Fire Prevention Plan implemented on site details the containment measures and any other procedure implemented to protect the surrounding receptors from firewater produced as part of the extinguish process.</p> <p>The site is situated on the outskirts of a heavily industrial area and it is not considered the risk from operations undertaken on site is any greater than that operations already undertaken on the wider industrial estate.</p> <p>The operator does not propose to undergo any mechanical treatment externally, the only operations to be undertaken externally without the shelter of a building/open fronted structure would be the storage of processed inert material.</p> <p>It is considered nature of the waste types (non-hazardous) and the proposed treatment operations will not generate significant, emissions or pollutants that could harm or disturb local wildlife or degrade nearby habitats.</p> <p>In addition to the above, the operator does not propose to accept any food waste at the site that has the potential to attract predators or pests that could impact the surrounding wildlife or habitats.</p> <p>To ensure no non-compliant wastes such as malodorous wastes or any EWC codes not authorised under the permit etc are deposited on site, the operator implements strict waste acceptance procedures.</p> <p>Separated recyclables are stored in sealed skips which outside of operational hours can have covers or tarpaulins placed over the top to stop predator's accessing the waste. The skips are sealed at the bottom and have no drainage holes meaning if any water were to enter the skip it would be contained.</p>

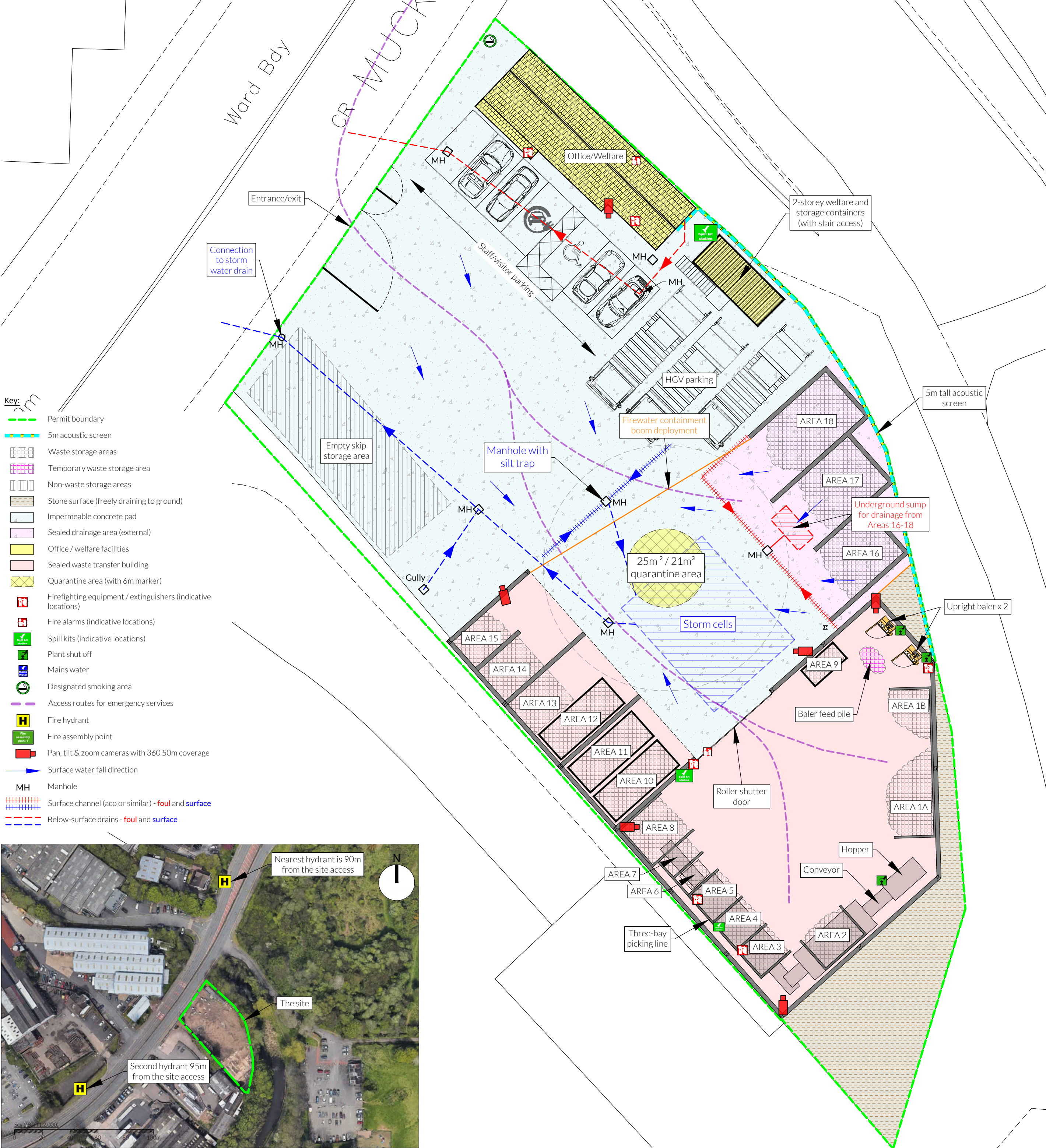
Hazard / Potential Contaminant or Situation	Source(s)	Pathway	Receptor(s)	Consequences	Effect	Probability	Assessment Outcome	Remedial Action/ Recommendations/ Comments
								Based on the information provided above, it is considered that due to the controlled, small-scale nature of the operations there is a low risk of impacting the surrounding habitats and species via discharge or pollutant and a low risk of attracting potential predators based on the waste types and storage limits proposed.


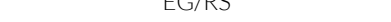
# Appendix II

## Drawings



Storage Area Details											
Plan Ref	Description	Storage type	Containment	Height / width of firewall (m)	Max width of pile (m)	Max length of pile (m)	Max height of pile (m)	Approx. area (m2)	Conversion factor used	Approx. volume (m3)	Max storage time
AREA 1A	Mixed waste reception (tipping), inspection and sorting area	Free-standing (unprocessed)	Two-sided concrete bay within an enclosed waste transfer building	4 / 0.1	6.2	2.8	3	17	0.75	39	<72 hours
AREA 1B	Mixed C&D waste	Free-standing (unprocessed)	Two-sided concrete bay within an enclosed waste transfer building	4 / 0.1	3.3	2.8	3	9	0.75	21	<72 hours
AREA 2	<10mm screened fines (trommel fines)	Free-standing (processed)	Three-sided concrete bay	4 / 0.1	3.6	2.6	3	9	1	28	<1 week
AREAS 3-5	Sorted waste bays beneath picking line containing wood, plastic, cardboard, residual waste, green waste etc (contents in each bay may vary)	Free-standing (processed)	Three-sided concrete bay	4 / 0.1	2.3	2.7	3	6	1	19	<72 hours
AREA 6	Ferrous metals	Sorted by overband magnet	Open topped moveable 4 cubic yard skip container	4 / 0.1	1.3	1.8	0.9	2	1	2	<72 hours
AREA 7	Lights (mixed waste)	Sorted by blower	Free-standing in cage	4 / 0.1	1.4	2.6	3	4	1	11	<72 hours
AREA 8	Oversize stone, concrete and hardcore from recycling plant	Free-standing (processed)	Three-sided concrete bay	4 / 0.1	2.5	2.8	3	7	0.75	16	<4 weeks
AREA 9	Plasterboard	Free-standing (processed)	Open topped moveable 8 cubic yard skip container	n/a	1.5	3	1.2	5	1	5	<4 weeks
AREAS 10 - 12	Sorted waste containers containing plastic, residual waste, metal etc (the contents in each container may vary)	Free-standing (processed)	Open topped moveable 40 cubic yard roll on roll off skip	4 / 0.1	2.4	6.1	2.5	15	1	37	<4 weeks
AREA 13	Baled paper & cardboard	Free-standing (processed)	Two-sided concrete bay	4 / 0.1	3	3.7	3	11	1	33	<4 weeks
AREA 14	Baled plastic	Free-standing (processed)	Three-sided concrete bay	4 / 0.1	3	3.7	3	11	1	33	<4 weeks
AREA 15	Wood / green waste	Free-standing (processed)	Three-sided concrete bay	4 / 0.1	2.3	3.0	3	7	0.75	16	<4 weeks
AREA 16	<10mm screened fines (trommel fines)	Free-standing (processed)	Three-sided concrete bay	4 / 0.1	4.2	4.6	3	19	1	58	<4 weeks
AREA 17	Soils / inert material	Free-standing (processed)	Three-sided concrete bay	4 / 0.1	4.2	7.3	3	31	1	92	<6 months
AREA 18	Hardcore, concrete and stone	Free-standing (processed)	Three-sided concrete bay	4 / 0.1	4.2	7.3	3	31	1	92	<6 months

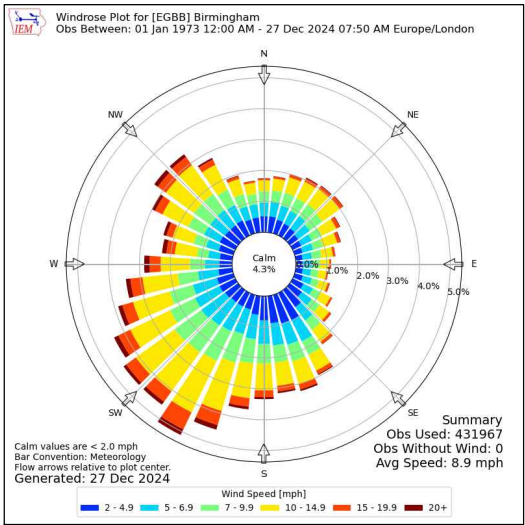


TITLE: SITE LAYOUT & FIRE PLAN		PROJECT/SITE: Mucklow Hill, Halesowen, B62 8DL		NOTES  Drawing for indication only. Reproduced with the permission of the controller of H.M.S.O. © Crown Copyright and database rights 2025, OS AS0000813445. This drawing is copyright and property of Oaktree Environmental Ltd.	REVISION HISTORY				
CLIENT: Halesowen Skip Hire Ltd		SCALE @ A2: 1:200	CLIENT NO: 3490		JOB NO: 001	Rev:	Date:	Init:	Description:
		DRAWING NO: 3490-MUC-03	REV: A		STATUS: Issued	-	16.07.25	EG	Initial drawing
		DATE: 17.09.25	DRAWN: EG/RS		CHECKED: RS	A	17.09.25	RS	Minor amendments
									

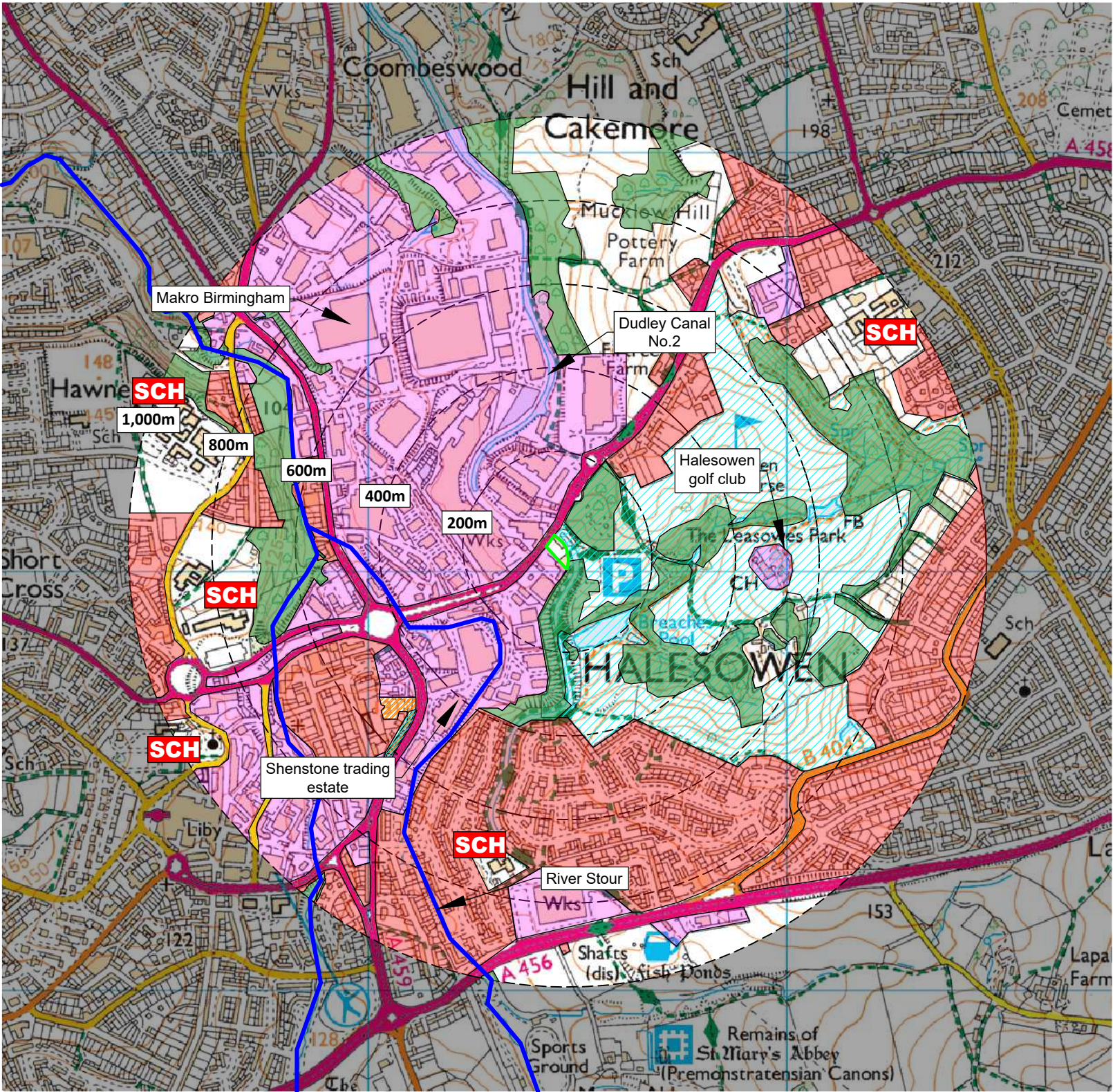


KEY:

- Permit boundary
- Main river
- Surface water body (river / stream / pond / pool / lake)
- Areas with mix of residential, retail and commercial properties
- Workplaces (includes agriculture industry, commerce and retail)
- Residential blocks
- Class A, B, C roads
- Nearest fire hydrant
- Railway line
- Schools
- Woodland areas
- Local Nature Reserves
- Sites Of Special Scientific Interest
- Priority Habitat Inventory - Deciduous Woodland



Compass Wind Rose for (EGBB) Birmingham  
1973-2024  
- source: Iowa State University

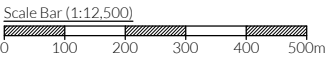
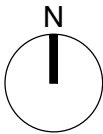


NOTES

- Boundaries are shown indicatively.
  - Wind rose data shows the prevailing wind direction to be Southerly.
- Drawing for indication only. Reproduced with the permission of the controller of H.M.S.O. Crown copyright licence No. 100022432. This drawing is copyright and property of Oaktree Environmental Ltd.

REVISION HISTORY

Rev:	Date:	Init:	Description:
-	24.01.25	JH	Initial drawing



TITLE: RECEPTOR PLAN		
CLIENT: Halesowen Skip Hire Ltd		
PROJECT/SITE: Mucklow Hill, Halesowen B62 8DL		
SCALE @ A3: 1:12,500	CLIENT NO: 3490	JOB NO: 001
DRAWING NO: 3490-MUC-04	REV: -	STATUS: Issued
DATE: 24.01.25	DRAWN: JH	CHECKED: RS

